



YOU CAN BUILD THAT New House This Spring If You Start Planing Now!

WE SAVE YOU MONEY ON BUILDING SUPPLIES!

Before You Insulate Your Home
**READ THIS IMPORTANT
DOUBLE VALUE GUARANTEE**

**Guarantee of Satisfaction
BALSAM-WOOL
Sealed INSULATION**

To the Homeowner:
Install Balsam-Wool (any thickness) in your attic so that the entire ceiling or roof area is insulated. Follow application instructions in bundle. Use it one year (12 months). If you are not entirely satisfied with the advantages of Balsam-Wool—if it has not helped you save fuel and given your home greater year-around comfort, you may return it to the dealer from whom it was purchased. He will refund your money—PLUS the original cost of application.

WOOD CONVERSION COMPANY
NEW YORK, N. Y.
PRODUCT OF WESTPHALIA

ONLY BALSAM-WOOL OFFERS SUCH A MONEY-BACK GUARANTEE

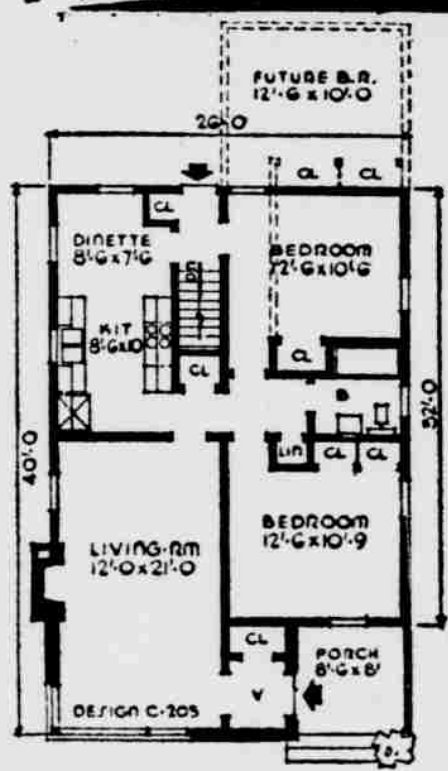
WITH BALSAM-WOOL YOU ARE SURE OF LIFE-TIME COMFORT & SAVINGS

**GET THE DOUBLE ADVANTAGES OF
BALSAM-WOOL SEALED INSULATION**

You'll be surprised how little it costs to insulate your attic with Balsam-Wool. Do it now—and "get set" for lifetime comfort and low fuel bills. Remember, Balsam-Wool attic insulation is sold under a money-back guarantee of complete satisfaction.

16" and 23" Wide, Standard Thick, Per 100 Sq. Ft. **\$4.95**

16" and 23" Wide, Double Thick, Per 100 Sq. Ft. **\$7.11**



THE CAPE has a two bedroom plan that can be easily expanded into a three bedroom plan by adding a rear bedroom as indicated. There is a full basement, with stairs leading from the rear entry, a combination kitchen-dinette, a large living room with fireplace and corner picture window, two bedrooms, bath and covered entrance.

Storage is amply provided for in wardrobes in bedrooms, linen and general closet in hall and coat closets at the entrance. Refrigerator and sink are built into the exterior wall cabinets and the range on opposite wall.

Exterior walls are finished with wide siding except that brick facing is used on the living room wall from the fireplace to entrance.

Dimensions are 26 feet by 40 feet. Area is 972 square feet with a cubage of 18,954.

Make Your Plans
**TODAY For Building
That NEW HOME!**

To insure that your house will meet all tests of the weather —
Build with Quality Materials.

BUILD FOR THE FUTURE!

SEE US TODAY FOR
YOUR ESTIMATE



| | |
|------------------------|----------------|
| FIREBALL | \$14.75 |
| CHALLENGER | |
| BRIQUETS | \$19.00 |
| COLORADO LUMP | \$17.50 |
| BLACK DIAMOND | \$15.50 |
| COLORADO NUT | \$15.50 |
| HANNA LUMP | \$15.50 |
| GREEN MARK | \$14.50 |
| NUT COKE | \$24.50 |
| SEMI ANTHRACITE | \$22.00 |
| LUMP COKE | \$23.50 |
| STOKER COAL | \$15.50 |

K&M
best in asbestos

"Century" ASBESTOS-CEMENT SIDING

Saves and beautifies for a Lifetime

12"x36" Wavy Butt, Shell, White, Per 100 Sq. Ft. **\$11.25**

Modern - Beautiful - Durable

**CHIEF One Coat
FLAT WALL FINISH**

SELF-SEALING
Easy To Apply!

NO BRUSH MARKS

You'll like the way this finish slips off the brush and onto the surface in a smooth, even film with no streaks, ridges, or brush marks. Even persons with little or no painting experience obtain fine results with it. Dries overnight!

A Genuine OIL Paint!
One coat covers most painted surfaces! Smooth, beautiful and velvet like!
Wears Long!

\$4.10 Gal.

DIRT QUICKLY REMOVED

It's OIL base makes this finish thoroughly washable. Dirt comes off quickly with the wipe of a damp soapy cloth, leaving your walls spotlessly clean and lovely again, without any noticeable affect on the paints velvet sheen or rich color.

STEEL CLOTHESLINE POLES

2"x8' Poles, 4 Line
3' Crossarm with Rope Loc Fasteners, each **\$5.75**

Solid Steel "J" Beam, 9", 4 Line, 4' Crossarm with 4 Lines, each **\$9.75**

Oak Flooring

COMPARE THESE PRICES ANYWHERE!

No. 2 Common Plain 25 32x2 1/4 Red Oak Flooring, per 100 bd. ft. **\$11.70**

No. 1 Common Plain 25 32x2 1/4 Red Oak Flooring, per 100 bd. ft. **\$19.50**

Rock Island
Weather-Stripped
Window Units

24x16
2 Lights **\$19.95**

Chief Roller Brush and APPLICATOR

This handy lambswool painter applies both oil and water paints easily, quickly and smoothly.

It leaves **NO BRUSH MARKS**, does not drip, and there is not laps to contend with.

USE IT TO—apply flat or semi-gloss paint, enamels, varnish, aluminum paint, primer and undercoating.

USE IT ON—smooth or rough surface, plaster, stucco, wallpaper, brick, stone, cement, wood, or metal.

APPLICATOR AND METAL TRAY \$2.59

Air Driers

ABSORBS MOISTURE FROM DAMP BASEMENTS, ETC.

Come in large steel pail that holds the water collected. The pail contains the neatly packed bag and the bag is placed on cross bars in the pail.

Wt. 25-Lbs. **\$5.25**

PLATTSMOUTH LUMBER CO.

QUALITY MATERIALS AT LOW COST
L. B. DALTON and W. B. HOAGLAND

648 1st Avenue

Phone 285