



Blessed be this great day and the year to come. May the Lord watch over your loved ones.



LUGSCH CLEANERS

AND EMPLOYEES

429 Main Phone 290



On this joyous day, we pause to meditate and pray in thanksgiving for His coming. Peace to the world.



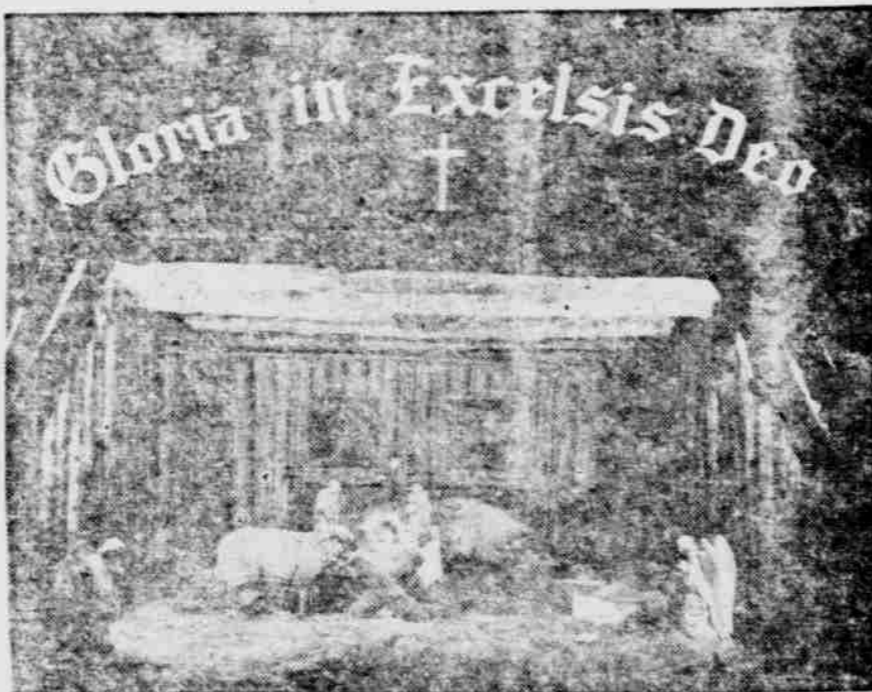
\$1 FOR 98 PENNIES
NORRISTOWN, Pa. — To help the Treasury Department cope with a copper shortage by turning penny collections back into circulation, the Peoples National Bank recently handed out a silver dollar for each 98 pennies. One man turned in 4,925 pennies, claiming he didn't realize he had so many until the bank made its offer.

89-YEAR-OLD PATIENT
ASHEVILLE, N. C. — Although Mrs. Jane Clark is 89, she successfully underwent a serious surgical operation and is recuperating at a local hospital. Doctors say it is most unusual for a patient of her age to undergo surgery so successfully. Mrs. Clark lives on a small farm near Barnardsville, N. C.

CAVE GUIDE AT 8
SAN MARCOS, Tex. — Although Herbert Holland Rowland is only eight years old, he is a guide in the Wonder Cave, which goes 150 feet underground. His father, H. H. Rowland, maintains the cave.

Youths racing cars in reverse add to highway dangers.

WM. S. WETENKAMP
Real Estate and Insurance
Office South Sixth St.
Res. Phone 5176



THE STABLE AT BETHLEHEM . . . The Babe in the manger, surrounded by the gentle animals, is a vision we can see more clearly with our hearts than with our eyes. And seeing it, we may truly say, "Glory to God in the highest."

Mistletoe Outlived Sinister Meaning

Mistletoe, once used as a weapon of death, is now almost a universal symbol of love and peace.

According to Norse mythology, there was a god named Balder, who personified the sun, Loki, another god, plotted to destroy Balder.

Balder's mother, when she first learned of Loki's intentions to kill her son, obtained a promise from all living things that they would not harm Balder. All agreed, but the mistletoe, so it was with a mistletoe arrow that Loki induced Balder's blind brother, Hoder, to kill the sun god.

Higher powers intervened, however, and Balder was restored to life. The mistletoe was placed under Frigg's care, and the mother of Balda saw that it was never again used to do harm.

The custom of giving a kiss of love or peace beneath the mistletoe is an assurance that it will never again be used as an instrument of evil.

MAN WRESTLES DEER
BIRMINGHAM, Ala. — E. E. Gillian, 51-year-old zoo caretaker, entered the deer pen at feeding time. He had to wrestle with an eight-point deer, which charged him, for fifteen minutes before police killed the animal. The 195-pound buck gored Gillian in the thigh and hand before Gillian could catch the deer's antlers. He finally bulldozed the animal's nose to the ground, meantime yelling for help. A passerby summoned police.

In Old England coal was believed to fill the air with poisonous gases, says the World Book Encyclopedia. In 1306, the English monarch issued a proclamation declaring anyone who burned coal would be put to death.

THE PLATTSMOUTH, NEBRASKA, SEMI-WEEKLY JOURNAL
Monday, December 24, 1951 Section B PAGE THREE

Nebraska has approximately 26 per cent of its population living in its two largest cities; 16 per cent in cities ranging from 4,500 to 25,000 in size; 25 per cent in towns and villages; and 33 per cent on farms.

Massive preparation and planing plants costing millions of dollars prepare coal for market.

Life insurance claims due in 1951 are put at \$1,400,000,000.

Journal Want Ads Pay!

J. Howard Davis
LAWYER
Soennichsen Building
Phone 264
Plattsmouth

When You Think of

SHOES

Think of

Woster's

X-RAY FITTING

GREETINGS

To you whose confidence we treasure, we sincerely wish a Christmas of great joy



SWATEK HDWE.

433 Main Phone 5119

Balsam Recommended As Best Yule Tree

In choosing a Christmas tree, many look for trees that will not shed needles quickly indoors. Highly recommended are balsam and Douglas firs, which usually will hold their needles as long as two or three weeks in a warm house.

Balsam is fragrant beyond all other Christmas trees, has long



lower branches and thick spire-like top. Its needles do not stab the hand. Like the needles of all firs, they are usually flattened, not squarish.

For longer life, place the tree outdoors in a bucket of water for 24 hours before putting it up, or place in a waterproof container of wet sand and keep the sand moist.



I HOPE, I HOPE . . . There is an expression commonly used during the days just before Christmas—and this is it, on the face of the lad with the football. If things work out the way they usually do, he'll get his wish.

Pine Trees Live Long Life In Nebraska Area

Extension Forester Earl G. Maxwell of the University of Nebraska says he is further convinced that pines will live a long time in Nebraska after examining some old plantings on a recent trip through the state.

Oldest, he reported, was an 1878 planting of Scotch and Austrian pine on the Dutter Brothers farm in Colfax county. The farm is now operated by Joe Vondruska. Several of the trees were estimated at 23 to 24 inches in diameter. The largest was 33 inches.

Mr. Maxwell and Dr. R. J. Pool, former head of the University's botany department, looked at a big planting on the Jason Arter farm in western Holt county, near Newport. They reported the 1885 planting in fine condition with many of the trees large enough for saw timber.

They also visited the Bruner ranch in southwestern Holt county, where they saw an 1892 planting which was inspired by the late Charles E. Bessey and Lawrence Bruner of the University of Nebraska. The success of the planting, Mr. Maxwell reported, had much to do with the establishment of the Nebraska National Forest in Thomas and Cherry counties.

At the E. G. Billstein ranch near the same area the two NU men saw a planting covering 150 acres. Mrs. Billstein said 132,000 trees were planted in 1921-23. When asked why Mr. Billstein planted so many trees, Mrs. Billstein said: "If you could see how bare and windswept the land was in 1920 when we came here you could understand better why we wanted lots of trees."

NEW YORK — The United States Maritime Commission sold 133 merchant ships during the first three months of the year, bringing to 1,510 the number sold since June, 1950.

LENNOX

FURNACES Installed By
Martinson Sheet Metal
620 1st Ave. Phone 257

Origin of Gift-Giving Told in Many Versions

There are many interesting versions as to how the custom of gift giving at Christmas time started.

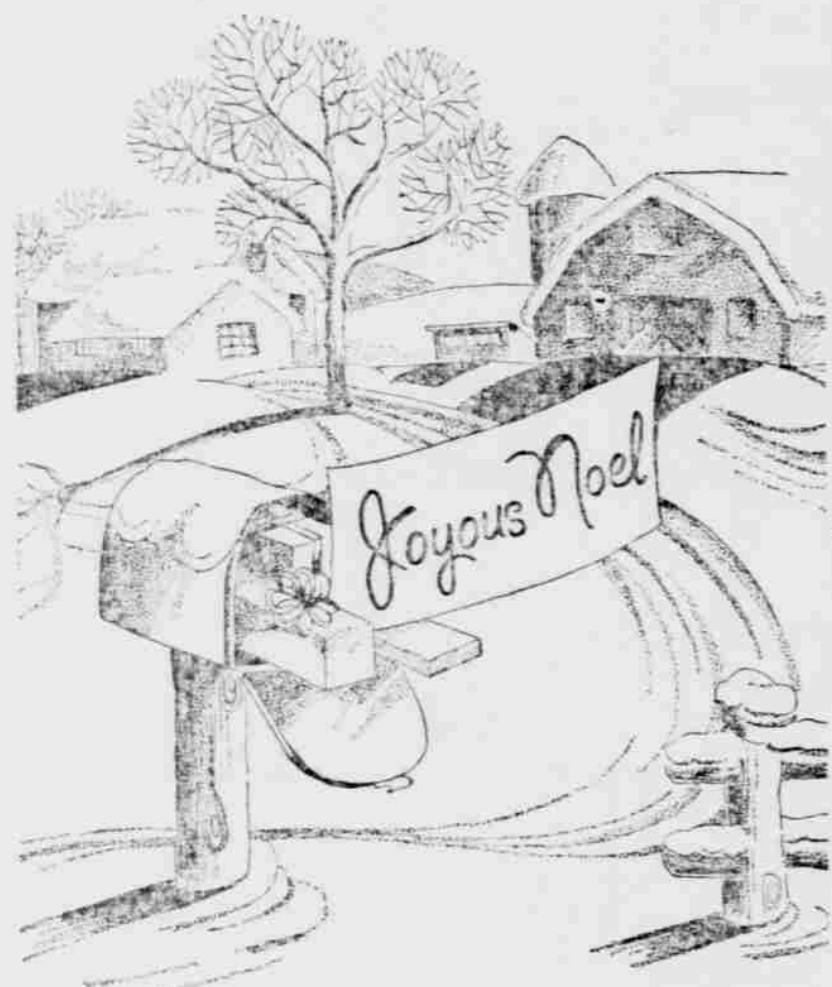
Some believe that it all came from ancient England, where it was once custom to hang kissing rings in the great halls. These rings were decorated with mistletoe and were the key for a pleasant holiday pastime. It is said that the young knights and ladies would come to the kissing rings with Christmas roses for their secret sweetheart.

This started it all. Now gift giving is traditional.

Business is told West has "edge" over Soviet in war output.

Walter H. Harold R.
Smith & Lebens
Attorneys-at-Law
Donat Bldg. Plattsmouth

GREETINGS



May there come to you at this

Holiday-Time

an abundance of the precious things of life;

Health, Happiness

and enduring Friendships.

DONAT'S TAVERN

402 Main Street Phone 5251



We're adding another to all you'll get. For the happiest Christmas and New Years yet!

your friends at

The GAS Company



CASS DRUG

Walgreen Agency

Maybe It's a Bit OLD FASHIONED

. . . this idea of wishing folks a Merry Christmas but we have been doing so for many years and each season we welcome the opportunity more and more.

Ours is a sincere greeting with the true significance of the Christmas Season the real thought back of our message to you.

MERRY CHRISTMAS
HOTEL PLATTSMOUTH
HOTEL BAR

