

Two New CARE Packages Are Available Now

NEW YORK — The needy of seven European countries and India will receive U. S. surplus food products contained in two new CARE packages, CARE Executive Director Paul Comly French announced today.

One of the units is a "family package" weighing 24 pounds net and may be ordered for \$5 by Americans wishing to send help to Austria, England, France, Germany, Greece, Italy, Norway and India. The donor may des-

ignate a type of beneficiary but not an individual by name, since the surplus foods are intended for hungry people abroad who do not have friends or relatives here.

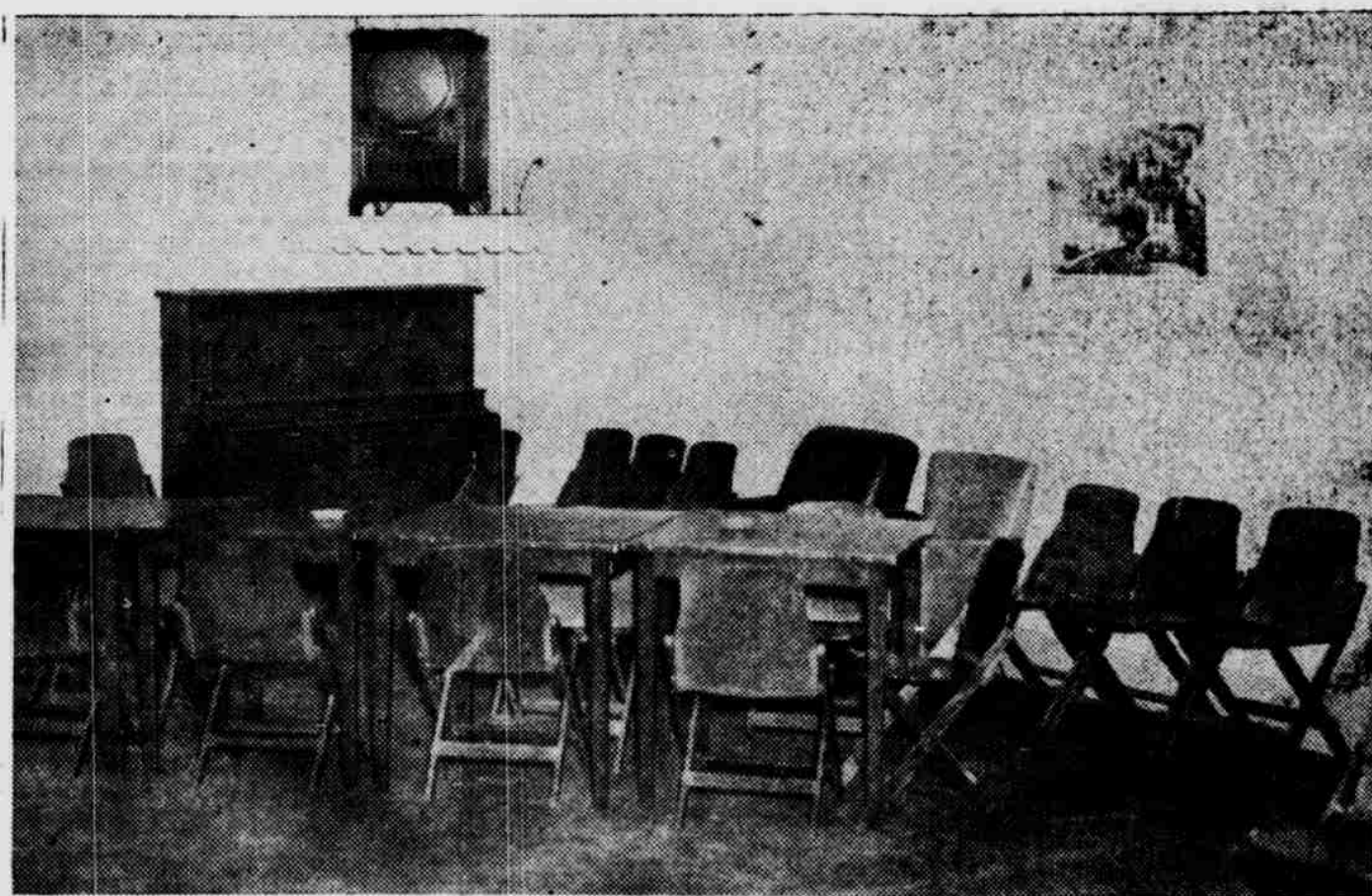
The second unit, an "institutional package" for delivery at \$125, in the same eight countries weighs nearly 1,000 pounds and will be distributed to hospitals, orphanages, refugee and expellee camps and similar centers of need.

"The price of these packages," French said, "represents, in part, the cost of conveying the various products from points at which they were stored to CARE's Philadelphia warehouse where they will be packed for shipment. Both also contain items which were not included in the goods obtained free from the U. S. Department of Agriculture and which CARE purchased to round out the health value of the package contents."

Orders may be sent to CARE, 20 Broad Street, New York 5, N. Y., or any CARE outlet in the U. S. Delivery is guaranteed and the packages are admitted to the various countries without customs or other charges to the recipient or loss of regular rations.

The "family package" contains 10 pounds of milk powder, 3 pounds of egg powder, 5 pounds of butter, 4 pounds of Cheddar cheese and two cans of beef in gravy. The last item was provided by CARE itself. The "family package" for India contains dried beans in place of the canned beef.

The "institutional package" contains 200 pounds of milk powder, 100 pounds of egg powder, 200 pounds of butter, 210 pounds of Cheddar cheese, 100 pounds of dried pea beans and 144 pounds of canned beef in gravy. The beans were purchased from the Department of Agriculture and the beef through regular wholesale channels on the basis of competitive bids.



Facilities at the lodge also provide excellent recreational and social arrangements for auxiliary members and children. Above is a scene of the ladies game room. They claim first choice to the television set.

PERFECT HOST to a host of friends



Budweiser
LAGER BEER
ANHEUSER-BUSCH, INC., ST. LOUIS

Distributed By
CAPITAL LIQUORS INC.
OMAHA

Congratulations

On Your **48TH** Anniversary

AERIE NO. 365 — F.O.E.

BATES BOOK STORE

Office Supplies — Stationery — Novelties

Eagle Auxiliary Unit Is Organized April 12, 1949

Memorial Seals Will Reach Eagles Soon

Memorial Seals to further the cause of the Memorial Foundation are slated to reach the mails in mid-April. Members of the Order will thus have an opportunity to contribute, in a seemingly small, but nevertheless effective manner, to a program which endears itself to Eagles everywhere more and more with each passing year. The 1,292 children of the Foundation are growing up, and the demands upon Foundation resources are consequently greater. The Foundation movement requires whole-hearted Memorial Seals support to assure the maximum fulfillment of the Fraternity's pledge to the widows and children of Eagles who made the supreme sacrifice. The Foundation Fund, built up by the contributions of Aeries, Auxiliaries, and individual Eagles, has been conservatively invested, and remains, under Foundation by-laws, a perpetual trust fund, for later use for other Eagle philanthropies. In addition to the increased physical welfare service costs for the Foundation youngsters, greater numbers are entering colleges under Foundation auspices, and additional income will be necessary. The Memorial Seals provide essential support for the popular Eagle humanitarian program.

Earns His Medals

GREENEVILLE, Tenn.—Jodie F. Shelton, 50, of Horse Creek, Tenn. estimates he has walked a total of 1,976 miles to and from Sunday school at Horse Creek Church during the past 19 years. Each year, he gets a medal for attendance.

The first U. S. post office was opened in New York City in 1783.

Method of capital punishment in Utah is hanging or shooting.

Hawaii raises about nine-tenths of the world's commercial pineapple.

Add your name to the list of Eagle members in Plattsmouth.

Eagle Candidates



Robert Sedlak



Bruce Gold

April 12, 1949, just one week before the 46th anniversary of the founding of the Fraternal Order of Eagles at Plattsmouth, an Auxiliary chapter was founded.

Eighty-four Plattsmouth women were listed on the Auxiliary charter, which opened a new branch of activities for Aerie 365.

Now in effect more than two years, the Auxiliary unit of Eagles has grown in Plattsmouth. Its membership has grown, as has the scope of the unit's functions.

Only recently, the Eagles Auxiliary sponsored a special supper at the Eagle Hall to assist the lodge in covering part of the cost of remodeling.

The Auxiliary charter, like that of the Eagles charter, hangs in the main lodge hall, on the second floor of the Eagles building.

Listed on the Auxiliary charter are:
Ella J. Thun, Dorothy Jancek, Anna Schubeck, Esther Donat, Alice Gradoville, Betty Gerbeling, Irene Smith, Martha Williams, Hazel A. Fitch, Hilda O'Donnell, Ruby R. Gochenour, Anna Pearl Beins, Rose Abel and Florence Arnold.

Pearcy Bailey, Matilda Bomberg, Dorothy Bowman, Betty L. Campbell, Frances Carneal, Rachel Craig, Honey Lou Cole, Marguerite Covert, Marjorie Dallrow, Mary Wagner, Clara E. Druceker, Nadine Eledge, Bessie J. Faris, Mary Gobelman, Charlotte Gall, Murna Gochenour, Viva Gregg, Edna Gunsolley, Edith Haley, and Elizabeth Hall.

Lena Hoshar, Jessie Klingler, Bette Ladd, Hazel LaHoda, Sus Mayer, Rachel Meints, Helena Meisinger, Dena Mendenhall, Mabel Mendenhall, Arlene Mogensen, Delta Newton, Marie O'Donnell, Shirley Jean O'Donnell, Emma Parriott, Freda E. Read and Helen Rosborough.

Joyce Schalk, Dorothy M. Sharp, Anna Frances Schubeck, Eleanor Spangler, Josephine Strough, Edna Taylor, Irene Taylor, Agnes L. Volkart, Sophia Wolever, Mary Porter, Louise Swayne, Francis Jenkins, Delores F. Frazier, Agnes Wilson, Alice Renner, Glenda Ladd, Pearl Meisinger, Katherine Sandin and Clara Jordan.

Eagles welcome you into their lodge.

C
O
N
G
R
A
T
U
L
A
T
I
O
N
S
To
The
Eagles
On
Their
48
Years
PAPILLION
DISTRIBUTING CO.
— STORZ BEER —
GEO. BEERLINE

Congratulations

Aerie No. 365

on your

48TH

Anniversary

in

Plattsmouth

DONAT'S TAVERN

Where Friends Eat and Drink

Congratulations

TO THE

F. O. E.

ON YOUR

Birthday

48th

Birthday

There's
a Ford
in
Your Future



There's
a Ford
in
Your Future

FOR THE BEST IN

USED CARS

Come To The

Plattsmouth Motors

SALES & SERVICE

Congratulations

ON THE

48th ANNIVERSARY
of AERIE NO. 365
F. O. E.



For **CLOTHING** For

MEN — WOMEN — CHILDREN

DRY GOODS and the BEST in GROCERIES it's

Soennichsen's

The Only One Stop Shopping Center In Plattsmouth