

There are three types of tea: black, green and oolong. The difference is controlled in processing. Black tea is fermented, green is unfermented and oolong is semi-fermented.

**IT'S CHRISTMAS**  
*SO* LET'S BE MERRY

Please accept our best wishes  
for the Holiday Season  
Thanks A Lot For Your Patronage

**Myers Grocery**

333 Main St.

Phone 6131



*The Warm  
Glow of  
Christmas  
Candles*

It is our fondest wish that you will enjoy the same warm friendships and associations of those about you on this, the greatest day of them all - Christmas.

**Farley Furniture Store**

118 South 6th

Phone 260

**"EASY DOES IT"**

**T**ABLE LINENS for the holidays will look nicer if you follow tested tips for keeping them in the peak of condition.

If hanging them on a line to dry, fold them over the line and keep the corners straight. Do the same with napkins. If you pull corners into peaks, they'll be difficult to iron square.

Warm water spreads faster than cold, and also more evenly, so sprinkle with warm water before

**RECIPE OF THE WEEK**  
**Chocolate Fruit Drops**  
(Makes 3 Dozen)

1 cup sifted enriched flour  
1/2 teaspoon salt  
1/2 teaspoon baking powder  
1 cup chopped raisins  
1/4 cup cut, candied cherries  
1/4 cup chopped, candied pineapple  
2 eggs  
1/2 cup sugar  
2 squares unsweetened chocolate, melted  
1/4 cup melted shortening  
Sift together flour, salt and baking powder. Add raisins, cherries and pineapple. Beat eggs until light and add sugar gradually. Add chocolate and melted shortening. Mix well. Add flour mixture. Drop by spoonfuls on greased baking sheet. Bake in a moderate (350° F.) oven for 10 to 12 minutes.

ironing. Place in a plastic bag or roll in a turkish towel for an hour or two before ironing.

Embroidered, appliqued or monogrammed pieces should be placed right side down on a thick bath towel and then ironed on the wrong side. This makes the decorative work stand out better.

Pure linens should be quite damp for ironing. Press on wrong side first, then go lightly over the right side. If you like a dull effect on your dark linens, iron until dry, on wrong side only.

Linens textured rays should be quite dry for ironing, in fact some types are best ironed when bone dry. Iron on the wrong side.

Fold all linens lightly, creasing as little as possible. If you have the space, roll on a cardboard instead of folding them at all.

More than 6,000 discharged prisoners in the United States were assisted and given employment by the Salvation Army in 1947, and approximately 3,000 were paroled to its care.

The snow is sprinkled evenly  
Upon the cold hard ground;  
Icicles hang from chimneys  
And the house-roofs all  
around.

A fine, white blanket of snow  
has come  
To purge the world from  
sin;

To clean the earth, and clean  
ourselves,  
And make us pure within.  
The snow will melt, and under  
it

We'll find a clean clear  
slate;  
We'll start anew the fight to  
free  
The world from fear and  
hate.

At Christmas for a short time  
All our cares will be at rest;  
We know we can do no more  
Than try to do our best;  
We hope that someday all the  
men

On earth will understand  
That peace on earth, goodwill  
toward men  
Means joy throughout the  
land.

— A Student  
(From the Platter)

**U.S. Place Names  
Express Christmas  
Idea Many Ways**

**S**ANTA CLAUS, INDIANA; Bethlehem, Conn.; and Christmas, Fla., are a few of the more familiar post offices which each year handle a flood of mail from senders wishing to obtain yuletide postmarks.

Although the federal post office department has now barred extra flourishes by local postmasters using Christmas symbols and mottoes, a town's own holiday name can still give that festive touch to a greeting or package of toys.

Indiana's Santa Claus is the only town so designated in the United States. The privilege is reserved to its post office by congressional act. There is, however, Santa, Idaho. There is also only one Christmas—the one in Florida—plus a Christmas Cove, Maine.

On the other hand, seven Bethlehems answer the seasonal roll call: they can be found in Connecticut, Georgia, Indiana, Kentucky, Maryland, New Hampshire, and Pennsylvania. The Bethlehem, Conn. post office was one of several stations that figured in headlines recently on the use of especially-designed cancellation stamps bearing the now-forbidden Christmas tree decoration. The town's population is about 350.

There are two Noels—in Virginia and Missouri. Last year, Missouri's Noel post office reported hand-cancellation of a record 650,000 pieces of Christmas mail—800 for each of the town's residents.

Besides specific Christmas names that dot the land there are dozens that call up Biblical or holiday associations. There is Advent, W. Va., for the Nativity. Kentucky has a Mary, and Oregon and Utah a Joseph each.

One Wiseman is found in Alaska and another in Arkansas. The third, it may be assumed, is in Wisemantown, Ky. There are five Stars and four Shepherds. West Virginia contributes Goodwill; Missouri, Peace Valley; and there is Joy in Illinois, Kentucky, Missouri, and Texas.

For the Christmas party, Turkey is available in four states; Cranberry in three. Kentucky has a Mistletoe. Six states count an Evergreen; seven a Pine, and three a Holly.

Louisiana comes up with Trees, Alabama with Candle; and to top the decorations, Pennsylvania has its Angels.



**DOLLIES ALL . . .** Barbara Johnson (left) and Patricia Abel, both orphans, are in a virtual paradise, seated amid so many playmates. The dolls, more than 800 of them, were dressed by volunteer workers for distribution to charitable organizations as a Christmas gift.

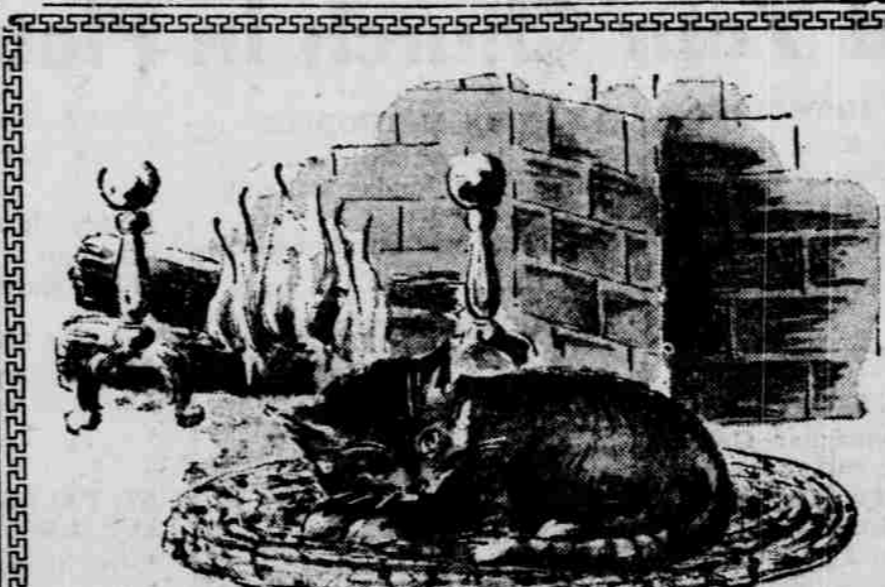


**P**LEASANT as it is to dream of a "White Christmas" with its carols and gifts, feasting and merry-making, the sparkling eyes of children delighting in Santa Claus and the wonderful Christmas trees, these things never can symbolize the tremendous significance of the day.

The birth of the Saviour was the greatest event in the history of the world. In spite of all the backslidings, Christian peoples have pressed forward steadily.

However vicious and corrupt, the world today is far better than the world of pagan times; familiarity with the cross and crucifixion has abolished legal tortures and much cruelty—and, if given a chance, might shame us into banishing the curse of international viciousness for the sake of Him who became the Saviour of Mankind.

One of the first locomotives in the United States, the Tom Thumb, once lost a race to a horse.



You will have a  
**MERRY CHRISTMAS**  
Won't you?

**Solomon's Coffee Shop**

Closed All Day Christmas



**When Father  
Carved the...**

**BOAR'S  
HEAD**

**WHAT ROAST TURKEY** is to Christmas dinner today, the boar's head was to the Yuletide feasting of Medieval England.

Preparation for the feasting began during September or October when the boar's flesh was at its best. Hunters tracked the animal down with well-trained packs of boar-hounds and it was dangerous sport, attacking the ferocious beast with spears or surrounding him and driving him into a net.

His ear was his most vulnerable spot, but before the dogs could get a grip on it and pin him down, his sharp teeth often wounded—sometimes even killed—the hunter and his dogs.

Nevertheless, the pluckier the boar, the louder his praises were sung, the merrier the feasting, when his head was borne to the Christmas table.

**Make the Covering Gay  
When Wrapping Up Gifts**

**H**ALF OF THE GIFT is the wrapping—let's make the covering as gay as the gift inside.

For the girl who likes to sew, material for a dress in a fabric-wrapped box, rick-rack for the ribbon and spools of thread with big buttons for the decoration create an unusual package. If you give yarn for a sweater, use one skein for the big bow.

Disguise a flat box of letter paper as a desk pad. Use a real blotter on top with corners of metallic paper.

Why not use a necktie knot in decorating the box containing a tie? Fasten the ends of the ribbon under the lid about 1/4 way down; bring to center; tie the knot and shape the ends tie fashion. Use a dark blue, wine or green ribbon about one and one-half inches wide. These are attractive used on a striped or plaid paper.

Or the package might resemble a tiny suitcase wrapped in paper with the ends bound in decorative tape. Add a handle and identification tag.

Subscribe to The Journal!

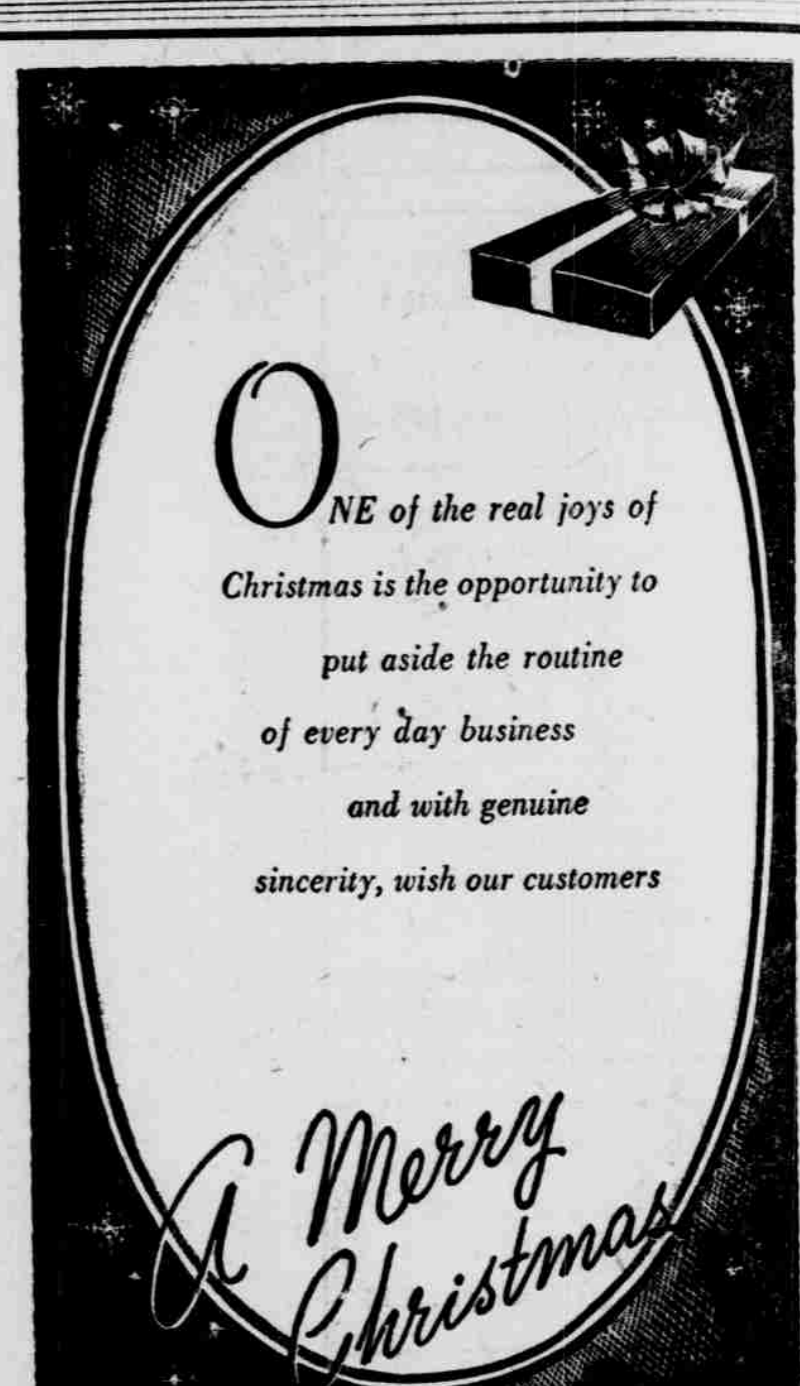


With Cordial  
**Good Wishes**  
For a  
**Merry Christmas**

**George Conis**

411 Main St.

Phone 4133

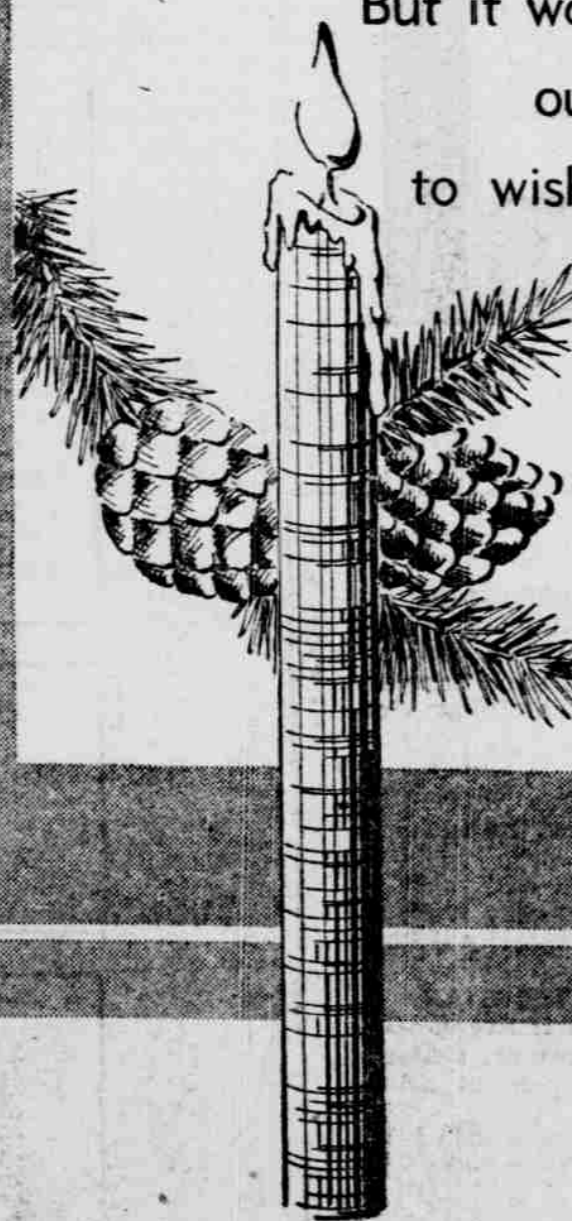


**O**NE of the real joys of Christmas is the opportunity to put aside the routine of every day business and with genuine sincerity, wish our customers

*A Merry  
Christmas*

**Barta Poultry Service**

**I**T'S an old and  
happy custom  
But it warms  
our heart  
to wish each of  
you a



*Merry  
Christmas*

**Donat's Tavern**

Beer — Wines — Liquor — Mixers

402 Main

Phone 5251



*Greetings  
of the Season*

We wish for you every happiness  
that you may enjoy fully  
The Season of good cheer.

**Stander Implement Co.**

141 South 3rd Street

Phone 4178