



SPRING GARDEN SHOW

"Come fill your shopping basket....so many varieties....so much good eating for all!"

Look What 10c Will Buy ---

| | |
|---|------------|
| Fairmont Pride Whole Kernel Golden CORN 12-Oz. Vac. Can | 10c |
| Le Grand Whole Kernel CORN White, No. 2 Can | 10c |
| Monarch No. 2 Can BEAN SPROUTS | 10c |
| Connor's 3 1/2-Oz. Cans Kippered Snacks | 10c |
| Hinky Dinky Golden Crust BREAD Sliced Loaf | 10c |
| 16-Oz. White Spuds Whole POTATOES Irish No. 2 Can | 10c |

ORANGE JUICE

Top Frost Quick-Frozen Concentrated

Grade "A" Florida Orange Juice. Each 6-Oz. Can Makes One and a Half Pints of REAL Orange Juice

2 6-Oz. Cans 49c

Del Monte Apricots

HALVES OR WHOLE (Peeled)
No. 2 1/2 Can
32c 2 for 63c
DOZEN CANS.....\$3.69

HALVES
No. 303 (17-oz.) Can
21c 2 for 41c
DOZEN CANS.....\$2.43

WHOLE (Unpeeled)
No. 303 (17-oz.) Cans
18c 2 for 35c
DOZEN CANS.....\$2.05

WHOLE (Unpeeled)
No. 2 1/2 Can
27c 2 for 53c
DOZEN CANS.....\$3.12

APRICOT NECTAR Del Monte 46-Oz. Can, 39c
Doz. Cans, \$4.55

Food Club Vertical Pack Fancy Blue Lake

GREEN BEANS No. 2 Can **29c**

Tracy in Heavy Syrup

PRUNE PLUMS . 2 No. 2 1/2 Cans **35c**

Walnuts Large Calif. Diamond, 1-lb. cello **45c**

Olives La Sevillana Queen Full Quart Bottle Full Pint, 35c **59c**

Summer Girl Drip or Reg. **COFFEE** 1-Lb. Vac. Can **69c**

Amazo Golden **SYRUP** 1 1/2-Lb. Bottles 2 for **25c**

Mackerel Salomar Pacific, 1-lb. can **19c**

Gaylord Fancy Blue Rose **RICE** 2-Lb. Cello, 37c **27c**

Elna Sliced or Halves **Peaches** Lite Syr. No. 2 1/2 Can **19c**

Telephone Red Pitted **Cherries** No. 2 Cans **2 for 45c**

Food Club Royal Anne **Cherries** Heavy Syrup No. 2 1/2 Can **39c**

No. 1 tall can, 25c. 8-oz. cans, 2 for 25c
Cherries Red Pitted **\$1.29**

Peaches Hannah Eiber- to No. 10 Can **59c**

Worthmore Sliced or Halves **Peaches** Yellow Cling No. 10 Can **69c**

Food Club in Heavy Syrup Fruit **PEARS** Worthmore Bartlett No. 10 Can **89c**

COCKTAIL No. 2 1/2 Can Dozen Cans, 3.45 **29c**

NABISCO

Ritz Crackers 16-Oz. Pkg. **30c**

Fig Newtons 16-Oz. Pkg. **35c**

GAINES

Dog Meal 2-Lb. Pkg. **31c**

IDEAL

Wilson's Dog Food 1-Lb. Can **13c**

PEACHES

Del Monte Yellow Cling Sliced or Halves No. 2 1/2 Can **25c 2 FOR 49c**
Doz. Cans, \$2.89

PINEAPPLE

Del Monte Sliced No. 1 (9-Oz.) Can **15c 2 FOR 29c**
Pineapple Juice, 46-Oz. Can, 39c. Doz. Cans, \$1.73

PEARS

Del Monte Melba Halves No. 2 1/2 Can **33c 2 FOR 65c** Doz. Cans, \$3.89

Plum Preserves

Pure, Full Flavored 16-Oz. Jar **17c 2 FOR 33c** Doz. Jars, \$1.95

LIMA BEANS

Del Monte Blended No. 303 (17-Oz.) Can **27c 2 FOR 53c** Dozen, \$3.12

PEAS

Del Monte Early Garden No. 303 (17-Oz.) Can **20c 2 FOR 39c**
Doz. Cans, \$2.29

CATSUP

Del Monte Fancy 14-Oz. Bottle **20c 2 FOR 39c** Doz. Bottles, \$2.29

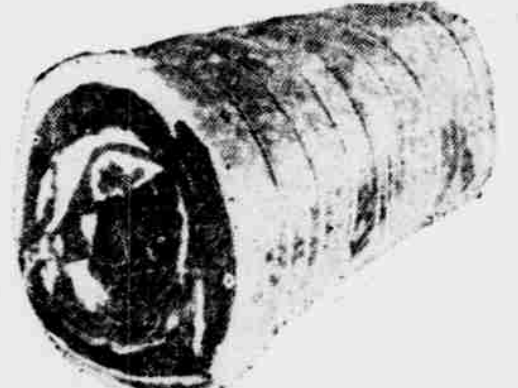
TOMATO JUICE

Del Monte Fancy 46-Oz. Can **29c 2 FOR 57c** Doz. Cans, \$3.35

ROLLED RIB ROAST

E.V.T.—Extra Value Trim
Corn Fed Beef. Boneless

lb. 69c



The King of Steaks

T-Bone Steak lb. **79c**
For Swiss or Frying

ROUND STEAK lb. **79c**

Corn Fed E.V.T.

Sirloin Steak lb. **69c**
Rib Boil lb. **23c**

BOSTON BUTT Pork Roast, Lb. **37c**

PORK ROAST Loin End, Tenderloin in E.V.T., Lb. **39c**

PORK STEAK Sliced Boston Butt, Lb. **45c**

PORK CUTLETS Special E.V.T. Boneless, Lb. **49c**

Bulk Pork

SAUSAGE lb. **29c**

All Meat, Large **BOLOGNA** lb. **45c**

Cello Wrapped **Perch Fillets** lb. **33c**

Layer Pack

BACON lb. **33c**

Skinless, Bulk **WEINERS** lb. **39c**

Cello Wrapped **Whiting Fillets** lb. **27c**

Look What 25c Will Buy ---

Anon Cream Style Golden Bantam **CORN** No. 303 (17-Oz.) Cans **3 for 25c**

Food Club Cream Style Golden Bantam **CORN** No. 303 (17-Oz.) Cans **2 for 25c**

Welch's Fancy **TOMATO JUICE** 46-Oz. Can **25c**

Michigan Maid Pure **APPLE JUICE** 46-Oz. Can **25c**

PRUNE JUICE Food Club Fcy. Quart Bottle **25c**

Taste Sealed Bartlett in Heavy Syrup **PEARS** No. 2 1/2 Can **25c**

ASPARAGUS

Fancy Fresh Tender Long Green Calif. 1-lb. Bundle **19c**

ORANGES Fancy Fla. Sweet Juicy Valencia lb. **10c**
Fancy Calif. Seedless Navels lb. **12c**

Fresh Crisp Solid Calif. Iceberg **LETTUCE** Extra Large 4 Doz. Size Head **15c**

CELERY Fresh Tender Florida Pascal, Large Stalks ea. **15c**

TOMATOES Firm Red Ripe Mexican, Cello. Ctn. **23c**

YAMS U. S. No. 1 Texas Porto Rican lb. **10c**

Nabr. Washed Red Triumph Large Size "A" **POTATOES** 10 lbs. **39c**

U. S. No. 1 Washed Idaho Russets 10-lb. Mesh Bag **59c**

GRAPEFRUIT Florida Marsh Seedless lb. **10c**

CABBAGE Fresh Solid Green New Texas lb. **5c**

CARROTS Calif. Green Top, Large Bunch **9c**

Fcy. & Ext. Fcy. Wash. Winesaps or Delicious **APPLES** lb. **13c**

RADISHES Fancy Full Red, Large Bunch **5c**

U. S. No. 1 Texas Washed Red Triumph **NEW POTATOES** 5 lbs. **29c**

JAMS -- JELLIES -- PRESERVES

Oregon Preserves Pure **PEACH - LOGANBERRY** 16-Oz. Jar, 17c **3 for 49c**

Oregon Preserves Pure **Boysenberry** 3 for **49c**
16-Oz. Jar, 17c

Scully's Pure **GRAPE JAM** 2-Lb. Jar **29c**

Smucker's Pure Plum **Preserves** 2-Lb. Jar, 35c **3 for \$1.00**

Everymeal Pure **APPLE JELLY** 2-Lb. Jar **29c**

Food Club Pure Preserves **Strawberry** 16-Oz. Tumbler 2-Lb. Jar, 73c **39c**

Wathena Pure **Apple Butter** 28-Oz. Jar **21c**

CALLING ALL CARDS Hinky Dinky's Household Institute Aluminumware offer ends Wednesday, April 22. No cards accepted after that date.

MY-T-FINE

Puddings
Choc. Nut, Choc. Lemon or Vanilla
Pkg of 4 **25c**

ALBERT'S

Italian Chef Salad Dressing
8-Oz. Jar **37c**

AMERICAN BEAUTY

Salad-Eoni
16-Oz. Pkg. **21c**

OMAR

Hot Roll Mix 14 1/2-Oz. Pkg. **27c**
Biscuit Mix 20-Oz. Pkg. **29c**

Aunt Nellie's

Shoestring Beets 16-Oz. Jar **14c**
Fancy Whole No. 2 Can **17c**

HEINZ

Fresh Cucumber Pickles 16-oz. jar **25c**
Cooked Macaroni Cheese 15 1/2-oz. **18c**



Ad effective thru Wed., April 26th, except fresh fruits, vegetables and meats effective thru Sat., April 15th. We reserve the right to limit quantities. No sales to dealers.