

## CAPITOL NEWS

LINCOLN—Gov. Val Peterson this week had press and personnel problems. Really, it was all one problem.

It began several days ago when The Lincoln Journal remarked in an editorial that State Resources Division Director Allen Dowling's job had been offered to another man, and it was refused.

Two days later Dowling announced his resignation, effective when a successor had been chosen.

"Reports now published suggest the advisability of releasing this statement," he said. The Journal quoted Rufus Howard, director of agriculture, and Dowling's superior, as saying the former Lincoln, Omaha and Beatrice newspaperman was fired.

The governor, who had asked the legislature for a big increase in the resources division appropriation, said he "regretted" Dowling's resignation. "I think he has done an outstanding job in establishing the division," the governor said.

Meanwhile, the Nebraska press carried an "it was learned" story saying that Dr. Byron H. Baer, 54-year-old Ashland physician would soon be announced by the governor as the successor to Dr. W. S. Petty as state health director.

Dr. Baer later said he had not yet decided whether to take the position and would not comment until he had talked with the governor.

At his press conference, Gov. Peterson declined to discuss the matter beyond saying the \$5,500 a year job still is open.

Dr. Baer, a graduate of the University of Nebraska medical college, has been practicing at Ashland since September, 1931.

It was evident to reporters that the governor was miffed at the press handling of both the Dowling and Baer stories. And statehouse observers are well aware that the chief executive prefers to release any appointments or resignations from his office, rather than have them appear first in the papers.

The Nebraska Farm Council, sponsors of referendum petitions opposing increased motor vehicle registration fees, lost only 7,630 signatures through invalidity, a check of the petitions by the secretary of state's staff showed. This left 37,048 signatures, well above the 23,817 required to place the issue on the 1950 ballot.

Checking was not complete at week's end on petitions opposing the penny-a-gallon gasoline tax increase.

George Morris, superintendent of the Nebraska state reformatory for men, had some things to say in his biennial report to the board of control.

"There is a very strong indica-

tion that the greatest drawback to parole in Nebraska at the present time," he said, "is a lack of supervisory personnel. This same lack of personnel can be found in the supervision of individuals placed on probation by the courts."

The reformatory superintendent urged, "in every judicial district a probation officer of the highest type, paid an adequate salary to insure that supervision is carried out in the best way possible, as intended by the law."

Morris attacked the present system as inadequate. He said an individual cannot be paroled to a community without its first agreeing to participate in the parole plan. It is essential, he said, that an institution accept the responsibility of developing the necessary contact in the community to insure acceptance of the individual.

Governor Peterson was forced to decline two speaking engagements in California, offered him by the national Republican organization, because of a heavy schedule. On Sept. 19, the governor will go to Kansas City to serve as chairman of a symposium on public works at the annual session of the Public Works Association. He will be in Kansas City again Oct. 3 to address a special meeting of the Mississippi Valley Association.

The governor said that because the Missouri basin Interagency committee meets Sept. 22-23 at Cody, Wyo., he won't be able to attend the G. O. P. farm meeting at Sioux City on Sept. 23-24.

While the state fair occupied most of the spotlight here last week, there were these other developments:

Sen. John Callan, Odell, chairman of the legislative council's committee on budgetary procedures, said his group is undertaking a study of operation costs of state agencies. He reported "considerable progress" which will "be of benefit to the next legislature."

Herbert Hann, new warden at the state penitentiary, will assume his duties about Oct. 1, said Forrest Johnston, board of control chairman.

State Treasurer Edward Gillette reported that the state had a cash balance of \$12,492,505 on Aug. 31, from current revenue funds, excluding \$1,625,031, in outstanding warrants.

Henry Bartling, secretary of the state board of agricultural lands and funds, said Nebraska received \$113,251 from July 1, 1948 to August 15, 1949, from leasing oil, gas and agricultural rights to 61,320 acres of state-owned school land.

### BLIND GET RIGHT OF WAY

Boston (U. P.) — A new Massachusetts law makes every blind person a traffic officer. Under the act, motorists failing to stop when a blind person extends his white cane or starts across a street with a seeing-eye dog are subjects to a \$25 fine.

A classified Ad in The Journal costs as little as 35c.

SMART SHOPPERS  
Shop For Quality

Stock up with  
**FOOD CLUB**

**STAR FOOD SALE!**

**GRAPEFRUIT JUICE** Elna Brand (Dozen cans 2.75) 23c  
Sapphire Lite Meat Chunk Slice, Not Grated, 7 oz. Can 33c  
**TUNA FISH** Elna Brand Grated 6-oz. Can 29c  
**SALAD DRESSING** Elna Brand Full Quart Jar 39c  
**DOG FOOD** Dog Club Introductory Offer One Can Free with Three at Regular Price 4 for 29c



## FOOD CLUB

Quality Controlled Food Products

**ORANGE JUICE** Food Club Fancy, 46 oz. Can 39c  
No. 2 Cans 2 for 35c

**ORANGE SEGMENTS** Food Club No. 2 Can 23c  
Dozen Cans 2.75

**BOYSENBERRIES** Food Club Fancy In Heavy Syrup 8-oz. Cans 2 for 25c  
No. 1 (16 oz.) Cans 19c

**CHERRIES** Food Club Red Pitted No. 2 Can 25c  
Food Club Royal Anne Cherries, No. 2 1/2 Can 39c

**PEARS** Food Club Bartlett Halves In Heavy Syrup, No. 2 1/2 Can 33c

**CHEESE** Food Club American or Pimento Sliced or Piece, Lb. 49c

**PRESERVES** Food Club Pure Apricot 1-Lb. Jar 27c

**GRAPEFRUIT** Sections, Food Club Sweet, No. 2 Can 19c

**SALAD** Sections, Food Club Orange and Grapefruit, No. 2 Can 23c

**PEACHES** Food Club Sliced or Halves, No. 2 1/2 Can 29c

**MAYONNAISE** Food Club Fancy, 8 oz. Jar 26c  
Food Club Salad Dressing, Pint Jar 31c

**FOOD CLUB MILK** Enriched Tall Can 11c



### FRUIT COCKTAIL

Bellecrest brand. A delicious dessert. Ready-to-serve. No. 2 1/2 Can 33c

**PORK & BEANS** Elna Brand No. 300 (16 oz.) Cans, 3 for 29c  
No. 2 1/2 Cans 3 for 49c

**TOMATOES** Pinecone Full Standard Quality No. 2 Cans 23c

### FRUITS-VEGETABLES

Fancy Illinois Red Snappy Jonathans **APPLES** 3 lbs. 25c  
Ring Pack Full Bushel Basket \$2.79

U. S. No. 1 Calif. Red Flame Tokay **GRAPES** Large Cluster Bunches lb. 10c

Calif. White Snowball **CAULIFLOWER** lb. 15c

Fresh Green Solid **CABBAGE** lb. 5c

Calif. Green Top **CARROTS** Lge. 10c  
Bun. 10c

U. S. No. 1 Texas Porto Rican **YAMS** lb. 10c

Fresh Tender Utah Green Pascal **CELERY** Lge. 19c  
Stalk

U. S. No. 1 Red, Lge. Size A, Washed **POTATOES** 10 lbs. 45c

Individual Size **SQUASH** lb. 5c  
**HUBBARD SQUASH** lb. 4c

**VINEGAR** Sunrise Cider for Pickles, etc. 56-oz. Jug 33c

**WHITE VINEGAR** Rich Nut 100 oz. Jug 39c

**PICKLING SPIGE** 8 oz. Pkg. 29c

**Town House** Crackers, Just Right for 2 Bites! 1 Lb. Pkg. 31c

**MACARON** SNAPS Sunshine Cookies 9 1/2 oz. Pkg. 27c

**ALL STAR MIX CANDY** 1 Lb. Cello 19c

**GANDY CORN** Three Color 1 Lb. Cello 29c

Clarks **PEANUT BLOSSOM KISSES** 14-oz. Cello 25c

**KUNER'S** Champion Ext. Std. Peas No. 2 Can 15c

**ROB ROSS** Assorted Gelatin Desserts Reg. Pkg. 5c

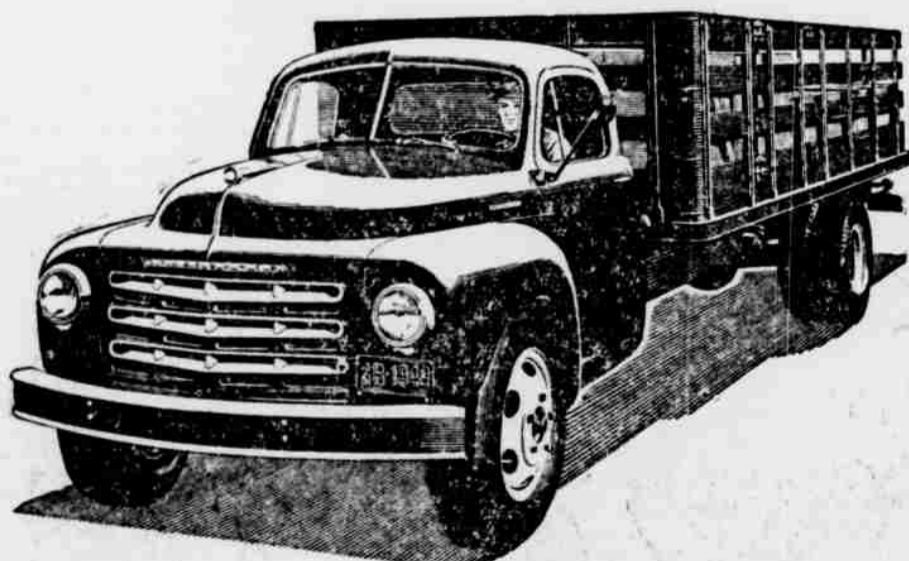
**WILSON'S CORN BEEF** 12 oz. Can 45c

**WILSON'S B. V.** Meat Extract 2 1/2 oz. Jar 31c

**HINKY DINKY** Special Deal! Woodbury Toilet Soaps 4 Reg. 31c

Ad effective full week thru Wed., Sept. 21, except Meats, Fresh Fruits and Vegetables effective thru Sat., Sept. 17 only. We reserve the right to limit quantities. No sales to dealers.

They're stand-outs  
in pulling power and staying power!  
**STUDEBAKER TRUCKS**



- Owner after owner reports that Studebaker trucks out-perform and out-economize anything on wheels of their size and wheelbase!
- Owner after owner reports that drivers prefer the easy-handling, restful-riding new Studebakers to any other trucks in a fleet.
- Stop in and check up on the out-ahead design, out-ahead ruggedness, out-ahead gas economy, out-ahead value of the new Studebaker trucks.

**WIYSEL AUTO SERVICE**

"Studebaker Sales & Service"

2nd & Chicago Ave.

Dial 4157

Add Zest to Every Meal

**HEINZ KETCHUP** 14 oz. Bottle 24c

**HEINZ** Cooked Macaroni & Cheese 15 1/2 oz. Can 18c

**HEINZ** Pure Grape Jelly 10 oz. Tumbler 25c

**SWANSON** Giblet Noodle Dinner 1-Lb. Can 25c

**HY POWER** Tamales No. 300 (15 1/2 oz) Can 21c

**HY POWER** Chili With Beans No. 300 (15 1/2 oz) Can 27c

**Omar Hot Roll Mix**

Serve Hot Rolls for a Real Treat. It's Easy With Omar Mix, 14-oz. Pkg. 27c

**SIoux BEE** Honey Creme 1 Lb. Jar 31c

**Blue Diamond** Fancy Diced Carrots No. 1 Can 10c

**WAXTEX** Ideal for School Lunches 125 foot Roll 23c

### QUALITY MEATS

U. S. Grade Good, Cornfed Beef, "Custom Aged," Round, Tender and Flavorful **Swiss Steak** lb. 79c

U. S. Grade Good, "Custom-Aged" Beef, E. V. T. **Rump Roast** lb. 69c

**Beef Heel Meat** lb. 69c

Delicious When Braised and Served With Bar-B-Q Sauce **Rib Boil** 2 lbs. 35c

Selected Beef Cuts, Freshly Ground **Ground Beef** lb. 39c

Hickory Smoked, Sugar Cured, Serve Cold or Heat **Ready-to-Eat Hams** lb. 59c

Armour's Layer Packed, Sliced **Bacon** lb. 45c

Medium Average **Spare Ribs** lb. 39c

Country Style **Pork Sausage** lb. 33c

Cudahy's Puritan, Large or Ring **Bologna** lb. 45c

Assorted Top Quality **Baked Loaves** lb. 39c

**THURINGER** Summer Sausage lb. 59c

Betty Brownell, Homemade **Potato Salad** lb. 23c

Armour's Spanico, Brick or Tube **Chili** 39c

**BABY BEEF OR HEAVY VEAL** Roast, Blade or Arm lb. 45c

Rib Chops lb. 55c  
Round Steak lb. 75c  
Sirloin Steak lb. 69c  
Veal Breast lb. 25c