

# Supplement To THE FALLS CITY TRIBUNE.

FALLS CITY, NEBRASKA, FRIDAY APRIL 15th, 1910.

## THE PLACE FOR YOU. Where Earnest Effort Is Honestly Rewarded.

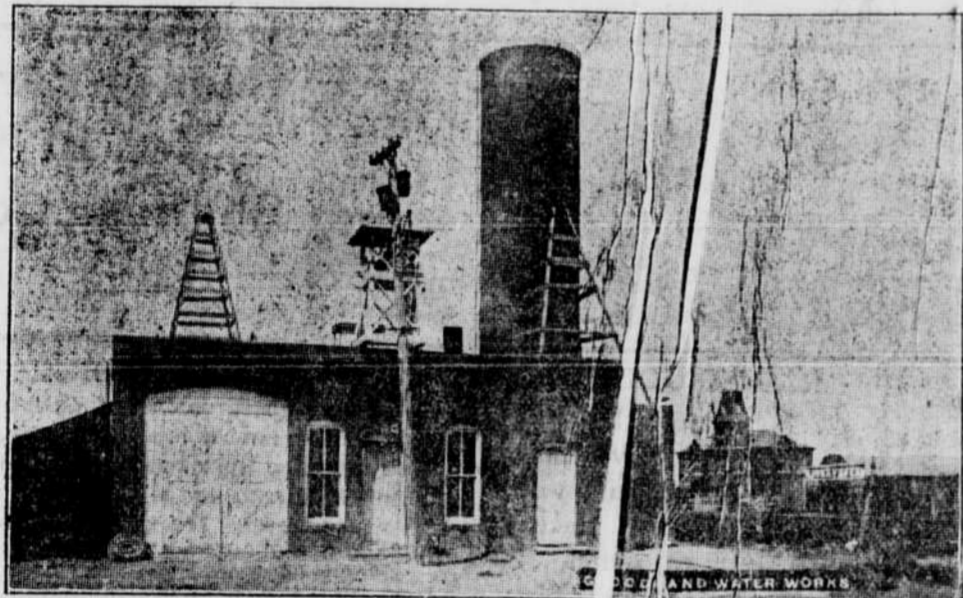
Something Regarding a Section of the United States Which is  
Now Attracting Thousands of our people by the Splendid  
Inducements Offered. A Land of Sunshine, Good  
Health, Good Crops, Good People; In and About  
Goodland, Kansas.

Sherman county is the extreme western county in the state of Kansas, second tier south. It is 30x36 miles in area affording 4,320 homes of 160 acres each.

We can offer the investor or the homeseeker land at a very moderate price, where the soil is a rich black vegetable loam ten inches to several feet deep. Our climate too, is good. The winters are short and not very cold, the summers pleasant and not sultry, hot weather as is usually found in the east. We have an abundance of soft water at a depth of from twenty to one hundred and fifty feet. This is sheet water and never failing. Our soil produces fine crops of wheat, oats, corn, barley and rye. Flax has been tried with good success. Alfalfa also is gaining favor and produces fine crops where tried. Our land should not only double but even treble its price in a few years. A large acreage of broom corn will be put out this season.

gregational and Episcopal; an opera house and well conducted city library. There is more than a fair prospect for a north and south railroad through Sherman county in the near future. A company, with Col. C. C. Godman, a rail road builder of national reputation, at its head, has completed a survey from Oklahoma City, where traffic arrangements through to the gulf have been arranged, to St. Francis, from which point it is to be extended to Denver. Grading outfits have been purchased and active construction work will commence this spring.

We do not make this statement that one may buy land here, expecting to have a new railroad right at their house, as we all know that occasionally a company will put quite a bit of expense on a venture and then it will not materialize, but we certainly expect this new road and will be much disappointed if it is not built. This is an excellent time to buy land

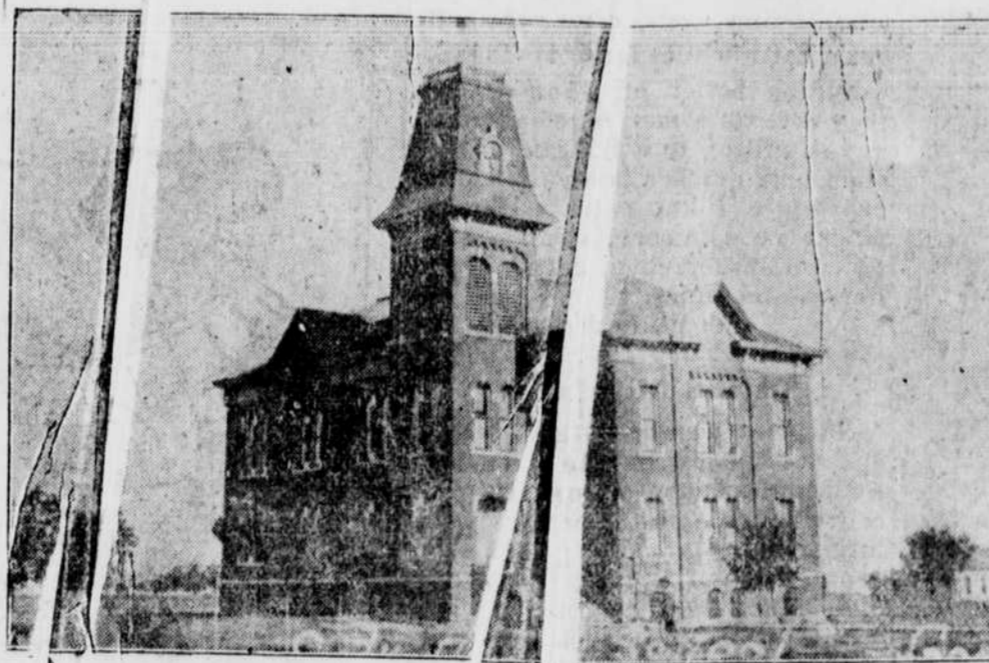


Goodland Water Works. Public School Building in the distance.

We all know when land in eastern Kansas and Nebraska could be purchased for \$8 to \$12 per acre and no buyer—thought it too cheap to be good. Now the same land is selling from \$60 to \$100 an acre and in good demand. The money that has been made in Iowa and Illinois, also in eastern Kansas and Nebraska is mostly in the raise of price in lands. It was but a few years ago if a man had a quarter of land he was not considered to be well fixed, but now it is worth about \$15,000, and this same man is well fixed and has no more land than he had before. The same proposition awaits the investor or homeseeker here today that went begging in the eastern states such a short time ago.

Goodland, the county seat of Sherman county, on the main line of the Rock Island 196 miles east of Denver and 425 miles west of Kansas City, has a population 3,000 and is a prosperous, progressive town growing very rapidly. Equipped with modern improvements—electric lights, telephone, and a fine system of water works. We have three banks and other business lines are well represented and in a very prosperous condition. There are two large brick school buildings with an efficient corps of teachers, five church buildings; Catholic, Methodist, Christian, Con-

and get the raise in price quickly. We can sell land with a good black loam soil that lays fine, underlaid with an abundance of soft water, and an average depth of about 75 feet, a bottom sand, stone or gravel, located on the F. D. route and rural telephones, at from \$12.50 to \$70 per acre and just think what this means when it adjoins land that is raising wheat 25 to 30 bushels to the acre; bar-



Goodland Public School Building.

ley 65 bushels, and just as good corn as is grown in eastern Nebraska or Iowa.

The safest place for your money is in the ground, not buried but invested in low priced lands. Investigate this section.

We will be pleased to correspond with any one seeking an investment or a pleasant and profitable farm home.

T. V. LOWE REALTY CO.  
Goodland, Kansas.

### YOU SHOULD KNOW.

That Kansas is one of the greatest states in the Union.

That Kansas will be one of the wealthiest states in the United States.

That Kansas is the greatest wheat producing state in the United States.

That the crops alone raised in Kansas every year amount to more money than all the gold produced in a single year in all the mines in the United States and Alaska combined.

That Kansas is the healthiest state in the United States.

That Goodland is the county seat of Sherman county, Kansas, and that it is the best town on the Rock Island railroad between Topeka, Kansas, and Denver, Colorado.

That we have good schools, a good library, good homes, good social privileges and as good, whole-souled people as you will find anywhere.

That Sherman county is the best place in the state in which to invest capital.

That Sherman county is the smoothest county in the state of Kansas, and that 95 per cent of it can be farmed with modern farm machinery.

That it does not pay Sherman county to maintain a county poor house, and that the county commissioners have rented it to a private family.

That Sherman county is entirely out of debt.

That the soil of Sherman county is a dark, rich soil, from two and one-half to five feet in depth; that it grows all kinds of grain and crops in great abundance, and that it is underlaid, within easy reach, of a never-failing supply of the purest and sweetest water in this wide world.

That every acre of farm land in this county will rise in value from one to two dollars per acre for ever year you live. Think one minute! It did this in Iowa, Illinois and other eastern states.

That our people are prosperous and happy and that many of them are getting on Easy Street, that you may be one of these, and that it will pay you to investigate for yourself and secure some of our choice bargains while they can still be bought at a low figure.

That most of the men who are rich in the eastern states are men who bought land when it was low in value, improved it, and held on.

That you are not making anything by renting back east and that with the same amount of energy here you will soon have a good home of your own.

That we do not want you to take our statements without thoroughly investigating for yourself.

That we will be glad to assist you in any way.

That our long residence in this section puts us in possession of much information that can be yours for the asking.

THE T. V. LOWE REALTY CO.

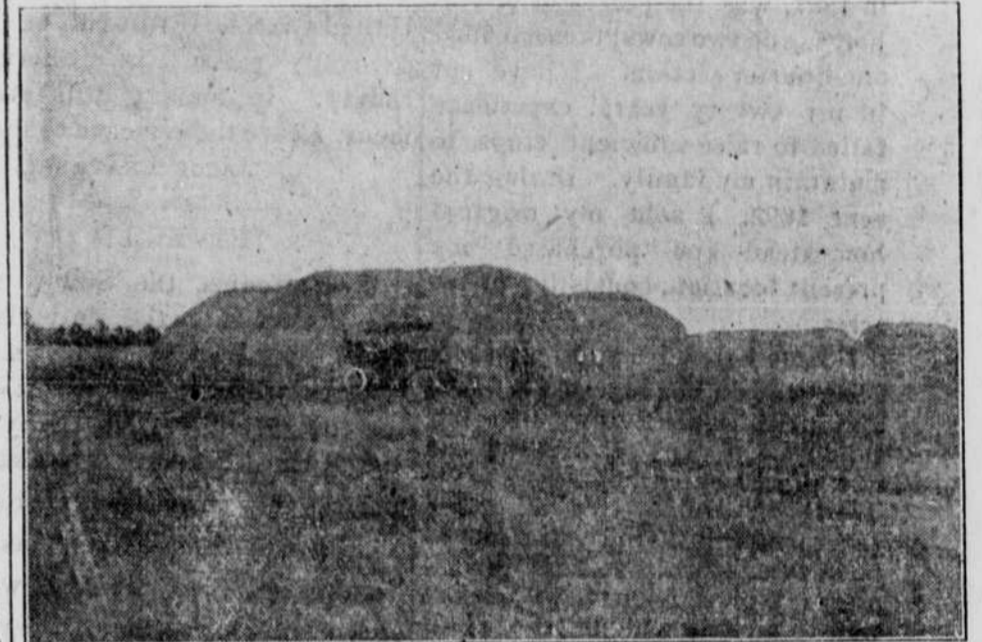
### THE CENTER OF INTELLIGENCE.

Take a map of the United States. Sit down and look it over carefully. Locate Goodland, in Sherman county, Kansas. It is only a few miles from the geographical center of the greatest country on the entire earth. From the time of the settlement at Jamestown, Virginia, as the hardy pioneer pushed his way westward bringing all that accompanies the highest type of civilization; schools, churches, railroads, telephones, electric railroads, rural free delivery of the mail, etc, the price of land has steadily risen in value, practically double that either north or south of this latitude. Here reside the scholar, statesman and successful

### TRUTH.

Truth demonstrates the ideal home. Within its walls, love entertains the stranger, washes the feet of the pilgrim, and feeds from its sumptuous board those who are hungering and thirsting after righteousness. Truth inspires in man confidence, not only in himself but in his brother. Truth enables woman to find her true womanhood, and man to realize his true manhood. Truth brings to its possessor the innate charm of loveliness and beauty, outshining and transcending all material or physical adornment. Selected

The Sherman County Agricultural Society and Racing Association has a good track and grounds at Goodland.



Headed Wheat on T. V. Lowe's Place three miles south of Goodland.

business man. Washington, Patrick Henry, Henry Clay, Daniel Boone, Lincoln, Grant, Lee, Garfield, McKinley, Bryan, Taft, and many others might be mentioned as having lived or now living in this Great Belt of Fertile Soil and Successful People. Here also reside Joseph Wing, the writer on agricultural topics and our own Coburn, of Kansas, the only man who ever declined a United States Senatorship in order to direct the agricultural affairs of a great state. From the little town of Goodland a young lady recently graduated from the County High School and went to the State University where she stood first in her studies last year. The soil and climate conditions are right to develop a high type of man and beast. Not out what there are other good sections of our country, but study our section of latitude and you will find that more rapid gains are made all along of these lines here than in either the extreme north or south.

Secretary of Agriculture James Wilson, Secretary Coburn, the great agricultural expert of Kansas, and Joseph Wing, the noted writer of The Breeders Gazette; all unite in pronouncing this section of the United States good. Men of intelligence, willing to work, will find that they can accomplish a great deal here with comparatively little capital. The opportunity time is now.

### IT COSTS NOTHING.

Come to Goodland, Kansas,  
Look Over The Choice Lands,  
And Invest.

### EXPENSES OF TRIP PAID,

If You Purchase Land of  
The T. V. Lowe Realty Co.

A representative of the T. V. Lowe Realty Company will be in your city Tuesday and Wednesday of next week. Look him up and talk matters over with him. Arrangements can then be made for you to personally visit this country and see what you want. Remember the dates—Tuesday and Wednesday of next week. Consult the dates on this paper and make no mistake.

### COME ON BOYS.

J. L. Crafts, a Sherman county farmer living near Edson, who came to this country a couple of years ago, has written a letter to his old home paper, the Bethany (Mo.) Republican, in which Mr. Crafts says in part:

"I think this is the coming country. The chances here are good for a poor man or a man of limited means if he should come soon. If any of you Harrison county people want to go to a new country, why not come to Kansas, the Sunflower state, the home of the jack rabbit and automobiles.

Land here now is very cheap but the price is advancing rapidly. Quite a good many homeseekers came in here this winter and we expect more to come in the spring. An outfit of Russians came here; yes, they are after land in Kansas. From the east and from the west comes a steady rush of people who are looking for the best, and they take a look at Kansas, and as quickly as they can they buy some of this prairie, and it is sure a winning plan."

### FRUIT AND FOLIAGE TREES

March 2, 1910.  
D. M. Gorman, box 765, Fremont, Nebraska, proprietor of the Plumfield Nurseries, was met at Norton, Kansas, en route home after a two-weeks visit at Goodland, where he drove over much of the country of Sherman and examined it with regard to its tree growing qualities. Mr. Gorman has been in the nursery work all of his life and has made a study of this section of the country. He does not hesitate to say that certain kinds of trees thrive. He found a number of good orchards near Goodland. One man raised 600 bushels of apples last season. The red elm, linden tree, hickory, soft maple and red cedar are among the trees which grow well in Sherman county. Ash, honey locust and box elder are not good trees to put out on account of borers. The Tubbs, a late starting early cherry, he recommended. It is a hardy, prolific bearer. The Early Richmond grows well but starts early and frost frequently kills the fruit buds. The dyehouse and Wraggencherries are all right. He has a Concord grape bud on a wild grape root which is a satisfactory grape for this section. The Chickesaw family of plums, a family grafted on the wild plum, is satisfactory. He advises the farmers to keep in touch with the experiment stations and profit from what they are learning there regarding plants for this section. He says there is no question in his mind but what alfalfa will be a great crop in Sherman county when it is properly cared for.

E. J. MITCHELL

LARGE SIFTER CAN

and have their roots and sources in ready to taste and... the republics of the homes of the Greek scholar is no more efficient... was Falls City's first school master. "He gave the waiter some money..." G. WHITE