

Fall & Winter Stock.

The Times are Hard!

Our Goods are Cheap!

Profits Nowhere this Winter!

SPECIALTIES FOR THIS WEEK!

DRESS GOODS AT 8c AND 10c.

FLANNELS CUT IN TWO.

CHILDREN'S CLOAKS AT COST.

MEN'S AND BOYS' CLOTHING

AT ACTUAL EASTERN COST TO CLOSE.

WE HAVE ADDED

TRUNKS AND VALISES

TO OUR STOCK.

COME AND SEE US.

L. Lowman & Son.

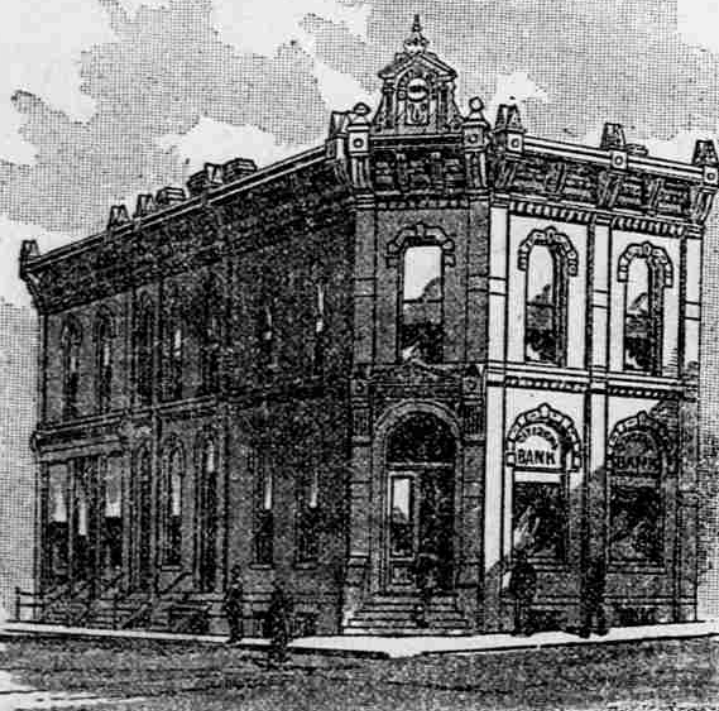
The First National Bank.

AUTHORIZED CAPITAL,
\$100,000.



CAPITAL AND SURPLUS,
\$60,000.

GEORGE HOCKNELL, President. B. M. FREES, Vice President. W. F. LAWSON, Cashier.
A. CAMPBELL, Director. S. L. GREEN, Director.



The Citizens Bank of McCook.
Incorporated under State Laws.
Paid Up Capital, \$50,000.

General Banking Business.

Collections made on all accessible points. Drafts drawn directly on principal cities in Europe. Taxes paid for non-residents. Money to loan on farming lands, city and personal property.

Tickets For Sale to and from Europe

OFFICERS:
V. FRANKLIN, President. JOHN R. CLARK, Vice Pres.
A. C. EBERT, Cashier. THOS. I. GLASSCOTT, Ass. Cash.
CORRESPONDENTS:
The First National Bank, Lincoln, Nebraska.
The Chemical National Bank, New York City.

BANK OF McCOOK

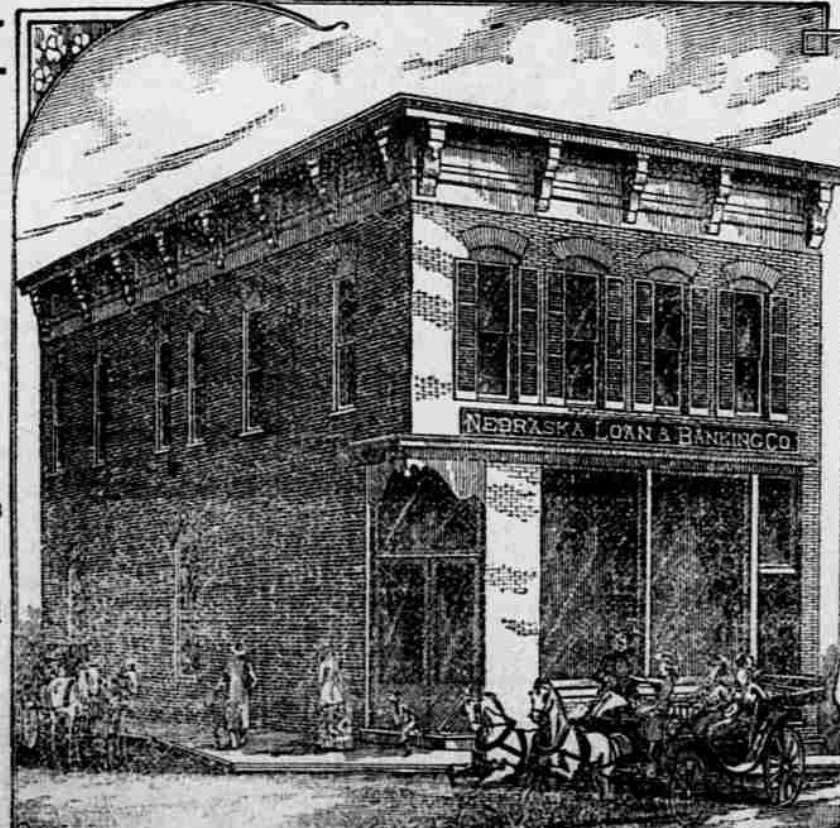
Paid Up Capital, \$50,000.

General Banking Business

Interest paid on deposits by special agreement.
Money loaned on personal property, good signatures or satisfactory collateral.
Drafts drawn on the principal cities of the United States and Europe.

OFFICERS:

C. E. SHAW, President. JAY OLNEY, Vice President.
CHAS. A. VANPELT, Cash. P. A. WELLS, Ass. Cashier.



PRESS BULLETIN NO. 5.

Agricultural Experiment Station of Nebraska.

SUGGESTIONS TO BEET GROWERS.

Because of the great importance of the sugar industry to this state, the experiment station has undertaken the labor and expense of collecting data to show whether or not Nebraska can raise beets sufficiently rich in sugar to make this industry a success.

To this end we distributed seed last year as widely as possible under the circumstances. The results of this work have been already published as Bulletin No. 13, Agricultural Experiment Station.

This year there has been an almost universal interest manifested throughout the state in the subject of sugar beets. A large amount of seed has been distributed with suggestions as to the manner of cultivating, etc. Many farmers have already sent us specimens of beets for analysis, together with partial reports of their experiments during the season. Again let me urge upon everyone who has experimented in beet raising this year to complete his work by sending to us, for analysis, specimens of beets, together with as full a record of his work as possible. If you stop short of this all of your labor, so far as furnishing facts for the benefit of the people of the state is concerned, has been in vain. The analysis costs you nothing, and this year you can send beets at our expense. In sending please remember to attach to each beet its name, and with each lot sent give post office address, including county.

For complete directions as to sending specimens, see pages 2 and 81, Bulletin 13, copy of which will be sent you on application, if you have not it at hand.

Already many persons throughout the state have expressed a desire to continue the work of growing experimental plots and numerous inquiries have been received for seed and for more information in regard to cultivation. In answer to these the following suggestions are made:

SECTION OF SOIL.
A good "sugar beet soil" is a deep moist loam that has been under cultivation for some years and is underlain by a porous subsoil. It should be deep, as the roots seek their nourishment at a considerable depth. It should have a porous subsoil that a good drainage on the one hand and a good reservoir for moisture on the other, may be had. The best localities are those on level or slightly sloping land, protected from the strong winds of early spring.

PREPARATION FOR PLANTING
should be made this autumn by plowing as deep as possible (twelve to fourteen inches). If shallow plowing has heretofore been the rule, deep cultivation should be reached gradually by plowing two or three inches deeper until the proper depth has been reached. In the spring plow again thoroughly, pulverize the soil and plow or roll it. Measure exactly the ground to be sown (say a space ten feet square for each variety of seed); this is absolutely necessary in order to estimate accurately the yield.

THE TIME OF PLANTING
is important and should be governed largely by the temperature (or the temperature of the soil) is from 48 to 50 degrees, F.; usually from the middle of April to the first of May. The seed should be planted in rows from fifteen to eighteen inches apart, and covered to a depth of from three-fourths of an inch to an inch. After seeding, roll the plats to keep the seed from being uncovered by the wind. When the young plants appear the ground should be hoed to prevent drying out and to keep the weeds down. When the plants have reached the fourth leaf, thin to a distance of from six to eight inches apart according as the soil is rich or poor. Hoe frequently until the leaves cover the ground.

The Experiment Station will furnish seed for experimental planting, of the best varieties, to all persons applying for same and enclosing two cent stamp to pay return postage on seed. We require further that each person taking seed for the season of 1891 shall agree to send samples of beets to the station for analysis without cost to us. We will make the analysis, collect information, publish results and furnish each correspondent with a copy of the bulletin free.

HUDSON H. NICHOLSON,
Director of the Station.

Merit Wins.

We desire to say to our citizens, that for years we have been selling Dr. King's New Discovery for Consumption, Dr. King's New Life Pills, Bucklen's Arnica Salve and Electric Bitters, and never handled remedies that sell as well, or have given such universal satisfaction. We do not hesitate to guarantee them every time, and we stand ready to refund the purchase price, if satisfactory results do not follow their use. These remedies have won their great popularity purely on their merits.

NOTES FROM THE NORTH EAST.

An inspiring quarterly meeting was held at Mt. Zion, last Saturday and Sunday. Elder Mastin's sermon was greatly pleasing.

Miss Lena Beck closed her term of school, last Friday, and gave a fine spelling entertainment in the evening. BLACKFAN.

Worth Knowing.

It is not the cough that kills but what it leads to—cough, colds and bronchitis are always cured by Humphrey's Specifics Nos. one and seven, being used by thousands with the most triumphant success.

THE McCOOK BUSINESS COLLEGE.

Now Contains Four Complete Departments:
COMMERCIAL,
SHORTHAND and TYPEWRITING,
ENGLISH and GERMAN.

Any one of the above mentioned, will prepare a person to enter into usefulness for life. Special terms for all combined.
C. M. LOPER, Manager.

DRYSDALE

—THE—

TAILOR,

From New York City, has the most complete stock of Fall and Winter Goods, for men's wear, between Lincoln and Denver. His store is just replete with the latest novelties from New York and Chicago, and as he buys strictly for cash he can afford to give you first class clothing at very reasonable prices. He has guaranteed every garment he has made up in McCook for nearly six years and has never had a misfit in that time. Call and see him. One door north of the Commercial House.

Fall and Winter Goods Cheap!

You can buy of us now your winter goods, such as COTTON and WOOLEN FLANNELS, TRICOTS and SUITING FLANNELS, HENRIETTAS and other lines of dress goods at lower prices than we have ever before sold them.

We have over \$3,000 worth of BOOTS & SHOES which we are selling at less than regular prices. Don't fail to compare prices with other houses.--New stock of HATS & CAPS.

In Groceries we take the lead. With a bill of \$20 cash will give you a complete library of cookery--three volumes in one.

WILCOX & FOWLER.

Fine Fabrics--Stylish Productions.

A. KALSTEDT, THE TAILOR.

Carries the latest and most fashionable goods of the fall and winter season, in suitings, pantings, and overcoatings. He guarantees satisfactory, stylish work, and reasonable prices. In rear of the First National Bank Building, McCook, Nebraska.

LAND OFFICE AT McCOOK, NEB.,

October 24th, 1890.
Notice is hereby given that the following named settler has filed notice of his intention to make final five year proof in support of his claim, and that said proof will be made before Register or Receiver at McCook, Neb., on Saturday, December 6th, 1890, viz:

HENRY H. ANDREWS,
H. E. No. 3211 for the S. W. 1/4 of Sec. 31, in town 1, north of range 27, west of 6th P. M. He names the following witnesses to prove his continuous residence upon, and cultivation of, said land, viz: Ben B. Smiley, William J. Stillebauer, George W. Davis and James H. Everist all of Danbury, Neb.
S. P. HART, Register.

Notice of Sale Under Chattel Mortgage

Notice is hereby given that by virtue of a chattel mortgage dated February 30, 1890, and duly filed in the office of the county clerk of Red Willow county, Nebraska, and executed by Paul Eiser to E. Lindner to secure the payment of the sum of One Hundred and Eighty Dollars, and upon which there is now due the sum of \$180.00 and interest from February 30, 1890, at the rate of 10 per cent, annually. Default having been made in the payment of said sum and no other proceedings at law having been instituted to recover said debt or any part thereof, I will sell the property therein described, to-wit: One gray horse about 10 years old, one gray horse about 11 years old, one red cow about 5 years old, one red cow about 4 years old, one red heifer about 2 years old, and all the increase of above mentioned cows, one second-hand farm wagon, one second hand farm harness; at public auction on the corner of Main Avenue and Dennison street, in McCook, Neb., on Saturday, November 8th, 1890, at 2 o'clock, P. M., central time. Dated, October 24th, 1890. E. LINDNER.

Henry Ballreich and Mrs. Henry Ballreich, whose first name is unknown, will take notice that on the 6th day of August, 1890, the plaintiff Emily O. Gibbs, filed her petition in the district court of Red Willow county, Nebraska, against said Henry Ballreich and Mrs. Henry Ballreich, his wife, the object and prayer of which are to foreclose a certain mortgage upon the northwest quarter of section eleven, township one, range thirty, west of the 6th P. M. in Red Willow county, Nebraska, given to secure the payment of one principal note and ten interest coupon notes all dated September 1, 1887, the principal note for the sum of \$900 due five years, the ten interest notes each for the sum of \$20.00, the first maturing on the first day of March, 1888, and one maturing every six months thereafter until the maturity of the last of said ten notes on the first day of September, 1892. That default has been made in the payment of two of said interest notes, the conditions of said mortgage have been broken, and under the conditions of said mortgages there is now due on said notes the sum of \$940.00 with interest at the rate of ten per cent, and on \$21.00 thereof from the first day of September, 1889. That the defendant Henry Ballreich be required to pay said sum and interest or that said mortgage be foreclosed and said premises be sold according to law and the proceeds of said sale be applied to the payment of said debt.

You are required to answer this petition on or before the 1st day of December, 1890. Dated this 20th day of October, 1890.
W. S. MORLAN, Her Attorney. EMILY O. GIBBS, Plaintiff.

LAND OFFICE AT McCOOK, NEB.,

October 24th, 1890.
Notice is hereby given that the following named settler has filed notice of his intention to make final proof in support of his claim, and that said proof will be made before Register or Receiver at McCook, Neb., on Monday, December 1st, 1890, viz:

TOWNSHIP BROWN,
H. E. No. 4980 for the N. E. 1/4 section 2, township 1, north of range 29, west 6th P. M. He names the following witnesses to prove his continuous residence upon and cultivation of, said land, viz: Frank Garlick of Quiek, Neb., Robert B. Duncan, Frank Schoonover and Philetus B. Alexander of Box Elder, Neb.
S. P. HART, Register.

LAND OFFICE AT McCOOK, NEB.,

October 25th, 1890.
Notice is hereby given that the following named settler has filed notice of his intention to make final five year proof in support of his claim, and that said proof will be made before Register or Receiver at McCook, Neb., on Saturday, December 6th, 1890, viz:

RICHARD M. WADE,
H. E. No. 2919 for the N. E. 1/4 of section 35, in town 2, north of range 30, west 6th P. M. He names the following witnesses to prove his continuous residence upon, and cultivation of, said land, viz: Frank Albright, Mrs. Lavilla J. Burtless, Joseph A. Brewer, James Cain, all of McCook, Neb.
S. P. HART, Register.

TEAMSTERS.



You work in all weather. You want an "all-weather" coat. In fact, the best waterproof coat in the world. No frail rubber affair that will rip before the week is out. Rubber costs more, lasts but a short time. Four teamsters out of five wear the "Fish Brand" waterproof clothing. They are the only teamsters' waterproof coats that are light, strong, durable, and cheap. They cost very little, and last a long time. They never get sticky or peel off. The buttons are wire-fastened, and never come off. They are absolutely waterproof and wind-proof. Until you own one you will never know the comfort of a rainy day. Beware of worthless imitations, every garment stamped with the "Fish Brand" Trade Mark. Don't accept any inferior coat when you can have the "Fish Brand Slicker" delivered without extra cost. Particulars and illustrated catalogue free.

A. J. TOWER - Boston, Mass.

Children Cry for Pitcher's Castoria.

If You Have

CONSUMPTION | COUGH OR COLD
BRONCHITIS | Throat Affection
SCROFULA | Wasting of Flesh
Or any Disease where the Throat and Lungs are Inflamed, Lack of Strength or Nervous Power, you can be relieved and Cured by

SCOTT'S EMULSION

OF PURE COD LIVER OIL
With Hypophosphites.
PALATABLE AS MILK.

Ask for Scott's Emulsion, and let no explanation or solicitation induce you to accept a substitute.
Sold by all Druggists.
SCOTT & BOWNE, Chemists, N. Y.