

L. L. JOHNSON, M. D.

M. A. SPALDING.

METROPOLITAN DRUG STORE.

Everything (Except Liquor) Usually Kept in a First-Class Drug Store.

WE ALSO HANDLE

PIANOS AND ORGANS. SEWING MACHINES.

JOHNSON & SPALDING, McCOOK - NEBRASKA.

LUDWICK & TROWBRIDGE,

HAVE JUST OPENED UP A NEW LINE OF

FURNITURE!

Stoves & Tinware, Japanned & Iron Ware.

We Have a Tin Shop in Connection, and will do General Job Work in

Tin, Sheet Iron & Copper Ware.

We Manufacture Ludwick's Patent Reflecting Lamp, For Both Wholesale and Retail. Call and Examine Our Stock. We Will Sell You Good Goods for the Cash.

West Dennison Street, - McCOOK, NEB.

FREES & HOCKNELL,

PROPRIETORS OF THE

CHICAGO LUMBER YARD.

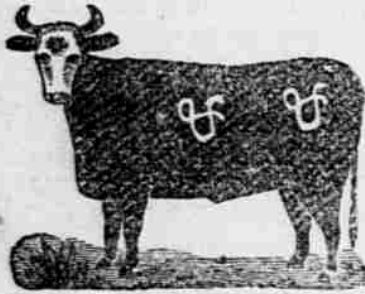
DEALERS IN

Lumber, Lime, Cement, Sash, Doors, Blinds, HARD AND SOFT COAL.

YARDS AT McCOOK, INDIANOLA, CAMBRIDGE, ARAPAHOE, AND OXFORD.

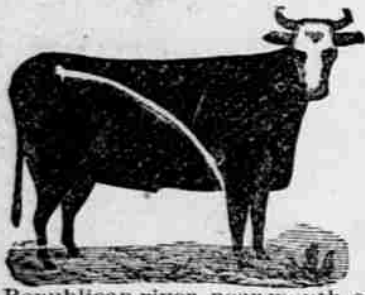
STOCK DIRECTORY.

JOSEPH ALLEN.



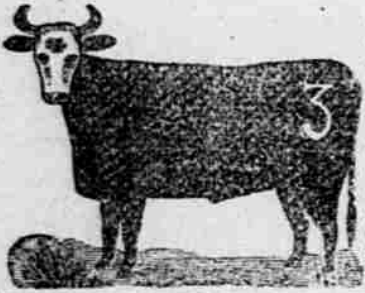
Ranch on Red Willow creek, one-half mile above Osborn postoffice. Cattle branded on right side and hip as above.

JOHN F. BLACK.



FOR SALE—Improved Deeded Farm & Hay Land, Timber and water. Two farm houses, with other improvements. Convenient to No. 1 school privileges. Situated on Republican river, near mouth of Red Willow creek. Call on J. F. Black, on premises, or address him at Indianola, Nebraska.

EATON BROS. & CO.



Cattle branded on left hip. Also, 2, 3, 4 and 5 brands on left hip. Horses branded the same on left shoulder. Range, south of McCook, P. O. address, McCook, Neb.

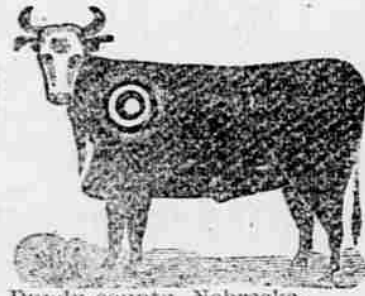
PAXTON CATTLE CO.



J. B. MISSEVY, General Manager. Ranch: A Spring on the Frenchman River, Chase county, Neb. Stock branded as above; also 7 on left side; 7 on the right hip and 8 on the left shoulder and X on left jaw. Half under-crop left ear, and square-crop right ear. P. O. address, McCook, Neb.

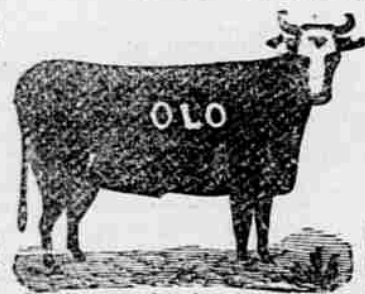
A PRIZE. Send six cents for postage, and receive free, a costly box of goods which will help you to more money right away than anything else in this world. All of either sex, succeed from first hour. The broad road to fortune opens before the workers, absolutely sure. At once address TRUE & CO., Augusta, Maine. 3-29.

New U. S. Cattle Ranch Co., Limited.



Dundy equity, Nebraska.

HENRY T. CHURCH.



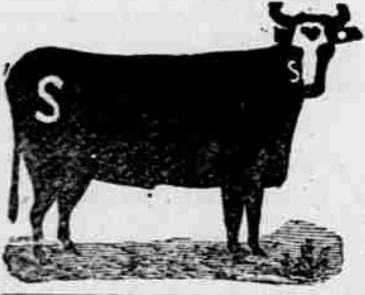
Osborn, Neb. Range: Red Willow creek, in S. W. corner of Frontier county. Cattle branded "O L C" on right side. Also, an over-crop on right ear and under-crop on left. Horses branded "O" on right shoulder.

SPRING CREEK CATTLE CO.



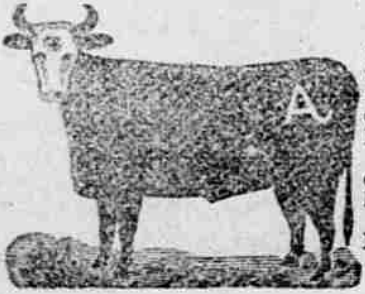
J. D. WELBORN, Vice President and Supt. P. O. address, Indianola, Nebraska. Range: Republican Valley, east of Dry Creek, and near head of Spring Creek, in Chase county, Nebraska.

STOKES & TROTH.



P. O. address, Carrieco, Hayes county, Nebraska. Range: Red Willow creek above Carrieco. Stock branded as above. Also run the lazy S brand.

GEORGE J. FREDERICK.



Ranch: Four miles south-west of McCook, on the Driftwood. Stock branded "A" on the left hip. P. O. address, McCook, Neb.

GRAND SLAUGHTER

AT THE

"PIONEER STORE!"

We have on hand an Immense and Elegant line of Woolen Goods, Cloaks, Clothing and Overcoats that we will close out at their

ACTUAL COST!

To make room for our Spring Stock.

GENT'S - AND - YOUTH'S

CLOTHING!

A Large Stock at Astonishingly Low Prices.

LADIES' * AND * MISSES'

LADIES' - CLOAKS - MISSES'

In this department we have an unusually large and fine selection, and we will sell them at bed-rock prices.

Drop in and examine these CLOAKS and get a handsome garment very cheap.

OVERCOATS!

WE ARE SELLING OUR HANDSOME

MENS' & BOYS' OVERCOATS

At such low figures that everybody should take advantage of the fact. Call in and see them, and our goods and prices will surely induce you to buy.

IN THE LINE OF

BOOTS AND SHOES

We have the Largest and Most Complete assortment ever opened out in McCook.

GROCERIES.

- 13 pounds of Granulated Sugar.....\$1.00
- 14 pounds of extra "C" Sugar.....\$1.00
- 20 bars of White Russian Soap.....\$1.00
- 6 pounds of Arbuckle Coffee.....\$1.00
- 16 yards of Good Muslin.....\$1.00
- 20 yards of Prints.....\$1.00

Perfection Flour \$2 per cwt.

Highest Market Price paid for Produce.

HAYDEN & CO.,

CHAS. NOBLE, Manager.

F. L. McCRACKEN, RELIABLE WATCHMAKER & JEWELER.

JEWELRY.



SILVERWARE.

Watches, Clocks & Jewelry.

I have a complete stock of everything carried by a First-class Exclusive Jewelry Store.

MANUFACTURING DEPARTMENT.

I am now prepared to make RINGS, BANGLES, PINS, BADGES, and any kind of Emblem Pin, on short notice. I use nothing but 14k. gold.

F. L. McCRACKEN, McCook, Neb.

B. & M. PHARMACY.

HAVE IN STOCK A LINE OF

FINE TOILET ARTICLES,

Combs, Brushes, Perfumery, Extracts, Etc.

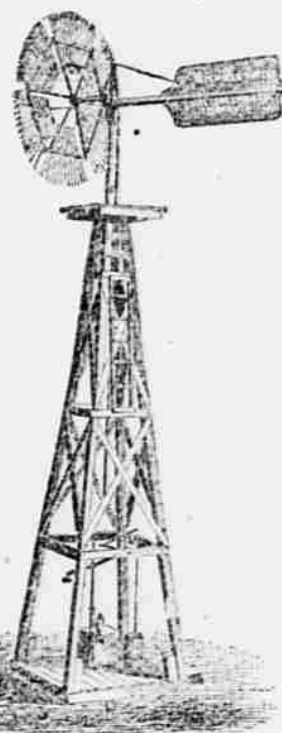
WINES AND LIQUORS

Will be sold only in cases of sickness, and then only on Physician's Prescription.

Prescriptions Carefully Compounded, Day or Night.

Doctor's Choice, America's Finest Five Cent Cigar.

McCOOK, - NEBRASKA.



Challenge Wind Mill.

Superior to any on the market, being Heavier, Stronger Built, and therefore a more Durable Mill. It is the only absolutely safe Mill built; and out of

Thousands Erected During 12

Years past, not one has ever blown away and left the Tower standing. A record no other Mill can show. We offer to put up any of our PUMPING MILLS

ON THIRTY DAYS TRIAL,

And if they don't give satisfaction, will remove Mill at our own expense. Also Manufacturers of the Celebrated Challenge Feed Mills, Corn Shellers, Iron Pumps with brass cylinders, Iron Pipe, Tanks.

For estimates, catalogues and prices, apply to

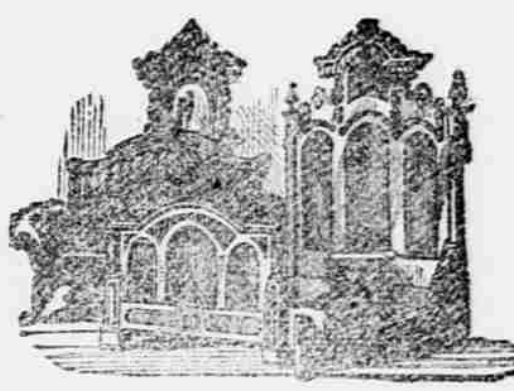
G. B. NETTLETON, McCook, Neb.

Agent for Southwestern Nebraska and Northwestern Kansas

BERGER'S

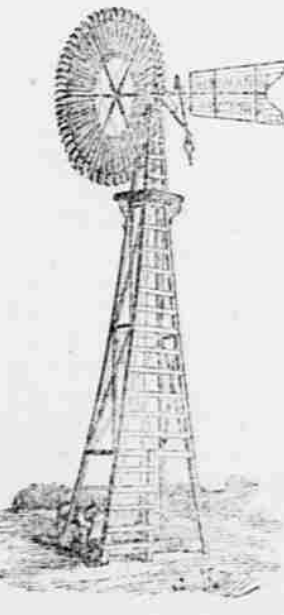
Great Western Furniture Emporium.

Bed Steads, Sofas, Chairs, Looking Glasses, Bureaus, Wash-Stands, Carpets, Burial Cases, Coffins, And Coffin Trimmings, Etc.



WESTERN COTTAGE ORGAN AND THE DIAMOND SEWING MACHINE.

J. E. BERGER, Proprietor, - McCOOK, NEB



CHEAPEST AND BEST

UNEQUALED FOR

Power, Simplicity, Durability.

Estimates made of Mill and Pump complete upon application.

Every Mill Warranted. Send for Catalogue.

THE WOODMANSE.

This mill is a "solid wheel" and the best self-regulator made. The Woodmanse No. 6, Pump is the best single netting force pump in the market. Will work in wells from 10 to 200 feet in depth, and has back attachments to force water into elevated tanks. Can be used by hand or windmill. Parties contemplating the erection of a Windmill will consult their best interests by calling at my Homestead, 1/2 mile northwest of McCook, or at St. Johnson's, 1/2 miles southeast, and examine the workings of the woodmanse.

W. M. IRWIN, Agent, Woodmanse Windmill Co., Freeport, Ill.