

Hayden & McCartneys

Wholesale and Retail Dealers in

GENERAL MERCHANDISE,

Dry Goods, Boots and Shoes, Clothing,
Hats and Caps.

Fancy and Staple Groceries.

Hams, Bacon, Lard, Flour, Corn Meal.

Fine Tobacco and Cigars.

McCook and Indianola, Nebraska.

NEW GROCERY STORE

To The Public!

I have just opened out a complete line of

Staple and Fancy Groceries

Choice Segars and Confectioneries

IN THE

P. O. BUILDING!

I respectfully invite the public to call and give
me a trial. I will not be undersold.

McCook, Nebraska.

20.

J. P. ISRAEL.

Arapahoe STAR MILLS FLOUR.

This Flour is Warranted to be

The Finest in the Market.

Hayden & McCartneys Agents

McCOOK and INDIANOLA, NEBRASKA.

HOW WE BUILD A NEW CITY IN THE

FAR WEST AND

OFFER RARE CHANCES

FOR THE

ARTISAN, TRADESMAN & SPECULATOR.

THE TOWN OF M'COOK

In Red Willow County, Nebraska, has been surveyed, and lots in the market, for just one year and has now a population of 1000 people. This point has been designated by the C., B. & Q. as the DIVISION STATION between the MISSOURI RIVER & DENVER, where the principal shops, a 15 stall round house and other R. R. facilities have been located on the Denver Line. A complete system of water works costing \$25,000 is just being completed giving all the facilities for comfort possessed of old cities. Lots will range in price from \$150 to \$500 for business lots, and \$50 to \$200 for residence lots. The history of points like McCook show an increase of more than three hundred per cent. in from one to five years, and this town promises to be an exceptional chance for investments. For further particulars apply to R. O. PHILLIPS, Or W. F. WALLACE, Secretary, Lincoln, Neb. McCook, Nebraska.

THE B. & M. PHARMACY.

—A COMPLETE LINE OF—

Toilet Articles.

Wines and Liquors Will be Sold Only in Cases of Sickness,
and then Only on Physician's Prescription.

PRESCRIPTIONS CAREFULLY COMPOUNDED,
EITHER DAY OR NIGHT.

Tansill's Punch, America's Finest 5c. Cigar.

WILLEY & CO., McCOOK, NEB.

GITIZENS' BANK OF McGOOK

—DOES A GENERAL—

BANKING BUSINESS

Collections made on all accessible points. Drafts drawn directly
on the principal cities of Europe. Taxes paid for Non-Residents.
Money to loan on Farming Lands, Village and personal
property. Fire Insurance a specialty.

Tickets for Sale to and from Europe.

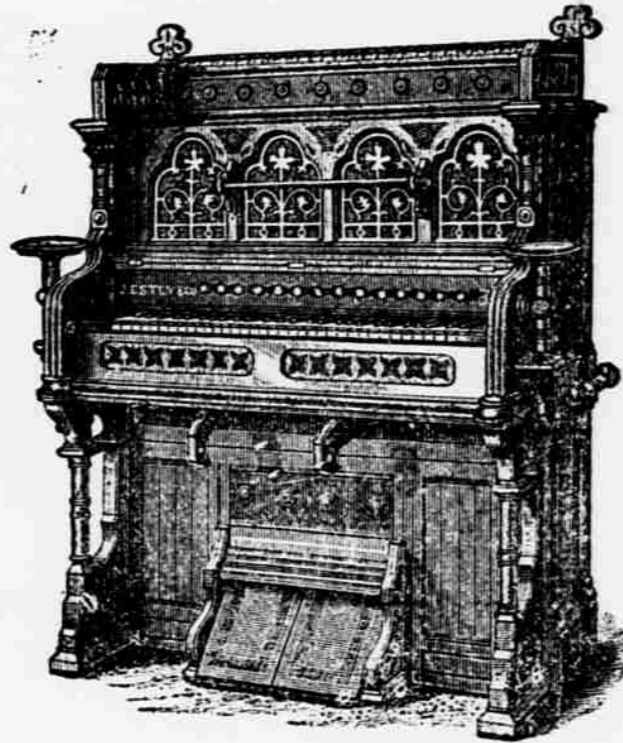
CORRESPONDENTS:
First National Bank, Lincoln, Neb.
Chase National Bank, New York.

OFFICERS:
J. W. DOLAN, President.
V. FRANKLIN, Vice President.
W. F. WALLACE, Cashier.

M. A. SPALDING,

AGENT FOR THE

ESTLEY
ORGANS.



STORY
& CAMP

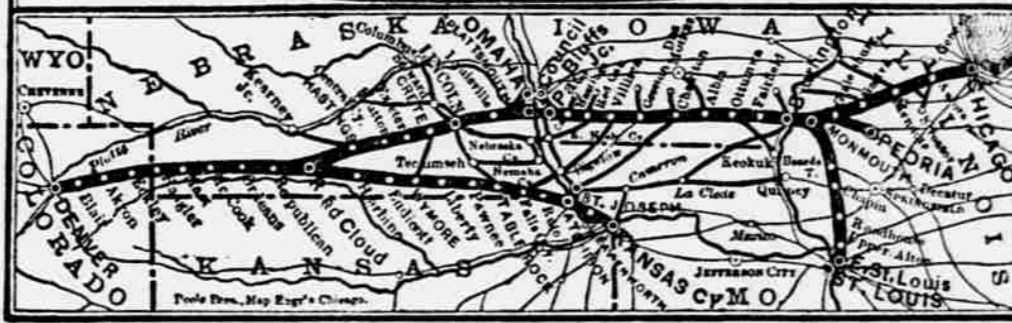
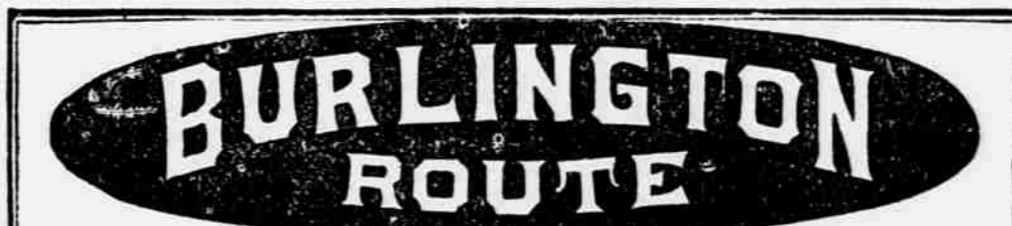
Sold low for cash, or on easy payments, or rented until
the rent pays for the organ.

Catalogue With Price-List and Full Description Free.

M. A. SPALDING, Agent.

McCOOK,

NEBRASKA.



EASTWARD.

Daily express trains for Omaha, Chicago, Kansas
City, St. Louis, and all points east. Through cars
via Peoria to Indianapolis. Elegant Pullman Palace
cars and day coaches on all through trains, and dining
cars east of Missouri River.

WESTWARD.

Daily express trains for Denver, connecting in Union
Depot for all points in Colorado, Utah, California and
the entire West. The advent of this line gives the
traveler a New Route to the West, with scenery and
advantages unequalled elsewhere.

Through Tickets at lowest rates are on sale at all the important stations, and baggage will be checked
to destination. Any information as to rates, routes or time tables will be cheerfully furnished upon ap-
plication to any agent, or to P. S. Evers, General Ticket Agent, Omaha, Neb.

BERGER'S

Great Western Furniture Emporium.

Bed Steads, Sofas, Chairs,
Looking Glasses,
Bureaus, What-Nots, Carpet,
Burial Cases, Coffins
And Coffin Trimmings, Etc.



DIAMOND SEWING
MACHINES,
AND THE
VICTOR, HOUSEHOLD,
AGENT FOR THE

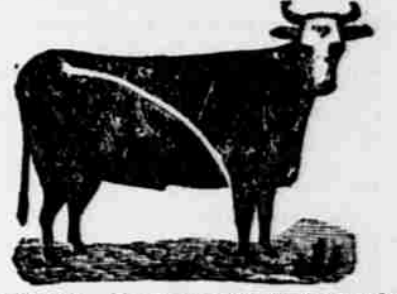
J. E. BERGER, Proprietor,

McCOOK, NEB.



C. D. PHELPS.

Range: Republican Valley 4 miles west of
Culbertson, south side of Republican. Stock
branded "161" and "7-L." P. O. Address,
Culbertson, Neb. 22-11.



FOR SALE.—My range of 1000 acres of deeded
land in one body, including the black and byfield bay
lands; timber and water with two good farm houses
and other improvements. Convenient to No. one
school privileges. Situated in the Republican valley
west of Red Willow creek. Call on or address,
J. F. BLACK, Red Willow, Neb.



HENRY T. CHURCH.

Osborn, Neb. Range: Red Willow creek in
southwest corner of Frontier Co., cattle brand-
ed "O L O" on right side. Also, an over crop on
right ear and under crop on left. Horses brand-
ed "8" on right shoulder. 2-11.



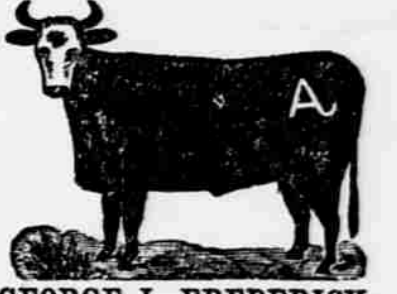
W. J. WILSON.

Stock brand—circle on left shoulder; also dewlap
and a crop and under half crop on left ear, and a crop
and under bit in the right. Ranch on the Republican
Postoffice, Max, Dundy county, Nebraska. 4-13



John Hatfield & Son

McCook, Neb., Ranch 4 miles south-east, on
Republican river. Stock branded with a bar
— and layz z on left hip. 2-5



GEORGE J. FREDERICK.

Ranch, 4 miles southwest of McCook, on the
Driftwood. Stock branded "47" on the left
hip. P. O. address, McCook, Neb. 22-11.



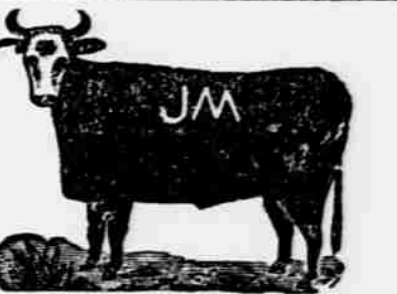
W. N. PROCTOR.

McCook, Neb., range: Red Willow creek in
southwest corner of Frontier county. Also, E
P brand on right hip and side and swallow-fork
in right ear. Horses branded E P on right hip.
A few branded "A" on right hip. 4



The Turnip Brand.

Ranch 2 miles north of McCook. Stock brand-
ed on left hip, and a few double cross on left side
E-z-y. C. D. EICANBLACK.



DENNIS McKILLIP.

Ranch on Red Willow, Thornburg, Hayes County,
Neb. Cattle branded "J. M." on left side. Young
cattle branded same as above, also "J." on left jaw.
Under slope right ear. Horses branded "E." on left
shoulder. 3-11

ESTABLISHED 1862
EDSON BROS.
Patent Lawyers.
WASHINGTON, D. C.
Specialty:—Patent causes before the Patent Office
and the Courts. Reasonable terms. Opinion as to
patentability, free of charge. Send for circular.