

# Hayden & McCartneys

Wholesale and Retail Dealers in

## GENERAL MERCHANDISE,

Dry Goods, Boots and Shoes, Clothing,  
Hats and Caps.

## Fancy and Staple Groceries.

Hams, Bacon, Lard, Flour, Corn Meal.

## Fine Tobacco and Cigars.

McCook and Indianola, Nebraska.

## NEW GROCERY STORE

### To The Public!

I have just opened out a complete line of

## Staple and Fancy Groceries

Choice Segars and Confectioneries

IN THE

## P. O. BUILDING!

I respectfully invite the public to call and give  
me a trial. I will not be undersold.

McCook, Nebraska.

20.

J. P. ISRAEL.

## Arapahoe STAR MILLS FLOUR.

This Flour is Warranted to be

## The Finest in the Market.

## Hayden & McCartneys, Agents

McCOOK and INDIANOLA, NEBRASKA.

## HOW WE BUILD A NEW CITY IN THE

FAR WEST AND

## OFFER RARE CHANCES

FOR THE

## ARTISAN, TRADESMAN & SPECULATOR.

### THE TOWN OF M'COOK

In Red Willow County, Nebraska, has been surveyed, and lots in the market, for just one year and has now a population of 1000 people. This point has been designated by the C., B. & Q. as the DIVISION STATION between the MISSOURI RIVER & DENVER, where the principal shops, a 15 stall round house and other R. R. facilities have been located on the Denver Line. A complete system of water works costing \$25,000 is just being completed giving all the facilities for comfort possessed of old cities. Lots will range in price from \$150 to \$500 for business lots, and \$50 to \$200 for residence lots. The history of points like McCook show an increase of more than three hundred per cent. in from one to five years, and this town promises to be an exceptional chance for investments. For further particulars apply to R. O. PHILLIPS, Or W. F. WALLACE, Secretary, Lincoln, Neb. McCook, Nebraska.

## THE B. & M. PHARMACY.

—A COMPLETE LINE OF—

## Toilet Articles.

Wines and Liquors Will be Sold Only in Cases of Sickness,  
and then Only on Physician's Prescription.

PRESCRIPTIONS CAREFULLY COMPOUNDED,  
EITHER DAY OR NIGHT.

Tansill's Punch, America's Finest 5c. Cigar.

WILLEY & CO., McCOOK, NEB.

## CITIZENS' BANK OF McCOOK

—DOES A GENERAL—

## BANKING BUSINESS

Collections made on all accessible points. Drafts drawn directly  
on the principal cities of Europe. Taxes paid for Non-Residents.  
Money to loan on Farming Lands, Village and personal  
property. Fire Insurance a specialty.

Tickets for Sale to and from Europe.

CORRESPONDENTS:

First National Bank, Lincoln, Neb.  
Chase National Bank, New York.

OFFICERS:

J. W. DOLAN, President.  
V. FRANKLIN, Vice President.  
W. F. WALLACE, Cashier.

## FREES & HOCKNELL,

—PROPRIETORS OF THE—

## CHICAGO LUMBER YARD.

DEALERS IN

LUMBER, LIME, CEMENT, SASH, DOORS, BLINDS & COAL.

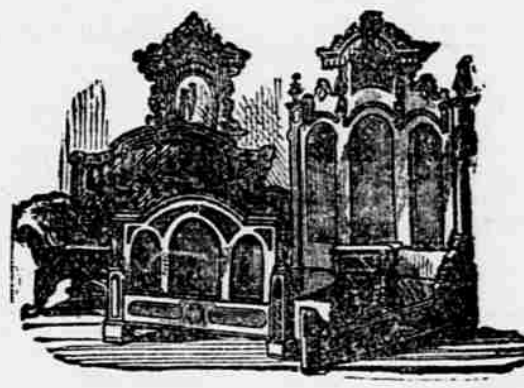
YARDS AT:

McCook, Indianola, Cambridge, Arapahoe, and Oxford.

## BERGER'S

## Great Western Furniture Emporium.

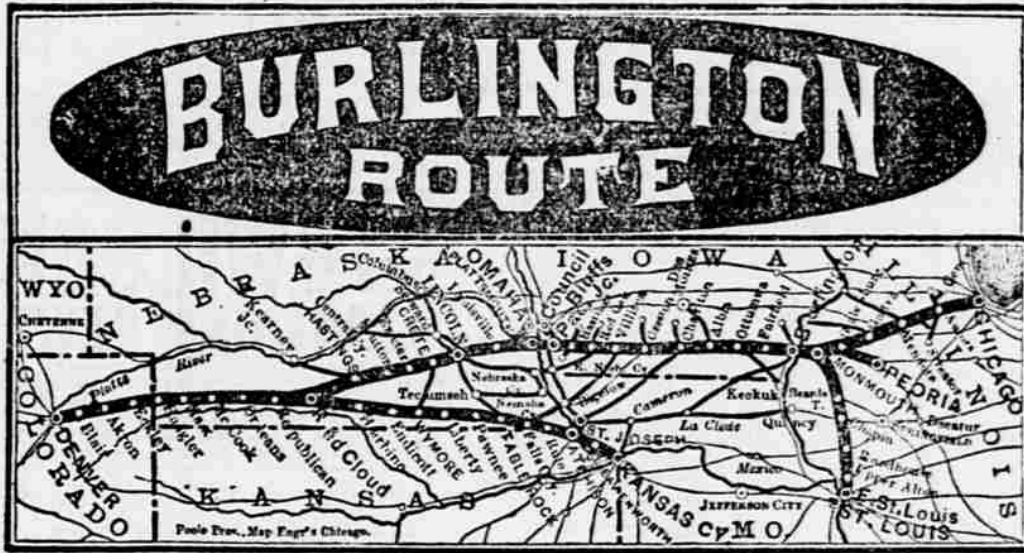
Bed Steads, Sofas, Chairs,  
Looking Glasses,  
Bureaus, What-Nots, Carpet,  
Burial Cases, Coffins  
And Coffin Trimmings, Etc.



AGENT FOR THE  
VICTOR, HORNSELD,  
AND THE  
DIAMOND SEWING  
MACHINES.

J. E. BERGER, Proprietor,

McCOOK, NEB.



EASTWARD.

Daily express trains for Omaha, Chicago, Kansas  
City, St. Louis, and all points east. Through cars  
via Forts to Indianapolis. Elegant Pullman Palace  
cars and day coaches on all through trains, and dining  
cars east of Missouri River.

Through Tickets at lowest rates are on sale at all  
the important stations, and baggage will be checked  
or time tables will be cheerfully furnished upon ap-  
plication to any agent, or to

WESTWARD.

Daily express trains for Denver, connecting in Union  
Depot for all points in Colorado, Utah, California and  
the entire West. The advent of this line gives the  
traveler a New Route to the West, with scenery and  
advantages unequalled elsewhere.

Important stations, and baggage will be checked  
or time tables will be cheerfully furnished upon ap-  
plication to any agent, or to

\$100.00 A WEEK!

We can guarantee the above amount to  
nood, active, energetic

## Agents!

Ladies as well as gentlemen, make a success  
in the business. Very little capital required.  
We have a household article as salable as flour.

## IT SELLS ITSELF

It is used every day in every family. You do  
not need to explain its merits. There is a rich  
harvest for all who embrace this golden oppor-  
tunity. It costs you only one cent to learn  
what your business is. Buy a postal card and  
write us, and we will send you our prospectus  
and full particulars

FREE! FREE!

And we know you will derive more good than  
you have any idea of. Our reputation as a  
manufacturing company is such that we can  
not afford to deceive. Write to us on a postal  
card and give your address plainly and receive full  
particulars.

BUCKEYE M'FG CO.,  
16-1yr. Marion, Ohio.

## WILLARD'S HOTEL,

WASHINGTON, D. C.

The popular palace hotel of the National Capital.  
Conveniently located and accessible to all the street  
car lines of the city. Open all the year.

O. G. STAPLES, Proprietor.

25-1mo. Late of the Thousand Island House.



J. B. MESERVE.

Ranch, Spring Canyon on the Frenchman River in  
Chase county, Neb. Stock branded as above; also  
"717" on left side; "O. L." on left hip; "7" on  
right hip and "L" on right shoulder; "L" on left  
shoulder and "T" on left jaw. Half under-crop left  
ear, and square crop right ear.



C. D. PHELPS.

Range: Republican Valley 4 miles west of  
Culbertson, south side of Republican. Stock  
branded "181" and "7-L." P. O. Address,  
Culbertson, Neb. 22-11.



HENRY T. CHURCH.

FOR SALE.—My range of 1000 acres of doeded  
land in one body, including the Black and Byfield hay  
lands; timber and water with two good farm houses  
and other improvements. Convenient to No. one  
school privileges. Situated in the Republican valley  
west of Red Willow creek. Call on or address,  
J. F. BLACK, Red Willow, Neb.



W. J. WILSON.

Osborn, Neb. Range: Red Willow creek in  
southwest corner of Frontier Co., cattle brand-  
ed "O. L. A." on right side. Also, an over crop on  
right ear and under crop on left. Horses brand-  
ed "8" on right shoulder. 2-4yl.



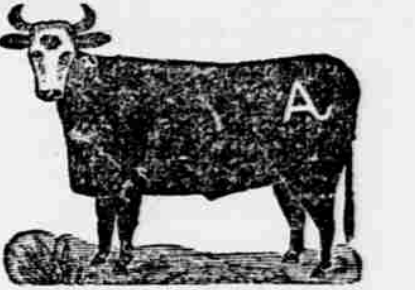
JOHN HATFIELD & SON

McCook, Neb., Ranch 4 miles south-east, on  
Republican river. Stock branded with a bar  
and under bit in the right. Ranch on the Republican.  
Postoffice, Max, Dundy county, Nebraska. 4-ly



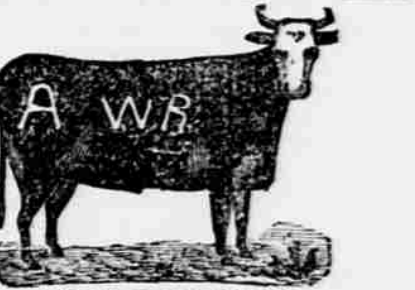
GEORGE J. FREDERICK.

Ranch, 4 miles southeast of McCook, on the  
Driftwood. Stock branded "A" on the left  
hip. P. O. address, McCook, Neb. 22-11.



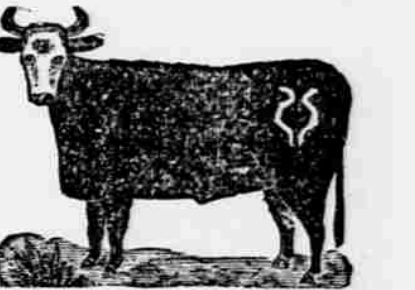
W. N. PROCTOR.

McCook, Neb., range: Red Willow creek in  
southwest corner of Frontier county. Also, E  
brand on right hip and side and swallow-fork  
in right ear. Horses branded "E" on right hip.  
A few branded "A" on right hip. 4



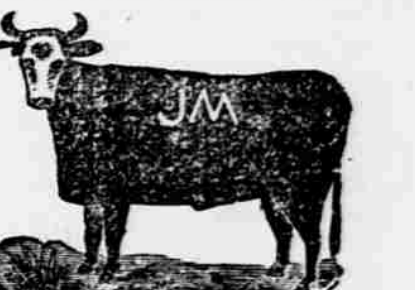
THE TURNIP BRAND.

Ranch 2 miles north of McCook. Stock brand-  
ed on left hip, and a few double cross on left side  
22-ly.



DENNIS MCKILLIP.

Ranch on Red Willow, Thornburg, Hayes County,  
Neb. Cattle branded "J. M." on left side. Young  
cattle branded same as above, also "J." on left jaw.  
Under-slope right ear. Horses branded "2." on left  
shoulder. 3-14.



EDSON BROS.

Ranch on Red Willow, Thornburg, Hayes County,  
Neb. Cattle branded "J. M." on left side. Young  
cattle branded same as above, also "J." on left jaw.  
Under-slope right ear. Horses branded "2." on left  
shoulder. 3-14.

ESTABLISHED 1838  
**EDSON BROS.**  
**Patent Lawyers.**  
WASHINGTON, D. C.  
Specialty:—Patent causes before the Patent Office  
and the Courts. Reasonable terms. Opinion as to  
patentability, free of charge. Send for circular.