

CITIZENS' BANK OF McCOOK

—DOES A GENERAL—

BANKING BUSINESS

Collections made on all accessible points. Drafts drawn directly on the principal cities of Europe. Taxes paid for Non-Residents. Money to loan on Farming Lands, Village and personal property. Fire Insurance a specialty.

Tickets for Sale to and from Europe.

CORRESPONDENTS:
First National Bank, Lincoln, Neb.
Chase National Bank, New York.

OFFICERS:
J. W. DOLAN, President.
V. FRANKLIN, Vice President.
W. F. WALLACE, Cashier.

FREES & HOCKNELL,

—PROPRIETORS OF THE—

CHICAGO LUMBER YARD.

DEALERS IN

LUMBER, LIME, CEMENT, SASH, DOORS, BLINDS & COAL.

YARDS AT:

McCook, Indianola, Cambridge, Arapahoe, and Oxford.

THE B. & M. PHARMACY.

A COMPLETE LINE OF

Toilet Articles.

Pure Wines and Liquors Strictly for Medicinal Purposes.

PRESCRIPTIONS CAREFULLY COMPOUNDED, EITHER, DAY OR NIGHT.

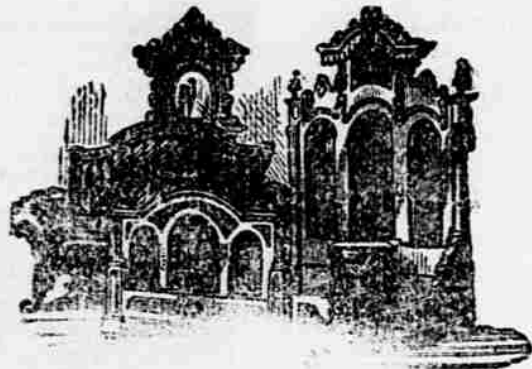
Tansill's Punch, America's Finest 5c. Cigar.

WILLEY & CO., McCOOK, NEB.

BERGER'S

Great Western Furniture Emporium.

Best Stools, Sofas, Chairs,
Looking Glasses,
Bureaus, What-Nots, Carpet,
Burial Cases, Coffins
And Coffin Trimmings, Etc.



AGENT FOR THE
VICTOR HOUSEHOLD
AND THE
DIAMOND SEWING
MACHINES.

J. E. BERGER, Proprietor,

McCOOK, NEB.

HERE WE ARE!

PREPARED TO DO ALL KINDS OF JOB PRINTING SUCH AS
Letter Heads, Note Heads, Bill Heads, Posters, Dodgers, Notes, Checks and Receipts, Ball and Wedding Stationery, Etc., Etc.

OUR JOB OFFICE IS ENTIRELY NEW

And we are able to do as fine work as Lincoln or Omaha and at prices to suit all.

TRIBUNE JOB OFFICE.



Daily express trains for Omaha Chicago, Kansas. Daily express trains for Denver, connecting in Union City, Mo. Trains and all points East. Through cars, Depot for all points in Colorado, Utah, California and to Texas to Indianapolis. Elegant Pullman Parlor the entire West. The advent of this line gives the one-car and day coaches on all through trains, and traveler a new route to the West, with scenery and advantages unequalled elsewhere. Through tickets at lowest rates are on sale at all the important stations, and baggage will be checked and free of charge. Any information as to rates, routes or times tables will be cheerfully furnished upon application to any agent, or to
P. S. EVANS, General Ticket Agent, Omaha, Neb.

Hayden & McCartney

Wholesale and Retail Dealers in

GENERAL MERCHANDISE.

Dry Goods, Boots and Shoes, Clothing, Hats and Caps.

Fancy and Staple Groceries.

Hams, Bacon, Lard, Flour, Corn Meal.

Fine Tobacco and Cigars.

Next door to Post-Office.

NEW GROCERY STORE

To The Public!

I have just opened out a complete line of

Staple and Fancy Groceries

Choice Segars and Confectioneries

IN THE

P. O. BUILDING!

I respectfully invite the public to call and give me a trial! I will not be undersold.

McCook, Nebraska.

20

J. P. ISRAEL.

Arapahoe STAR MILLS FLOUR.

This Flour is Warranted to be

The Finest in the Market.

HAYDEN & McCARTNEY, Agents,

McCook,

Nebraska.

HOW WE BUILD A NEW CITY IN THE

FAR WEST AND

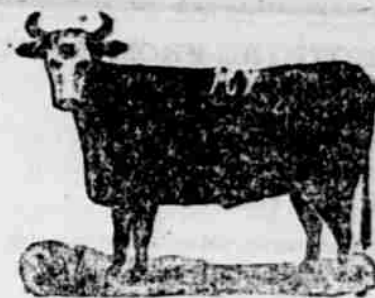
OFFER RARE CHANCES

FOR THE

ARTISAN, TRADESMAN & SPECULATOR.

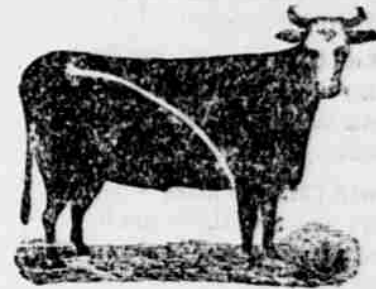
THE TOWN OF M'COOK

In Red Willow County, Nebraska, has been surveyed, and lots in the market for just one year and has now a population of 1000 people. This point has been designated by the C. B. & Q. as the DIVISION STATION between the MISSOURI RIVER & DENVER, where the principal shops, a 15 stall round house and other R. R. facilities have been located on the Denver Line. A complete system of water works costing \$25,000 is just being completed giving all the facilities for comfort possessed of old cities. Lots will range in price from \$150 to \$500 for business lots, and \$50 to \$200 for residence lots. The history of points like McCook show an increase of more than three hundred per cent. in from one to five years, and this town promises to be an exceptional chance for investments. For further particulars apply to R. O. PHILLIPS, Or W. F. WALLACE, Secretary, Lincoln, Neb. McCook, Nebraska.



C. D. PHELPS.

Range, Republican valley 4 miles west of Culbertson, south side Republican river. Stock branded 161 and 711. P. O. Address, Culbertson Neb.



FOR SALE.—My range of 1000 acres of deeded land in one body, including the black and Eyfield bar lands; timber and water with two good farm houses and other improvements. Convenient to No. one school privileges. Situated in the Republican valley west of Red Willow creek. Call on or address, J. F. BLANK, Red Willow, Neb.



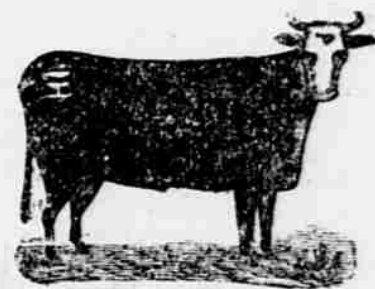
HENRY T. CHURCH.

Oshorn, Neb. Range: Red Willow creek in southwest corner of Frontier county, cattle branded "O L O" on right side. Also, an over crop on right ear and under crop on left. Horses branded "S" on right shoulder.



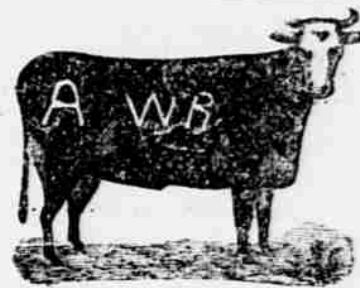
W. J. WILSON.

Stock brand—circle on left shoulder; also dewlap and a crop and under half crop on left ear, and a crop and under bit in the right. Ranch on the Republican Postoffice, Max. Dundy county, Nebraska.



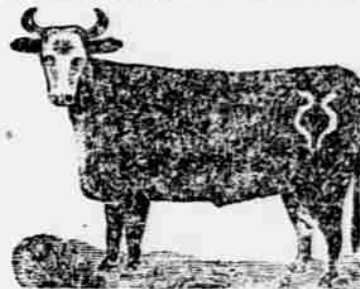
John Hatfield & Son

McCook, Neb. Range 4 miles south-east, on Republican river. Stock branded with a bar and lazy 7 on left hip.



W. N. PROCTOR.

McCook, Neb. Range: Red Willow creek in southwest corner of Frontier county. Also, P brand on right hip and side and swallow-fork in right ear. Horses branded E P on right hip. A few branded "A" on right hip.



The Turnip Brand.

Ranch 2 miles north of McCook. Stock branded on left hip, and a few double cross on left side. C. D. ERICSSON.

THE BUYER'S GUIDE, No. 34, Fall and Winter, 1883, gives wholesale prices direct to consumers on everything you use, eat, drink, wear, or have fun with. Tells how to order with exact cost, 216 pages—large ones—3,300 illustrations—a whole picture gallery. Contains information gleaned from the markets of the world. No other price-book in existence contains as much information. Sent free to any address upon receipt of postage (7 cts). Let us hear from you, or visit us when in our city. Near Exposition Buildings. Respectfully,
MONTGOMERY WARD & CO.,
227 & 229 Wabash Avenue, Chicago, Ill.

SUBSCRIBE

FOR

The TRIBUNE

\$2.00 PER YEAR.