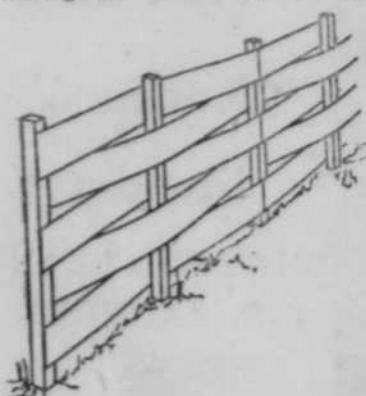


# — READ THE OMAHA GUIDE —

## CLASSIFIED ADS READ THE



**Free Plan for Fence**  
 BY building a basket-weave fence, you at once enhance the appearance of your property, create privacy and create a wind-break which also ventilates. Fast growing in popularity as a material for making such a fence is Masonite Siding, because it comes ready-cut for the most desired widths, and its weatherability is unquestioned. In addition, it's easily-handled and has no splinters. The tempered hardboard siding is woven between wooden posts, four inches square, placed about four feet apart. A free plan showing how to build a woven fence and three other types may be obtained by writing the Home Service Bu-



reau, Suite 2037, 111 West Washington St., Chicago 2, Ill., and requesting No. AE-309. Other styles shown are "The Good Neighbor," "Double Header" and "Hanging Garden."

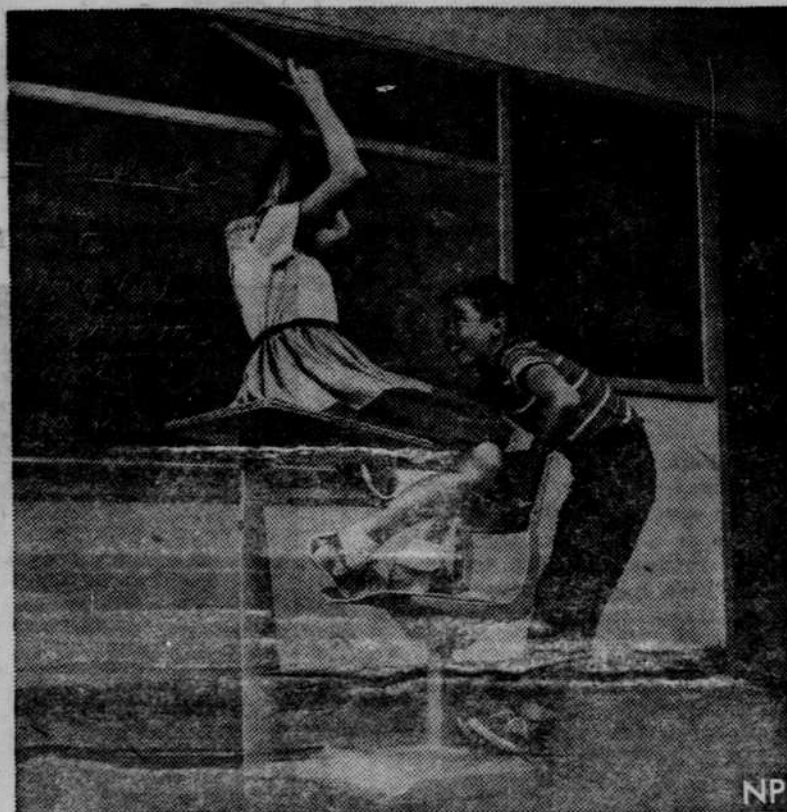
The first three mentioned have been pictured in leading home magazines, and the last mentioned is an innovation combining Masonite "Peg-Board" panels for hanging plants and Masonite Panelegroove for contrast.

**DOLLARS SENT AWAY FOR PRINTING**  
**Never Come Back**  
 Let Us Do Your Printing

## HOW TO FOOL CAR BURGLARS

- BY CAROL LANE  
 WOMEN'S TRAVEL DIRECTOR  
 SHELL OIL COMPANY
1. WHEN YOU PARK YOUR CAR ON THE STREET, CLOSE ALL WINDOWS AND LOCK ALL DOORS. REMEMBER TO TAKE THE KEYS WITH YOU; DON'T LEAVE THEM IN THE CAR.
  2. AVOID PARKING ON DARK, LITTLE-TRAVELED STREETS. A CAR THIEF NEEDS TIME AND SECURITY TO BREAK INTO THE CAR, WIRE THE IGNITION AND GET IT STARTED. ALSO, AVOID PARKING OVERNIGHT ON ANY STREET.
  3. DON'T LEAVE YOUR CAR PARKED A LONG TIME, ANYWHERE, WITHOUT MAKING PERIODIC CHECKS.
  4. DON'T LEAVE VALUABLE ARTICLES, SUCH AS LUGGAGE OR CLOTHING IN PLAIN SIGHT IN YOUR PARKED CAR. THEY TEND TO ATTRACT BURGLARS. LOCK VALUABLES IN THE LUGGAGE COMPARTMENT.
  5. IF YOU BUY A USED CAR, BE SURE THAT TITLE PAPERS CORRESPOND WITH THE DESCRIPTION OF THE CAR.
  6. MAKE A PERMANENT RECORD OF THE MOTOR AND SERIAL NUMBERS OF YOUR CAR. THIS WILL HELP THE AUTHORITIES AND YOUR INSURANCE COMPANY FIND YOUR CAR IN THE EVENT IT'S STOLEN.

## For Modern Toms and Beckys



THE NEW "TOM SAWYER" SCHOOL DESK created by industrial designers Gordon Lippincott and Walter Margulies gets a real durability test. Made for American Seating, it will be tried out this spring by children in several hundred "pilot" schools across the country. The desk is designed especially to suit the needs of modern Toms and Beckys, has a plastic top, swivel seat, adjusts to individual heights and is impervious to bumps, bangs, gouges, digs and scratches.

## THE AMERICAN WAY



The Double-Cross

## THE AMERICAN WAY



A Friendly Gesture Misunderstood

**Don't Let Muddy**  
 When mud gets on your youngsters' or your own shoes, don't let it dry on before brushing it off. Although dry mud comes off more easily than wet, experts advise that mud stains leather, and the longer it stays on, the worse the stain may be.

**Highest Mountain**  
 France has the highest mountain in Europe west of the Caucasus, Mont Blanc, which towers to 15,781 feet.

**Wax Is Dangerous**  
 Don't wax a floor to the point that it becomes a skid hazard, especially if there are old people or children in the family.

**Lime for Gardens**  
 Most vegetable crops do best on soils that are neutral or slightly alkaline. However, do not plant Irish potatoes for at least two years after applying lime because alkaline soils seem to favor the development of potato scab.

**Staying Together**  
 Coming together is a beginning; keeping together is progress; working together is success.  
 —Henry Ford

**Home Dangerous**  
 You may not think of your home as a booby trap—but accident statistics prove that hazards lurk in every nook and cranny of the house.

**Quick Dessert**  
 Broil some canned grapefruit segments with your next broiled dinner for a quick dessert. Use 1/4 cup of the juice from the grapefruit mixed with a dash of nutmeg, cloves and 1/4 cup brown sugar. Dot the grapefruit butter with this as well as the sugar mixture and broil about 6 minutes.

**Organized Dishwashing**  
 Drainers and drainboards underneath them help to keep the dishes organized after washing; it also cuts down on the water which must be wiped from them. Save your hands by using a mop or a soft brush. This may not keep the hands completely out of the water, but it helps.



**Floor Protector**  
 TROUGH on the floor and rug are a baby's rocker, bouncing chair and similar playthings. However, there's an easy way to protect a floor or floor covering. Simply take a panel of Masonite 1/2" Tempered Preswood, available at lumber yards, round



the corners and slightly bevel the edges with a sandblock, sander or file, and you'll have a protecting base for baby's frolics. This panel is wonderful for little children to be around, as it has no splinters and its surface is extremely smooth. Also, it's moisture-resistant and easily kept clean. When the baby's in the high chair, slip the Masonite mat under it, too. Spilled food won't hurt it a bit.

**NOW! END THE MESS OF ICE TRAYS—FOREVER!**

**Servel**  
 AUTOMATIC ICE-MAKER REFRIGERATOR

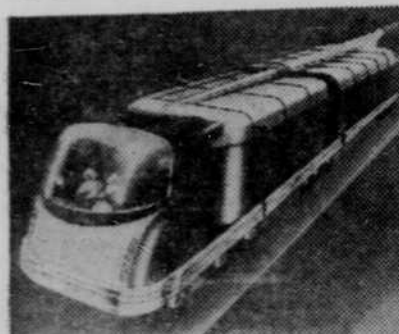
**...and SILENT as a GAS FLAME**

**Metropolitan Utilities District**  
 18th & HAWKEYE 24th & O

**Easy Payments on Your GAS Bill**

## YOUR HIGHWAYS BY JAY SCOTT

Ten years from today... in the year 1966... Roy Fruehauf, President, Fruehauf Trailer Company, has predicted:  
 The nation's motor transport fleet, now 10 million vehicles, will grow to 15 million.  
 America's freight trailer fleet, now 700,000, will be double.  
 Many units in these fleets will be powered by the atom.  
 There'll be more and more plastic trailers.  
 Trucks and trailers will be equipped with every type safety device, including airplane type steering gear and even radar screens.



**Figgybacking**—which just began to grow in 1955—will become the biggest single revenue producer for America's railroads.  
 The railroads will begin replacing the nation's 716,000 box cars with flat cars each carrying two truck trailers.  
 Fishybacking, the carrying of loaded truck trailers on steamships, will grow to great importance. Trucks and trailers will be carrying 99 percent of the mails on runs up to 300 miles.  
 All this traffic will be moving over the most modern of highways. Toll highways will connect Miami and Chicago and New York and San Francisco.  
 There'll be special lanes for trucks and trailers... push button garages... truck streets... moving sidewalks... less congested cities.



BEFORE MAKING A REPORT to the National Council of the Episcopal Church, Dr. James Howard Means (right), Boston physician, discusses the state of Japanese medicine with the Rt. Rev. Henry Knox Sherrill, Presiding Bishop of the Episcopal Church. Dr. Means was sent as the Presiding Bishop's personal representative to survey the Church's medical facilities and services at St. Luke's International Hospital in Tokyo.



ONE SMALL PATIENT receives loving care at St. Luke's International Hospital, Tokyo, Japan. The hospital, one of the largest and most modern in the entire Far East, is run by the Nippon Sei Ko Kai (Holy Catholic Church in Japan). It was started in 1912 by an Episcopal medical missionary, Dr. Rudolph Bolling Teisler of Virginia.

**YOUR HOME MERCHANTS ASK YOU TO "BUY AT HOME"**

**IT'S UP TO YOU!**

It's the job of the Omaha Public Power District to bring you ALL the electricity you need... at all times... at fair prices.

It's the job of the manufacturers of electric appliances to bring you more and better electric servants... at prices you can afford.

**It's your job to see that your home has MODERN WIRING**

Eight out of ten homes—even many new ones—just don't have enough wiring to take care of their electrical needs. Old-fashioned wiring keeps people from adding appliances they badly need and want. In most cases, it prevents them from satisfactorily using even those they already have.

It's easy to bring your home's wiring up to date. Modern wiring is moderate in cost, can be installed without fuss or muss. Often just a little more wiring is all that's needed.

**Have a "power-full" house and live better—electrically.**

**NEBRASKA-IOWA ELECTRICAL COUNCIL**  
 1104 W. O. W. Building HA 2172

# Phone Your News To HA0800