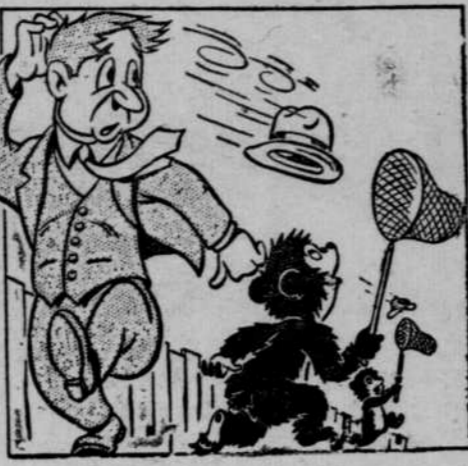


DANDY, HANDY 'N CANDY



By Winsor

Handy Jim's FIXIN-UP TIPS For Farm and Home

Temporary Grain Storage

THE time to prepare extra storage for grain is before the storage is needed. Temporary bins holding up to 800 bushels can be built on the farm of materials that can be used later for other purposes, according to Masonite Corporation.

The illustrations show how several panels of Tempered Presdwood are bent into a huge circle



18' 8" in diameter and bolted together. A floor of shiplap boards, covered with sisalcraft, is laid over joists.

Grain in such a bin is kept dry and clean. The cover is a double thickness of sisalcraft laid over a protecting shoulder of hay or straw. Weights attached to wires keep the cover down. Sides of the bin are durable and moisture-resistant. Tempered Presdwood has proved itself as an all-around farm building material over a period of years.

Easy-to-follow but detailed instructions for putting up a temporary grain bin may be obtained by writing Farm Service Bureau, Suite 2039, 111 West Washington St., Chicago 2, and asking for free plan AFB-177.

LUSTROUS AND LADYLIKE



Dress by Frank Starr

START THE NEW YEAR RIGHT in this lovely gown of lustrous Avicco acetate trimmed with a crisp cowl collar of white organdy. Perfect for party or dress occasions all through spring... you'll find it a welcomed addition to any basic wardrobe.

Clothing Shortage

Why shortages of some clothing? Here's why. A civilian uses about 9 pounds of raw wool a year—a soldier needs 122 pounds. The average civilian's shoes last about a year—a soldier on combat duty can go through a pair in 10 days.



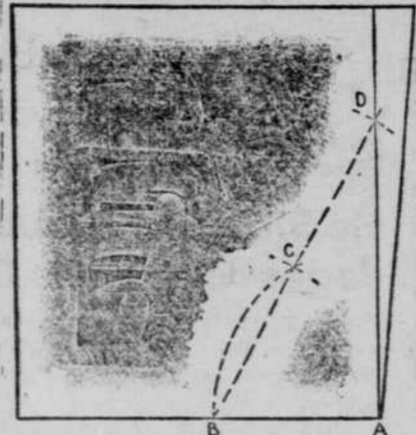
W. C. Handy, the famed "Father of the Blues," introduces a thrilling parade of young entertainers in "New Faces," one in a series of new Negro America documentary films.

Second Smallest Delaware is the second smallest state in the Union.



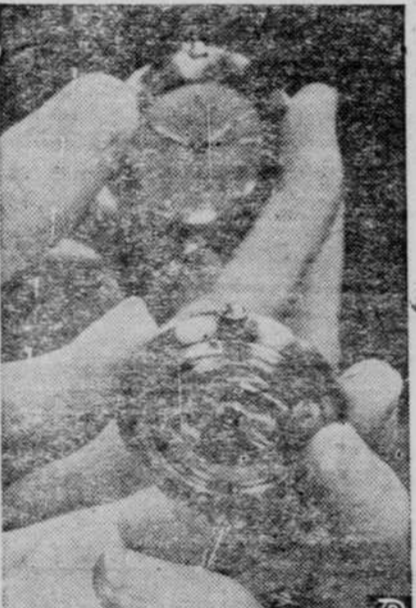
To Square Materials

AS RECOMMENDED by American Builder, a leading trade journal, here's a quick method of squaring large sheets of material when a steel square is inaccurate or impractical. These are the steps to follow:



- 1. Choose a radius that is practical for the job, using "A" as the center. 2. Use the same radius with "B" as a center. 3. Draw a straight line through points "B" and "C." 4. Using same radius and with "C" as center, locate point "D." 5. Lines from "B" to "A" and "D" to "A" form a 90 degree angle.

MIRROR MAGIC



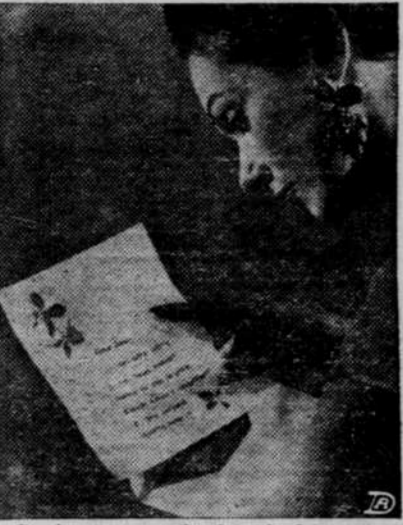
It's new—it's different—it's the rage!

The sleek, self-winding Eternatic pocketwatch (dial view in mirror above), with interesting transparent back (lower center) that reveals the watch's complex, whirling mechanism, is accelerating the popular back-to-the-pocket-watch trend in men's fashions, according to leading style experts.

Whether it's tucked away in a vest, tucked in a jacket pocket, or worn on a chain, this thin, silver-dollar-sized timepiece, with ball-bearing-mounted automatic winder, will wind itself as you walk.

A far cry from the cumbersome "turkey" of yesteryear, this smart, modern pocketwatch for men, acclaimed by horologists as "one of the most brilliant of modern Swiss inventions," is sweeping watches off men's wrists from Paris, France, to Paris, U.S.A.

MESSAGES OF SPRING

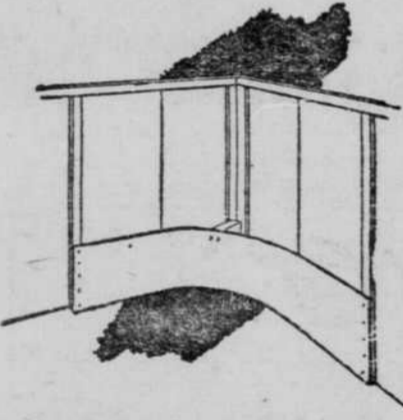


Spring — and the fashion for flowers and fruits is seen everywhere! Your personal stationery, too, captures the fashion theme as aptly as these gay strawberry earrings. Your most intimate correspondence will glow with the quick breath of Spring if you write your letters on Eaton's new Spring papers. The fruit motif is gaily depicted, for example in Eaton's delightful "Strawberry Patch." In Eaton's "Mimosa," the graceful flower, delicately rendered on white envelope linings, shows through paper as sheer and crisp as the new spring organdy.



Round Corners for Hens

EVERY house, including one for chickens, needs its corners. In the case of chickens, though, corners are dangerous. They are dead-end streets to chickens. One bird may reach the corner. Others following it can begin piling up until the original discoverer of the corner has smothered.



Corners just aren't good in a chicken house. Another reason is that they are difficult to clean.

Here's how some farmers have kept their biddies from so foolishly getting into a fatal corner. They've taken a long strip of Masonite 1/2" Tempered Presdwood two feet wide, and curved it around the corners, nailing the ends to the wall studs and the curved center to a 2" x 4" stake jutting out from the corner. This neat trick eliminates the corner.

As long as the Presdwood was "de-fatalizing" the corners, many poultry men have extended the material all the way around the chicken house, so that it serves as a peck-proof strip. Tempered Presdwood is so tough and smooth that chickens can make no impression on it.

NOT ALL THE STEER IS STEAK



Fancy Steaks 30 lbs. - 98c lb. Other Steaks, Fancy Roasts 118 lbs. - 77c lb. Medium Priced Cuts 111 lbs. - 64c lb. Economy Cuts 185 lbs. - 35c lb.

a U. S. Choice 1000 lb. Steer Yields Only 444 lbs. of Retail Cuts

Economics of beef prices are explained to Mrs. Betty Tolson, pretty Omaha housewife, by C. H. Rock, one of the meat specialists for Safeway Stores, who points out savings available to consumers through purchase of economy cuts, averaging 35c lb., instead of fancy steaks, averaging 98c lb. Heavy demand plus small yield — 30 lbs. from a 444 lb. steer carcass — accounts for higher price of fancy steaks. Meanwhile Safeway reports America eating way out of beef crisis, with sharply reduced retail prices and aggressive newspaper advertising accounting for 51% increase in beef sales last year.

Food Sense—Not Nonsense



Let's Have No 11 o'clock Drag!

Breakfast habits of many Americans on-the-go are due for a change—a change back to better breakfasts. Too often, this first meal of the day could no longer qualify as one of the good old-fashioned "three squares a day." People who skip breakfast or eat a skimpy one are apt to drag by 11 o'clock.

These are the people who may say, "I'm not hungry early in the morning." Perhaps they may not be, but are they alert at this time or does it take a good lunch to get them into action? Those who lack an early morning appetite might start the breakfast habit by eating small portions of a balanced breakfast, sleeping up the quantities gradually.

The cost of mid-morning hunger has been checked in an extensive study at the University of Iowa School of Medicine. During late morning hours, college students who ate a good breakfast turned out more work, were quicker in their reactions—both mental and physical—and did not tire as easily as when they either ate no breakfast or had only unweetened coffee.

Scientists say that those who skip over this meal or who eat a slim one, frequently fail to get enough of the needed nutrients in luncheon and dinner. For example, fresh fruits which furnish vitamins for sparkle are not always included in the last two meals of the day.

What is a good breakfast? Authorities say that breakfast should furnish from one-fourth to one-third of the daily food needs. Plenty of fatigue-chasing protein should be included if that let-down feeling is not to appear by mid-morning. A good breakfast can follow a basic pattern—fruit, a main dish such as eggs or a breakfast meat, enriched bread or toast, and milk. All of these foods except fruit are top sources of protein; they feed out a steady supply of energy. Enriched bread supplies not only protein but the essential B-vitamins, riboflavin, niacin and thiamine. Served as French toast, bread can be the basis of a high protein dish which combines eggs, milk and bread.

For the Day After Easter



AFTER EASTER you count on giving the family some of that traditional ham in sandwiches, and salads too. Ever try a good Ham and Sweet Potato casserole? From the Test Kitchens of Minute Maid Fresh-Frozen Juices comes a glamour version of this old favorite. Tangy with the flavor of fresh-frozen orange juice, topped with crunchy peanuts and baked to a delicate golden brown, it's a recipe you will want to keep on file.

DID YOU KNOW — when cooking meat, you always use a low to moderate temperature. High heat toughens it. When using up left-over meat as in a casserole you try to combine it with other foods already cooked. This does away with the risk of over-cooking your meat.

HAM AND SWEET POTATO CASSEROLE

- 6 medium sweet potatoes, cooked 2 cups diced, cooked ham 1 can Minute Maid Fresh-Frozen Orange Juice Water 1/2 cup brown sugar, firmly packed 1/2 cup chopped peanuts 1/4 teaspoon powdered cloves 1 tablespoon butter or margarine

Grease a 1 1/2 quart casserole and place a layer of sliced, cooked sweet potatoes in the bottom. Blend brown sugar and cloves and sprinkle part of mixture over sweet potatoes. Top with layer of diced, cooked ham and repeat until ham and sweet potatoes are used. Place contents of Minute Maid can in measuring cup and add water until it measures 1 cup. Blend and pour over mixture in casserole. Top with chopped peanuts, dot with butter or margarine and bake in moderate oven (350° F) 35 to 40 minutes. Serves 6.

Arthur Jennings Hanson Would Be Commissioner

Arthur Jennings Hanson is running for election as an Omaha City Commissioner.

Mr. Hanson is an active, honest and successful citizen who serves faithfully, tolerantly, effectively and efficiently whenever appointed or elected to any position. His distinguished record is ample proof of his qualifications to do an outstanding job in any spot on the City Council.

Mr. Hanson is General Agent of the State Mutual Life Assurance Company. For over 25 years he has continuously been in life insurance management and at the moment ranks as the senior general agent of his company in all the western half of the United States. This is a strong testimonial to his integrity, competence and wisdom.

Mr. Hanson has served in many capacities. He has a record of serving generously and unselfishly in many important and diversified organizations. Currently he is President of the Small Property Owners Association of Omaha; President of Nebraska Association National Apartment Owners Association, Inc.; Director in American Real Property Federation; Member of Neighborhood Conservation Board and American Legion.

In the past he has been—President of Nebraska Life Agency Managers Association; President of Omaha Association of Life Underwriters, Inc.; Secretary of Noon Day Club of Omaha; Director of Kiwanis Club of Downtown Omaha; National Officer in Tau Kappa Epsilon Fraternity.

Mr. Hanson has been honored and endorsed in so many ways by people who know him well, obviously is qualified to be a good Public Servant. As a member of the City Council, he will definitely be a credit to Omaha. Let's everyone be sure to vote for Arthur Jennings Hanson.

Dale L. Hooker Is Candidat for City Commissioner

Dale L. Hooker was born at Mitchell, South Dakota, April 19, 1896.

The son of Walter and Myrtle Hooker. Mr. Hooker spent most of his youth in South Dakota, and moved with his parents to Macedonia, Ia. when he was 17. He graduated from the Macedonia High School, and completed subsequent course of Business Administration. He served in World War I, until the Armistice was signed. At this time, he was appointed manager of the Quinn Lumber Company of Weston, Iowa, where he remained until he moved to Omaha in 1921. At this time he became interested in the finance business and was appointed supervisor of a national finance corporation and traveled many years in the midwest states. His home and residence however remained in Omaha. He resigned this connection in the finance business in 1946, and entered in to the apartment house business, where he now owns and operates the Claremont and Bonnie Brae Apartments at 4018 and 4020 Izard Street.

Mr. Hooker has belonged to numerous social and civic organizations in Omaha — he is a long time member of the Elks and has been affiliated with the American Legion since 1921 and currently is a member and Director of the "Small Property Owners Association", he is Legislative Chairman of the above Association, which Association has been very active in local and state affairs, re-concentrating on the elimination of Federal Controls — reduced taxation on the local level, etc.

Mr. Hooker is married, wife Zella — has two sons who are married and have families.

Mr. Hooker says that he is very sincere in his effort to become elected to the office of Omaha City Commissioner and is making a supreme effort among his friends to attain this objective. He believes that he can serve the people in a loyal and honest manner. He believes that the foremost problem of all Omaha citizens is strictly tax troubles. The property owner currently is taking the licking of his life, as he is bearing the brunt of our unusually high city taxes.

This was just pointed out by our Governor Crosby, that the Omaha City levy ranks the highest in the state of Nebraska. He will fight to achieve a more cautious and careful spending of the tax dollar, that budgets can be substantially reduced in all departments. Mr. Hooker says we are riding a good horse to death and the horse could fall dead unless relief is forthcoming quickly.

The same procedure should be applied in selecting all other department Heads. In this manner only, will we get experienced men for certain fixed functions of the city.

Taxation as applied in Omaha, is the Power to destroy. It has destroyed the past record of our City Council in approving Large Budgets - Free for all Spending - Approving Mill Levies, as submitted by other taxing bodies, such as, School Board, etc., which are entirely out of line. It must be stopped now and for good.

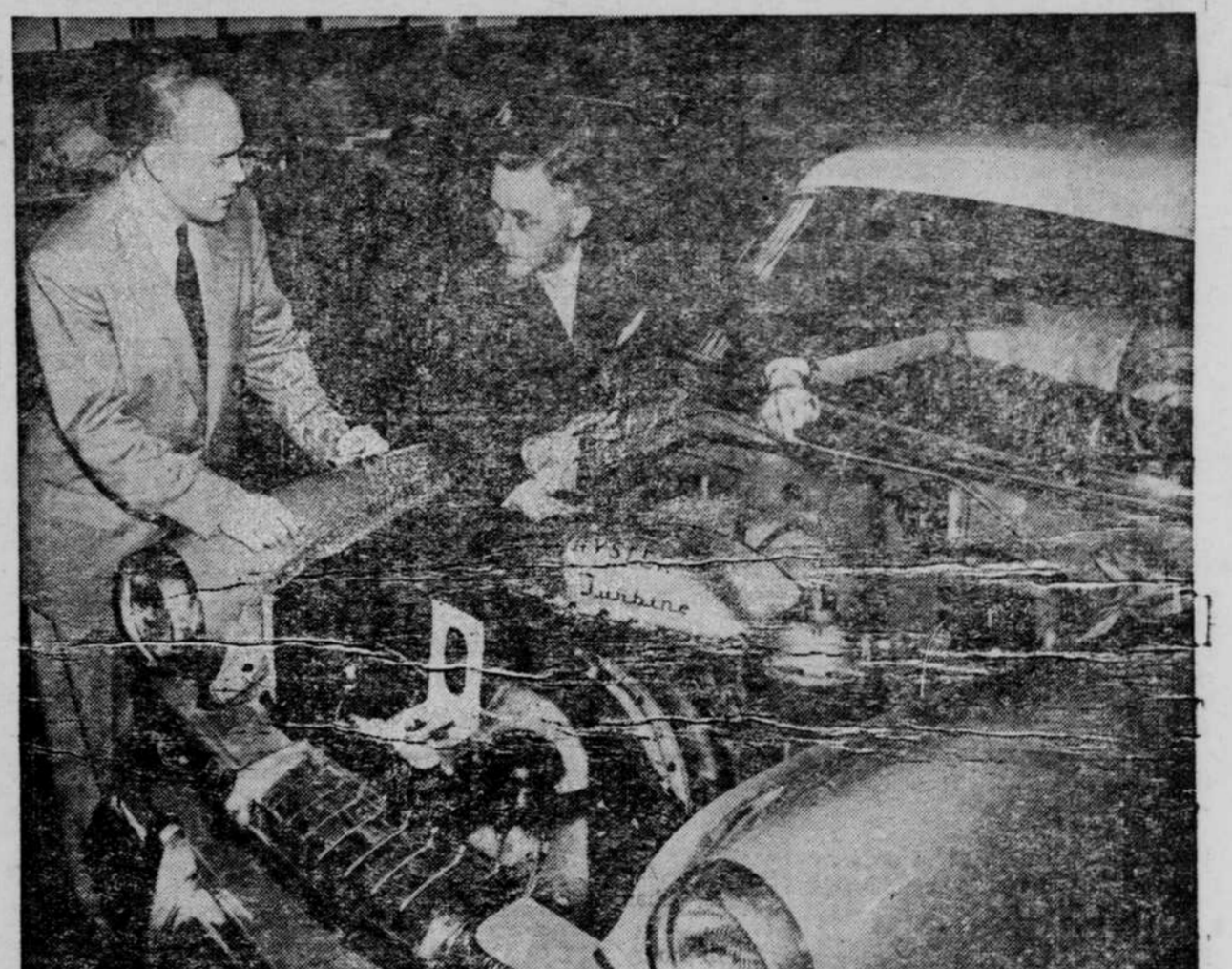
Mr. Hooker is pledged to the "Small Property Owners Association" to see to it that Mill Levies will be substantially reduced in a sane and sensible manner to cope with the increased property values. Mr. Hooker extends this pledge to all other people - Property owners one and all. Mr. Hooker is against Floridation of City Water.

Mr. Hooker believes that the \$10.00 filing fee setup for persons running for City Council, is entirely out of order - that it should be at least \$100.00. This would eliminate many people who file for this office who are insincere and do not make any special effort to become elected but simply file and clutter up the ballot. This would eliminate 50% or better of the 75 to 100 who file every three years as the record has indicated.

Washing Machine Finish The white, porcelainlike finish of the modern washing machine is strictly chemical in nature. It may be a glycerol-phthalate resin or a urea-formaldehyde resin or a combination of the two. In most cases, the finishes are baked at moderate to high temperature.

Lime for Gardens Most vegetable crops do best on soils that are neutral or slightly alkaline. However, do not plant Irish potatoes for at least two years after applying lime because alkaline soils seem to favor the development of potato scab.

CHRYSLER DEVELOPS GAS TURBINE



Something really new in passenger car motive power is Chrysler Corporation's experimental gas turbine engine, now undergoing road tests in a production model Plymouth car at the 4,000-acre Chrysler engineering Proving Grounds, largest in the world, near Chelsea, Michigan. By means of a revolutionary new heat exchanger, or regenerator, Chrysler engineers have designed for the first time an automotive gas turbine that combines outstanding performance characteristics with fuel economy comparable to that of today's piston engines and exhaust temperature cooler than that discharged by the average car. Chrysler emphasized, however, that development of the new gas turbine does not mean that such an engine is ready for general use.

Whether there ultimately will be commercial production of gas turbines for passenger cars depends on the long-range solution of many complex metallurgical and manufacturing problems, and there is no indication now how long it will take to solve these problems. In photo at top, George J. Huebner, Jr., (right) Chrysler Corporation Executive Engineer, points to the experimental Chrysler gas turbine engine, which fits easily into the engine compartment of a Plymouth car. William I. Chapman, turbine project engineer, looks on at left. In lower photo L. L. Colbert, President of Chrysler Corporation, demonstrates how effectively the new Chrysler gas turbine solves the long-standing turbine problem of high temperature exhaust.