

Bread Makes the Pudding!  
(See Recipes Below)

Don't Waste Bread!

Most of us don't think it matters one way or the other whether we throw away a stale slice of bread, but if each family were to save a slice of bread every day, the amount would feed many millions of hungry families who are less fortunate.

Small families, particularly find that the average loaf of bread dries rather quickly, and there are several slices within the week that are regarded as unfit for sandwiches. But there are literally thousands of uses for such bread.

Why not start on a personal campaign of your own just to see how much you can save by using every scrap of bread well? Spread the word to your friends and neighbors, and let's see if we can't really save food, which is the equivalent of putting dollars and cents in your pocketbook?

Here are ways to use those left-over pieces of bread with meats and vegetables. They stretch these other foods as well as make the dish more savory, which will be of interest to the palate as well as the purse.

Tangy Cheese Dish.

Space of Passengers  
A passenger riding on a street car, trolley coach or bus takes up seven times less street space than a private automobile passenger.

Wrestling Revived  
Wrestling appears to have lapsed as a sport between the time of the Sumerians, 3000 B. C., and 1750 B. C., when the Greeks put on a revival of wrestling.

LYNN CHAMBERS' MENUS

- Salmon Salad Potato Chips
- \*Tomato Surprise Watercress Salad
- Bran Muffins Beverage
- Blueberry Cobbler Cream

\*Recipe given.

1 teaspoon garlic salt, if desired  
2 teaspoons celery salt  
4 teaspoons salt  
4 eggs, beaten slightly  
2 cups dry bread crumbs  
8 medium tomatoes  
Combine cream cheese, milk and seasoning. Add salt to slightly beaten eggs. Place dry bread crumbs on pie plate. Slice each tomato crosswise into fourths. Place one tablespoon of the cheese mixture on half of the slices. Top each with the other tomato slices. Place toothpick into middle of each "sandwich" to hold tomato slices together. Roll the tomato slices in the bread crumbs, dip in beaten egg and roll again in bread crumbs. Bake on a well-greased cookie sheet in a hot (400 degree) oven for 20 minutes.

MODERN APPLIANCE

24th-&N SO-OMAHA

*Says its Revolutionary*

because it renews its power over and over



KAY KYSER, professor of the "College of Musical Knowledge" heard each Wednesday over NBC.



Model 250



SELF-CHARGING PORTABLE RADIO

YES—we mean—"self-charging." It renews its battery power over and over again.

Play it all you please—on picnics—on boats—on trains. Never a worry about the trouble and expense of regular battery replacement. When you bring it indoors and plug it in to AC house current, the compact built-in storage battery stores up more power—even while you play it at full volume.

Though small and light it has big-set performance—big-set tone—big-set power and selectivity. It's handsome and it's sturdy with a cast aluminum case, and a scratch resistant finish that you can clean with a damp cloth. Let us demonstrate this revolutionary G-E self-charging portable—tomorrow.

\$99.50

NO OTHER PORTABLE HAS ALL THESE FEATURES

- Rechargeable leak-proof airplane type storage battery with 18 month guarantee.
- Built-in silent charger.
- Renews power by plugging into AC house current.
- Built-in indicator shows when to recharge.
- Battery can be refilled without removal from set.
- Oversize (5/8") Dynapower Speaker with G-E Alnico-5.
- Three way tone control.

Destroyer of Crops  
Hail storms destroy more farm crops in America than tornadoes.

Daylight Saving Time  
Daylight saving time is a menace to the health of school children, according to Dr. John P. Turner, Philadelphia board of education. He stated that school children are getting only six or seven hours' sleep and many are suffering from nervous reaction because of fast time.

Half Have Lights  
Fifty-three per cent of the nation's farms now have electric service.

Found New Mexico Instead  
Searching for the fabled seven golden cities of Cibola, the Spanish conquistadores were the first white men to set foot upon what is now New Mexico.

Prices Outstrip Output  
From 1915 to 1919, total U. S. farm income rose 180 per cent but farm production went up only about 25 per cent.

America's Egg Basket  
More than 55 billion eggs will be produced on more than five million U. S. farms in 1947.

A Preference For Provincial



Marshall Field & Co., Photo

One of the reasons for the continued popularity of informal provincial furnishings is that they are suitable for either city or country living. However, in today's use of Early American and other provincial styles, the style must be adapted to a house and atmosphere comparable to its mood and manner. Accessories should fit in completely with the informal feeling, and should add to the authenticity of such interiors.

The inherent simplicity of provincial furnishings is perfectly illustrated in the room shown in this picture. Charm and comfort are the keywords—the furniture is warm tawny maple and the lampshades and candlesticks of brass lend a glow to the room. The liberal use of white for the woodwork and shag rug brings out the gay colors in the wall paper and the plaid upholstery. The same red, green, and white of the apples and leaves in the wall paper are carried out in the gingham which covers the loveseat and chair. The one wall of dark green contrasts brightly with these vivid colors. For a homemaker planning on decorating part of her home in Early American there are many modern interpretations of Early American wall paper patterns—simple floral designs, small geometrics, rough plaids and scenics. March has been designated National Wallpaper Month, so now is a good time to shop for the patterns you have in mind for spring decorating.

BRUSHING DOES IT



KEEP rayon draperies clean and sparkling between launderings or dry cleanings by giving them an occasional brushing. This also assures greater serviceability, as accumulated dirt weakens the fabric. If you're planning new draperies or curtains this season, why not try making your own! Send for the helpful free leaflet, "Tips on Sewing Rayon Draperies and Curtains." To get your copy, just send a stamped, self-addressed envelope to the Women's Page Editor of this paper.

C.C. GALLOWAY SEEKS YOUR SUPPORT

The following map herein below is the 5th Legislative District of the State of Nebraska. This is for your information on voting for your choice to represent you in the 1949 Legislative at the State Capital, Lincoln, Nebr. If you live in the boundaries of said outlined map and if you are a registered voter, you are eligible to vote in the primary election on April 13, 1948. I, C. C. Galloway, sincerely solicit your earnest consideration

at the ballot box on the above said date. I have lived in the 5th District 45 years. Have been active in civic, political, religious, and fraternal matters to make your district a better community in which to live. If I am nominated and elected, I will honestly represent the people of the 5th District. I hereby, make a solemn pledge to take the rep tape out of the Old Age Assistance Act without any increase in Real Estate Taxes. If you are interested in help-

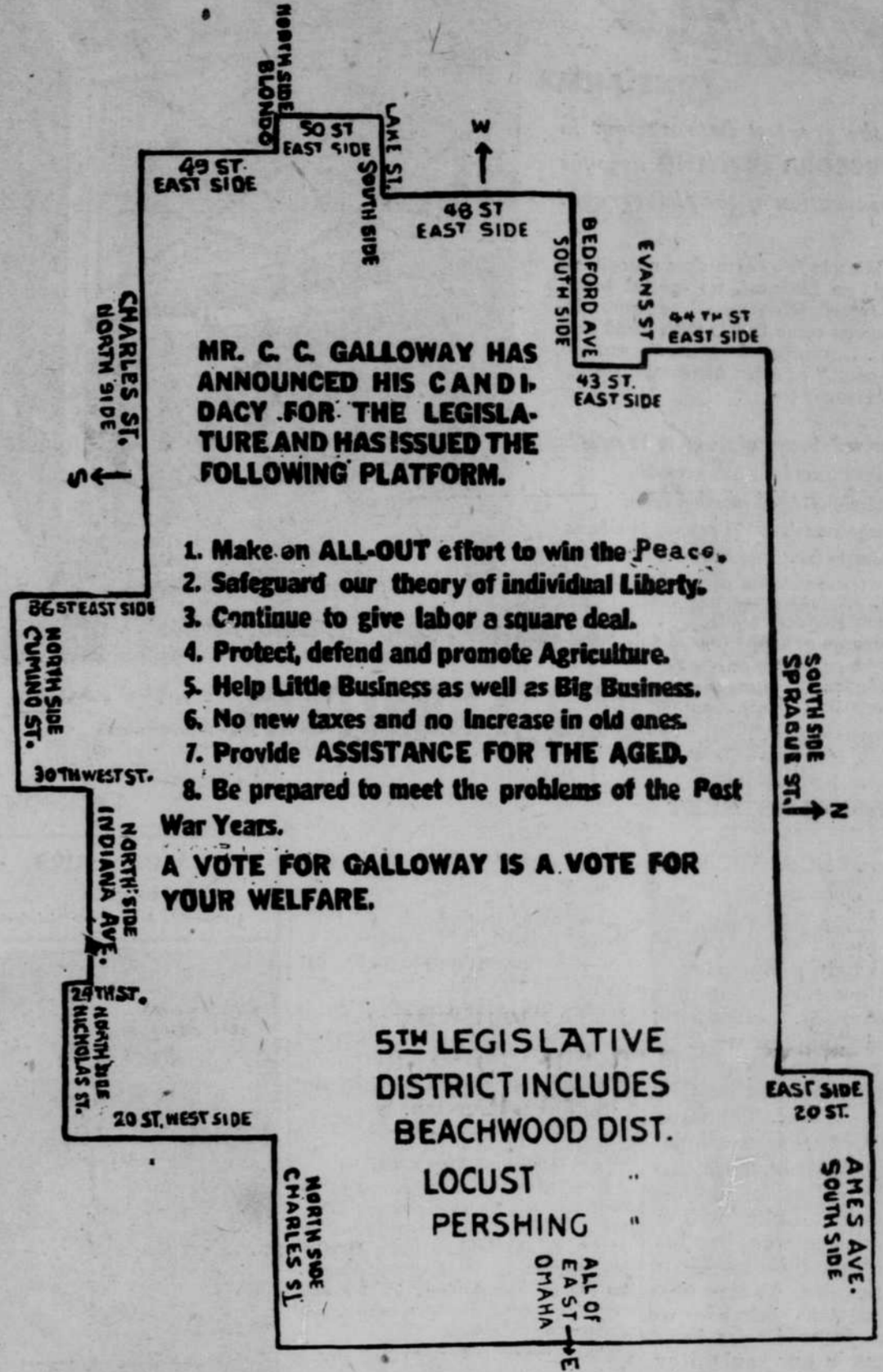
ing to elect a representative to represent you, I am asking you to stop at my headquarters, 2420 Grant street, and register in the Galloway for Senator Club. Show the strength and power of your ballot in the area in which you live. Don't fail to vote in the Primary election, on April 13, 1948.

MR. C. C. GALLOWAY HAS ANNOUNCED HIS CANDIDACY FOR THE LEGISLATURE AND HAS ISSUED THE FOLLOWING PLATFORM.

1. Make an ALL-OUT effort to win the Peace.
2. Safeguard our theory of individual Liberty.
3. Continue to give labor a square deal.
4. Protect, defend and promote Agriculture.
5. Help Little Business as well as Big Business.
6. No new taxes and no increase in old ones.
7. Provide ASSISTANCE FOR THE AGED.
8. Be prepared to meet the problems of the Past War Years.

A VOTE FOR GALLOWAY IS A VOTE FOR YOUR WELFARE.

5TH LEGISLATIVE DISTRICT INCLUDES BEACHWOOD DIST. LOCUST PERSHING



"New Look" for Dining Room, Too



TOP PHOTO—This drab, dingy wall-paper and dark furniture... BOTTOM PHOTO—After a few days work... dinged looked like this. A single wall-paper and two... ness to the old fash-

Start of Soup Kitchens  
Soup kitchens for needy children were started in Germany in 1790 when Count Rumford invited hungry children to his municipal "bread line" in Munich.

Mentally Ill in America  
Approximately seven million persons in the United States are mentally ill and their care costs the public more than 175 million dollars a year.

Insecticidal Fog Used  
An insecticidal fog applicator producing a true fog which quickly surrounds and clings to all objects and penetrates the smallest crevices is one of the latest weapons for insect control.

Origin of Indians  
There are theorists who trace the American Redmen to the lost continents of Mu and Atlantis, and still others who identify them as the lost tribe of Israel and the wandering Greeks of Homer.

Best Mouth Wash  
American Dental association reports that pure water is the best mouth wash since it is cheap, stable, readily available, non-irritating and harmless, even if swallowed.

Pick Right Knife  
Whether a knife is sharp and stays sharp depends on the quality of the steel blade and the way it is tempered. The finest blades are forged and thus are strong, flexible and easy to grind.

Mid-Day Fishing Spots  
Mid-day fishing will produce the best results if the angler will devote his attention where the water is cooler and contains more oxygen, attracting fish to strong currents and riffles or deep, spring-fed pools.

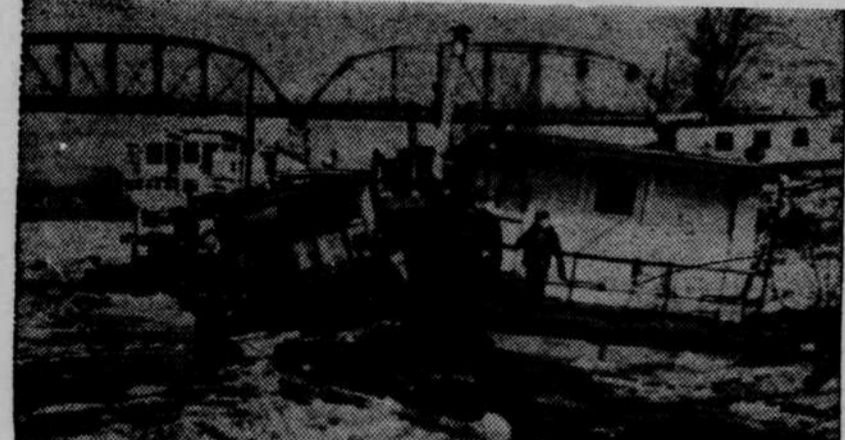
Gypsies Named by English  
They came from Egypt. It was in the beginning of the 15th century that they first appeared in the English country. They were called Gypsies because their name from the English word for gypsy.

World's Oldest City  
Dating back nearly 8,000 years, the prehistoric village of Mersin in southern Turkey, the most ancient settlement ever discovered, was unearthed recently by Prof. John Garang, 70, archeologist.

First Laws on Patents  
Franklin institute was the first to propose introducing a law for the publication of patents and for the acceptance of these patents in court as evidence.

Surface of Apple Tree  
A 12-year-old apple tree has 80,000 to 90,000 leaves, or approximately 3,500 square feet of leaf surface.

River on Rampage



CINCINNATI, OHIO—(Soundphoto)—The ice-clogged Ohio river rose slowly here and the U.S. Engineers admitted the situation "doesn't look so good." Boats were slowly being pushed against the banks of the river by the rising and expanding ice. View shows several boats tilted and given up for lost.

Cost of Living Declines



NEW YORK—(Soundphoto)—Meat, lard, flour and butter prices dropped sharply in retail food chain stores in N.Y. Metropolitan area. Porterhouse, sirloin steaks down as much as 13¢ a pound, as housewives jubilantly hailed expansion of their budgets. Economists warned drop might be temporary. Here, Mrs. Ellen Boles, customer, looks merrily as Gottfried Zose, meat department manager, changes rice tags on steaks from 79¢ to 66¢.

HOUSEHOLD MEMOS by Lynn Chambers