

**Westinghouse Electric Comforter**  
with the Automatic Watchman Control

Why? Because they're snugly covered with a lush, soft, lightweight Westinghouse Electric Comforter... the bedcovering for warmth without weight: This one Comforter is all that's ever needed even on the coldest night. Once the Automatic Watchman Control has been set it maintains the selected warmth the whole night through regardless of changes in room temperature.

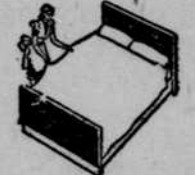
Top is of quilted rayon satin, in Rose, Blue or Green with matching underside of nonslip spun rayon faille that anchors Comforter to the bed; Outer cover dry-cleans beautifully... Inner warming sheet of preshrunk muslin is easily removable for washing; Approved by Underwriters' Laboratories, Inc. 72" x 86" allows for ample tuck-in; Mothproof, too!

\$49.85

Dainty "powder box" control automatically compensates for changes in room temperature!



Won't slip off the bed. The underside of spun rayon faille clings to the sheet.



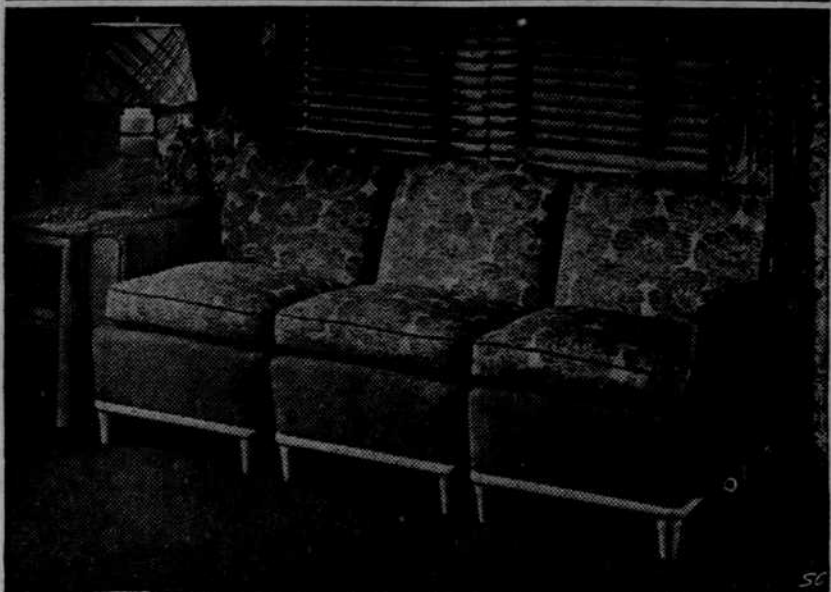
Makes bedmaking easy... Only one bedcovering! No spread is ever needed.



Rayon satin shell slips off for dry cleaning! Inner warming sheet easily washed, if necessary.

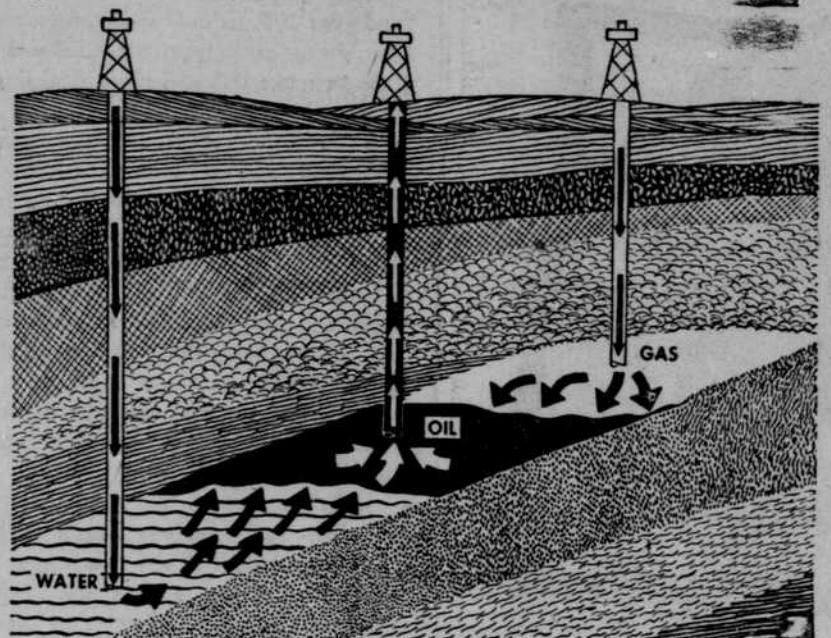
(Including federal tax.)

**FURNITURE FASHIONS** by Frances Ainsworth



GRAND RAPIDS, MICHIGAN—Here is an interesting illustration of the blending of pattern and solid color with modern oak for the new look in modern furniture. Made by the Wolverine Upholstery Co., Grand Rapids, the skillful craftsmanship and color ingenuity apparent in the Sectional Sofa and matching Lamp Table illustrated, speaks for itself of the outstanding workmanship, the dexterous handling of superb woods and fabrics, and the particular attention to detail which are world recognized trademarks of all Grand Rapids made furniture.

**Pumping Oil Fields in Reverse.**



PITTSBURGH, PA.—By pumping water and natural gas into the depths of the oil fields, modern science is bringing 10 to 50 per cent more oil to the surface. This typical cross section shows one way it's done. Here gas is pumped in above the oil pool, and water underneath it. These artificial pressures, from above and below, force the oil to flow thru the sand or rock in which it is imbedded and up the well shaft. Sketch is based on an explanation by Gulf Oil.

**"NEWS"**

Mr. Alfred Axelrod, manager and owner of the South Omaha Electric Shop, located at 5021 South 24th Street, has been in business 14 years and numbers many colored customers as his friends. He is very appreciative of the colored trade and in his many years in business has always operated 100% in all church donations and worthwhile Negro charities. When you patronize the fine modern appliance and houseware store, you can be assured of courteous attention. In addition to the modern appliances, which feature named brands, he has added a radio repair shop. You can have your old radio fixed up as good as new at a nominal cost. Pick-up and delivery service six days a week. Mr. and Mrs. Axelrod write you to drop in and purchase your Electrical Appliance, Radios, Records, and Houseware. Your trade is greatly appreciated.

Clerical Garb Unlawful  
It is unlawful to wear clerical garb on the streets of Mexico and Turkey.

**PLASTIC ENSEMBLE**



A plastic ensemble that gives her a modern, up-to-the-minute look. The hat, shoes, handbag and umbrella are all of patented plastic high-gloss sheeting. The hat is made of black lace laminated between two thicknesses of plastic flexible sheeting, according to National Patent Council. Altogether, the picture is pleasing.

**Daylight Saving Time**  
Daylight saving time is a menace to the health of school children, according to Dr. John P. Turner, Philadelphia board of education. He stated that school children are getting only six or seven hours' sleep and many are suffering from nervous reaction because of fast time.

**BLEACHES SKIN LIGHTER as You Sleep**



**Dr. FRED Palmer's SKIN WHITENER**

Skin too dark, unsightly? Try Dr. FRED Palmer's Skin Whitener tonight. Caution: use as directed. Lightens skin, acts on externally caused pimples and blemishes. 25c and 50c at drug stores. Satisfactory results or money back.

FREE TRIAL. Send 10c for postage, handling to Dr. FRED Palmer's, Dept. E, Box 204, Atlanta, Ga.

HAVE SEVERAL BUYERS FOR 6 OR 7 ROOM MODERN HOME

Call

WE-1049 OR JA-1155

S. L. CANIGLIA.

AMAZING VALUE MASSIVE MAN'S RING Looks Like \$500.00! Watch them gasp when they spy you in this massive beauty! We defy you to tell it apart from rings costing many times as much. Flashy simulated diamond, rich yellow or white gold color effect. What value for only 97c! SEND NO MONEY. Pay postman 97c plus postage. Money back guarantee in 10 days. Order NOW! MELROSE CO. Dept. 55, Box 126, G.P.O. Brooklyn 1, New York.

**Prune Coffee Cake**



For an energy pick-up, quick and nutritious, serve this excellent prune cake with mugs of milk.

Hot breads are an appetizing invitation to "come and get it" especially when winter storms are blowing outside. This year's good supplies of dried fruits make them a good item to team with enriched flour's thrifty protein, iron and B-vitamins for nourishing, flavorful coffee cakes.

A versatile bread, indeed, is this prune coffee cake with its attractive crumble topping. Serve it for breakfast, of course—but also for luncheon with a Lenten salad plate of diced fruits and cheese, and when friends drop in for "a snack".

If you dip your scissors in water before cutting the prunes, the fruit will be less likely to stick to the blades. You will also find it a good idea to "dust" the chopped fruit with part of the sifted dry ingredients to keep the fruit from sticking together.

**PRUNE COFFEE CAKE**  
2 packages yeast, compressed or dry granular  
1 cup lukewarm water  
1/2 cup melted shortening  
1/2 cup sugar  
2 1/2 teaspoons salt  
1 teaspoon cinnamon  
2 eggs, beaten  
1 cup chopped cooked prunes  
3/4 cups sifted enriched flour  
1/2 cup brown sugar  
1/2 cup granulated sugar  
1/2 cup enriched flour  
1/4 cup margarine or butter  
1/4 teaspoon salt

Soften yeast in 1/4 cup lukewarm water. To remaining water, add shortening, sugar, salt, and cinnamon. Cool to lukewarm. Add two cups flour. Mix well. Add eggs and softened yeast. Beat thoroughly. Add prunes and mix well. Add remaining flour. Mix well. Pour into greased bowl, cover and let rise in warm place (80 degrees to 85 degrees F.) until light and puffy (about two hours). Stir down and pour into greased pans nine inches in diameter. Sprinkle with topping mixture made by mixing sugars, salt, and flour and cutting in margarine or butter. Let rise until doubled (about two hours). Bake in moderate oven (350 degrees F.) about 30 minutes. Yield: Two coffee cakes, nine inches in diameter.

HOME HOURS WILL BE HAPPY HOURS WITH A WONDERFUL

**Westinghouse Radio-Phonograph**



**THE MAGIC OF FINE MUSIC IS YOURS WITH THE 169**

Has Plenti-power, Rainbow Tone FM, two short wave bands, the amazing Electronic Feather, the Automatic Record Changer which plays 10 and 12-inch records intermixed, Signal Light Control, twin record compartments, two speakers, exquisite bow-front cabinet in matched veneers—a magnificent possession!

\$600.00

**MORE THAN YOU DREAMED POSSIBLE AT SUCH LOW COST... THE 166**

You'll marvel at true-to-life Plenti-power reception... Rainbow Tone FM, the quietest, most sensitive FM ever made for home use... the amazing Electronic Feather tone arm which eliminates needle scratch without loss of musical highs... the new Automatic Changer... plays 10 and 12-inch records intermixed. \$379.95



**THE PERFECT EXTRA RADIO... THE 125 THE CONSOLE RADIO IN CAPSULE FORM**

Only 9 1/4" x 6" x 6"—ideal for crowded table tops... power and tone you'll have to hear to believe. Completely enclosed on all sides... retractable, disappearing handle that makes it easy to carry from room to room. Ivory and gold, green and gold.

\$36.95



ASK ABOUT OUR EASY TERMS

**SOUTH OMAHA ELECTRIC SHOP**

5021 SO. 24th

MA.3600

**JIM STEELE**

By MELVIN TAPLEY



**PIGGY BANKERS**



**SOUTH OMAHA ELECTRIC SHOP**

MARKET 3600

5021 SO. 24TH.