

Go To Church Sunday



BETHEL AME. CHURCH
2428 Franklin St.
Rev. B. E. Jones, pastor
Etta Mae Woods, reporter
Sunday School—9:30 a. m.
Morning Service—11 o'clock
Allen Christian Endeavor League—6:30 p. m.
Evening Worship—8 p. m.

PILGRIM BAPTIST CHURCH
25th and Hamilton St.
Rev. S. Goodlett, pastor
Miss Grover L. Marshall, rpt.
Sunday school, 9:30 a. m.
Morning Worship, 10:45
TU, 6 P. M.
Evening Worship 7:45 p. m.

BETHEL BAPTIST CHURCH
30th and S Street
Rev. Hickerson, Pastor
Sunday School 9:30 A. M.
Morning Worship 11 o'clock
BTU, 6 P. M.
Evening Worship 8 p. m.

UNION MEMORIAL CME. CHURCH
33rd and V Streets
Rev. Hubbard, Pastor
Sunday School 9:30 A. M.
Morning Worship 11 A. M.
Evening Worship 8 P. M.

ALLEN CHAPEL AME. Church
25th and R Streets
Rev. Fant, pastor
Sunday School 9:30 A. M.
Morning Worship 11 A. M.
Evening Worship 8 P. M.

MOUNT OLIVE BAPTIST CHURCH
3018 R Streets
Sunday school 9:30 A. M.
Morning Worship 11 A. M.
BTU, 6 P. M.
Rev. Mosely, Pastor
Evening Worship 8 P. M.

CHURCH OF GOD IN CHRIST
2712 R Street
Elder M. Chambers, Pastor
Sunday School 10 A. M.
Morning Worship 11 A. M.
Y.P.W.W., 6 P. M.
Evening Worship 7:45 P. M.

CHURCH OF GOD IN CHRIST
1710 North 26th St.
Elder Benson, Pastor
Sunday School 10 A. M.
Morning Worship 11 A. M.
Y.P.W.W., 6 P. M.
Evening Worship 7:45 P. M.

CHURCH OF GOD IN CHRIST
2318 North 26th St.
Elder V. M. Barker, Pastor
Sunday School 10 A. M.
Morning Worship 11 A. M.

FELLOWSHIP BAPTIST CHURCH
26th and Blondo St.
Rev. A. W. T. Chism, Pastor
Rev. Pierce, acting pastor
O. C. Joseph, Reporter
Sunday School—9:30 a. m.
BTU—7 p. m.
Prayering—11:30 a. m. and 8 p. m.
Class—Every Wed. Night.
Junior Matrons— Thursday night, 8 p. m.

CHURCH OF THE LIVING GOD
2316 North 25th St.
Rev. S. K. Nichols, pastor
Ann Oliver, Reporter
Sunday School, 9:30 a. m.
Morning Worship, 11 o'clock
Evening Worship, 8 o'clock

PARADISE BAPTIST CHURCH
1811 North 23rd St.,
Rev. Adams, Pastor
Sunday school, 9:30 a. m.
Morning Worship 11 a. m.
L.K.W. Mission, Thurs. 8 p. m.
BYPU, 6 P. M.
Evening Worship, 8 p. m.
Prayer Service, Wed. 8 p. m.

MT. NEBO BAPTIST CHURCH
33rd and Pinkney St.
Rev. J. P. Mosley, Pastor,
James Butler, Reporter
Sunday School—9:30 a. m.
Morning Worship—11 a. m.
BTU—6 P. M.
Evening Worship—8 p. m.
Men's Club—Mon. afternoon 8 o'clock.
Junior Mission—Monday afternoon, 4 o'clock.
Sr. Mission—Tuesday night, 8 o'clock.

CHURCH OF GOD IN CHRIST
1207 South 13th St.
Elder D. M. Watson, pastor
Ideil Watson, reporter
Y.P.W.W., 6 P. M.
Evening Worship 7:45 P. M.

SALEM BAPTIST CHURCH
28th and Decatur St.
Rev. W. E. Fort, pastor
L. A. Henderson, reporter
Sunday school, 9:30 a. m.
Morning Worship, 11 a. m.
BTU, 6 p. m.
Evening Worship 8 p. m.

HILLSIDE PRESBYTERIAN CHURCH
30th and Ohio.
Rev. J. E. Blackmore, pastor
Mrs. T. Newb, reporter
9:30 a. m.—Sunday school
11 a. m.—Morning Service
11th and Ella Streets
Rev. S. W. Wilkerson, pastor
Virginia Beck, reporter
Sunday school, 9:45 a. m.
Morning Services, 11:00 a. m.
ACE League 7:00 p. m.
Evening Service 8:00 p. m.
Visitors are always welcome.

CHURCH OF GOD
2025 North 24th St.
Elder S. S. Spaght pastor
Alice Brit reporter
Sunday school 9:30 a. m.
Morning Worship 11 a. m.
Evening Worship 8 p. m.

FIRST CHURCH OF DELIVERANCE
1811 North 26th St.
Rev. A. J. Thomas pastor
Miss Bernice Ellis, reporter
Tuesday and Thursday, Preaching 8:00.
Sunday School, 10:30 a. m.
Morning Worship, 11:00.
Evening Worship, 8:00

CHRIST TEMPLE CHURCH
26th and Burdette St.
"Holiness Unto the Lord"
Rev. L. M. Helf, pastor
Bertha Mallory, reporter.
Sunday school—9:30 a. m.
Morning Worship—11 a. m.
HYVP—6:30 p. m.
Evening Worship—8 p. m.

ST. LUKE BAPTIST CHURCH
29th and Burdette St.
Rev. J. C. Crowder, pastor
Joseph Cox, reporter
Sunday School, 9:30 a. m.
Morning Service, 11 a. m.
BYPU, 6:30 p. m.
Evening Worship 8 o'clock.

ZION BAPTIST CHURCH
2215 Grant St.
Rev. F. C. Williams, pastor
Sunday school—9:30 a. m.
Junior Church—10:40 a. m.
Morning Worship—11:30 a. m.
BTU—6:00 p. m.
Evening worship—7:45 p. m.

PLEASANT GREEN BAPTIST CHURCH
26th and Seward St.,
Rev. J. H. Reynolds, pastor
Sunday School—9:30 a. m.
Morning worship—11 a. m.
BTU—5:30 p. m.
Evening Worship—7:30 p. m.
Wednesday night Prayer meeting 7:30 p. m.

CLEAVES TEMPLE CME.
25th and Decatur St.
Rev. L. A. Story, pastor
Malcolm Allen, reporter
Sunday school, 9:30 a. m.
Morning Worship, 11:00
Evening Service, 8:00 p. m.

ALLEN CHAPEL AME.
5233 South 25th St.
Rev. E. F. Fant, pastor
Sunday School—9:30 a. m.
Morning Worship—11 a. m.

MORNING STAR BAPTIST CHURCH
26th and Franklin St.
Rev. L. W. Anderson, pastor
Mrs. Vera E. Hopkins, reporter
Sunday School, 9:30 a. m.

INTERDENOMINATION CHURCH
1710 North 27th St.
Elder W. L. Irving, pastor
Mrs. Mildred Bryant, reporter
Sunday School, 10 a. m.
Morning Service 11:30

FREESTONE PRIMITIVE BAPTIST CHURCH
26th and Hamilton St.
Rev. Dan Thomas, pastor
Mrs. Pinkie Oliver, reporter
9:30 a. m.—Sunday school
11 a. m.—Morning Service
6 p. m.—Y.P.W.W.
8 p. m.—Evening Service.

MT. OLIVE BAPTIST CHURCH
Rev. J. P. Mosley, pastor
Emma Curtis, reporter
Sunday School—9:45 a. m.
Morning Worship—11 o'clock
BTU—6 p. m.
Evening Worship—8 o'clock
Everyone is welcome to attend
BYPU, 6 o'clock
Evening Worship, 8 o'clock
Everyone is welcome to attend
our services at all times.

MT. CALVARY COMMUNITY CHURCH
Grant at 25th Street
Rev. R. W. Johnson, pastor
R. Hatter, reporter.
Sunday School, 9:30 a. m.
Morning Worship, 11 a. m.
Evening Worship, 8 p. m.

ST. JOHN AME. CHURCH
22nd and Willis Ave.
"The Friendly Church"
Rev. Ridley, Pastor
M. E. Webb, reporter
Sunday School—9:30 a. m.
Morning Worship—11 o'clock
Union—6:30 p. m.
Evening Worship—8 o'clock

SEVEN DAY ADVENTIST CHURCH
2760 Lake St.
Elder A. B. Humphrey, Pastor
Sabbath School Saturday 9:30 a. m.
Morning Worship 11 a. m.
Vesper Service Friday evening, 7:45 P. M.,
Wednesday Prayer Meeting—7:30 P. M.

THE SANCTIFIED CHURCH OF CHRIST
2230 Ohio St.,
Rev. J. C. Crawford, Pastor
Worship 3 p. m., each Sunday,

DAVID SPIRITUAL TEMPLE IN CHRIST COUNCIL BLUFFS, IOWA
1720 Ave A.
Every Monday evening Circle Meeting at 8:30 P. M.
Prophecy and Healing.

MT. OLIVE BAPTIST CHURCH
3010 R Street
Rev. Mosley, Pastor
UNITED SABBATH DAY ADVENTIST CHURCH
2320 North 28th St.
Elder Arthur Holmes, Pastor,
Sabbath School Saturday 9:30 a. m.
Morning Worship 11 a. m.

CALVARY BAPTIST CHURCH OF RED OAK, IOWA
603 Grimes St.,
Rev. Goldsmith, Pastor.

Julia Keene, Reporter,
Sunday school 10 a. m.
Morning worship 11 a. m.,
BYPU, 6:30.
Evening Worship 8 p. m.
Prayer meeting Wednesday
THE FIRST CHURCH OF DELIVERANCE
2621 Blondo St.
Rev. A. J. Thomas, Pastor,
liev. Frank Johnson, Asst Pst—
Rt. Rev. William Taylor, Bishop

MT. MORIAH BAPTIST CHURCH
24th and Ohio St.
Rev. F. P. Jones, Pastor
Sunday School, 9:30 a. m.
Morning Service, 11:00 a. m.
Evening Service, 8:00 p. m.

ST. BENEDICT CATHOLIC CHURCH
2423 Grant St.
Father Preuss, Pastor
Father Moran, Asst. Pastor
Low Mass—6:00
Children's Mass—8:30
High Mass—9:00.

CLAIR CHAPEL METHODIST CHURCH
22nd and Miami St.
Rev. C. C. Reynolds, pastor
Mrs. Ellis Kirtley, reporter
Sunday School—9:30 a. m.
Morning Worship—11 a. m.
Evening Worship—8 p. m.

FIRST MISSION OF THE GOD SENT LIGHT
Prophet Hess, officiator
Ora Robinson, reporter
Services Sundays, Tuesdays and Thursday nights at 8 o'clock
Private readings daily at 2010 North 23rd St.

ST. PHILIPS EPISCOPAL CHURCH
1115 North 21st St.
Rev. Stams, pastor
Mass, 7:30 and 9:00.
Church School—9:45

LIGHTEN YOUR DARK SKIN
Dr. Fred Palmer's Skin Whitener
Whitens and brightens rough, blotchy, tanned skin (externally caused). Use 7 days. If not satisfied MONEY BACK. 2c at drug stores. FREE Sample. Send 3c postage to GALENOL, Dept. CU, Box 24, Atlanta, Georgia.
DR. FRED PALMER'S SKIN WHITENER

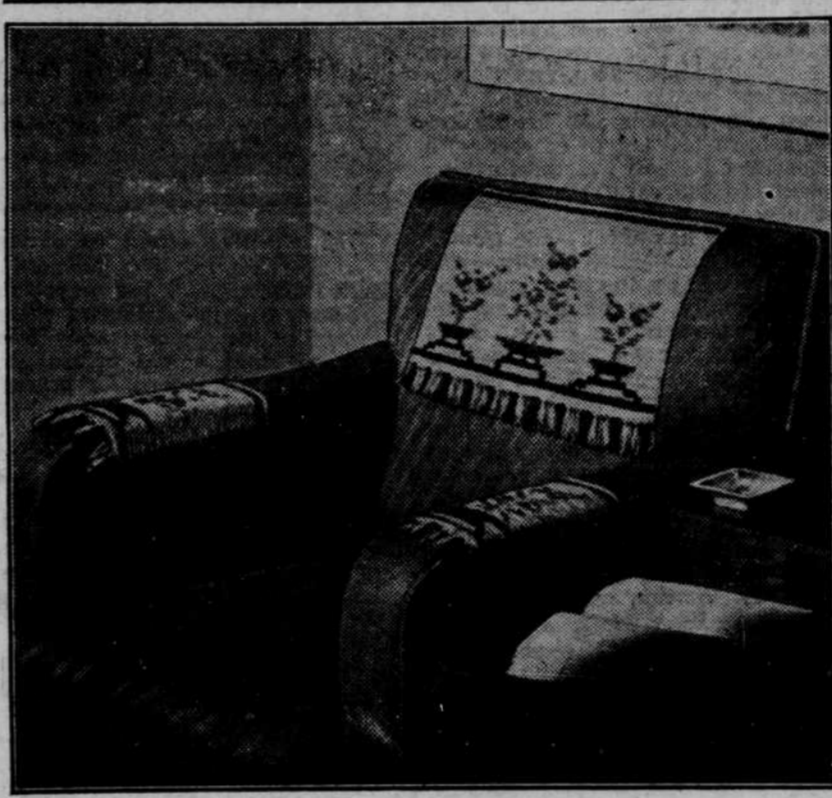
NEW! "BACTERIOSTATIC" FEMINE HYGIENE
now finding great favor among women...
Many doctors recommend regular use of douches as a precautionary measure for women who want to be clean, dainty—for women troubled by offending odor or discharge.
Some products may be harmful to delicate tissues. But not Lydia E. Pinkham's Sanative Wash! Pinkham's Sanative Wash is gaining great favor among women because it's NOT a harmful germicide. Instead—it's a mighty effective "bacteriostatic" (the modern trend). It not only discourages bacterial growth and infection but thoroughly cleanses and deodorizes. Very soothing—relieves minor irritations and discharge and has a tonic effect on delicate membranes. Inexpensive! Get your bottle of Lydia Pinkham's Sanative Wash today. All druggists.

To relieve distress of MONTHLY Female Weakness AND HELP BUILD UP RED BLOOD!
Lydia E. Pinkham's TABLETS (with added iron) have helped thousands of girls to relieve functional monthly pain and weak feelings. Pinkham's TABLETS ALSO help build up red blood and thus aid in promoting more strength. Made especially for women. Follow label directions. Worth trying!

PAVE THE WAY

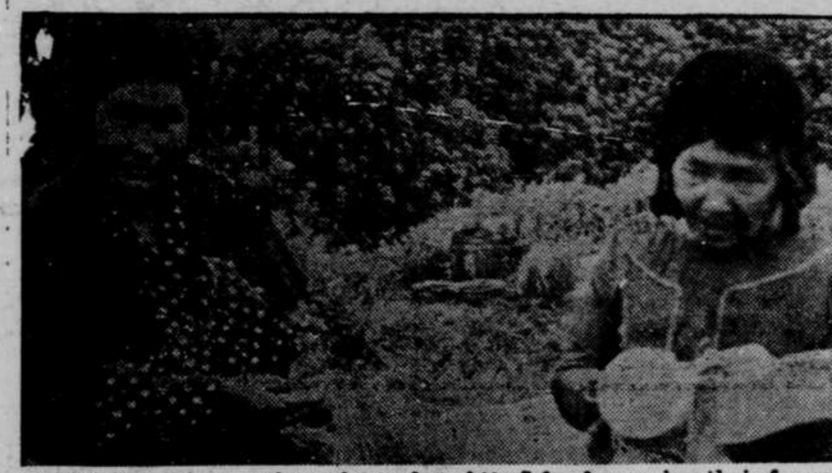
Crochet Chair Sets are Decorative and Useful
CONSERVATION begins at home. Protect your furniture with smart and attractive chair sets which are decorative as well as useful. This crocheted set which you can easily make yourself, features a splash of three vivid colors in a geometric floral design against a neutral background. It is made of pearl cotton in a Cameo stitch. The fringed tassels combine all four colors. Directions for making this chair set may be obtained by sending a stamped, self-addressed envelope to the Needlework Department of this paper, specifying design No. 50-15.

Crochet Chair Sets are Decorative and Useful



CONSERVATION begins at home. Protect your furniture with smart and attractive chair sets which are decorative as well as useful. This crocheted set which you can easily make yourself, features a splash of three vivid colors in a geometric floral design against a neutral background. It is made of pearl cotton in a Cameo stitch. The fringed tassels combine all four colors. Directions for making this chair set may be obtained by sending a stamped, self-addressed envelope to the Needlework Department of this paper, specifying design No. 50-15.

NATIVES OF ATTU ISLAND—JAP LANDING POINT



PIXPAGE—Aleut natives pictured on Attu Island, weaving their famous baskets. Japanese forces have made landings on Attu and on Kiska Island, and apparently are establishing a base at the latter. Attu is 875 miles west of Kiska, which is 589 miles west of Dutch Harbor, in the Aleutian chain of islands that stretches out from Alaska toward Japan.

War Bonds Guard Home Front



We can't all go... but we can all help! Put at least 10% of your pay in War Bonds. Sign the card today.

Be Prepared REPAIR YOUR FURNACE, STOVE or BOILER NOW!
We have a large stock of Repairs NOW—
"SINCE 1882"
REPAIRS FOR ANY FURNACE BOILER STOVE
Omaha Stove REPAIR WORKS
1206-8 Douglas St.,
—Phone AT. 2524—

To Relieve MONTHLY FEMALE PAIN
Women who suffer pain of irregular periods with crampy nervousness—due to monthly functional disturbances—should try Lydia E. Pinkham's Vegetable Compound to relieve such distress. Made especially for women. Follow label directions. WORTH TRYING!
LYDIA E. PINKHAM'S VEGETABLE COMPOUND

Auto Parts Wanted BURNED, WRECKED or DILAPIDATED. CARS and TRUCKS. BRING 'EM IN PARTS FOR CARS CONSOLIDATED AUTO PARTS CO.
2501 Cuming St. Phone AT. 5656 Omaha

24th and LAKE STREETS PRESCRIPTIONS
—Free Delivery—
WE. 0609
DUFFY PHARMACY
HELP US! HELP THE POOR CALL—
THE VOLUNTEERS OF AMERICA
Jackson 2290 15th & Chicago

STOP Scratching Relieve Itch Fast or Money Back
For quick relief from itching caused by eczema athlete's foot, scabies, pimples and other annoying skin troubles, use cooling, medicated, liquid D. D. D. PRESCRIPTION. A doctor's formula. Greaseless and stainless. Soothes, comforts and quickly calms intense itching. 3c trial bottle proves it, or money back. Don't suffer. Ask your druggist today for D. D. D. PRESCRIPTION

ALL WORK GUARANTEED
"28 Years in Business"
ECONOMY TAILOR
Chas. M. Simmons, Prop.
WE CUT, TRIM and MAKE SUITS TO ORDER
Alterations for Ladies and Gents
Cleaning and Repairing
1818 NORTH 24th St.
Omaha, Nebraska

McGILL'S — BAR & BLUE ROOM
E. McGill, Prop
2423-25 NORTH 24th St.
WINE, LIQUORS, and CIGARS
Blue Room Open 8 p. m. to 1 a. m.
Open for Private Parties from 2 to 7 p. m.
—No Charges—
WE SPECIALIZE IN MIXED DRINKS.
Free Delivery from 8 a. m. to 1 a. m.
JA. 9411
WE CARRY A FULL LINE OF BONDED LIQUORS

BUY YOUR—POULTRY AT THE NEBRASKA PRODUCE
2204-6 NORTH 24th St.
Get the Best in Quality at the NEBRASKA PRODUCE
Lowest Price
PHONE WE. 4137

KISMET LETTER KLUB
Est. 1935. Membership only \$1.00. Soldiers, men, women, all ages.
A dime brings info.
P. O. Box 602, Los Angeles, California

FEDERAL PAYS YOUR BILLS FOR HOSPITAL OR OPERATION
Costs only 3c per day : Pays up to \$325 per year
Accidents and Sickness strike quickly and Hospitals demand Cash. Federal's Hospitalization Insurance meets this emergency promptly by providing HOSPITAL ROOM and BOARD—OPERATING ROOM—X-RAY EXAMINATION—ANESTHESIA—LABORATORY EXAMINATION—MATERNITY BENEFITS—SURGEON'S FEES—SANATORIUM BENEFITS—EMERGENCY AID—AMBULANCE SERVICE—a total maximum payment up to \$325 for only 3c a day.
NO MEDICAL EXAMINATION REQUIRED—CLAIMS PAID PROMPTLY—AVAILABLE FOR THE ENTIRE FAMILY.

ACT NOW
You can't afford to be without this Low Cost protection. Let the FEDERAL PLAN pay the bills.
CLIP AND MAIL THIS COUPON TODAY!
NO AGENT WILL CALL
FEDERAL LIFE and BENEFIT ASSOCIATION
Citizens Bank Building, Wilmington, Del. U. S. N. C.
Gentlemen—Please mail me, without obligation, full Free details about your 3c a day Hospital and Surgical Payment Plan. I understand no agent will call.
Name _____
Street _____
City or Town _____ State _____

WOMEN IN "40's" who hate these trying years!
HERE'S GLORIOUS NEWS!
If you—like so many women between the ages of 38 and 52—find this period in a woman's life makes you restless, nervous, cranky, so tired and blue at times—perhaps suffer hot flashes, dizziness and distress of "irregularities"—
Start at once—try Lydia E. Pinkham's Vegetable Compound! Pinkham's Compound is the best known medicine you can buy today that is made especially for women—it's famous to help relieve such distress when due to this female functional disturbance. Lydia Pinkham's Compound has helped thousands upon thousands of women to go "smiling thru" annoying middle age symptoms. ALSO very beneficial for younger women to help relieve distress of monthly functional disturbances. Follow label directions. Lydia Pinkham's Compound is well worth trying!

Thrifty Service
6 LBS. OF LAUNDRY BEAUTIFULLY LAUNDERED FOR ONLY 50c AND ONLY 7c For Each Additional lb.
This includes the Ironing of all FLAT WORK with wearing Apparel Returned Just Damp Enough for Ironing.
EMERSON - SARATOGA
2324 North 24th St. WE. 1029

Chairs for Rent
FOR ALL OCCASIONS. REASONABLE PRICES. WE. 1517
Assembly Hall for Rent
BY NIGHT OR WEEK FOR CIVIC OR POLITICAL ORGANIZATIONS, SOCIAL CLUBS, CONVENTIONS AND ALL ANNUAL AFFAIRS. AT A REASONABLE RATE. WE. 1517.