



No. 57 This handsome dresser has new style hand carved mirror frame and shaped 22x23 French bevel plate mirror. The shaped double top measures 21x42 in. and two top drawers have shaped swell fronts; good locks, castors, brass handles. As shown, made of hardwood and rich golden oak finish. Price.....\$14 00
No. 518 Same dresser but in polished golden oak.....\$17 50
No. 519 Same dresser as No. 518 but with entire full swell front of quarter sawed and polished golden oak.....\$19 00

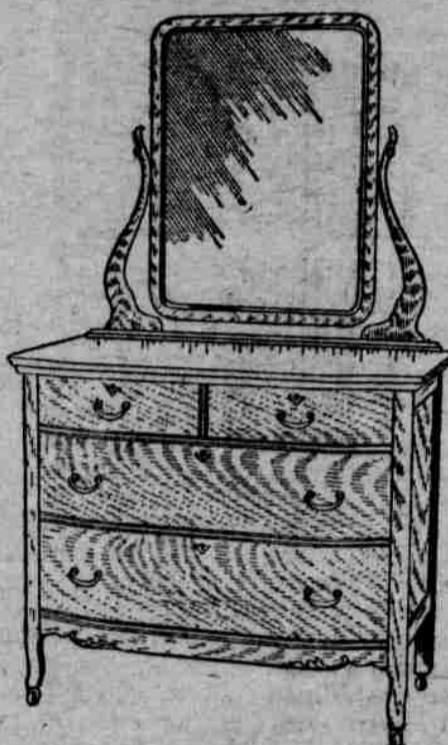


No. 476 A richly finished golden oak chiffonier; double top 20x33 in., heavy posts and side panels; all drawer sides, back, and guides are solid oak and best of workmanship; 12x18 bevel plate mirror, and complete with brass handles, locks, and casters. Chiffonier stands 68 in. high. Price.....\$7 50



No. 478 An extra wide, all solid golden oak chiffonier; extra large, roomy, well made and finished; 5 big spacious drawers, 21x40 in. top, 12x20 in. bevel French plate mirror.....\$12 00
No. 479 Same case but with carved back instead of mirror. Price.....\$9 00

No. 533 Princess dressing table. The top measure 22x36 in. Full swell front base, solid one piece ends; both drawers varnished inside and fitted with locks, solid brass handles, daintily carved base, French shaped legs and mirror standards. The shaped French plate mirror measures 40x18 in. and this case combines a dresser, dressing table, and cheval glass. In richly polished quarter sawed oak golden finish. Price.....\$25 00
In richly figured and polished mahogany veneer, or in bird's-eye maple. Price.....\$27 00



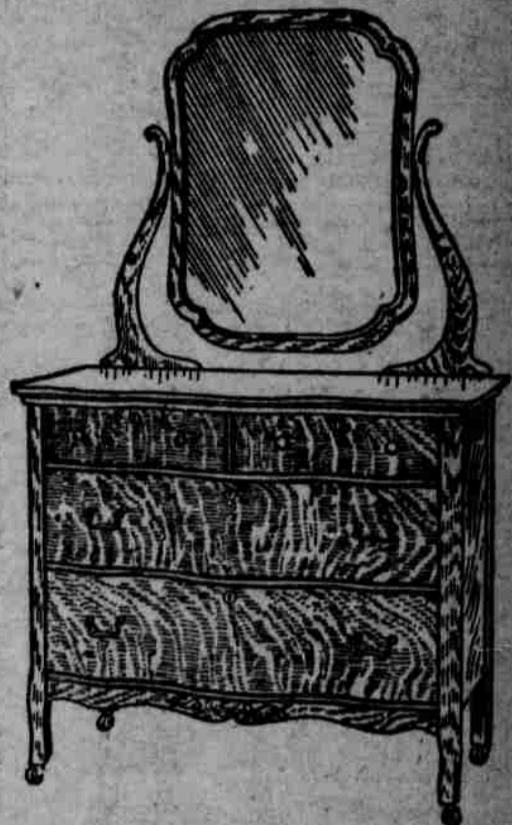
No. 523 Made in beautiful mahogany veneer or quarter sawed oak as desired. The base measures 22x44 in. The four drawers have full swell fronts and fitted with good locks and solid brass handles. Excellent drawer work and inferior finish. The French bevel mirror is 24x30 in. and is sustained by shaped standards. A dresser that is plain but rich in its plainness. Price in richly polished golden oak (quarter sawed grain).....\$22 00
No. 524 Price in beautifully figured and polished mahogany veneer.....\$24 00
This dresser can also be furnished with oval mirror if desired and should be ordered as No. 523 1/2 and 524 1/2, without change in price.



No. 488 This beautiful chiffonier has serpentine swell front, solid end panels; drawers and hat box maple lined; 18x20 in. French plate mirror, polished brass handles and locks on all drawers. Top measures 32x22 in.; high grade workmanship and hand polished finish. In quartered oak.....\$23 50
Bird's-eye maple or mahogany..... 27 00



No. 482 Chiffonier. A beautiful piece of furniture and very roomy; 6 ft. high, and top measures 22x42 in., 3 big roomy drawers and 4 swell front top drawers with center hat box of quarter sawed golden oak. Carved mirror standards and French bevel plate mirror 16 x26 in. Best of workmanship, material, and finish. Price as shown.....\$17 50
No. 482 1/2 Same chiffonier, but with top like No. 488 instead of mirror. Price.....\$13 00



No. 526 Your choice of either bird's-eye maple, mahogany or golden oak. The double top measures 22x44 in. and the base has what is known as wave, or serpentine swell front. Each drawer fitted with solid brass pulls, locks and nicely finished inside. 30x24 French bevel mirror and graceful standards. You notice the absence of carving, but the beautiful grain of the wood, the piano polish and the excellent design make this one of the richest and most handsome dressers in our stock. Price in golden quarter sawed oak.....\$25 00
In choice bird's-eye maple, or mahogany veneer.....\$27 50



No. 495 Solid oak dresser, rich golden finish. The shaped top measures 20x42 in. and full swell top drawer; 20x24 in. shaped bevel, French plate mirror supported by richly carved standards. Excellent construction and solid oak drawer work. Complete.....\$13 00



No. 491 This hardwood, well made and golden finished dresser has 20x38 in. top, 20x24 in. heavy bevel plate mirror, carved mirror frame, 1 swell top drawer, brass handles, and a challenge value.....\$8 50



No. 539 An inexpensive, but well made Princess dresser of genuine oak throughout. The shaped double top measures 19x36 in., and the two roomy drawers are fitted with solid brass handles and good locks. One piece panel ends; carved mirror frame and 18x30 in. French bevel plate mirror. Price only.....\$11 50



No. 493 This dresses is something that we know will please you. It is made of solid golden oak, nicely finished and neatly carved. It is 20 in. deep and 39 in. long, and has a 14x24 in. bevel plate mirror. Price.....\$9 50
No. 494 Same design dresser but with 20x39 in. base and 18x24 in. shaped French plate mirror.....\$10 50



No. 496 This massive genuine oak dresser has a 21x44 in. top and 24x30 in. French bevel mirror, swell top drawers, cast brass handles, nicely carved and in rich golden finish.....\$12 00



No. 514 Commode made of hardwood, best golden finish, swell top drawer, two small drawers, all brass trimmed. Top measures 19x34 in., and matches dresser. Price....\$5 00



No. 515 Same commode in solid oak but designed to match oak dresser.....\$6 00
No. 544 A very attractive pattern 18x32 in. shaped top; 18x24 French plate mirror; serpentine shaped drawer, French shaped legs, and all beautifully polished. In golden quartered oak or fine birch mahogany finish.....\$12 00
In choice bird's-eye maple..... 14 00



No. 496 An extra large hotel or combination dresser and washstand, three roomy drawers, the upper one with swell front, one large cupboard, all fitted with brass handles and carved mirror frame, and 18x30 bevel plate mirror. Towel frame and low base on one side for wash-bowl. Hardwood. Rich golden finish and top 20x40 in. Price.....\$10 00