

Typewriters

ALL MAKES

Sold, Rented, Repaired, Exchanged

We can give you a genuine bargain in rebuilt and slightly used Typewriters. Easy terms. If rented, rent will apply on purchase price when purchased. Machines shipped to any point for free examination. We are state distributors for the L. C. Smith & Bros.' Writing-in-Sight Typewriter.

Get our prices before you purchase; we will save you money.

B. F. Swanson Co.

(Incorporated)

143 South Thirteenth Street, Lincoln

AUTO PHONE 2080

BELL PHONE 1299

WESTERN BRICK AND SUPPLY CO.

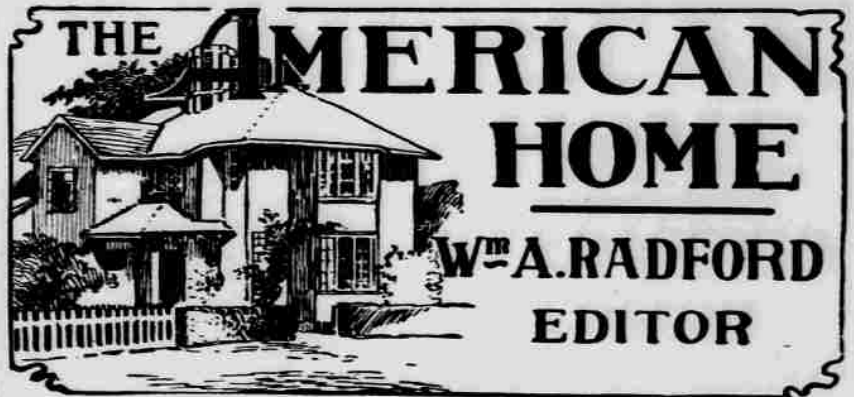
Successors to
R. S. YOUNG BUILDING SUPPLY CO.

Wholesale and Retail.

COAL AND MATERIAL

Don't forget the number—1342 O St.

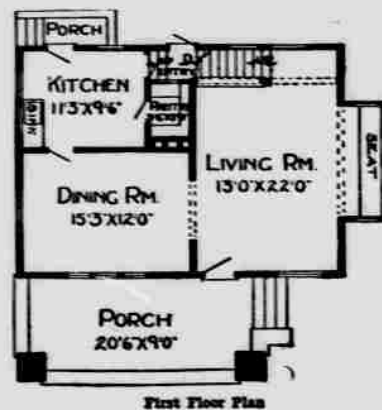
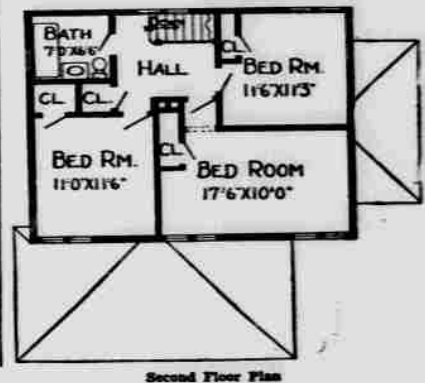
HARRY STEPHENSON, Mgr



Mr. William A. Radford will answer questions and give advice FREE OF COST on all subjects pertaining to the subject of building for the readers of this paper. On account of his wide experience as Editor, Author and Manufacturer, he is, without doubt, the highest authority on all these subjects. Address all inquiries to William A. Radford, No. 194 Fifth Ave., Chicago, Ill., and only enclose two-cent stamp for reply.

Cement plaster houses are popular in many small towns and in the suburbs of large cities. The houses are built in the manner usual with frame structures, with the exception that instead of siding being used tar paper is nailed onto the studding, furring strips are then put on and the exterior surface is either lathed with wooden lath or expanded metal is used. Expanded metal is always preferable, although lath, if not too well seasoned, is proving itself satisfactory. A coat of cement mortar is first applied and the surface of this is scratched to make a bond for the finishing coat, which is put on in a number of different styles. Often a finish of cement mortar is applied

length over all is 23 feet. What will attract all home lovers is the living room with its large bay window and window seats. It is homelike and comfortable. Invitingly near to this room is the dining-room, which is 15 feet three inches by 12 feet in size. The living room, by the way, is 13 feet by 22 feet, and with the wide doors the two may be made practical-



and on the surface of this while it is still plastic small pebbles are thrown, imbedding themselves in the mortar, as most often is done, may be troweled smooth, when the amount of water in the mortar is equal in all parts of the mix the color is uniform. Variations in the amount of water cause variations in the color, or a mottled effect.

Artistic effects may be produced also by leaving wooden ornaments in relief above the mortar. Such houses do not cost any more than frame at the present time and are much more economical, as they require no painting and no repairs.

The house here displayed is one of that style. It has a wide porch. The width of the house is 34 feet and the

ly one. The kitchen back of the dining-room is 11 feet three inches by nine feet six inches in size. There is also a kitchen pantry conveniently situated.

On the second floor, reached by a stairway from the living room, are three bedrooms. One is 11 feet by 11 feet six inches, another is 17 feet six inches by ten feet, and the third is 11 feet six inches by 11 feet three inches. All of these bedrooms open into a central hall, off which also is the bathroom, seven feet by six feet six inches.

Waterworks in a Desert.

There is a large quantity of water in the great desert of Chile, but none that either human beings or stock can drink. Science, however, has come to the aid of this rainless section of the country in the form of an ingenious desert waterworks, consisting of a series of frames containing 20,000 square feet of glass. The panes of glass are arranged in the shape of a V and under each pane is a shallow pan containing brackish water. The heat of the sun evaporates the water, writes a correspondent of the Mexican Herald, which condenses upon the sloping glass, and, made pure by this operation, it runs down into little channels at the bottom of the V and is carried away into the main canal. Nearly 1,000 gallons of fresh water is collected daily by this means.