

### Local Car Dealer Outlines Proper Winter Procedure

#### Recommends Overhaul of Cooling System; Gives Table of Proper Alcohol Solution.

"The average car owner is seldom in a position to know just what must be done to his car in the winter to approach as nearly as possible conditions as they exist in warm weather. For this reason," says Frank D. Phillips, local Studebaker dealer, "the following suggestions should be carefully observed by automobile owners."

"Before any anti-freeze solution is used the water-circulating system should be inspected for leaks, and repairs made, if necessary. It is usually a good plan to replace those connections at this time of the year. Do not use anti-freeze preparations containing calcium chloride or other similar compounds, as they corrode the inside of the radiator."

"The only satisfactory solution of which we know is alcohol and water. Denatured alcohol is preferred, but wood alcohol can be used. Wood alcohol often contains free acetic acid and should never be used unless it is known to be free from acid. If acid is present damage to the radiator will result."

**Proper Solution.**  
The following table shows different proportions of mixtures with temperatures at which the solution will begin to freeze:

"Ten per cent denatured alcohol will begin to freeze at 27 degrees Fahrenheit, 20 per cent at 27 degrees, 30 per cent at 10 degrees, 40 per cent at 2 below zero and 50 per cent at 18 below zero. "Ninety per cent water will begin to freeze at 27 degrees Fahrenheit, 80 per cent at 19 degrees, 70 per cent at 10 degrees, 60 per cent at 2 below zero and 50 per cent at 18 below zero."

"Glycerine is sometimes used with alcohol to reduce the evaporation to a minimum. However, it is rather expensive and also has a tendency to damage the rubber hose connections. If glycerine is used mix the alcohol and glycerine in equal proportions and use this mixture in the same percentage as alcohol in the above table."

"It must be remembered that it is necessary to add alcohol from time to time to replace what is lost due to evaporation. Whenever necessary to fill the radiator, to replace loss by evaporation, use a mixture of 40 per cent water and 60 per cent alcohol."

"During extremely cold weather the fan belt can be loosened, which will reduce the flow of air through the radiator and thereby allow motor to run warmer than it otherwise would."

**Radiator Cover Necessary.**  
It will assist greatly in approximating the summer temperature of the motor if a radiator cover is used. With a radiator cover that is adjustable a large part of the radiator can be covered, allowing the motor to readily warm up, and then adjusted to a suitable opening to keep the motor running warm, but still not allowing it to overheat."

"To obtain maximum efficiency from the low gravity gasoline now being used the air entering the carburetor should be moderately heated. In hot weather the normal air temperature is high enough. Provision is made, however, for heating the air entering the carburetor in cold weather. The temperature is regulated by a sleeve over the carburetor air intake, which should be closed during the winter months. It will assist greatly in approximating the summer temperature of the motor if the radiator cover is used as mentioned above."

"In starting the motor make sure that the choke is pulled all the way out until the motor starts, then push it in slightly until the motor warms up, but do not have it even partly out longer than is necessary. Do not race an engine to warm it up, run it at an engine speed approximating 20 miles per hour."

**Light Oil Recommended.**  
"Always use a light, cold test motor oil in cold weather. The motor oil should be drained more frequently in winter than in summer, as the cold temperature aggravates the dilution of the oil by raw fuel, especially when the choke is kept closed too long. It is not advisable to drive a car until after the motor has been running over at a rate of speed approximating 20 miles per hour long enough to give the oil a chance to get well into all of the working parts."

"We recommend under average conditions the oil be drained approximately every 100 miles in order to guard against excessive wear of the bearings or cylinder walls."

"Care in short-trip service in cold weather, on account of extreme dilution of the oil, should have the motor oil changed every 300 to 500 miles. If the car is not driven this far in a month the oil should be changed once a month regardless of mileage."

"Tires should be properly inflated. Watch small cuts in tires. Water will soon work into these and loosen the tire structure."

"Adjust the brakes and fit new linings, if necessary. See that the brake shafts and such parts are oiled. It is highly essential that the steering gear be correctly adjusted and that the wheel alignment be correct. Slippery pavements make it essential that the brakes and the steering mechanism be in proper condition."

### FLINT RUNNING 3D IN BALTIMORE

The Flint Motor company of Flint, Mich., builders of the Flint six, recently received from its Baltimore branch the news that the Flint Six now stands in third place in Baltimore, the number of its sales being exceeded last month only by the products of two of the oldest and best esteemed companies in the automobile business.

The standing in the Maryland metropolis is duplicated in several other cities of the country, and is especially gratifying in view of the fact that the Flint six is less than two years old. In that time national sales have jumped from 67th to 14th place among all automobile manufacturers.

### Oakland Motors Brings Out New Coach With Body By Fisher



Oakland dealers throughout the country are now showing the Oakland coach, a brand new creation with body by Fisher, representing a distinct development in coach craftsmanship. This new type is a strikingly handsome car, custom-built in appearance, with low sweeping lines, gracefully rounded corners and a distinctive color scheme in permanent Duco finish.

It has a full five-passenger body, low hung and comfortable, and is as solid and rugged in construction as it is beautiful in lines. The body frame is of selected hardwood, with precisely the same kind of construction as is used in the sedan, including complete bracing and full steel body panels. Metal is used for the back, not fabric.

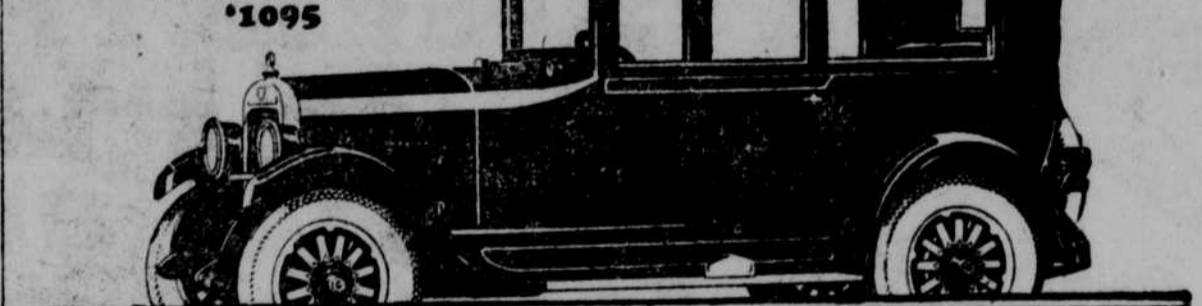
The body, hood and disc steel wheels are finished in sagebrush green with orange striping; the fenders, running gear and upper structure in black. The interior is lined in dark green upholstery of high grade worsted.

Two large doors, 34 inches wide, permit of easy entrance, either from the right or left side. Front seats are of the Pullman type, heavily upholstered and folding forward to allow passengers an unobstructed passage to the rear seat.

Roominess and unobstructed vision are two of the many outstanding features of this car. There is ample room for three in the rear seat, while the two in the front seats have not only ample elbow room, but also ample leg room.

A veritable vista of windows, two extremely large ones on each side, with the one-piece Fisher windshield in front, afford a range of vision that may be considered the maximum obtainable in a closed car.

Automatic windshield cleaner, rear view mirror, crank type quick action window lifts on doors and rear windows are included in the standard equipment in addition to the many other features of the Oakland chassis, such as four wheel brakes, centralized controls, five disc steel wheels and automatic spark control.



**25 Miles to the Gallon**  
**58 Miles per Hour**  
**5 to 25 Miles in 8 Seconds**

There is a vast difference between the new good Maxwell and any other four-cylinder car you have ever driven. It is a difference you cannot discover in a showroom.

Take the car out on the road and learn what these new and finer results are that Maxwell-Chrysler engineers have developed from a four.

Speed, 58 miles an hour—acceleration, 5 to 25 miles in 8 seconds—a performance always smooth, quiet, untroubled, and riding qualities the like of which no four has ever possessed before. And when the car is in service, a gasoline mileage of 25 miles to the gallon.

In every phase of performance and ownership the new good Maxwell is superior in value to anything in its field and at anywhere near its price.

Touring Car, \$895; Sport Touring, \$1055; Roadster, \$885; Club Coupe, \$1025; Club Sedan, \$1095; Sedan, \$1345. All prices f.o.b. Detroit subject to current government tax.

We are pleased to extend the convenience of time-payments. Ask about Maxwell's attractive plan.

**Andrew Murphy & Son, Inc.**  
14th and Jackson Here 55 Years  
**The New Good  
MAXWELL**

### Ford Fordor Sedan Price Reduced \$25

#### Reduction Also Announced on All Types of Passenger Cars.

A cut of \$25 in the price of the Fordor sedan, one of the most popular of the Ford enclosed cars, has been announced by the Ford Motor company. The same announcement carried substantial reductions on all other Ford cars. The new prices became effective December 2.

The price reductions come at a time when the car is enjoying the greatest sales in its history. For retail deliveries of Ford cars have so far this year far exceeded the same period in any previous year. Contributing to bringing about lower prices are production advancements during the year in which it has been possible to bring about many improvements and at the same time effect numerous manufacturing economies by the opening up of new resources under company control, the announcement says.

The new reduction in the price of the Fordor sedan presents it to a new and larger field of buyers. Originally priced at \$725 when it was introduced in the Ford line two years ago, the price of the Fordor was cut \$40 when reductions were announced October 2, 1923, and now, much improved in appearance by better and more attractive upholstery and equipped with many accessories, the new reduction of \$25 brings this popular family closed car to \$660.

The new list prices on Ford cars f. o. b. Detroit, are as follows:

Fordor sedan, \$660; Tudor sedan, \$580; coupe, \$520; touring car, \$290; runabout, \$260; chassis, \$225; Ford one-ton truck chassis, \$365.

### CHRYSLER AGAIN SETS HIGH MARK

With production and sales in the month of October reaching 3,606 cars the Chrysler Motor corporation has not only broken all of the many monthly production records it has previously set but has established a new high mark for the industry as well.

Never before in history has a motor car manufacturer installed entirely new equipment, rounded out a manufacturing organization and reached a monthly sales record of more than 3,600 cars within 10 months after the first public introduction of the car. It is stated by J. E. Fields, vice president in charge of sales. Mr. Fields also pointed out that this record production was all the more remarkable in view of the well-known fact that the Chrysler is built to the highest quality standards. Actually this record production was attained in eight months.

### AUTO COACH IS ANALYZED

Now that the coach craze has hit motorists in earnest, it is interesting to know what is meant by coach. The society of automotive engineers more than a year ago, defined the coach as an enclosed single-compartment body, similar in general appearance to the sedan, with two close-coupled cross-seats for four passengers. There is a luggage compartment or space for a trunk at the back of the body. There is no glass in the rear quarters. The conventional type has two doors only, the forward seats being divided and the right-hand seat tipping forward to give access to the rear cross-seat. Some models have two doors on the right-hand side, there being two fixed cross-seats.

### ROAD LIGHTING TO BE CONSIDERED

Road illumination is one of the important subjects to be considered at the conference in Washington December 19, called by Secretary of Commerce Hoover. At this conference will be representatives of the various associations, societies and agencies interested in the whole subject of traffic.

The traffic planning and safety committee of the National Automobile Chamber of Commerce recently made a study of accidents reported by various agencies during a period of nine months. Of 338 accidents were physical conditions were a major factor, 27 were due to too strong lights.

In some states dimming of lights is encouraged. In others it is prohibited. The whole tendency seems to be in the direction of the elimination of the practice of dimming. The states of Maine, New Hampshire, Vermont, Massachusetts, Rhode Island, Connecticut, New York, New Jersey, Pennsylvania, Maryland, Delaware, District of Columbia, Virginia, California and Wisconsin, do not permit dimming. Other states contemplate similar legislation.

The whole demand seems to be for a lamp that will not glare and yet will illuminate the roadway adequately.

cal conditions were a major factor, 27 were due to too strong lights. In some states dimming of lights is encouraged. In others it is prohibited. The whole tendency seems to be in the direction of the elimination of the practice of dimming. The states of Maine, New Hampshire, Vermont, Massachusetts, Rhode Island, Connecticut, New York, New Jersey, Pennsylvania, Maryland, Delaware, District of Columbia, Virginia, California and Wisconsin, do not permit dimming. Other states contemplate similar legislation. The whole demand seems to be for a lamp that will not glare and yet will illuminate the roadway adequately.



The new Oakland Coach with body by Fisher is now on display in our showroom. Its beauty and roomy comfort mark an advance in coach construction as impressive as its low price.

### The New Coach At factory \$1215

Features that are winning and holding good will

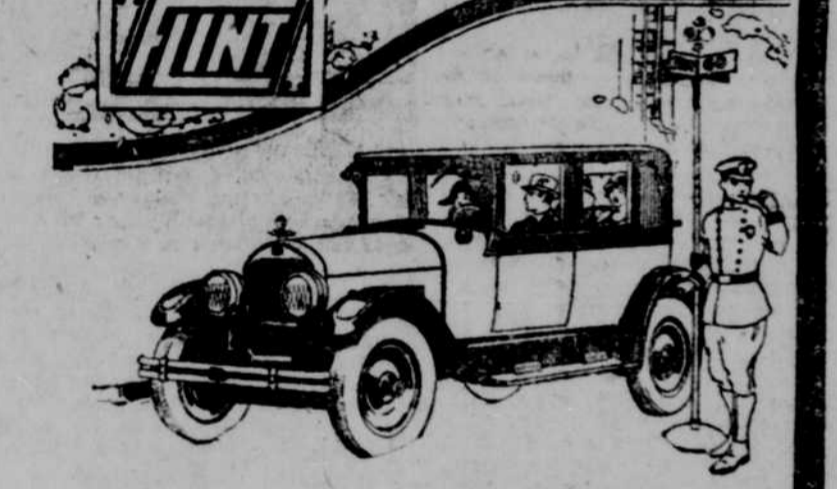
Roomy comfort for five	Balloon Tires	Controls on Steering Wheel
Duco finish in Sagebrush	Disc Steel Wheels	Permanent Visor
Green with orange striping	Unit Instrument Panel	Rear-View Mirror
Luxurious upholstery	Automatic Windshield	Transmission Lock
Four-wheel Brakes	Cleaner	Dome Light
One-piece V.V. Windshield	Automatic Spark Control	Extra Wide Doors—34 inches

OAKLAND MOTOR CAR CO.  
20th and Harney Streets

### OAKLAND PRODUCT OF GENERAL MOTORS

# You Should Drive a Six-Cylinder Car For Better Transportation Service and Satisfaction

## Buy a FLINT SIX



We will make it possible right now by buying your present four-cylinder car at list price up to the amount of \$750, 1924 models only, up to and including Dec. 24th.

Thousands of Flint cars on the street is the only advertisement we need.

Every Flint owner means two more Flint Sixes.

This is an opportunity for the holiday shopper to set himself right with the entire family.

**Omaha Flint Company**  
Guy L. Smith  
Pres. and Gen. Mgr.  
Farnam at 26th Atlantic 1944

