

### Big Drive Begins Next Wednesday

Schools and Churches Are Boosting Campaign for Charity Agencies.

Boys and girls of Omaha schools are doing everything they can to help the \$402,000 Community Chest drive which will begin next Wednesday.

Clothes so that they can attend school, doctor's care when they are sick, visits from nurses are some of the benefits of children of the city from 29 organizations which are supported by the Community Chest. Boy Scouts, Camp Fire Girls and Wolf Cubs are backed by the chest. So is the Men's Service League for Boys, which had charge of boys' week last spring. The school children are strong for the chest.

Circulars to school teachers, to be read and distributed to children, were sent out in behalf of the Community Chest. The circulars ask support for the drive in every way possible. R. A. Van Orsdel, chairman of the speakers' bureau of the campaign, addressed school superintendents and principals Wednesday. He was promised unqualified support for the drive.

Churches are also behind the movement. Every pastor is expected to make a plea for funds in his sermon or at some other time during the services Sunday.

Industrial division captains were to meet Thursday afternoon, with E. C. Loucks, chairman. The captains are taking care of the solicitation of funds in their companies. "One Day's Pay" will be the official slogan of the campaign. Methods of the Community Chest and the 29 welfare organizations which derive support from it, are being studied by the economic classes of Technical High school.

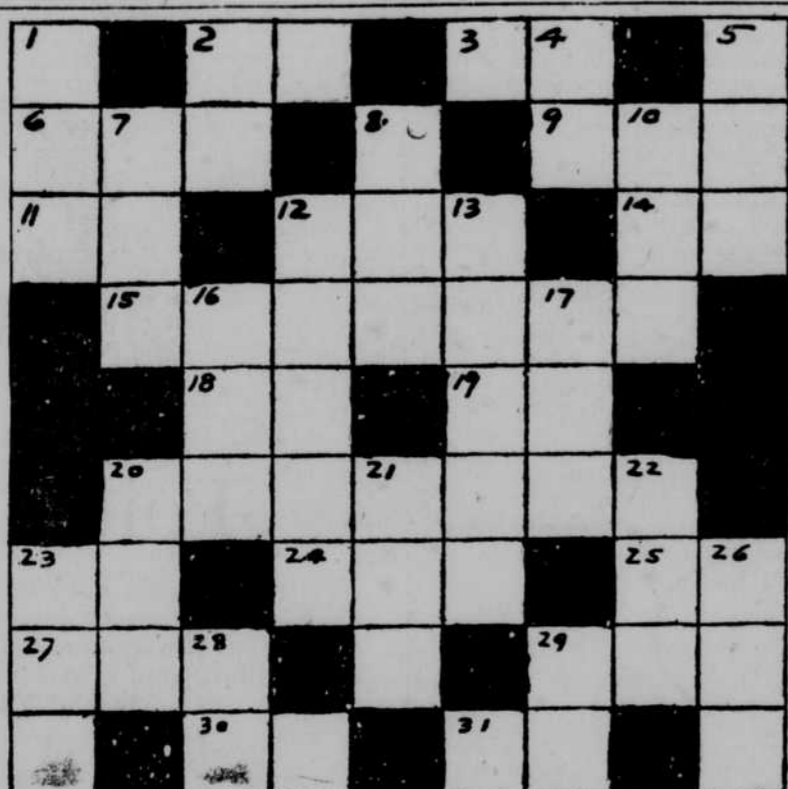
### Beatrice Youth to Seek West Point Appointment

Beatrice, Nov. 13.—Private Fred C. Arnold of Company C will take the examination at Lincoln for admission to West Point Military academy. One member from each guard company in the state will take the examination and the one averaging the highest score will be the successful contestant.

### Curfew at Emerson.

Emerson, Nov. 13.—The curfew law has been put into effect here and all children under 16 must be off the streets by 8:30 o'clock at night.

### The Daily Cross Word Puzzle



Solution of yesterday's puzzle.



Horizontal.  
2—Musical note.  
3—Any.

### 'Little Lady' Coats

Fashioned in Half Sizes to Meet the Requirements of the Petite Figure  
November Sale Prices  
**F. W. Thorne Co.**  
1812 Farnam

- 20—Negation.  
31—Postscript (abbr.).  
Vertical.  
1—Flag.  
2—Saint (abbr.).  
4—North America (abbr.).  
5—Belonging to it.  
7—Final yield.  
8—Small child.  
10—Mist.  
12—Political division.  
13—A British island.  
14—King of Babylon (Biblical).  
16—A winkle part.  
17—Born.  
20—Honorific (abbr.).  
21—Domestic animal.  
22—To draw.  
23—Mug.  
26—Pen.  
28—Half an em.  
29—To wit.

The solution will appear tomorrow. (Copyright, 1924.)

### Sunday School Workers in Convention at Odell

Odell, Nov. 13.—At a convention of the Gage county Sunday schools held here Wednesday evening, Margaret E. Brown and H. B. Kimberley of Lincoln were principal speakers. Twenty-five delegates were in attendance. Beatrice and local speakers were on the program today.

### COLD WEATHER IS HERE

The fall planting season is almost over. We can handle a few more jobs if you place your order immediately.



1912 Farnam (Upstairs) JA. 5252

### COLD WEATHER COAL SERVICE

We are on our toes, ready to serve you—a complete line of domestic fuels, and a grade for every pocket-book.

ATLAS, Furnace	GENUINE "RADIANT"	DIXIE Omaha's Finest
\$8.50 a Ton		

"BEACON", the King of Soft Coals

LUMP, Grate, per ton... \$10.50  
NUT, per ton... \$9.75



The Yellow Front at 16th and Laird. WE 7121

### BURBON & CO.

Distinctive Apparel for Women McCrory Bldg. Sixteenth Between Farnam and Douglas



**Warm Knitted Caps 49c**  
Knit caps for girls and boys for school wear. All wanted colorings.  
Friday and Saturday in Our Basement  
Basement—Arcade

**Wool Remnants 1.60**  
Several thousand yards of all-wool dress goods in various lengths. Many pieces to match. Useful for dresses and infants' frocks.  
Basement—South

**THE BRANDEIS STORE** Where Economy Reigns  
**Our Bargain Basement**

### Friday, Saturday in Our Bargain Basement

### Sale of STANDARD DOMESTICS

<b>Guaranteed Fast Color FABRICS</b> 5,000 yards guaranteed fast color dress fabrics, including Peter Pan gingham in plain shades, Anderson's fast color Puritan English prints, Renfrew tub-fast suitings and similar materials in practical mill lengths. 22½c Basement—North	<b>Imported English BROADCLOTH</b> Useful lengths in assorted colors. The season's favored wash fabric for men's and boys' shirts, boys' waists, women's overblouses, etc. One of our very best offerings. 39c Basement—North
<b>Silkoline</b> Standard quality. The wanted material for comforter coverings, etc., in assorted plain shades and fancy designs. 25c	<b>Shirting Madras</b> For men's and boys' shirts, women's overblouses, pajamas, in assorted colors, warranted fast. 25c
<b>Lenox Cretonne</b> 36-inch. An extra quality in tapestry and floral effects. For pretty draperies, furniture coverings, etc. 39c	<b>Outing Flannel</b> 36-inch, heavy quality, white and assorted fancy styles and colors. A width that cuts to advantage. 22½c
<b>Zephyr Gingham</b> A fine quality, 32 inches wide, in a range of beautiful multi-color effects and checks. Assorted colors. 25c Basement—North	<b>Outing Flannel</b> A good heavy quality in white and assorted fancy designs and colors. Specially priced for Friday. 14½c Basement—North
<b>Eiderdown</b> 36-inch cotton. Pretty printings for kimonos, house dresses, bathrobes, etc. Assorted designs and colors. 35c	<b>Dress Flannel</b> The season's favored dress fabric in a range of beautiful stripes and plaids. 36 inches wide. 69c
<b>Comforter Sateen</b> A durable material in a range of beautiful floral effects. Assorted designs and colorings. 39c Basement—North	

### Friday's Sale of Blankets, Beddings

<b>Heavy Cotton Blankets</b> 10 cases extra heavy cotton blankets in tan and gray, with fancy colored borders. Double bed size. Pair— 2.69 Basement—West	<b>Sanitary Down Pillows</b> Filled with best white goose down and covered with genuine imported Inlet linen ticking, warranted down-proof. Size 22x28 inches. Each. 5.50 Basement—West	<b>Wool Plaid Blankets</b> All-wool plaid blankets in assorted plaids and colors. Steamed and scoured. Whipped edges. Pair— 9.50 Basement—West	<b>Beacon Indian Blankets</b> In a splendid variety of Navajo styles, all neatly bound with a regular blanket binding. Each— 4.95 Basement—West
<b>Mattress Slip Covers</b> Made of standard quality unbleached muslin. Double bed size— 2.25 Twin bed size— 2.00 Basement—West	<b>Sateen Covered Comforters</b> Filled with a specially processed white sanitary cotton, beautifully scroll stitched. Some plain borders to match, others with medallion center and striped border. Size 72x84. Each— 6.95 Basement—West	<b>Plaid Wool Blankets</b> In an assortment of pretty plaids and colors, with soisette binding. Double bed size. Pair— 5.59 Basement—West	<b>200 All-Wool Blankets</b> Size 70x80 inches. Guaranteed 100% virgin wool. Colors, rose, blue, lavender, and tan, beautifully bound with 3-inch sateen in harmonizing colors. Each— 6.95 Basement—West

**Attention Men! Storm Welt Service Shoes**  
3.97 Pair  
These shoes were built expressly for men who do outdoor work. Made of tan calf-skin uppers, overweight double extension Goodyear welt viscolized soles, damp-proof and wearproof linings and reinforced stitching throughout. All sizes, 6 to 11.  
Basement—Arcade

**Women's High and Low SHOES**  
47c Pair  
A special group which we have priced at a very low figure because they are odd lots, broken sizes and ends. Their excellent quality makes them a splendid value. Many trade-marked shoes in the lot. Sizes 2½ to 8. Widths AAA to B.  
Basement—Arcade  
No Refunds or Exchanges. No Mail or Phone Orders.

**Boys', Girls' and Children's Shoes**  
2.37 and 2.87  
Values to \$5.00  
Shoes of mahogany and black calfskin or patent colt, with counters, insoles, soles and heels of solid leather, some have rubber heels. Broad nature and footform lasts. Children's sizes, 2.37; boys' and girls' sizes, 2.87.  
Basement—Arcade

**Men's Blanket Bathrobes, 3.98**  
Made of Lawrence blanket cloth, fastened at neck with buttons; two large pockets; combination girdle. Assorted colors and patterns. All sizes.  
Basement—Arcade

**Men's Pants**  
1.95 2.95 3.95 4.95  
Well made, with plain or cuff bottoms and belt loops. Worsteds, cassimeres, chevots, corduroy, etc., stripes and mixtures. Sizes 28 to 42 waist.  
Basement—Arcade

**Men's Leather Vests**  
9.95  
For outdoor work and sport wear. Made of all leather with heavy wool lining, one upper pocket and two lower pockets. Sizes 36 to 42.  
Basement—Arcade

**Flannel Shirts**  
1.95 2.95 3.95  
Of all wool flannel, heavy and medium weight. Collar attached styles, with one and two pockets. Assorted colors. Sizes 14 to 17.  
Basement—Arcade

**Exceptional Offering of CONGOLEUM Art Squares**  
The genuine Congoleum in slight mill seconds, cut from the roll. A very practical and economical floor covering, as it lies smoothly on the floor without tacking, is easily and quickly cleaned with a damp mop, and is inexpensive. Designs and colors suitable for all rooms—tile, carpet and imitation hardwood patterns.

9x12 size	7.95	6x9 size	3.75
9x10.6 size	7.20	3x6 size	1.20
9x9 size	6.15	2x3 size	.25c
7-6x9 size	5.25	18x36-inch	17c

The Brandeis Store—Basement—West

**Women's Pettibloomers, 95c**  
Mercerized pettibloomers in ¾ length, with elastic waistband and fancy colored contrasting garters. 1.25 value.  
Basement—Center

**Brushed Wool Mittens, 35c**  
Women's and children's brushed wool mittens with long cuffs. Assorted fancy colors. 50c values.  
Basement—Center

**Children's Gloves and Mittens, 59c-1.75**  
Leather and jersey gloves, mittens and gauntlets in brown and tan. All full lined. All sizes.  
Basement—Center

**Women's Wool Gauntlets, 1.00**  
Brushed wool sport gauntlets with large bell cuffs. Plain colors with fancy striped cuffs. Women's and misses' sizes.  
Basement—Center

**Schmoller & Mueller Piano Co**  
NEBRASKA'S OLDEST & LARGEST MUSIC HOUSE  
1514-16-18 Dodge St. — Omaha

### To the Women of Omaha

We have placed the advertisement here especially for your attention, to urge you to see—

### BLANCHE SWEET CONRAD NAGEL

in a screen masterpiece,  
**"TESS of the D'Urbervilles"**

Which opens a 7-day engagement at the SUN Theater, starting tomorrow.

We know this sort of an appeal has been made to you before—but we are more than anxious to have you see this photoplay, for we are confident you will agree with us that Blanche Sweet's work in this picture far surpasses anything she has done heretofore. You will actually live her life, watch every move she makes and leave the theater well satisfied and delighted that you acted on our judgment and recommendation.

### —FRIDAY— A Special Purchase —SALE—

of Silk, Wool and Velvet DRESSES

Newest Shades—Latest Style Creations—  
**\$10.75**  
Friday Only at

Special Selling of **Fur Trimmed Coats**  
2 Great Groups  
Black — Brown — Grey  
Cranberry — Every New  
Material — Finest Fur  
Trimmings **\$35 and \$45**