

Public and Parochial School Picnics Annually Grocers' Picnic

Mayor Dahlman Entertains All Grade School Kiddies Twice Each Season---Get Free Rides

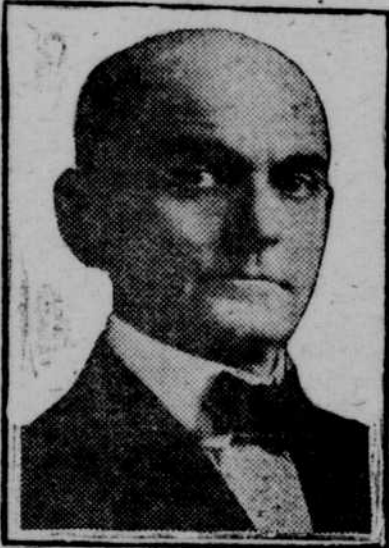
One of the big events of the season for the kiddies is the series of grade and parochial school outings given by Mayor James Dahlman.

Mayor Dahlman not only arranges for all the school children to have a good time at the park at his expense but he attends each one and participates in the fun.

To accommodate all the school children the same day would more than tax the park to capacity, so the city is divided into groups and a certain number of schools are entertained at each outing.

The first of these outings this year will be held on June 17. The dates of the other outings follow: June 19, 25 and 27. This year he will give two picnics, the same schools which were entertained in June will be feted again in July.

Free rides, refreshments and street car fare are furnished each child.



J. C. Dahlman

Nine o'Clock Is Witching Hour

All Ages of People Present at Park at That Time.

Nine o'clock is the witching hour at an amusement park.

Then the crowd is at its height. The folks who came during the afternoon hours and the kiddies who rode all the rides and had all the fun in the world up to about darktime are still there—a little sleepy but reluctant to go home.

The married couples who sedately walk around in groups of four, six and eight go to the pool for a dip and are all there about 8 o'clock.

And then! Ah, yes, and then! At about 9 o'clock come the sheiks and the vamps, the young folks, full of life—ready and eager to try everything in the park—dashing madly from one amusement to another—emitting whoops and shrieks and enjoying

life with a zip and zest which all the older folks envy.

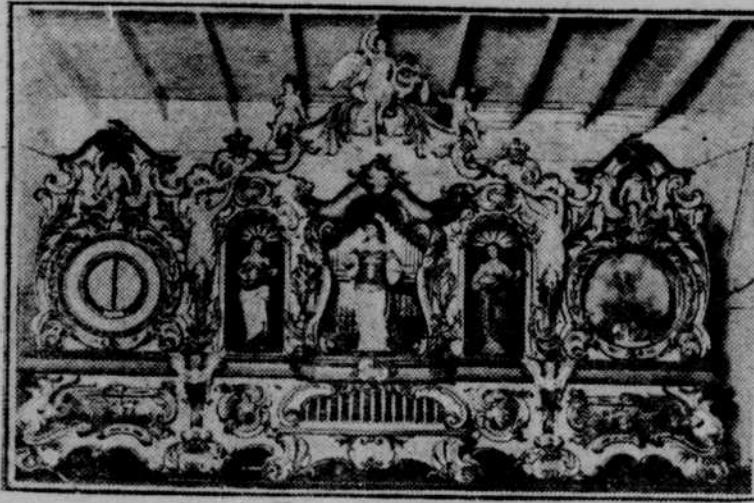
Not to be forgotten at about 9:15 come the ballroom crowd. The dancing couples whose terpsichorean ability is the admiration of crowding multitudes—dreamy eyes roaming the ceiling while the strains of the latest popular waltz or fox trot is wafted through the park.

It is the peak hour, when all the different sort of people are gathered together and if by 9 o'clock there isn't a crowd the park manager is long faced—for it won't grow in proportion after that hour. The late arrivals are equalled by the ones who go home early.

Big Sand Beach Offers

Room for Fun and Frolic
You do not need to go to the seashore to enjoy the pleasures of a sand beach. Krug park swimming pool is nearly surrounded by a sand beach 35 feet wide. The beach is protected from surface water by an outside concrete wall, a concrete floor and is always clean and free from the objections of many natural sand beaches.

New \$12,000 Electrical Band Can Be Heard All Over Park



Krug Park is the first to introduce in the middle west the electric band, which plays popular music on the same principle of a player piano. This new musical device was installed near the merry-go-round and the galloping iron steeds now step in harmony with all the popular fox trots. It has a large enough volume to be heard over the entire park and the picnickers now have music with their lunches. The instrument cost \$12,000. It is beautifully carved

and artistically designed, in fact is one of the cleverest pieces of handiwork in the huge park.

Accommodations for Dancers Are Provided

For the dancers' accommodation, large parlors adjacent to the Ball Room, completely equipped with necessities for the toilet, have been provided. Two elderly matrons are in attendance for the younger folk.

Is a Big Event

One of the big picnics of the season that appeals to both kiddies and grownups is the grocers' and butchers' annual frolic for which all members of the Omaha Retailers' association close their doors that day and turn out en masse, together with all their customers. This picnic brings a minimum of 10,000 people and special attractions are staged that day. The date for this year's frolic has not been set but arrangements already are in progress and the officials predict that it will be a banner one.

John Ek, secretary of the association, announces that many prizes will be given away this season. Last year four Shetland ponies, a motor car and a radio set were given away.

SPENT YEARS ON ORANGEADE

Patrons sip the delightful park orangeade and wonder at the delicious orange flavor that is retained in this most popular of orange drinks.

Although the secret is guarded most carefully by the park's drink concession manager, the juice of hand-picked oranges is used in the preparation of the drink.

The manager of the concession has spent many years perfecting this delightful drink.

OMAHA BATTERY CO.

2212 Harney

At. 3394

Serves You at Krug Park

Vesta Batteries Used Exclusively

Their electrical requirements are many and must be maintained. We can serve your individual needs with the same constant quality service.

Battery and Electric Service for All Cars

AT KRUG PARK

Where Only the Best Is Served

Pure ingredients and the skill of expert bakers make Butter-Nut the standard for Quality and Excellence.

Schulze's

BUTTER-NUT BREAD

Helps to Make the Sandwiches So Delicious

Use Schulze's Butter-Nut Bread when making sandwiches—nothing is quite so tasty. And this healthful wheat food adds zest to the joy of living.

SCHULZE BAKING CO.

Omaha, Neb.

