

Management Can't Explain This Knockout

New Attraction
as Baffling to
Owners as Public

You Can't Walk, You Can't
Sit Down, You Just Laugh
—Billiard Balls Run
Up Hill—All Laws of
Gravitation Defied
In Newest of Fun
Creations.

MYSTERY over a n d above all things is the most fascinating thing in life. It is the extra special added thrill to the emotion of the living and is probably the most poignant pang to death. It has been a charm, a recreation and a religion for mankind in various forms since the earliest day.

Within the past year there has been an architectural discovery which may have an important bearing on much that has been mystifying in the past. The discovery has been capitalizing in the name of the "mysterious knockout." This new attraction has been built in Krug Park, and is proving a veritable sensation.

Just a Room, but—

Imagine a large, plain room. The windows open upon a pleasant garden scene. But as the visitor steps inside he feels a peculiar sensation—a force that almost irresistibly impedes his efforts to walk across the floor. A turn of the body and the force impels the visitor forward. If he stands still his body leans at a toppling angle and as he walks he sways in parabolic curves. In his bewilderment he has an inordinant desire to laugh and all about him are others pulling and pushing and leaning and laughing, trying to walk and trying not to walk, sitting down and trying to get up. Be it some awesome mysterious thing of that mystic region which lies above, below or beyond the Actual, nevertheless everybody laughs because there are so many funny things happening before their very eyes.

Balls Roll Uphill.

A billiard ball placed in the groove of a trough rolls to the ceiling or rolls down, depending upon whatever motivates a billiard ball to roll in any direction up or down. A broom inclined towards the floor rises to a standing position when released.

Shades of Cagliostro, Anna Eva Fay, Houdini and the Zanezigs. Never did they do these things.

Over, above and beyond the uncanny manifestations of this strange power in harness is the physical sensibility of its force. It is a sensation surpassing comprehension. And what is profoundly more interesting is that the builders working at Krug Park are completely at a loss to understand the mystery of the sensation.

What do park people do in the winter? Some travel, some work with theaters which run in the winter only—some find similar work in the south.

**Benson Tire
-- Service --**

W. A. Sturtz

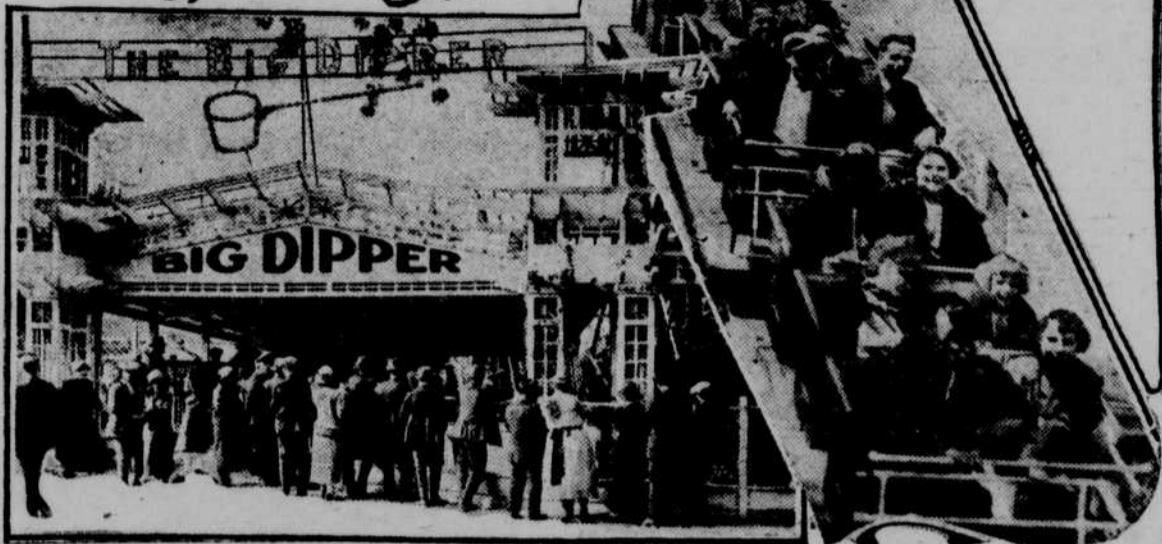
**Road Service
All the Time**

WA. 1662

**Vulcanizing
Tires and Tubes**

6141 Military Ave.

*A Mile
of Dips and Thrills*



Big Dipper Most Popular of Park's Many Rides

Few persons realize the thought and effort that is put into the designing of structures in undulating lines and sinuous routes and have climatic thrills.

Probably the greatest of these devices is the roller coaster, or big dipper, a thing of curves and dips and banks and turns that delights half of Omaha on holiday bent.

One of the greatest roller coasters in the country is to be found

at Krug Park. Over every inch of the mile track there's a spine shiver for the riders.

Sixteen dips, ranging from 25 to 75 feet, with a thrill at the top, the bottom and the incline, sends the patrons away with a tingle in their veins.

One ride isn't enough for this greatest of amusement rides. The kiddies and grown folks ride and ride and ride.

Model City Teems With Life

It took the inventor, Alvin Frank, 20 years to complete the Model City, which is an established attraction and which never loses its fascination to park patrons. They marvel that human brains and hands could build such an intricate masterpiece of engineering, carpentry and artistry. Alvin Frank made it a reproduction of his own home town with a great fidelity to detail.

The Model City teems with life. Steamboats move up and down the river with whistles blowing.

Trains, street cars and automobiles hurry about.

Factories and sawmills operate. The Model City is a marvel of mechanical construction, electrically driven and lighted.

Monkey Hotel Houses 20 New Occupants

Twenty new occupants have just arrived to take possession of Krug Park's monkey hotel. From the world famous zoological gardens of Carl Hagenback, Gergen, Germany, these jolly little monkeys have arrived and are ready and waiting for "Skinny and the gang" to feed them peanuts.

Concert Pianist Heads Orchestra

Frank W. Hodek, pianist-conductor of the famous 12-piece symphony orchestra that bears his name, is by no means a new star in the musical firmament, although his orchestra only recently sprang into prominence as the leading dance aggregation in the west.

Hodek is well known as a concert pianist, and as a director of musical comedies, choral and light operas as well as orchestral organizations.

His first trip was as director of "Mikado." Born in Baltimore, Md., his early musical training was under Howard Thatcher of the Peabody Conservatory of Music. After two years preliminary training he entered the conservatory proper from which he was graduated with highest honors. Two more years of post-graduate work under such renowned musicians as Ernest Hutchison and Howard Randolph prepared him for his concert work and study under Professor Hermann of Prague conservatory, Bohemia.

Mr. Hodek's ambition has been realized in his present organization of artists. Every man is an artist and furthermore is studying for the concert field.

Thompson-Beldens



Jantzen Bathing Suits

All-wool suits, knitted to fit perfectly. Accomplished swimmers wear the Jantzen because it gives perfectly with every movement, yet springs instantly back into place. Black, navy, copenhagen, red, tobacco, orange, purple and green, plain or striped. Caps and hose knitted to match.

Children's sizes, \$2.95 and \$4.50
Cadet sizes, \$5.75
Women's sizes, \$7.50

"The Best Place to Shop, After All"

Park Is Mecca for Picnickers

Schools and Fraternal Organizations Make Dates for Omaha Amusement Place.

Krug park is becoming the Mecca for picnickers within a 75-mile radius of Omaha.

Although the picnic season still is in its infancy, more than 100 industrial and fraternal organizations, Sunday schools, grade schools, rural schools and high schools have applied for reservations.

When the season for outings is further advanced, the park will be the scene of several large picnics each day in addition to the private ones.

A large space is appropriated for the use of picnickers, and the grounds are equipped with outdoor kitchens, which boast gas ranges, cooking utensils and other paraphernalia designed for such occasions.

The park also has established a supply depot and furnishes lunches, or any commodity for a lunch, at wholesale cost.

ATHLETIC FIELD NEW FEATURE

For the accommodation of organizations which have baseball games and athletic contests in conjunction with their picnics, Krug park has established a regulation baseball diamond and athletic field in the new auto parking space just east of the park.

A. Gospe Co.

1513-15 - Douglas St.

\$1 or More Per Week



Buy a
**VICTOR
Brunswick
KIMBALL
EDISON
PATHE
or
COLUMBIA**



All
Finishes

Your Favorite Make Is Here
Some Used—Others New at 1/2 Price

BUY A BEAUTIFUL NEW Baby Grand



\$565

Small in size but
wonderful in
tone.



\$595

Special low price
for this week—a
musical gem.



\$695

Don't fail to see
this Grand if you
are a musician.

Several Bargains in Used Grand Pianos



New and Used
Upright Piano
and
Player Pianos



Many styles and prices to select from—
Used Pianos \$87.50 Up
New Pianos \$285.00 Up

Two \$350 Rebuilt Pianos, Fine Shape.	Three \$300 Rebuilt Pianos on Sale—	Two \$375 Rebuilt Pianos, Very Fine.
\$145, \$98	118, 134, 138	\$172, \$278

Convenient Terms

A. Gospe Co.

1513-15 - *Art & Music* **Our 50th Year** at Omaha Neb. **Douglas St.**