



Before and after seeing the monkey. Grandchildren of Mrs. Charles T. Neal. Top row: Emily Florence Baker and Nancy Alice Baker, daughters of Mr. and Mrs. Samuel F. Baker of Kansas City. Lower row: Alice Bodman Neal and Margaret Thomas Neal, daughters of Mr. and Mrs. Charles Beebe Neal of Omaha.



The new nurses' home at the University of Nebraska hospital. It has been named Conkling hall, in memory to Clementine C. Conkling, whose will provided for a scholarship in the University of Nebraska School of Medicine for deserving medical students. The three photographs show an exterior view of the home, the reception room and the big parlor-living room.



**She is No Longer Fat**

She found a way to reduce her fat. It was a way far more pleasant than dieting or exercising would have been. This new way allowed her to eat foods without danger of becoming fat again.

She found *Marmola Prescription Tablets*. They aid the digestive system to obtain the full nutriment of food. They help Nature to turn food into muscle, bone and sinew instead of fat.

*Marmola Prescription Tablets* are made from the famous Marmola prescription. Thousands have found that these handy tablets give complete relief from obesity. And when the accumulation of fat is checked, reduction to normal, healthy weight soon follows.

All good drug stores the world over sell *Marmola Prescription Tablets* at one dollar a box. Ask your druggist for them, or order direct and they will be sent in plain wrapper, postpaid.

**MARMOLA COMPANY**  
225 Garfield Bldg. Detroit, Mich.

**The popular and fascinating game**  
**Mah Jong \$1**

Complete set, consisting of 144 Tiles, 116 Counters, Dice, Racks, rules, playing directions and perpetual score card, postpaid on receipt of \$1.

Satisfaction guaranteed or money back

DON'T DELAY. ORDER TODAY AND BEGIN TO PLAY

**ORIENTAL SPECIALTY CO.**  
152 West 42nd St., Dept. "Z" New York

**Richelieu Pearl CHOKERS FOR EASTER**  
AT THE BETTER SHOPS



Charming effect Quality M \$7.75



Adorable contour Quality PO \$11.00



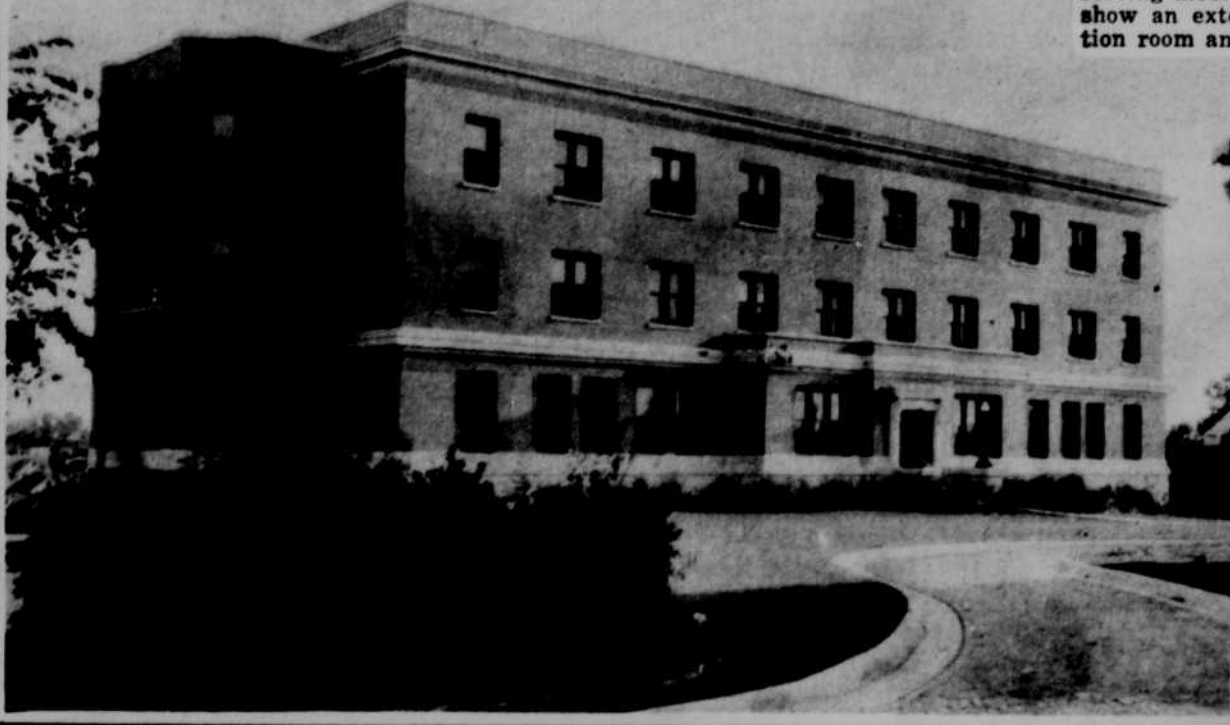
Exquisite line Quality C \$17.00



Demanded Quality \$50.00



Distinctively Different RICHELIEU PEARLS are made in AMERICA by J.H.M. LABORATORIES BOSTON, U.S.A.



**Join the Summer Migration to Seattle and "The Charmed Land"**

Snow-capped mountains, great stretches of primal forests, hundreds of lakes, surf of the Pacific, the largest and most scenic inland sea on the continent, thousands of miles of wonderful highways with paved roads diverging from the prosperous, interesting, hospitable cities and every out-of-doors sport you have ever enjoyed—with additional recreations peculiar to this region—make this the Summer Playground Supreme.

This is the sportsman's paradise. You can fill your creel quickly. Salt water, lake and stream fishing is unmatched. There are trout streams almost without number. Automobiles, small steamers, suburban and steam lines, make these spots quickly accessible at a most nominal cost. Cool and invigorating summer days—the average being 61 degrees—are followed by restful sleep under blankets every night. Cold, sparkling

mountain water always. There are no flies, no mosquitos, no ground pests, violent wind or rain storms. Winter, too, is mild, as the Japanese trade winds bring warmth. Flowers bloom out of doors Thanksgiving and Christmas. Snow is a rarity. There is abundant health in Seattle, America's healthiest city. No vacation, or home land affords so much of interest and benefit at so modest an expense. Excellent accommodations everywhere and no "tourist" charges.

The Hospitality Bureau of the Chamber of Commerce will help plan your vacation upon arrival. Seattle is a picturesque, bustling, metropolitan "Out West" city. Enjoy new experiences, scenes and people, a new world to our friends in the Middle West. Write Chamber of Commerce, 917 Arctic Bldg., Seattle, Washington, for free 36-page illustrated "Charmed Land" booklet, or call at The Omaha Bee Travel Bureau for a copy.

Annual Rainfall (in inches)	
U. S. Weather Bureau	
SEATTLE	39
CLEVELAND	30
ST. LOUIS	37
KANSAS CITY	37
PHILADELPHIA	41
BOSTON	46
NEW YORK	46

Average summer temperature 62  
Average winter temperature 41

**Reduced Rates**  
Round-trip, Omaha to Seattle, May 15 to September 30, \$72.00.  
See that your ticket to any part of the Pacific Coast reads "Via Seattle."

**SEATTLE--Metropolis of the Pacific Northwest**  
THESE ADVERTISEMENTS PAID FOR BY SEATTLE CITIZENS WHO INVITE YOU TO SEE "THE CHARMED LAND"

**On NORMANDY VOILE—the dots are fast!**

**H**AVE you seen what perfectly adorable designs have been created—with distinctive little raised dots—on the new Normandy Voiles? There's a whole flower-garden of new colors, as well as modish dark shades.

The same little appliqué dots which are used to make these entrancing designs, also give a desirable weight to Normandy Voiles, that keeps them from crumpling.

The many poor imitations make it advisable to buy only when you see the words "Normandy Fabric" on the selvage, or in the label of the ready-to-wear dress.

**FRED BUTTERFIELD & CO., INC., 361-363 Broadway, N. Y. C.**  
*Makers also of the famous Lingette*