

Sale of Flexible Flyer Sleds
Flexible Flyer sleds, substantially made and constructed with the finest materials obtainable. Regular \$5.75 to \$8.50 values. **\$3.97** For one day only.
Downstairs Store.

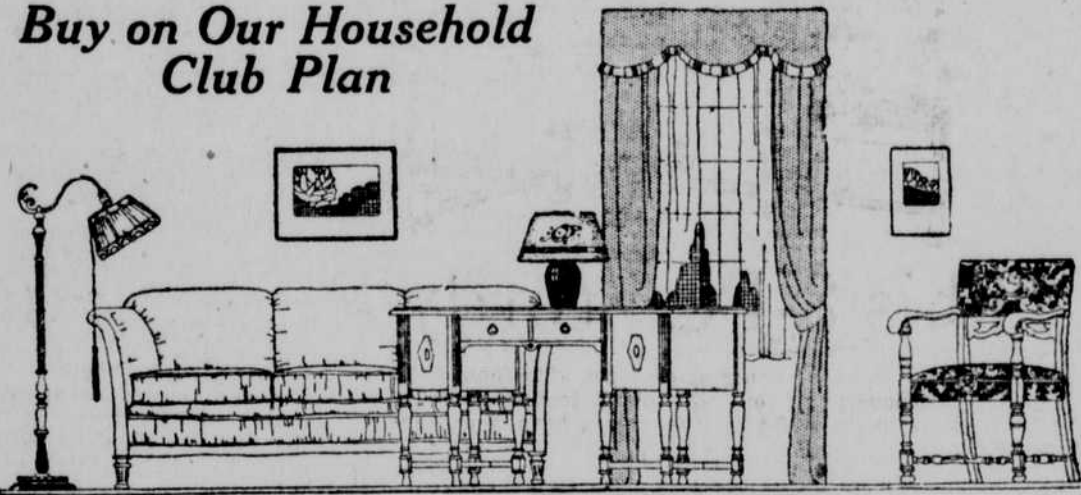
BURGESS-NASH COMPANY.

"EVERYBODY'S STORE"

The Party Lady
The bridge hostess or the hostess for any special occasion may consult our Party Lady for novel ideas, clever color schemes and attractive favors.
Pomegranate Shop—Second Floor

The Last Week of Our February Furniture Sale

Buy on Our Household Club Plan



3-Piece Taupe Mohair Suite \$269.50

Typical of Sales Values in Living Room Pieces

The sofa is large enough for three to sit on comfortably and embodies the desirable spring construction—loose spring cushions resting on a spring base and a spring back. The suite consists of a sofa, arm chair and wing chair.

Gateleg Table \$24.50

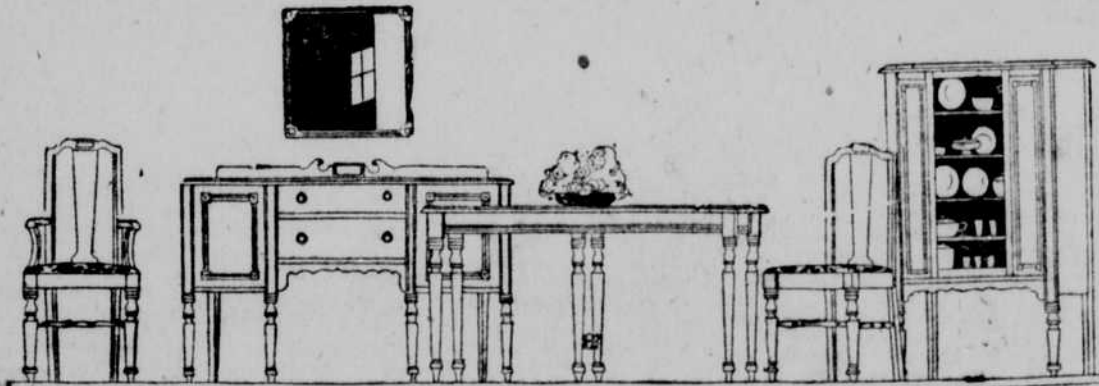
The oval-shaped top solid mahogany table may be used in the living room or as a breakfast table.

Occasional Chair \$22.50

Of solid mahogany and finished in antique. A very unusual value at this price.

Spinet Desk \$24.50

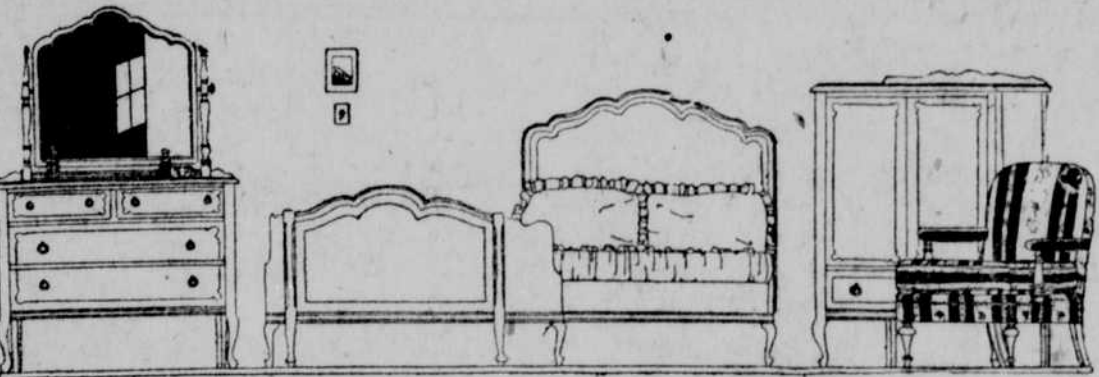
This graceful type of desk with ample compartments for writing material is of birch, finished in mahogany color.



8-Piece Dining Room Suite \$136.50

With Mellow-Toned Spanubrian Finish

This is an opportunity to save an unusually large sum and at the same time purchase an 8-piece suite from one of the best known makers of fine furniture. The table, the popular oblong style, will extend to six feet, and its two-toned Spanubrian finish is visible evidence of high standard quality. Many other sets and complete suites at prices equally low.



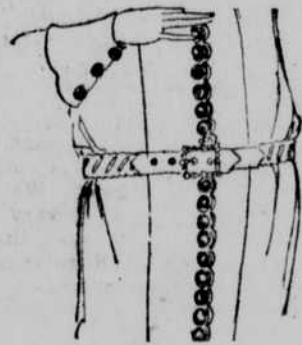
Bedroom Completely Furnished \$186.50

With Bed, Dresser, Vanity and Chiffonette

Four essential pieces for the bedroom, the bed, dresser, vanity and chiffonette are marked at a figure ordinarily not covering the cost of fewer pieces. They are walnut combined with gumwood, with a rich two-toned brown finish. The bow-end bed is full size; the dresser, 48-inch size, has a generous mirror; the vanity is triple mirrored, and the chiffonette is fitted with sliding trays.

Fourth Floor

Charming New Accessories for Spring



Belts

Inch-wide suede, plain braided or laced effect belts add the tailored air to frock or suit. In tan, gray, taupe, fawn, green. Novelty buttons, too, have returned to adorn the spring frocks.

50c to \$1.50



Rhinestone Fobs

add a feminine touch to the masculine taitleur. Heart fobs set with white stone brilliants dangle on a grosgrain ribbon.

\$2.75



Rhinestone Accoutrements

for the spring chapeaux add a smart touch, especially if the model be a brimless satin cloche.

\$1.65 and \$1.85



Ribbon Scarfs

Nothing more truly feminine than a versatile scarf to draw tightly about one's neck or to drape languidly about the shoulders.

\$3.00 and Up

New Silk Dresses for Spring

\$45⁰⁰ to \$89⁵⁰



Distinctive models that proclaim "the silhouette stays slim and straight"—albeit that same slim silhouette is softened by panels, cape effects and graceful drapes. Novel treatment of sleeves and neckline add individuality to their modishness. Fashioned of

Crepe Faille *Cashma Crepe* *Georgette*
Crepe Romaine *Flat Crepe* *Satin Canton*

Some look to smart embroidery or unique buttons for ornamentation, others are plain. In the spring shades:

Moss Green *Paris Gray* *Lanvin Green* *Beige* *Stucco*
Poudre Blue *Blue Stone* *Navy* *Brown* *Black*

Misses' sizes, 14 to 20. Women's sizes, 36 to 44.

Flannel Dresses

Smart flannel dresses for sports \$39.50, \$49.50, \$59.50
wear are priced in three groups:

Third Floor



Beautiful Dress Gingham

Yard 29c

This excellent quality gingham comes in the popular check designs in all the season's wanted colors. The width is 32 inches.

Second Floor

New Shoes for Spring

Include Novelty Pumps



New models of footwear that present many interesting variations, and are especially designed to add to the beauty of spring frocks and suits are here.

Pump of jack rabbit gray suede with fancy cutout throat and buckle. The vamp, straps and quarters are trimmed in gray kid. Hand-turned soles and covered military heels. (As illustrated.)

\$13⁵⁰

Gray suede Colonial pump trimmed in dark gray lizard and large buckle. Covered Spanish heels and hand-turned soles.

Main Floor

February Sale of Silk Hose

For Men and Women

Four Groups of Women's Hose

\$1 69

\$1 39



All the Newest Spring Shades

600 pairs of hose, including Granite silk-to-the-top and fancy French clock hose in several effective patterns. Nude, blush, atmosphere, bombay, fawn, thrush, airdale, oriental pearl, tan bark and black are the colors. Sub-standards of our \$2.75 to \$3.25 values.

1,600 pairs of Granite, Proper and other well-known makes of hose. These are in medium and chiffon weights, with lisle tops and reinforced feet. All the season's newest shades are shown—blush, bombay, airdale, aztec, oriental pearl, fawn, thrush, cruiser, taupe, nude, gray, buff, fallow, tan bark, sand, oakwood, dawn, silver, gunmetal and black. These are irregulars of our \$2.00 and \$2.50 qualities.

59c

\$1 95

1,200 pairs of art silk hose, made with lisle tops and reinforced feet. In colors of cordovan, gray, beige, beaver, airdale, tan bark, aztec, nude, oriental pearl and black. These are slightly irregulars of our regular \$1.00 quality.

Sheer chiffon hose, silk from top to toe, are offered in all the newest shades—dawn, nude, oakwood, banana, gunmetal, black, silver, log cabin, cinnamon, otter and mulot. These are slightly irregular in weave. Regular \$4.50 and \$6.00 values. First quality, medium weight, plain or fancy lace clocked hose in black, taupe, gold, tan and gray. Regular \$3.50 value.

Men's Silk Hose—Plain silk and silk-ribbed hose in black, brown, navy, white and gray. Some have slight imperfections. Sizes 9 1/2 to 11 1/2. Regular 75c values 39c—2 pairs for 75c

Main Floor

REMNANT SALE

Silks, Woolens, Velvets, Linings

1/3 to 1/2 Less Regular Prices

69c a Yard 95c a Yard At \$1 45 a Yard At \$1 95 a Yard

Novelty stripe silks, kimono silks, ratine silk poplins, china silks, pongee silks, tube vestings. \$1.00 to \$1.50 values.

Printed silks, black satin messaline, stripe taffeta, honat pongee, printed tricolette, natural pongee, colored crepe de chine, kimono silks. \$1.59 to \$1.95 values.

Alltype crepe, marigold crepe, canton crepe, satin canton, printed canton, white sport satin, colored taffeta, black satin, printed crepe de chine. \$2.00 to \$2.95 values.

Printed sport silks, colored flat crepe, printed knitted silks, silk duvetone, showerproof foulards, printed radium, colored canton crepe. \$3.00 to \$3.50 values.

At \$2 45 a Yard

Three Groups of Wool Goods

Yard 95c, \$1.45, \$1.95

Many desirable lengths of fine woolens are included. Suitable for dresses, blouses, skirts, wraps, suits. Included are poiret twill, French crepe, plaids and stripe shirtings, velours, tweeds, homespuns, serges and coating.

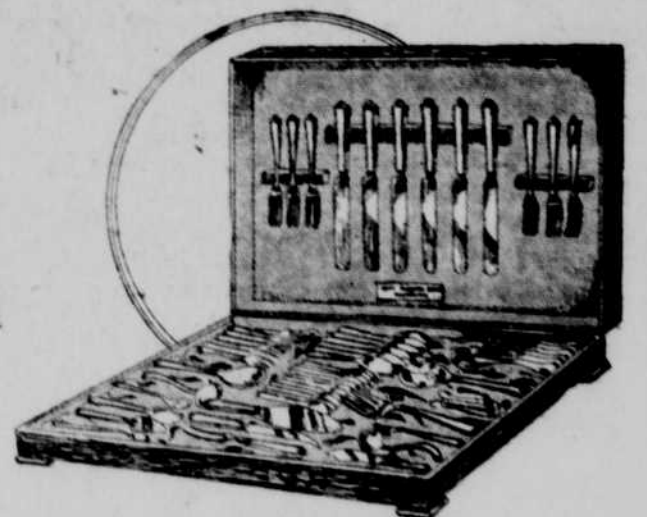
Second Floor

"One of America's Great Stores"

A Special Offering of the Famous 1847 Rogers Bros. Silverware

We take great pleasure in announcing to our customers that we are now direct representatives for 1847 Rogers Bros. silverware.

We will at all times be glad to give expert advice on correct table setting for all occasions, assist you in selecting your tableware, give you suggestions as to the care of silverware and supply you with all patterns of 1847 Rogers Bros. silverware. For 75 years the family plate.



26-Piece Buffet Chest

Which includes six dinner knives, hollow handle; six dinner forks, six tablespoons, six teaspoons, one butter knife and one sugar shell is priced at \$31.85

A set of six teaspoons, any pattern, is priced at \$3.75

The 'Honeymoon' Chest

(pictured)

is a 57-piece set, consisting of six knives, six forks, six salad forks, six teaspoons, six soup spoons, six butter spreaders and all the odd serving pieces; priced at \$91.85

Buy on Our Household Club Plan. See the wonderful display in our 16th Street Window.

Main Floor