

Seven Hundred Cases Handled by Charity Chest

Appeal Made for Payment of Pledges; Budget Committee Examines Expenditures of Agencies.

More than 700 relief cases were handled by the material aid agencies of the Community Chest during January, according to reports compiled by George Carey, secretary of the Omaha Welfare Federation and Community Chest.

"Clothing, fuel, rent money, groceries and other aid were given these families," Secretary Carey said. Dr. Irving Cutter, president of the Chest, said that the administration and the campaign expenses will be within the 7 per cent as promised to the people during the last campaign.

"Ninety-three cents of every dollar is used to aid the unfortunate and the distressed," he said.

An appeal was made yesterday to all those who haven't paid the first quarter of their pledges to do so at once.

"This money was due on January 1," said Dr. Cutter. "The chest has allotted the money to the 30 agencies comprising the chest and it must be paid."

The budget committee is meeting regularly to examine expenditures of the agencies in the chest.

Pool Also to Run on Progressive Ticket

Lincoln, Feb. 9.—Secretary of State Charles W. Pool today joined his fellow democrats office seekers who have been nominated on both the democratic and progressive ballots when he accepted a petition filed by I. W. Jacoby of Havelock asking him to accept a progressive nomination.

Pool is the third democrat within a week for whom progressive petitions have been filed, the others being Edgar Howard of Columbus and Charles W. Bryan. The name of Congressman Shallenberger has been on the progressive ballot for some time.

The secretary of state did not attempt to conceal his elation at the filing of the petition with its 34 signatures.

"Of course I shall accept," he said. "Why not?"

Jacoby announced that he had filed for re-election as state representative with the Lancaster county clerk.

Others to file today include Charles E. Allen of Coad, who is a candidate for the state senate on the republican ticket from the Thirtieth district; S. M. Ewing of Benkelman, democrat, who is seeking a place in the house of representatives from the Eighth district; and Ida M. Thurber of Lincoln, who filed petitions for alternate to the democratic national convention from the First district.

Supreme Court Judges Get Chance to Catch Up

Lincoln, Feb. 9.—Only 12 cases are listed on the final call of the state supreme court for the week of February 18, issued today by the clerk of the court. The cases are limited in order to give justices an opportunity to catch up on cases already argued before them, the clerk said.

The final call follows: For hearing Monday, February 18: Liggett against Bertwell, Douglas; First Trust company against Anderson, Douglas; Egbert against state, Adams; Elliott against White, Platte.

For hearing Tuesday, February 19: Berkovitz against Morton-Gregory company, Douglas; Rose against Chicago & Northwestern Railroad company, Lancaster; McCue and Jacobs against state, Clay; McEwen against Allied Contractors, Saline.

For hearing Wednesday, February 20: Geise against Varter, Lincoln; Lutz against Skinner Manufacturing company, Douglas; Allen against Treater, Lancaster; Meyer against state, Richardson.

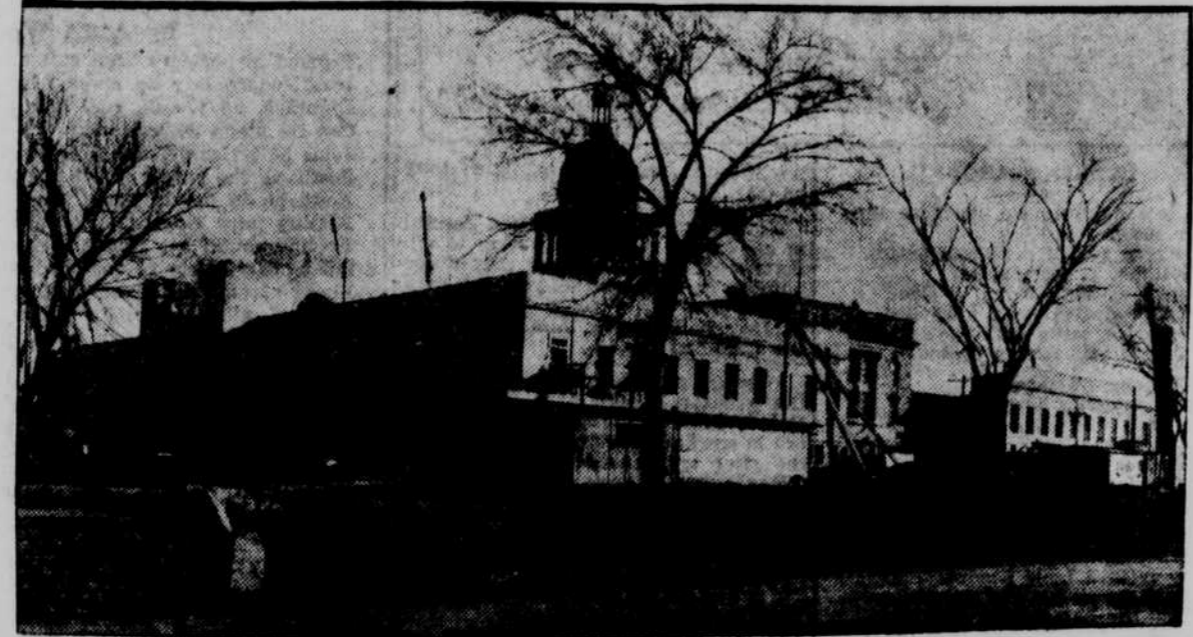
Motorists Cut Funeral Processions and Are Held

Two motorists were arrested Saturday afternoon for driving through funeral processions.

Louis Koehler, 4678 Pierce street, was arrested at Twenty-fourth and Harney streets, and Dr. William Sturgess, 554 South Thirty-fifth street, was arrested at Twentieth and Castelar streets. Both men were released on \$50 bond.

The arrests came as the result of a recent order by Police Commissioner Dunn that a motorcycle officer shall accompany all funeral processions.

First Unit of New Capitol to Be Completed by August



Nebraska's new state capitol as it looks today. Note the great main entrance. An idea of its height may be gained by comparing it with the tower of the old building and the opening in the new building through which the material from the old building will be removed.

By R. H. PETERS, Staff Correspondent The Omaha Bee.

Lincoln, Feb. 9.—The first unit of Nebraska's new capitol, being constructed in three units, is nearing completion. The stonework is practically finished and inside the structure, whose windows are covered with oiled muslin, workmen are plastering.

The partitions are all up in the north wing, partitions of hollow tile on which wire mesh and plaster is laid, while in the south section partitioning will be finished in a few days. A number of rooms in the north wing have been plastered and floors are down in some of them.

In the governor's rooms workmen are busy with molds preparing the special wall finish.

Heat is maintained at 60 degrees by a plant distinct from that heating the old building and Commissioner of Lands and Buildings Swanson announced recently that half a ton of coal was required daily on cold days to maintain the necessary temperature.

Although it is anticipated that the unit will be completed by August it is not yet known whether it will be immediately occupied. The legislature must use the old building and the use of the two buildings would require more than twice as much coal as the old building was used exclusively until the conclusion of the session.

Further, there is no appropriation for furnishing the new unit and the advisability of moving the furniture now in use into it is questionable.

Now that the unit has reached a point where some idea of the eventual appearance of the building may be gained, it is noted that there is a marked similarity between it and plans for new skyscrapers to be built in New York City under the new zoning act. Like the capitol,

Further, there is no appropriation for furnishing the new unit and the advisability of moving the furniture now in use into it is questionable.

Now that the unit has reached a point where some idea of the eventual appearance of the building may be gained, it is noted that there is a marked similarity between it and plans for new skyscrapers to be built in New York City under the new zoning act. Like the capitol,

Further, there is no appropriation for furnishing the new unit and the advisability of moving the furniture now in use into it is questionable.

Now that the unit has reached a point where some idea of the eventual appearance of the building may be gained, it is noted that there is a marked similarity between it and plans for new skyscrapers to be built in New York City under the new zoning act. Like the capitol,

Further, there is no appropriation for furnishing the new unit and the advisability of moving the furniture now in use into it is questionable.

Now that the unit has reached a point where some idea of the eventual appearance of the building may be gained, it is noted that there is a marked similarity between it and plans for new skyscrapers to be built in New York City under the new zoning act. Like the capitol,

Further, there is no appropriation for furnishing the new unit and the advisability of moving the furniture now in use into it is questionable.

Now that the unit has reached a point where some idea of the eventual appearance of the building may be gained, it is noted that there is a marked similarity between it and plans for new skyscrapers to be built in New York City under the new zoning act. Like the capitol,

Further, there is no appropriation for furnishing the new unit and the advisability of moving the furniture now in use into it is questionable.

Now that the unit has reached a point where some idea of the eventual appearance of the building may be gained, it is noted that there is a marked similarity between it and plans for new skyscrapers to be built in New York City under the new zoning act. Like the capitol,

Further, there is no appropriation for furnishing the new unit and the advisability of moving the furniture now in use into it is questionable.

Now that the unit has reached a point where some idea of the eventual appearance of the building may be gained, it is noted that there is a marked similarity between it and plans for new skyscrapers to be built in New York City under the new zoning act. Like the capitol,

Further, there is no appropriation for furnishing the new unit and the advisability of moving the furniture now in use into it is questionable.

Now that the unit has reached a point where some idea of the eventual appearance of the building may be gained, it is noted that there is a marked similarity between it and plans for new skyscrapers to be built in New York City under the new zoning act. Like the capitol,

Further, there is no appropriation for furnishing the new unit and the advisability of moving the furniture now in use into it is questionable.

Now that the unit has reached a point where some idea of the eventual appearance of the building may be gained, it is noted that there is a marked similarity between it and plans for new skyscrapers to be built in New York City under the new zoning act. Like the capitol,

Further, there is no appropriation for furnishing the new unit and the advisability of moving the furniture now in use into it is questionable.

Now that the unit has reached a point where some idea of the eventual appearance of the building may be gained, it is noted that there is a marked similarity between it and plans for new skyscrapers to be built in New York City under the new zoning act. Like the capitol,

Further, there is no appropriation for furnishing the new unit and the advisability of moving the furniture now in use into it is questionable.

Now that the unit has reached a point where some idea of the eventual appearance of the building may be gained, it is noted that there is a marked similarity between it and plans for new skyscrapers to be built in New York City under the new zoning act. Like the capitol,

Under State Supervision

This is a mutual co-operative savings institution chartered by this state.

It conforms to the law governing co-operative savings associations in its organization, management and investigation of funds.

Our funds are loaned only on the best grade of first mortgages and no one can lend money on security superior to this. While giving you the best possible degree of safety you also receive a higher interest rate that rapidly increases the amount of your savings.

Assets . . . \$12,643,000 Reserve Fund 445,000

Expert Packers Furnished Fire-Proof Storage JA 1504

Terminal Warehouse Co. 10th and Jones—On Viaduct

Low Freight Rate Household Goods

WE LOAD CARS To Denver Feb. 14 Los Angeles Mar. 10

Expert Packers Furnished Fire-Proof Storage JA 1504

Terminal Warehouse Co. 10th and Jones—On Viaduct

Assets . . . \$12,643,000 Reserve Fund 445,000

Expert Packers Furnished Fire-Proof Storage JA 1504

Terminal Warehouse Co. 10th and Jones—On Viaduct

Assets . . . \$12,643,000 Reserve Fund 445,000

W. A. Ramser Hat Renovator

Now Located at 1415 Harney St. Phone JA 2196 Second Floor

Now Located at 1415 Harney St. Phone JA 2196 Second Floor

Now Located at 1415 Harney St. Phone JA 2196 Second Floor

Now Located at 1415 Harney St. Phone JA 2196 Second Floor

Now Located at 1415 Harney St. Phone JA 2196 Second Floor

Now Located at 1415 Harney St. Phone JA 2196 Second Floor

Now Located at 1415 Harney St. Phone JA 2196 Second Floor

Now Located at 1415 Harney St. Phone JA 2196 Second Floor

Now Located at 1415 Harney St. Phone JA 2196 Second Floor

Now Located at 1415 Harney St. Phone JA 2196 Second Floor

Now Located at 1415 Harney St. Phone JA 2196 Second Floor

Now Located at 1415 Harney St. Phone JA 2196 Second Floor

Now Located at 1415 Harney St. Phone JA 2196 Second Floor

Now Located at 1415 Harney St. Phone JA 2196 Second Floor

Now Located at 1415 Harney St. Phone JA 2196 Second Floor

Now Located at 1415 Harney St. Phone JA 2196 Second Floor

Now Located at 1415 Harney St. Phone JA 2196 Second Floor

Now Located at 1415 Harney St. Phone JA 2196 Second Floor

Now Located at 1415 Harney St. Phone JA 2196 Second Floor

Now Located at 1415 Harney St. Phone JA 2196 Second Floor

Where Economy Reigns OUR BARGAIN BASEMENT The Brandeis Store Shop Here and Save

MONDAY—YARD GOODS AND REMNANTS On Sale at Greatly Reduced Prices

Silks, Wool Dress Goods, Domestics, Wash Goods, Toweling, Linen and Others Are Included

A Great Group of SILK REMNANTS One group of silk remnants in lengths from 1 1/2 to 6 yards. 36 and 40 inches in width. Charmeuse, canton crepes, crepe de chine, faille crepes, satins, messalines and taffetas. A wide range of attractive patterns and color combinations. At About 1/2 Price	500 Yards of Fine COATING REMNANTS Pure all-wool bolivia. Most desirable for misses' and women's coats, capes and wraps. Navy, blue, black, brown and kit fox. 54-inch width, in lengths from 1 1/4 to 4 yards. Regular 3.95 and 7.50 values. Per yard, 1.95	A Great Group of TOWELING REMNANTS Consisting of toweling in cotton, union and linen. Good useful lengths from 1 1/2 to 6 yards, for dish or roller towels. Hundreds of yards to choose from. Remarkably good values in this great group. At About 1/2 Price
------------------------------------------------------------------------------------------------------------------------------------------------------------------------------------------------------------------------------------------------------------------------------------------------------------------	-------------------------------------------------------------------------------------------------------------------------------------------------------------------------------------------------------------------------------------------------------------------------------	-------------------------------------------------------------------------------------------------------------------------------------------------------------------------------------------------------------------------------------------------------------------------------

Remnants of GINGHAM

4,500 yards; beautiful plaid and checked patterns in new spring styles and colors; convenient lengths. **19c**

Bleached Sheets

Extra heavy quality muslin made with center seam and hemmed ready for use. **1.10**

Mohawk Sheeting

Unbleached; known for its wonderful washing and wearing qualities. 9-4x81 inches. Monday, yard, **62 1/2c**

Lingerie Crepe

Silk striped lingerie crepe; a wanted fabric for misses' undergarments and nightgowns. Regular 75c quality. Special Monday, per yard, **59c**

White Voile

Beautiful soft chiffon finish with taped edge. 40-inch width. Regular 45c quality. Monday, per yard, only, **39c**

Cotton Eiderdown

Printed cotton eiderdown; a wide range of pretty patterns and colors. 36-inch width; regularly 35c. **25c**

Apron Gingham

Amoskeag staple brand, in new checked and plaid designs. 27-inch width. Special for Monday, at, per yard, **25c**

Merit Percal

Light, dark and gray grounds; suitable for kimonos, dresses and shirts. 36-inch width. Monday, yard, **21 1/2c**

150 Pieces of GINGHAM

Included are the famous Anderson Zephyr, Toile du Nord, Brookleigh and other famous brands. 32 inches in width; formerly 48c to 75c a yard. Special for **39c** Monday at, per yard.

Wool Mixed Plaid BLANKETS

Made with strongly whipped ends; a large assortment of colors. 70x82-inch size. Regular 6.00 value. Mon- **5.00** day, per pair.

Beacon Indian BLANKETS

Guaranteed all fast colors; all edges are nicely bound with mohair two inches wide. 60x80-inch size; regular **4.95** value. Monday, each.

Nashua Plaid BLANKETS

The celebrated Nashua supreme blankets; well known for their laundering and wearing qualities; all the wanted colors. 66x80-inch size. Special, **4.50** Monday, per pair, only.

Old Town Plaid BLANKETS

Genuine Old Town plaid wool blankets; guaranteed all pure virgin wool; steamed and secured to prevent shrinking. Regular 12.95 value. **11.00** Monday, per pair.

All-Wool Navy Blue FRENCH SERGE

Sponged and shrunk. This is the correct weight for new spring dresses. **1.19** 42-inch width; regular 1.75 value.

Odd Lots of Linens

Colored Border Table Damask Clearance of mill ends; satin finish; we cut any length; 60-inch width. **59c** Regular 98c value; per yard.

3.00 Crochet Bed Spreads

Of very good quality; well made **2.25** with hemmed ends. Large size.

1,000 Turkish Towels

Large size, of fine heavy quality **1.00** with blue borders. 23c value; 6 for Limit of 23c to Each Customer.

FAIRYLAND BLEACHED MUSLIN

A strong, splendid quality for undergarments, pillow cases and other similar uses. Fine, even weave; made of selected cotton yarns. Specially priced for Monday, per yard, **18 1/2c**

FANCY PRINTED SILKOLINE

Full standard quality in beautiful plain colors or attractive patterns; durable quality; 2 to 8-yard lengths; 36 inches in width. Priced for Monday's selling, at yard, **16 1/2c**

NORMANDIE SWISS VOILES

The season's most wanted and popular fabrics in a new range of colors and patterns. Guaranteed to give satisfaction. 39-inch width. Very specially priced at, per yard, **65c**

WOOL FINISHED SUITING

In plaids. A practical fabric for misses' and children's dresses, skirts and suits. 36 inches wide. Regular 98c value. **65c** Specially priced for Monday's selling, at, per yard.

The Famous Pequot SHEETS AND CASES

This brand is justly famed for its wonderful washing and wearing qualities. We offer Monday at special prices, the following items:

61x90-inch Pequot Sheets—Reg. 2.15 value. Special at, each, 1.95	61x90-inch Pequot Sheets—Reg. 2.25 value. Very special at, each, 2.05
62x36-inch Pequot Cases—Reg. 50c value; each, 45c	62x36-inch Pequot Cases—Reg. 55c value; each, 50c

NEW COTTON CHALLIS

A new range of patterns and colors; practical for comforts, coverings, linings, draperies and similar articles. 36 inches wide. Very special for Monday, per yard, **19c**

WINDSOR PLISSE CREPE

A popular and practical material for undergarments, pajamas and children's clothing. A large assortment of plain colors. Long mill lengths. Special at, per yard, **29c**

SERPENTINE CREPE

Every yard is stamped on the selvage. Shown in a variety of patterns and colors suitable for dresses, kimonos, and other apparel. Special for Monday at, per yard, **29c**

SOISETTE GINGHAM

A practical material for dresses, pajamas, underwear, shirts and draperies. Convenient mill lengths. 32-inch width. Regularly 49c yard. Special for Monday, per yard, **39c**

5,000 Yards Assorted REMNANTS

Included are percales in light and dark patterns; challies in attractive colorings; cretonnes for decorating purposes, and many other useful fabrics. **10 1/2c** Special for Monday.

Long Cloth

A beautiful, soft, mellow finish; 36-inch width. Regular **19c** 29c value; per yard.

Outing Flannel

Fancy patterns and colors; woven with a long, fleecy nap on both sides. 36-inch width; special, per yard, **25c**

Diadem Satine

A large assortment of plain colors, including black and white; 36-inch width; yd., **45c**

Bathrobe Flannel

In jacquard and floral patterns. A splendid quality for bathrobes and blankets. **35c**

Cotton Batt

3-pound stitched cotton batt made of snowy white cotton; opens out to 72x90 inches. Monday, each, **1.29**

Fine Cretonne

Floral and tapestry patterns in 3 to 12-yard lengths. 36-inch width. An exceptional **24c** value. Monday, per yard.

Outing Flannel

Apple Swiss outing flannel, standard quality; 27 inches in width. Regular **25c** value. Monday, yard, **18 1/2c**

Heavy Finished MUSLIN

An extra heavy quality, specially suited for art needle work, table cloths, napkins, nurses' uniforms and aprons. Shrunken. Regular **35c** quality; at per yard, **25c**

Omaha today is a very important factor in the agricultural, educational, industrial and financial affairs of the world. To those who will dedicate themselves to its service will come the reward of abounding success.

Know Omaha—learn the many things it offers to the world; to the great Middle West; to yourself and your family. Tell your friends about Omaha. Let your enthusiasm inspire them to be boosters for a bigger and better Omaha.

Western Newspaper Union H. H. FISH, President

A Fretful Child

is usually rundown in vitality or anemic. **SCOTT'S EMULSION** the famous white food- tonic is what every weakened child needs.

YOU CAN'T STARVE AND BE STRONG

The old theory of "diet" in treating **DIABETES** is like expecting an automobile to run without gasoline. My book, "Eat and Get Well," telling how to stop this useless starving and eat the food you need will be sent free, postpaid, to any sufferer of diabetes. Write now to M. Richards, Dept. 77, 220 W. 42nd Street, New York.