

State Training Schools Active in 4-H Club Work

Girls Have Canned 15,994 Quarts of Vegetables in Four Years Besides Other Work.

Geneva, Neb., Dec. 23.—The girls in the State Training School for Girls here have canned 15,994 quarts of vegetables, all of which have been raised in their gardens, grown 3,450 bushels of potatoes, built up a herd of purebred Hampshire hogs, and produced 5,248 dozen eggs, 2,800 chickens, 100 geese, 128 ducks, and 36 turkeys in the last four years...

During the four years, the most popular club has been the canning club. The girls have raised the vegetables in their garden club work and canned them in their modern canning kitchen, which was planned and built under the direction of the agricultural extension service.

The farm bureau elected officers as follows: J. O. Henry, Cambridge, president; D. H. Hutchinson, Arapahoe, vice president; A. G. Gerd, Stamford, secretary-treasurer; A. L. Christian and T. A. Mackey, Wilsonville, directors.

Aurora Farm Bureau Meet Names Officers for 1924. Aurora, Neb., Dec. 23.—At the annual meeting of the farm bureau members Wednesday, the following officers were elected for the coming year: President, Leonard Johnson of Marquette; vice president, Levi Henderson, Hampton; secretary, B. B. Heilmann, Phillips; treasurer, Edwin Heinefeld, Aurora; delegates to the annual meeting of the farm bureau...

Farmers' Union Notes. Officers are named. Nibrah—An oyster supper, in connection with the annual meeting of the Farmers' Union at Nibrah, Neb., was held at the home of Mrs. D. L. DeLong, secretary-treasurer, and E. L. Hunt, legislative committee member...

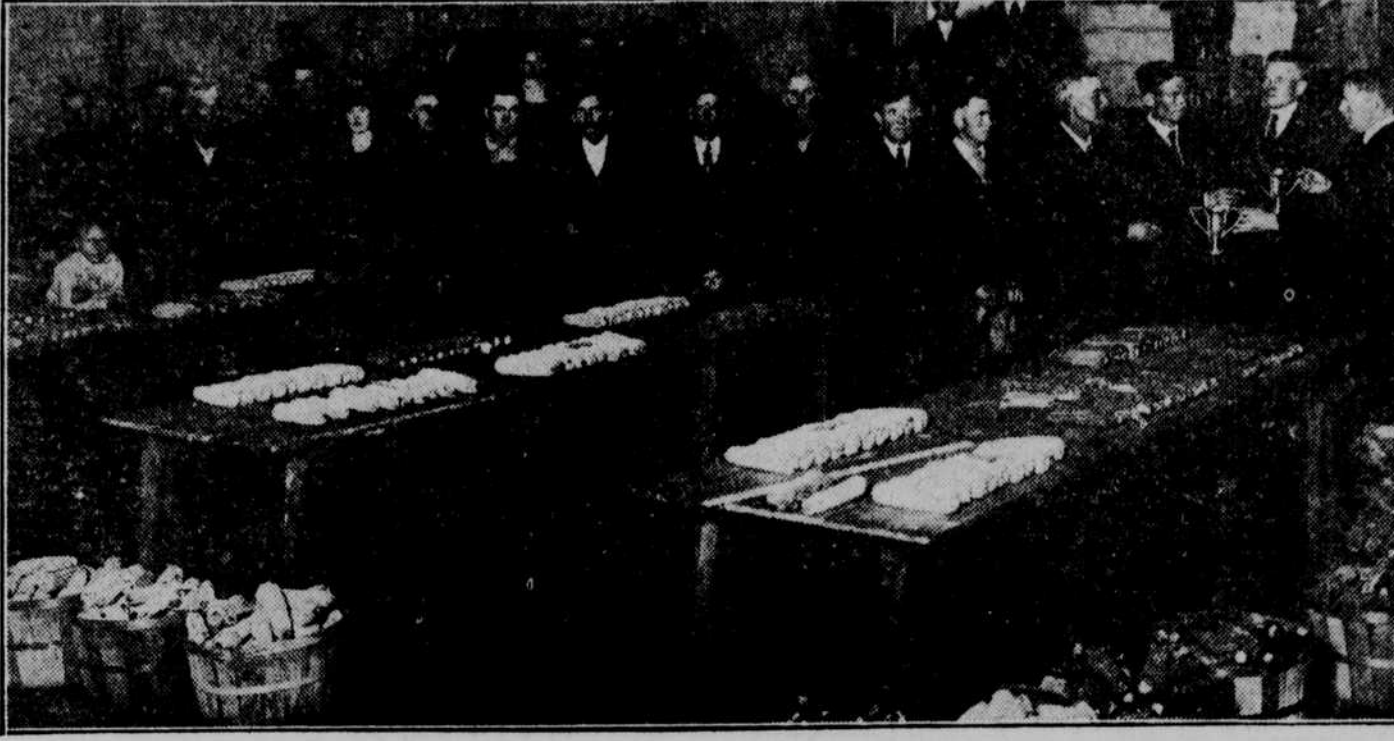
Want Larger Membership. The annual convention of the Otoe County Farmers Union was held at the annual convention held in this place, consisting of Henry Johnson, president, A. H. DeLong, secretary-treasurer, and E. L. Hunt, legislative committee member...

Officers Will Speak. At the annual meeting of the Otoe County Farmers Union, held at the home of Mrs. D. L. DeLong, secretary-treasurer, and E. L. Hunt, legislative committee member...

Saline County Convention. The convention we have ever held was the statement of President George Zimmerman in regard to the annual convention of the Saline County Farmers Union...

Business Increased. A volume of business amounting to \$106,165.57 was transacted by the Farmers Union Co-operative association here in the fiscal year 1923, just closed...

Good Yields Reported at Furnas County Corn Show



Beaver City, Neb., Dec. 23.—A corn show was held by the Furnas County Farm bureau at the auditorium, Beaver City, W. R. Nicholson of Beaver City was winner of the bottom land contest, having a field of 60 ears yielding 107 bushels to the acre...

Agriculture Week Meetings Planned

Three Conventions Will Hold Sessions in Lincoln, January 8 to 10.

Lincoln, Dec. 23.—The Nebraska State Dairyman's association, the Nebraska Farm Equipment association and the Nebraska Milk Goat association will be three of the organizations to meet here during the Nebraska Organized Agriculture week, January 8 to 10, it was announced at the state agricultural college, where the meetings are to be held.

The two topics, "Why the Purebred?" and "Care of Milk and Cream on the Farm," will complete the morning program of the dairymen's association, January 9, "Why We Need Better Dairy Cows," "Dairy Marketing," a demonstration and a play will be features of the afternoon.

Officers are named. Nibrah—An oyster supper, in connection with the annual meeting of the Farmers' Union at Nibrah, Neb., was held at the home of Mrs. D. L. DeLong, secretary-treasurer, and E. L. Hunt, legislative committee member...

Want Larger Membership. The annual convention of the Otoe County Farmers Union was held at the annual convention held in this place, consisting of Henry Johnson, president, A. H. DeLong, secretary-treasurer, and E. L. Hunt, legislative committee member...

Officers Will Speak. At the annual meeting of the Otoe County Farmers Union, held at the home of Mrs. D. L. DeLong, secretary-treasurer, and E. L. Hunt, legislative committee member...

Saline County Convention. The convention we have ever held was the statement of President George Zimmerman in regard to the annual convention of the Saline County Farmers Union...

Business Increased. A volume of business amounting to \$106,165.57 was transacted by the Farmers Union Co-operative association here in the fiscal year 1923, just closed...

With the County Agents

The Douglas County Cow Testing association has just completed the fifth month's test. It was very noticeable that members feeding well-balanced rations had the highest and most economical results.

The highest milk-producing cow was a grade Holstein owned by Walter Tozer, Elkhorn. Her record showed 1,800 pounds of milk, 57.6 pounds of butterfat and a net profit above cost of feed of \$33.45.

Two dairy meetings were held last week for the benefit of members of the Douglas County Cow Testing association and others. M. N. Lawrison, extension specialist in dairying, outlined things to be kept in mind in the selection of dairy herd.

Geneva—Discussions, based on the experiences of farmers present at the annual Farm Bureau meeting, held here, who had shipped eggs co-operatively, brought out the points that the greatest profit from eggs and poultry come from standard bred flocks, from properly graded eggs and from a careful study of the existing and probable future market conditions.

Wahoo—About 60 persons attended the achievement day program of the Weston Knotty Rope club and witnessed the speeches and demonstrations given by the club members.

Blair—It cost \$2,474 to conduct the business of the Washington County Farm Bureau and the county agricultural extension agent during 1923, the county agent's report made to the annual meeting of the farm bureau and distributed from the farm bureau shows.

Syracuse—Butchering and meat cutting and canning demonstrations, held on two farms, one near here and the other south of Nebraska City, were attended by about 75 farmers and their wives.

Dakota City—Twenty-six farmers attended the two-day gasoline engine schools held at the farm of Peter Sorenson, Fiddlers Creek, and that of Frank Peters, in Emerson precinct.

Strawberry Beds Need Winter Mulch

Agriculture College Tells How to Prevent Loss of Moisture in Bulletin.

Lincoln, Dec. 23.—Methods of saving the strawberry beds from loss of moisture during the winter and consequently small yields, were given in a bulletin issued by the state agricultural college.

Geneva—Discussions, based on the experiences of farmers present at the annual Farm Bureau meeting, held here, who had shipped eggs co-operatively, brought out the points that the greatest profit from eggs and poultry come from standard bred flocks, from properly graded eggs and from a careful study of the existing and probable future market conditions.

Wahoo—About 60 persons attended the achievement day program of the Weston Knotty Rope club and witnessed the speeches and demonstrations given by the club members.

Blair—It cost \$2,474 to conduct the business of the Washington County Farm Bureau and the county agricultural extension agent during 1923, the county agent's report made to the annual meeting of the farm bureau and distributed from the farm bureau shows.

Syracuse—Butchering and meat cutting and canning demonstrations, held on two farms, one near here and the other south of Nebraska City, were attended by about 75 farmers and their wives.

Dakota City—Twenty-six farmers attended the two-day gasoline engine schools held at the farm of Peter Sorenson, Fiddlers Creek, and that of Frank Peters, in Emerson precinct.

Dunbar—Cost account records on corn production lent by three farm owners in Otoe county this year show that on the four-acre field of John Gess, the total production cost was 29 cents per bushel; on a 20-acre field the cost was 20 cents per bushel, and on a 17-acre field the cost was 35 cents per bushel.

Omaha Produce

Omaha, Dec. 23. BUTTER.—Local market price to retailers: Extras, 30c; extra, in 50-lb. tubs, 25c; standard, 25c; 100-lb. tubs, 25c. Creamery—Local market price to retailers: Extras, 30c; extra, in 50-lb. tubs, 25c; standard, 25c; 100-lb. tubs, 25c.

Omaha, Dec. 23. BUTTER.—Local market price to retailers: Extras, 30c; extra, in 50-lb. tubs, 25c; standard, 25c; 100-lb. tubs, 25c. Creamery—Local market price to retailers: Extras, 30c; extra, in 50-lb. tubs, 25c; standard, 25c; 100-lb. tubs, 25c.

Omaha, Dec. 23. BUTTER.—Local market price to retailers: Extras, 30c; extra, in 50-lb. tubs, 25c; standard, 25c; 100-lb. tubs, 25c. Creamery—Local market price to retailers: Extras, 30c; extra, in 50-lb. tubs, 25c; standard, 25c; 100-lb. tubs, 25c.

Omaha, Dec. 23. BUTTER.—Local market price to retailers: Extras, 30c; extra, in 50-lb. tubs, 25c; standard, 25c; 100-lb. tubs, 25c. Creamery—Local market price to retailers: Extras, 30c; extra, in 50-lb. tubs, 25c; standard, 25c; 100-lb. tubs, 25c.

Omaha, Dec. 23. BUTTER.—Local market price to retailers: Extras, 30c; extra, in 50-lb. tubs, 25c; standard, 25c; 100-lb. tubs, 25c. Creamery—Local market price to retailers: Extras, 30c; extra, in 50-lb. tubs, 25c; standard, 25c; 100-lb. tubs, 25c.

Omaha, Dec. 23. BUTTER.—Local market price to retailers: Extras, 30c; extra, in 50-lb. tubs, 25c; standard, 25c; 100-lb. tubs, 25c. Creamery—Local market price to retailers: Extras, 30c; extra, in 50-lb. tubs, 25c; standard, 25c; 100-lb. tubs, 25c.

Omaha, Dec. 23. BUTTER.—Local market price to retailers: Extras, 30c; extra, in 50-lb. tubs, 25c; standard, 25c; 100-lb. tubs, 25c. Creamery—Local market price to retailers: Extras, 30c; extra, in 50-lb. tubs, 25c; standard, 25c; 100-lb. tubs, 25c.

Omaha, Dec. 23. BUTTER.—Local market price to retailers: Extras, 30c; extra, in 50-lb. tubs, 25c; standard, 25c; 100-lb. tubs, 25c. Creamery—Local market price to retailers: Extras, 30c; extra, in 50-lb. tubs, 25c; standard, 25c; 100-lb. tubs, 25c.

Omaha, Dec. 23. BUTTER.—Local market price to retailers: Extras, 30c; extra, in 50-lb. tubs, 25c; standard, 25c; 100-lb. tubs, 25c. Creamery—Local market price to retailers: Extras, 30c; extra, in 50-lb. tubs, 25c; standard, 25c; 100-lb. tubs, 25c.

Financial

By Associated Press. New York, Dec. 23.—Evidences of good holiday trade and a coincident decline in activity in the financing of the market for the last week in business. Retailers declared that although the usual seasonal buying had been retarded by the conclusion is confirmed by the grant deposits which have been made for currency and gold pieces.

By Associated Press. New York, Dec. 23.—Investment buying of bonds showed up considerably during the week, although at least one observer continued firm and new offerings found ready absorption. This was accepted by bankers and traders as a natural pre-holiday situation.

By Associated Press. New York, Dec. 23.—Investment buying of bonds showed up considerably during the week, although at least one observer continued firm and new offerings found ready absorption. This was accepted by bankers and traders as a natural pre-holiday situation.

By Associated Press. New York, Dec. 23.—Investment buying of bonds showed up considerably during the week, although at least one observer continued firm and new offerings found ready absorption. This was accepted by bankers and traders as a natural pre-holiday situation.

By Associated Press. New York, Dec. 23.—Investment buying of bonds showed up considerably during the week, although at least one observer continued firm and new offerings found ready absorption. This was accepted by bankers and traders as a natural pre-holiday situation.

By Associated Press. New York, Dec. 23.—Investment buying of bonds showed up considerably during the week, although at least one observer continued firm and new offerings found ready absorption. This was accepted by bankers and traders as a natural pre-holiday situation.

By Associated Press. New York, Dec. 23.—Investment buying of bonds showed up considerably during the week, although at least one observer continued firm and new offerings found ready absorption. This was accepted by bankers and traders as a natural pre-holiday situation.

By Associated Press. New York, Dec. 23.—Investment buying of bonds showed up considerably during the week, although at least one observer continued firm and new offerings found ready absorption. This was accepted by bankers and traders as a natural pre-holiday situation.

By Associated Press. New York, Dec. 23.—Investment buying of bonds showed up considerably during the week, although at least one observer continued firm and new offerings found ready absorption. This was accepted by bankers and traders as a natural pre-holiday situation.

By Associated Press. New York, Dec. 23.—Evidences of good holiday trade and a coincident decline in activity in the financing of the market for the last week in business. Retailers declared that although the usual seasonal buying had been retarded by the conclusion is confirmed by the grant deposits which have been made for currency and gold pieces.

By Associated Press. New York, Dec. 23.—Investment buying of bonds showed up considerably during the week, although at least one observer continued firm and new offerings found ready absorption. This was accepted by bankers and traders as a natural pre-holiday situation.

By Associated Press. New York, Dec. 23.—Investment buying of bonds showed up considerably during the week, although at least one observer continued firm and new offerings found ready absorption. This was accepted by bankers and traders as a natural pre-holiday situation.

By Associated Press. New York, Dec. 23.—Investment buying of bonds showed up considerably during the week, although at least one observer continued firm and new offerings found ready absorption. This was accepted by bankers and traders as a natural pre-holiday situation.

By Associated Press. New York, Dec. 23.—Investment buying of bonds showed up considerably during the week, although at least one observer continued firm and new offerings found ready absorption. This was accepted by bankers and traders as a natural pre-holiday situation.

By Associated Press. New York, Dec. 23.—Investment buying of bonds showed up considerably during the week, although at least one observer continued firm and new offerings found ready absorption. This was accepted by bankers and traders as a natural pre-holiday situation.

By Associated Press. New York, Dec. 23.—Investment buying of bonds showed up considerably during the week, although at least one observer continued firm and new offerings found ready absorption. This was accepted by bankers and traders as a natural pre-holiday situation.

By Associated Press. New York, Dec. 23.—Investment buying of bonds showed up considerably during the week, although at least one observer continued firm and new offerings found ready absorption. This was accepted by bankers and traders as a natural pre-holiday situation.

By Associated Press. New York, Dec. 23.—Investment buying of bonds showed up considerably during the week, although at least one observer continued firm and new offerings found ready absorption. This was accepted by bankers and traders as a natural pre-holiday situation.

New York Bonds

By Associated Press. New York, Dec. 23.—Investment buying of bonds showed up considerably during the week, although at least one observer continued firm and new offerings found ready absorption. This was accepted by bankers and traders as a natural pre-holiday situation.

By Associated Press. New York, Dec. 23.—Investment buying of bonds showed up considerably during the week, although at least one observer continued firm and new offerings found ready absorption. This was accepted by bankers and traders as a natural pre-holiday situation.

By Associated Press. New York, Dec. 23.—Investment buying of bonds showed up considerably during the week, although at least one observer continued firm and new offerings found ready absorption. This was accepted by bankers and traders as a natural pre-holiday situation.

By Associated Press. New York, Dec. 23.—Investment buying of bonds showed up considerably during the week, although at least one observer continued firm and new offerings found ready absorption. This was accepted by bankers and traders as a natural pre-holiday situation.

By Associated Press. New York, Dec. 23.—Investment buying of bonds showed up considerably during the week, although at least one observer continued firm and new offerings found ready absorption. This was accepted by bankers and traders as a natural pre-holiday situation.

By Associated Press. New York, Dec. 23.—Investment buying of bonds showed up considerably during the week, although at least one observer continued firm and new offerings found ready absorption. This was accepted by bankers and traders as a natural pre-holiday situation.

By Associated Press. New York, Dec. 23.—Investment buying of bonds showed up considerably during the week, although at least one observer continued firm and new offerings found ready absorption. This was accepted by bankers and traders as a natural pre-holiday situation.

By Associated Press. New York, Dec. 23.—Investment buying of bonds showed up considerably during the week, although at least one observer continued firm and new offerings found ready absorption. This was accepted by bankers and traders as a natural pre-holiday situation.

Updike Consignment Service. ITS MEANING TO SHIPPERS: TOP PRICES. QUICK RETURNS. With Check for Balance Due on Each Car. A CAREFUL HANDLING OF LOSS AND DELAY CLAIMS. A GUARANTEE OF SATISFACTION. Telephone AT lantic 6312.

Updike Grain Corporation. "A Reliable Consignment House". OMAHA. Kansas City. Chicago. Milwaukee.

The Home Buying Problem Is Solved! Illustration of a house and a person.

Every day in the year somebody solves the home buying problem. It is not a problem arising only at seasonal intervals. It is an abiding one.

Some people "get ready" to buy homes in mid-winter; some find themselves ready to decide the matter long before the termination of their present leaseholds.

Owners of property find the "out-of-season" period just as fruitful as are the periods just preceding the "moving seasons."

The Omaha Morning Bee. THE EVENING BEE.