

In the Path of Wind and Water

THE OMAHA SUNDAY BEE—ALCOGRAVURE SECTION

SOME STRIKING ILLUSTRATIONS OF THE DAMAGE DONE IN NEBRASKA AND COUNCIL BLUFFS BY CLOUDBURST AND TWISTER
ALL PHOTOS BY DEWELL



Where a Council Bluffs home once stood.



A branch of a tree, broken off, was driven so hard by the wind it pierced the roof of this house and penetrated clear through into a bedroom. Near the foundation a piece of timber pierced the wall of the house and through the plaster inside.



Trees were torn up by the roots by the twister.



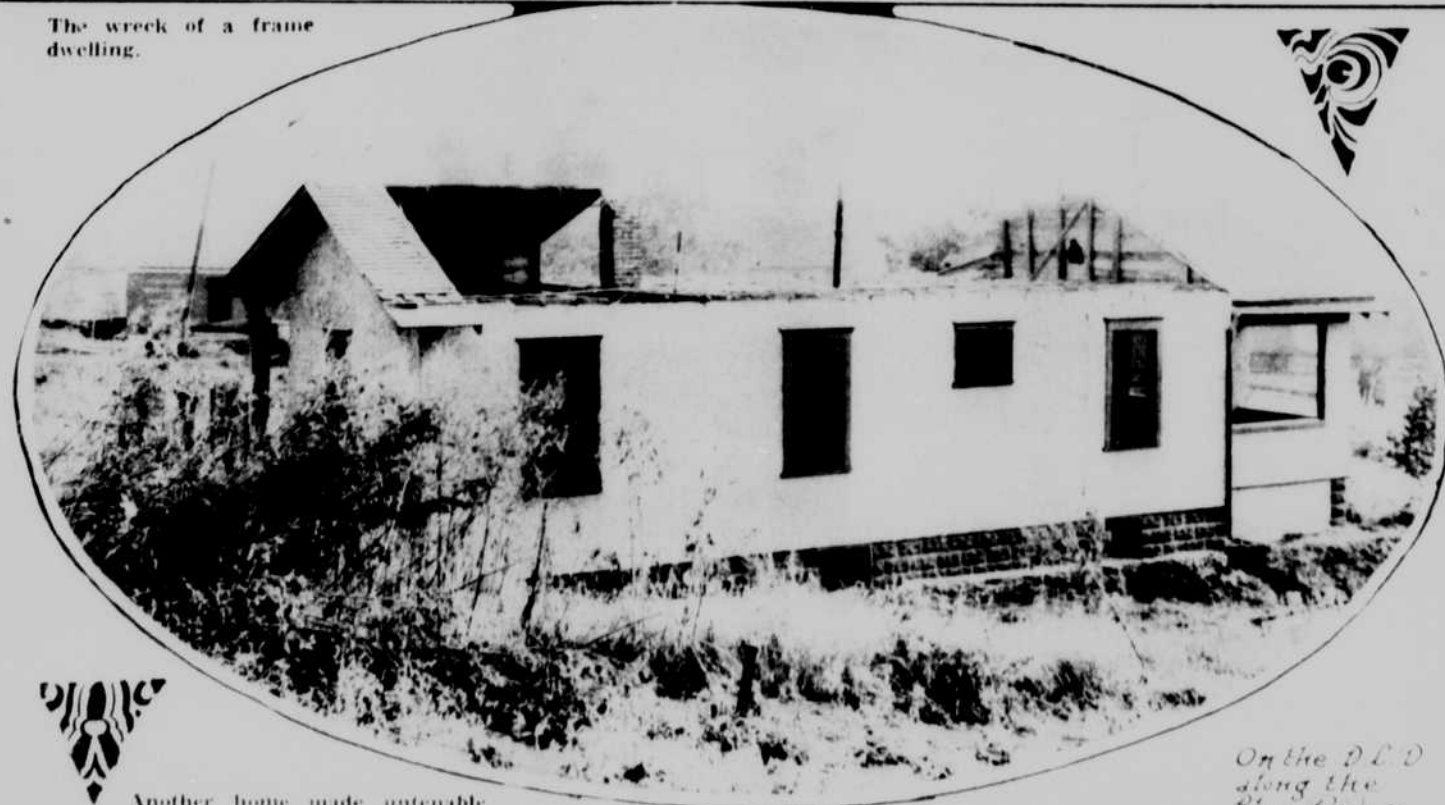
The foundation of this house in Council Bluffs was completely torn out by wind and water.



The wreck of a frame dwelling.



Nothing left but kindling wood



Another home made untenable



On the P.E.D. along the Blue River