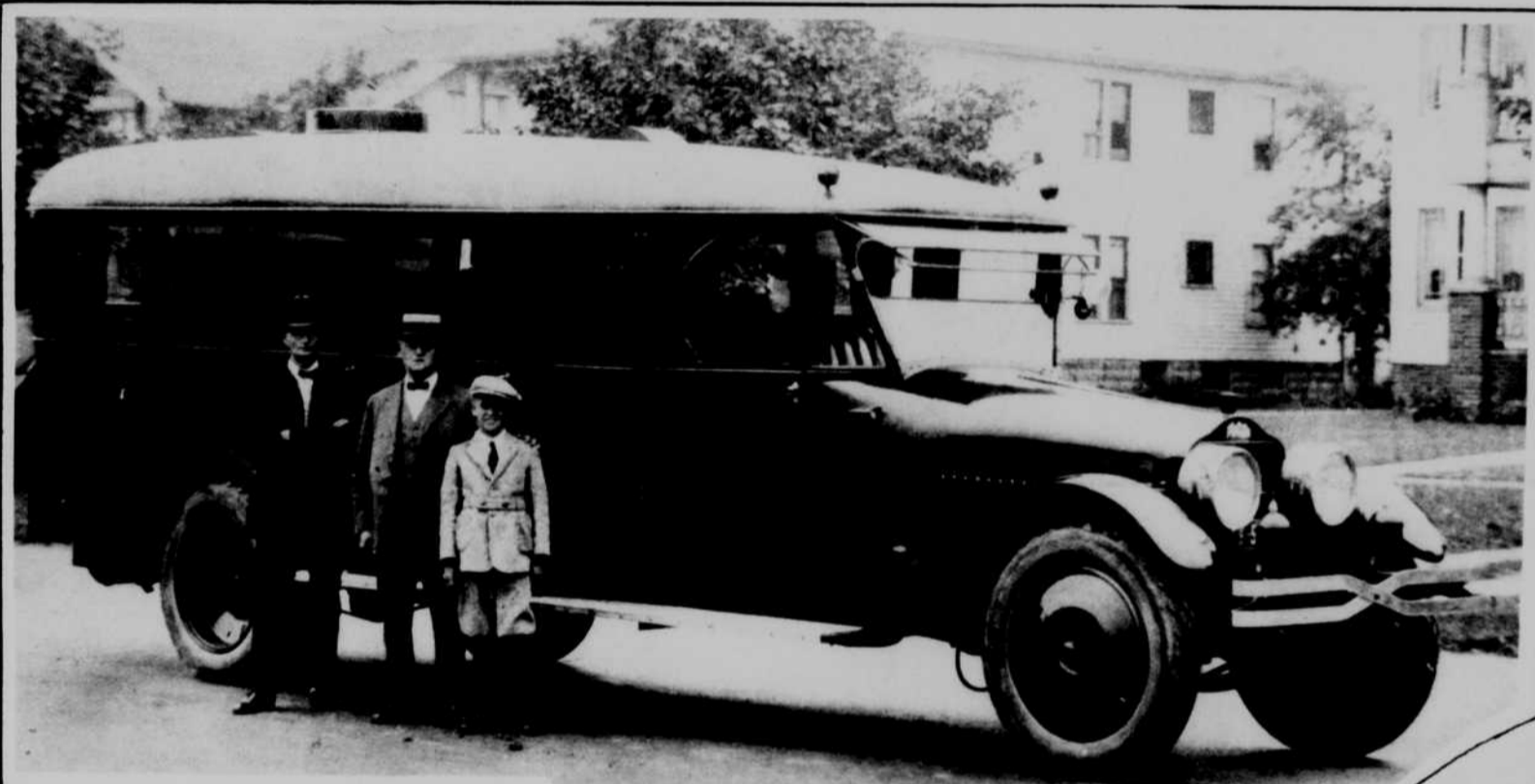




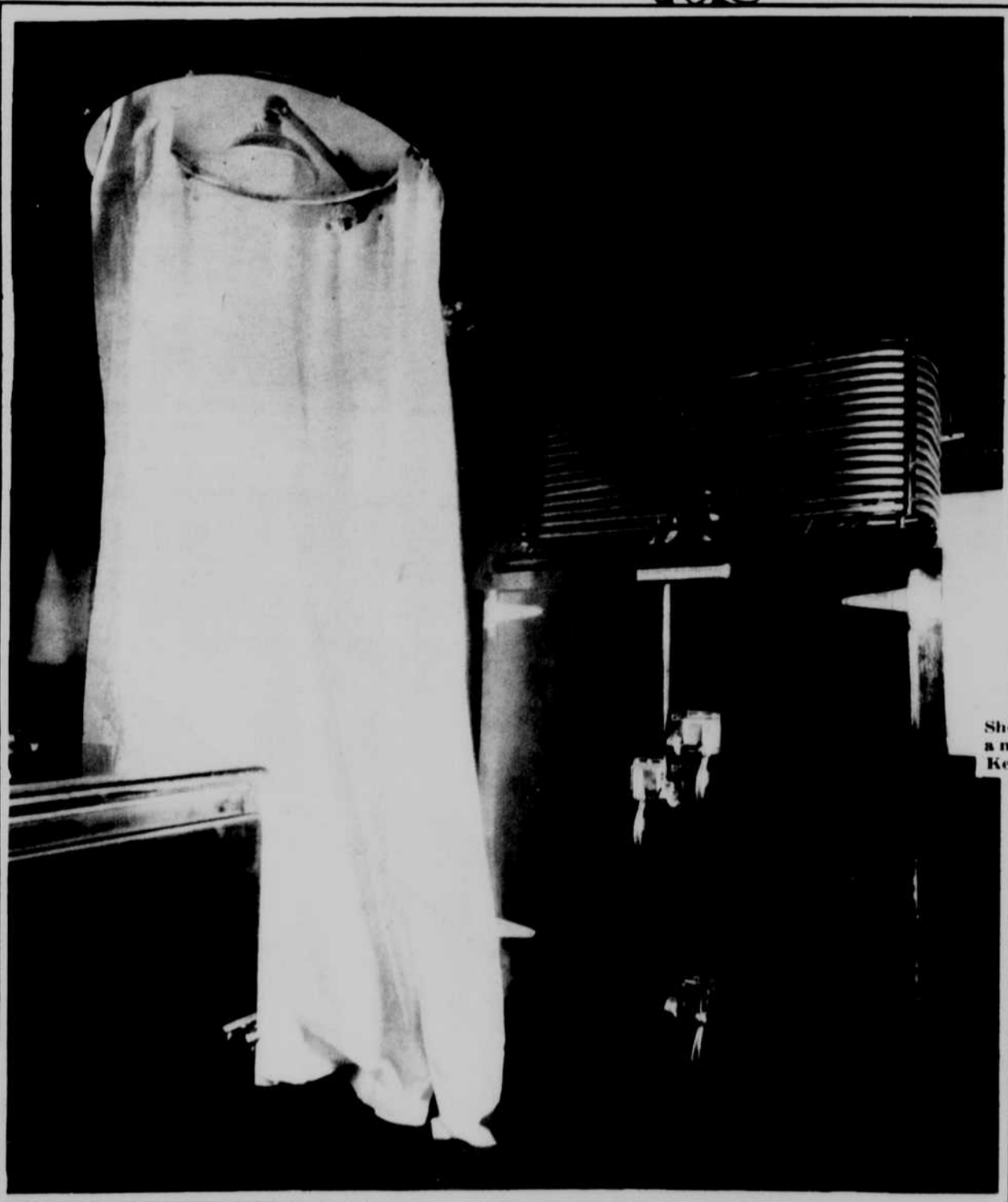
This year's run of salmon on the north Pacific coast has brought already more than 5,000,000 cases (24,000,000 cans). The fish run in enormous schools into traps which catch as many as 30,000 in one day.



One of the prettiest country clubs in Nebraska is the Aurora Country club. Here is a picture of the club house and a view of part of the nine-hole golf course.



W. K. Kellogg (center), the cereal king of Battle Creek, Mich., with his son and grandson, soon is to visit every state capital in the United States in this 11,000-pound "land cruiser," which is equipped with adjustable arm chairs, Pullman berths, radio, lavatory, ice machine, shower bath and electric kitchen.



Shower bath, ice machine and refrigerator in the Kellogg "land cruiser."



How the comfortable arm chairs in the Kellogg "land cruiser" are converted into Pullman berths.



In the footsteps of St. John. Sailors from United States destroyers operating in European waters visit the Island of Patmos. It is on this island that St. John wrote the Book of Revelations. On this island is the Greek monastery famous for its rare collection of religious relics, many said to date from the time of Christ.



Speed. This is the type of airplane that travels 250 miles an hour. Think of it—Omaha to Kansas City in less than an hour. The machine is one of the new navy Curtiss racers.

