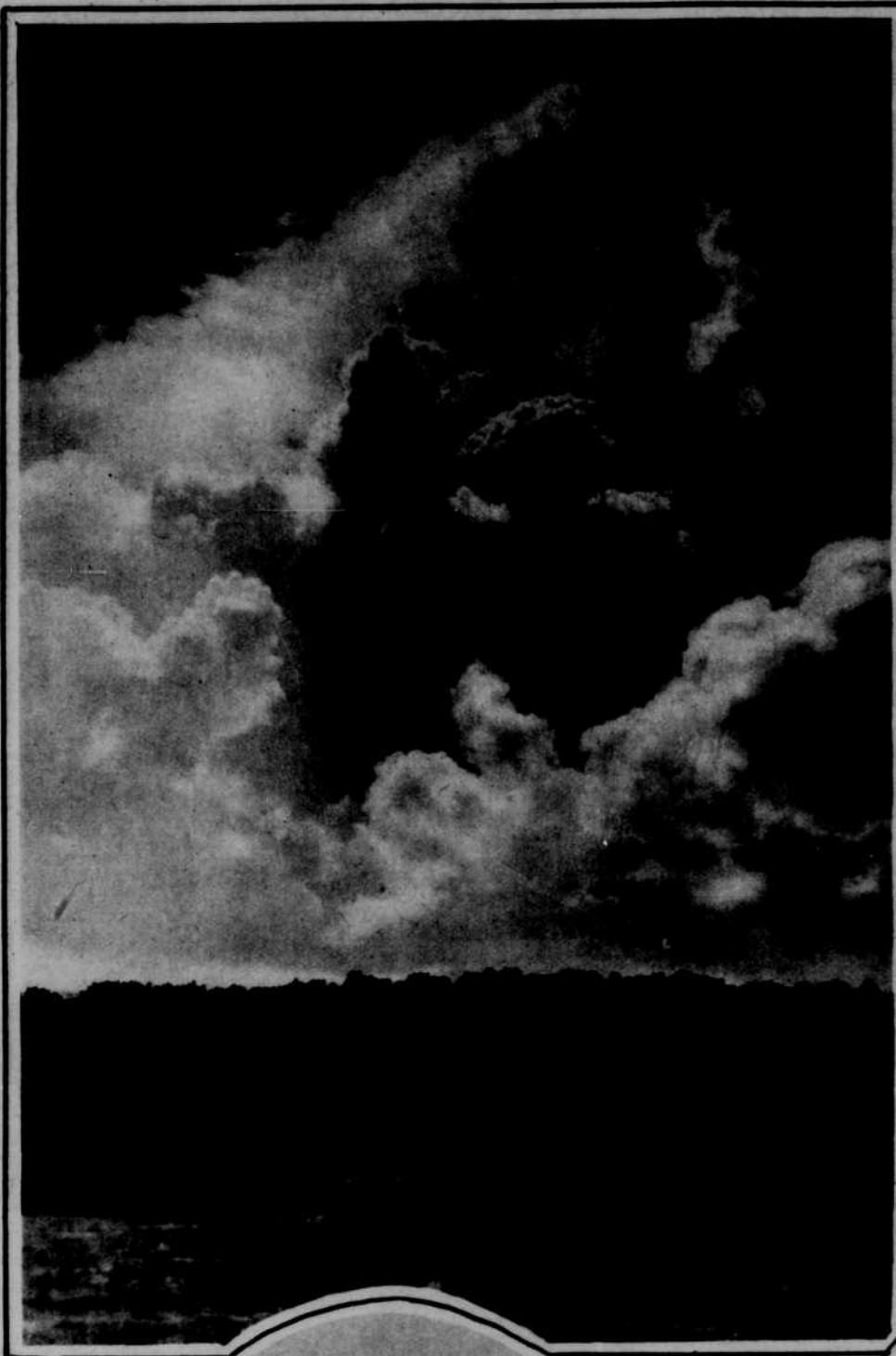


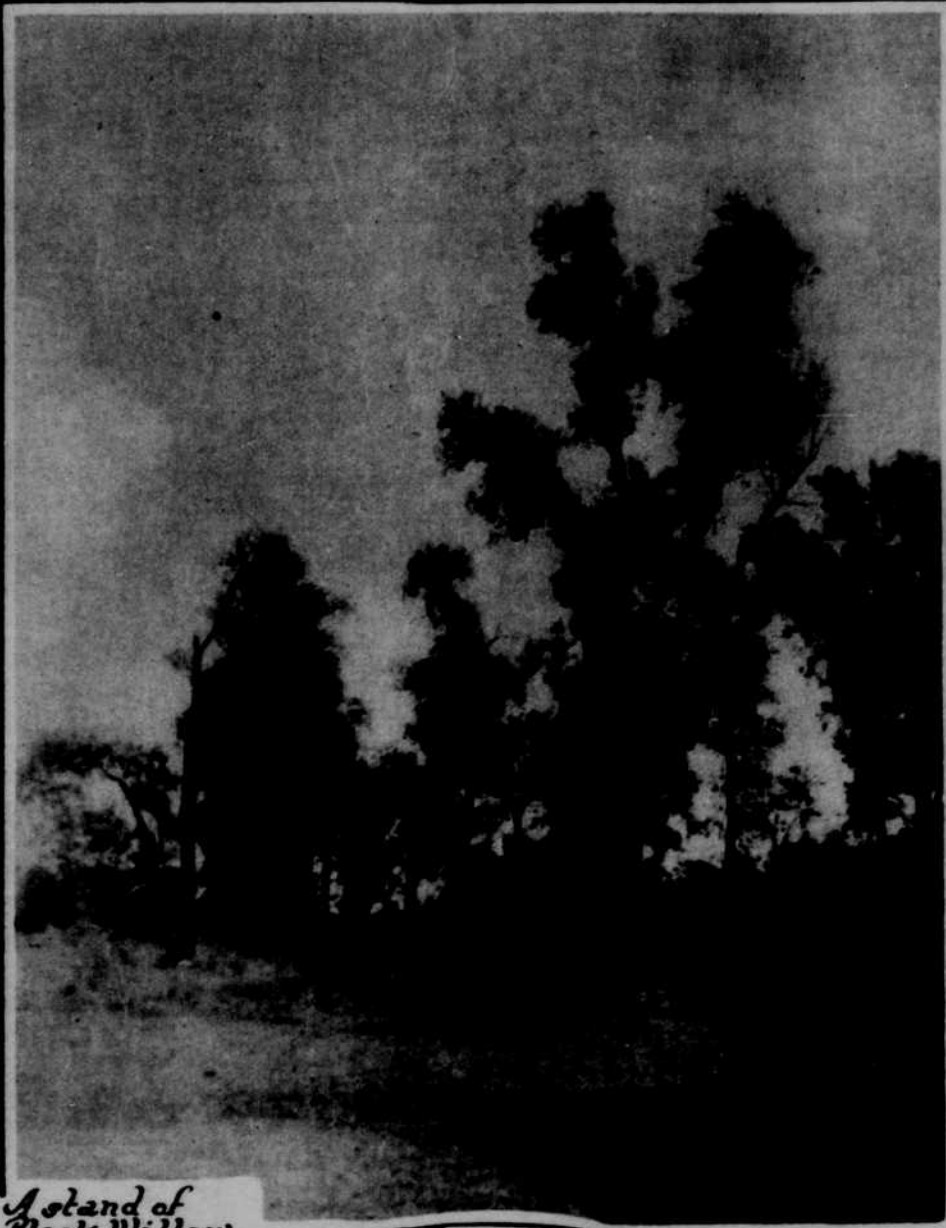
Nebraska Trees

THE OMAHA SUNDAY BEE—ALCOGRAVURE SECTION

PHOTOGRAPHS BY
GATCHELL



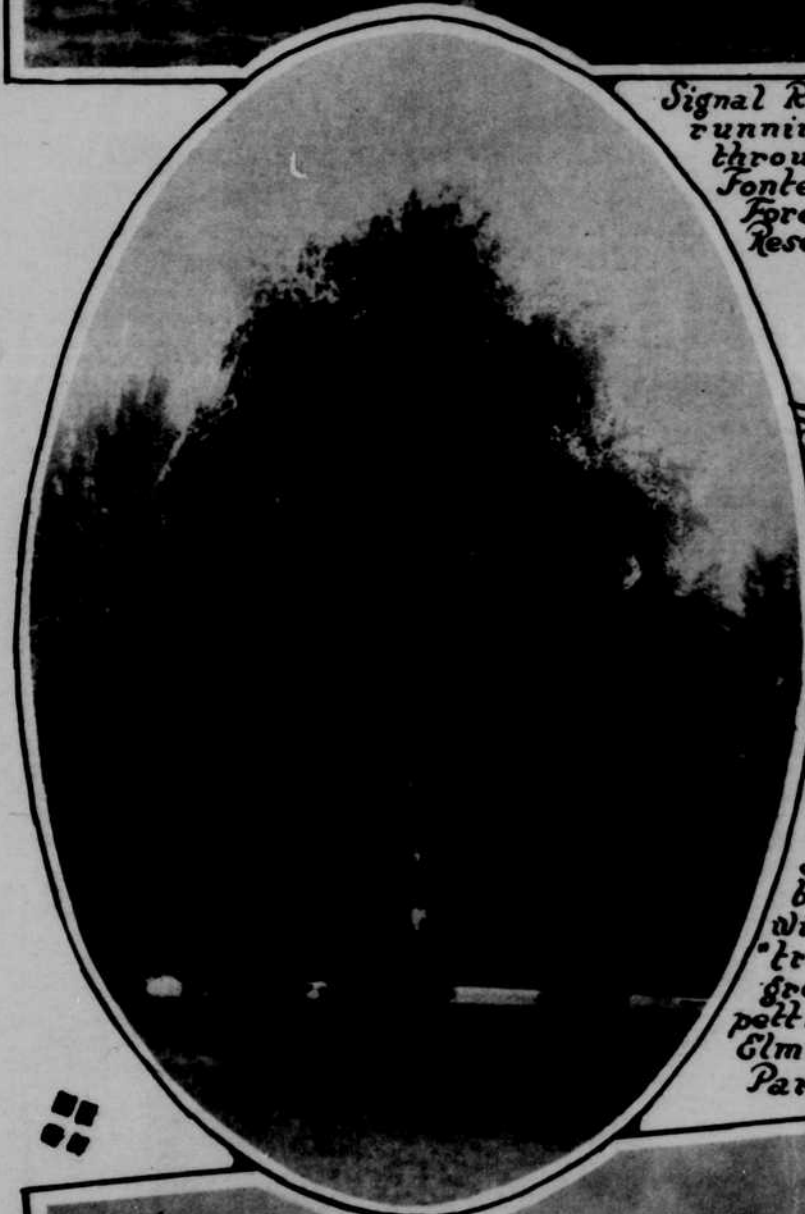
Signal Ridge
running
through
Fontenelle
Forest
Reserve



A stand of
Black Willow,
Fontenelle
Forest



Sandbar Willow
poplar, and
Cottonwood along
the river,
Fontenelle
Forest



Silver
birch
with its
"trailing
green
pelticoids,"
Elmwood
Park.



Cedars,
spruce
and fir,
strangers from
the northwest in
Elmwood
Park



Ash
saplings,
Fontenelle
Forest



Kentucky Coffee Bean
and Elm, Elmwood Park



Box elders, sometimes called Ash-leafed Maple,
Fontenelle Forest.



Sandbar Willow loves the
river banks, Fontenelle Forest.