

Omaha from the Air



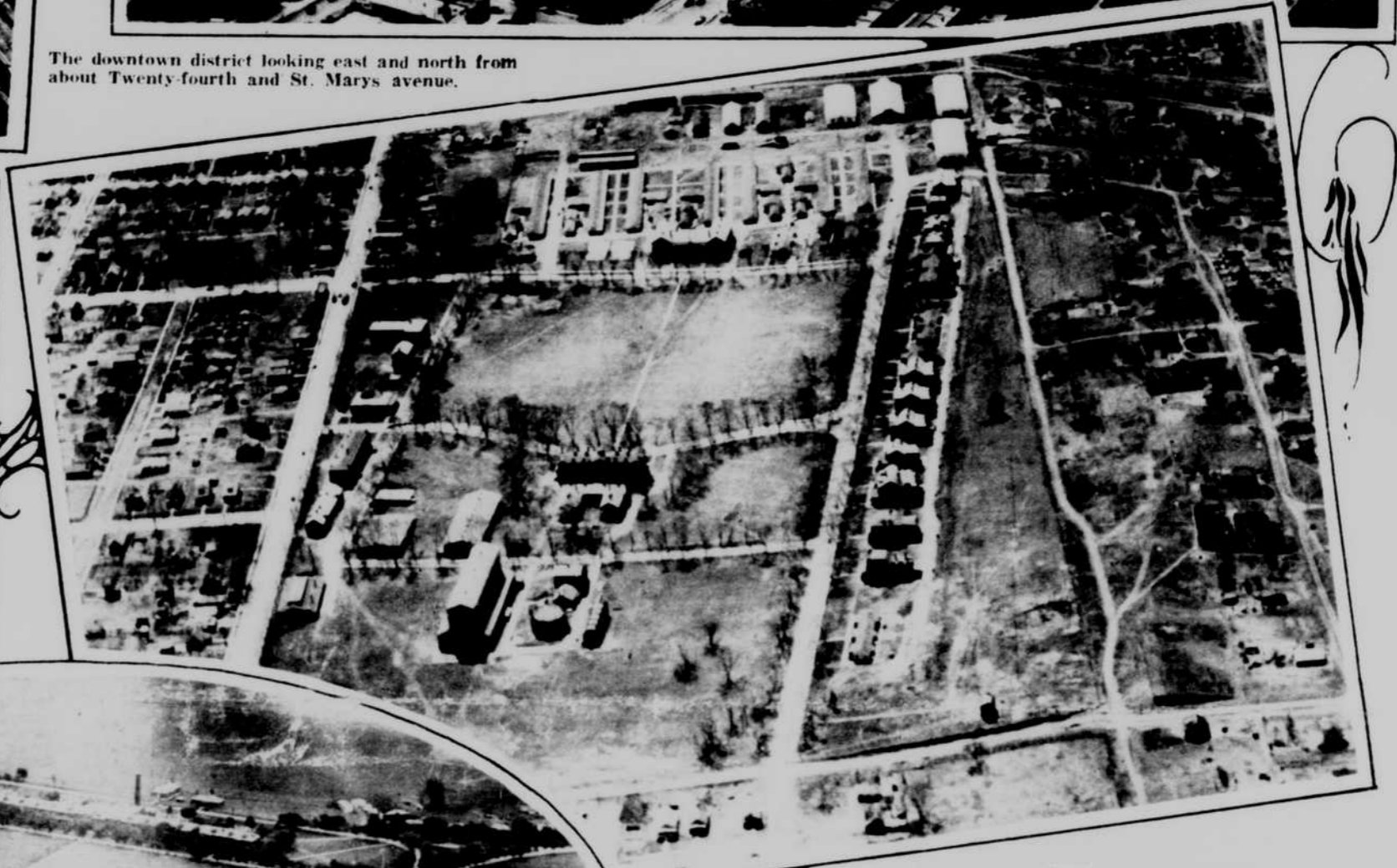
The smelter and the Douglas street bridge over the Missouri.



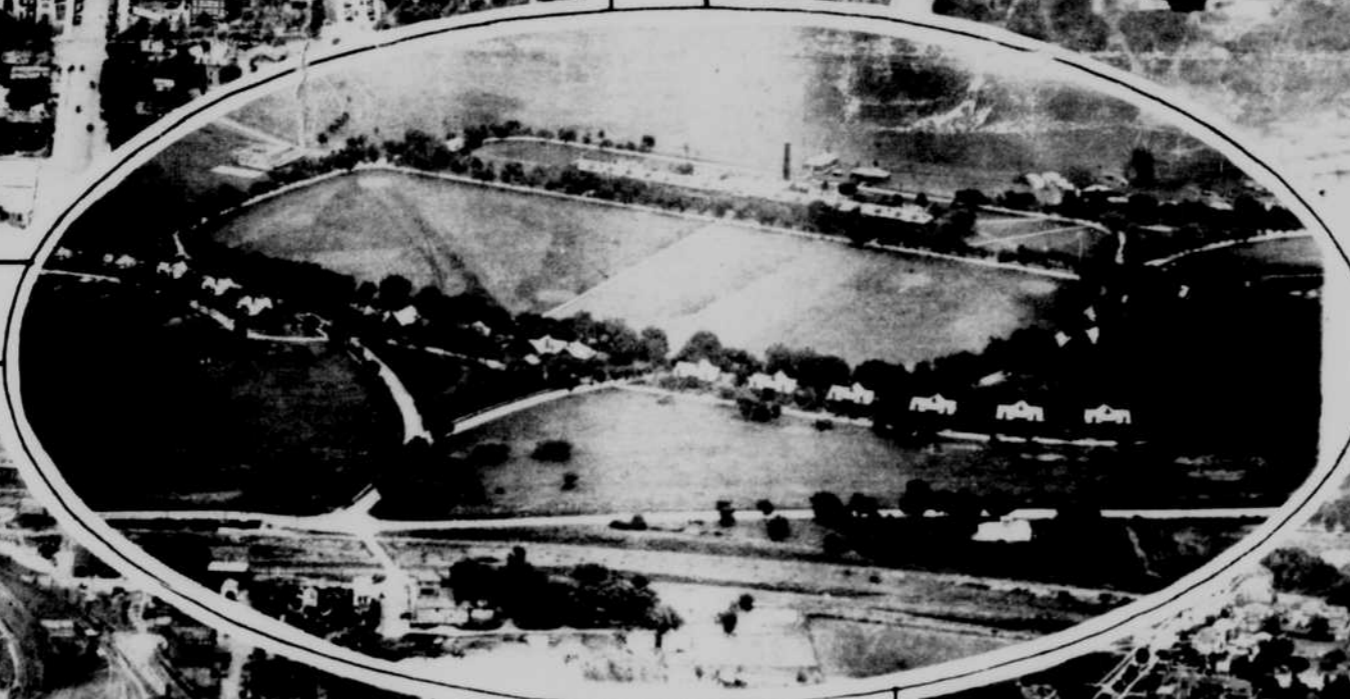
The downtown district looking east and north from about Twenty-fourth and St. Marys avenue.



The downtown district looking south. Fifteenth, Sixteenth, Seventeenth, Eighteenth, Nineteenth and Twentieth streets are easily distinguishable.



An army post within the city—Fort Omaha. A better indication of just how large a post Fort Omaha is may be obtained from the air than merely by passing by on a street car.



Fort Crook looks more like a summer resort than the home of the Seventeenth infantry when your view is from above.



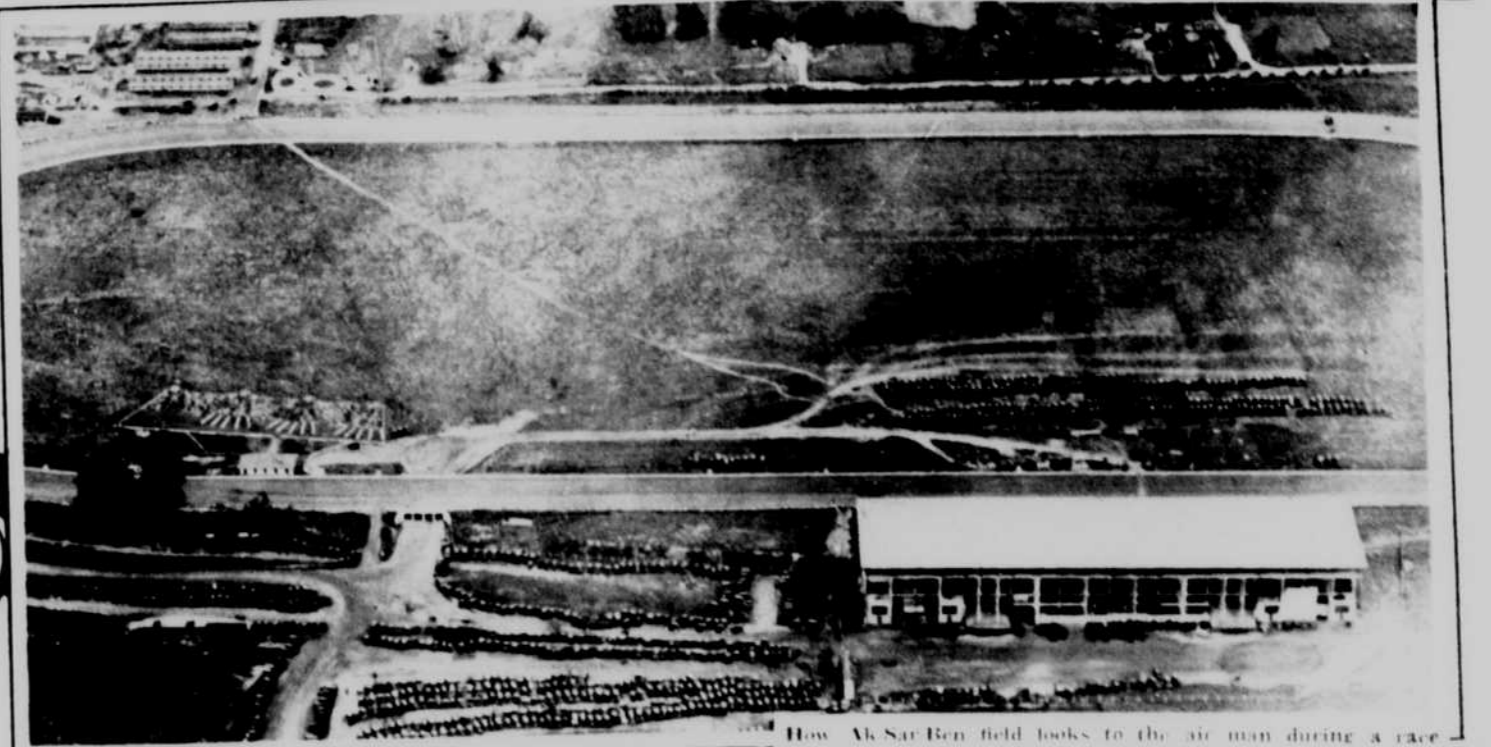
The railroad yards and the Burlington and Union stations. The Tenth, Eleventh and Sixteenth street viaducts also are easily identified.



A view of the residence district, looking south from Fortieth and Cuming streets. St. Cecilia's cathedral is in the foreground.



A general view of the packing houses and the stock yards.



How Ak-Sar-Ben field looks to the air man during a race meeting.

