

Pride Is Blamed for R. B. Wallace Taking Own Life

Financial Worries Also Mentioned—Funeral Services Will Be Held Saturday.

Funeral services for Robert B. Wallace will be held Saturday afternoon at 3, in the home at 37 Bluff street.

Financial worries and pride were said by friends of Robert B. Wallace to be the cause of his suicide Wednesday afternoon.

Wallace was known to have mortgaged his home for \$8,000 and to have ordered contractors to work on a number of new homes for his firm to cease operations indefinitely.

Below is a close view of a cornstalk at the side of the road through which it is believed the fatal bullet passed after piercing Wallace's head.

The bullet hole in the cornstalk is plainly visible.

Below is a close view of a cornstalk at the side of the road through which it is believed the fatal bullet passed after piercing Wallace's head.

The bullet hole in the cornstalk is plainly visible.

Below is a close view of a cornstalk at the side of the road through which it is believed the fatal bullet passed after piercing Wallace's head.

The bullet hole in the cornstalk is plainly visible.

Below is a close view of a cornstalk at the side of the road through which it is believed the fatal bullet passed after piercing Wallace's head.

The bullet hole in the cornstalk is plainly visible.

Below is a close view of a cornstalk at the side of the road through which it is believed the fatal bullet passed after piercing Wallace's head.

The bullet hole in the cornstalk is plainly visible.

Below is a close view of a cornstalk at the side of the road through which it is believed the fatal bullet passed after piercing Wallace's head.

The bullet hole in the cornstalk is plainly visible.

Below is a close view of a cornstalk at the side of the road through which it is believed the fatal bullet passed after piercing Wallace's head.

The bullet hole in the cornstalk is plainly visible.

Below is a close view of a cornstalk at the side of the road through which it is believed the fatal bullet passed after piercing Wallace's head.

The bullet hole in the cornstalk is plainly visible.

Below is a close view of a cornstalk at the side of the road through which it is believed the fatal bullet passed after piercing Wallace's head.

The bullet hole in the cornstalk is plainly visible.

Below is a close view of a cornstalk at the side of the road through which it is believed the fatal bullet passed after piercing Wallace's head.

The bullet hole in the cornstalk is plainly visible.

Below is a close view of a cornstalk at the side of the road through which it is believed the fatal bullet passed after piercing Wallace's head.

The bullet hole in the cornstalk is plainly visible.

Below is a close view of a cornstalk at the side of the road through which it is believed the fatal bullet passed after piercing Wallace's head.

The bullet hole in the cornstalk is plainly visible.

Below is a close view of a cornstalk at the side of the road through which it is believed the fatal bullet passed after piercing Wallace's head.

The bullet hole in the cornstalk is plainly visible.

Below is a close view of a cornstalk at the side of the road through which it is believed the fatal bullet passed after piercing Wallace's head.

The bullet hole in the cornstalk is plainly visible.

Below is a close view of a cornstalk at the side of the road through which it is believed the fatal bullet passed after piercing Wallace's head.

The bullet hole in the cornstalk is plainly visible.

Below is a close view of a cornstalk at the side of the road through which it is believed the fatal bullet passed after piercing Wallace's head.

The bullet hole in the cornstalk is plainly visible.

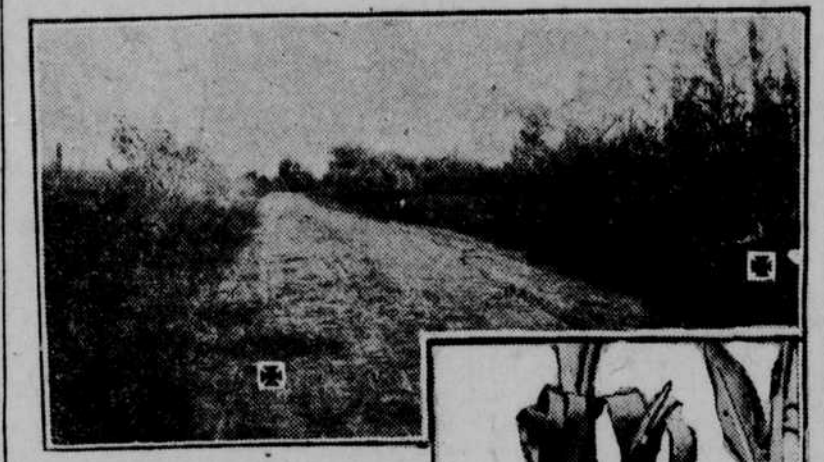
Below is a close view of a cornstalk at the side of the road through which it is believed the fatal bullet passed after piercing Wallace's head.

The bullet hole in the cornstalk is plainly visible.

Below is a close view of a cornstalk at the side of the road through which it is believed the fatal bullet passed after piercing Wallace's head.

The bullet hole in the cornstalk is plainly visible.

Scene of Wallace Tragedy, Showing Cornstalk Pierced by Fatal Bullet



It was on this lonely stretch of the Hazel Dell road, northeast of Council Bluffs, that Robert B. Wallace, prominent business man, took his own life.

Below is a close view of a cornstalk at the side of the road through which it is believed the fatal bullet passed after piercing Wallace's head.

The bullet hole in the cornstalk is plainly visible.

Below is a close view of a cornstalk at the side of the road through which it is believed the fatal bullet passed after piercing Wallace's head.

The bullet hole in the cornstalk is plainly visible.

Below is a close view of a cornstalk at the side of the road through which it is believed the fatal bullet passed after piercing Wallace's head.

The bullet hole in the cornstalk is plainly visible.

Below is a close view of a cornstalk at the side of the road through which it is believed the fatal bullet passed after piercing Wallace's head.

The bullet hole in the cornstalk is plainly visible.

Below is a close view of a cornstalk at the side of the road through which it is believed the fatal bullet passed after piercing Wallace's head.

The bullet hole in the cornstalk is plainly visible.

Below is a close view of a cornstalk at the side of the road through which it is believed the fatal bullet passed after piercing Wallace's head.

The bullet hole in the cornstalk is plainly visible.

Below is a close view of a cornstalk at the side of the road through which it is believed the fatal bullet passed after piercing Wallace's head.

The bullet hole in the cornstalk is plainly visible.

Below is a close view of a cornstalk at the side of the road through which it is believed the fatal bullet passed after piercing Wallace's head.

The bullet hole in the cornstalk is plainly visible.

Below is a close view of a cornstalk at the side of the road through which it is believed the fatal bullet passed after piercing Wallace's head.

The bullet hole in the cornstalk is plainly visible.

Below is a close view of a cornstalk at the side of the road through which it is believed the fatal bullet passed after piercing Wallace's head.

The bullet hole in the cornstalk is plainly visible.

Below is a close view of a cornstalk at the side of the road through which it is believed the fatal bullet passed after piercing Wallace's head.

The bullet hole in the cornstalk is plainly visible.

Below is a close view of a cornstalk at the side of the road through which it is believed the fatal bullet passed after piercing Wallace's head.

The bullet hole in the cornstalk is plainly visible.

Below is a close view of a cornstalk at the side of the road through which it is believed the fatal bullet passed after piercing Wallace's head.

The bullet hole in the cornstalk is plainly visible.

Below is a close view of a cornstalk at the side of the road through which it is believed the fatal bullet passed after piercing Wallace's head.

The bullet hole in the cornstalk is plainly visible.

Below is a close view of a cornstalk at the side of the road through which it is believed the fatal bullet passed after piercing Wallace's head.

The bullet hole in the cornstalk is plainly visible.

Below is a close view of a cornstalk at the side of the road through which it is believed the fatal bullet passed after piercing Wallace's head.

The bullet hole in the cornstalk is plainly visible.

Below is a close view of a cornstalk at the side of the road through which it is believed the fatal bullet passed after piercing Wallace's head.

The bullet hole in the cornstalk is plainly visible.

Below is a close view of a cornstalk at the side of the road through which it is believed the fatal bullet passed after piercing Wallace's head.

The bullet hole in the cornstalk is plainly visible.

Below is a close view of a cornstalk at the side of the road through which it is believed the fatal bullet passed after piercing Wallace's head.

12 Counties Have Net Tax Decrease of \$88,251.20

Total Reduction Under 1922 Is \$160,917.81, Says State Tax Commissioner W. H. Smith.

Lincoln, Aug. 30.—A total decrease in county taxes in 12 counties of the state for 1923 under 1922 is \$160,917.81, according to a report issued today by William H. Smith, state tax commissioner.

The tax figures made public today follows: Adams—Total county tax, \$106,054.69; increase, \$9,151.82; levy 2 mills. Total state, \$106,054.69; increase, \$14,859.24.

Buffalo—Total county tax, \$132,256.92; increase, \$10,004.89; levy 2.5 mills. Total state, \$132,256.92; increase, \$15,714.38.

Calumet—Total county tax, \$163,097.77; decrease, \$5,850.74; levy 2 mills. Total state, \$163,097.77; decrease, \$8,701.24.

Dodge—Total county tax, \$217,749.19; increase, \$4,212.46; levy 2.4 mills. Total state, \$217,749.19; increase, \$6,364.76.

Douglas—Total county tax, \$121,121.59; decrease, \$4,722.61; levy 2.3 mills. Total state, \$121,121.59; decrease, \$7,074.24.

Franklin—Total county tax, \$171,922.46; decrease, \$7,483; levy 2.4 mills. Total state, \$171,922.46; decrease, \$10,925.18.

Hall—Total county tax, \$116,049; increase, \$12,021; levy 2.5 mills. Total state, \$116,049; increase, \$18,031.57.

Lancaster—Total county tax, \$281,140.49; increase, \$2,222.28; levy 1.54 mills. Total state, \$281,140.49; increase, \$3,333.54.

Lincoln—Total tax, \$198,602.23; decrease, \$24,418.34; levy 2.2 mills. Total state, \$198,602.23; decrease, \$29,214.16.

Platte—Total county tax, \$166,006.65; decrease, \$22,126.22; levy 2.5 mills. Total state, \$166,006.65; decrease, \$24,177.57.

Sandwich—Total county tax, \$197,894.22; increase, \$14.82; levy 2.7 mills. Total state, \$197,894.22; increase, \$22,921.11.

Washington—Total county tax, \$171,029.24; decrease, \$13,238.49; levy 2.4 mills. Total state, \$171,029.24; decrease, \$19,857.89.

Adams county levy increased from 1.8 to 2 mills.

Buffalo county levy increased from 2.1 to 2.5 mills.

Case county levy decreased from 2.1 to 2 mills.

Dodge county levy increased from 2.1 to 2.4 mills.

Douglas county levy decreased from 2.6 to 2.3 mills.

Gage county levy decreased from 2.5 to 2.1 mills.

Hall county levy 2.5 mills—no change this year.

Lancaster county levy 1.54; no change this year.

Lincoln county levy increased from 3 to 3.2 mills.

Platte county levy decreased from 3 to 2.6 mills.

Sandwich county levy 2.7; no change this year.

Washington county levy decreased from 2.44 to 2.41 mills.

Farmers Tell Solon They Want Freight Rates Lower

Special Dispatch to The Omaha Bee. Chappell, Neb., Aug. 30.—Congressman Simmons was here today looking up the needs of the people in his district.

The farmers said at the meeting that they were willing for the government to set a price on wheat, but would be willing to let it take its course if freight rates and other commodity prices were adjusted.

Commissioners Accept \$100,000 High School

Special Dispatch to The Omaha Bee. Chappell, Neb., Aug. 30.—The county commissioners today accepted the \$100,000 high school building and paid the contractor all but \$500, which they are holding back to fix the leaks and damage that the late rains have done to the building.

Congressman Simmons Spends Day in Ogallala

Special Dispatch to The Omaha Bee. Ogallala, Neb., Aug. 30.—Congressman Elect Robert G. Simmons spent the day in Ogallala getting better acquainted with the people and studying conditions in order to better fit himself for the work he is about to take up at Washington.

The American Legion and the women's auxiliary gave a banquet Thursday in honor of Mr. Simmons, who gave a speech on the duties which confront the nation.

Many people from adjoining towns and communities were present to wish Mr. Simmons godspeed as he leaves September 14 for Washington.

Two Fairbury Pioneers Are Stricken by Death. Fairbury, Neb., Aug. 30.—With the death of Mrs. George Turner, 85, and Mrs. Hattie Yantz, 82, Fairbury loses two of its pioneer citizens.

The Turner family located here in 1873. Mr. Turner was engaged in the merchandise business and later served as county treasurer.

The Yantz family came in 1870, homesteading near Bower, moving to Fairbury eight years later.

Sunday School Picnic Held in Jefferson County. Fairbury, Neb., Aug. 30.—The second annual Jefferson county Sunday school picnic was held at the Fairbury park, with an attendance of about 2,000.

Dr. A. A. Brooks, pastor of Trinity M. E. church in Lincoln, delivered the principal address.

Tomato Peeling Record Broken at Nebraska City. Nebraska City, Neb., Aug. 30.—Miss Viva Nichols, a young woman employed at the local canning factory, broke the tomato peeling record of the plant, when she handed in tickets calling for 101 1/2 quart buckets.

The pay is six cents a bucket.

Omahans Pledge Dakota Support

Good Will Special Returns—Guests at Banquet at Yankton.

The Omaha Good Will special returned home at 7 Thursday night after a day and two nights spent getting acquainted with the people of Yankton, S. D. and surrounding country and a visit to the site of the bridge being erected over the Missouri river at Yankton.

"It was a wonderful trip," said A. C. Scott, president of the Chamber of Commerce. "We accomplished a two-fold purpose. We have stimulated interest in the bridge project among the 125 representatives of Omaha's industries who were on the good will special and we showed the Dakotans by our delegation that we want to see more of them."

The Omahans were guests of honor at a banquet at Yankton last night. Spokesmen for the delegation pledged the support of Omaha in the project.

"We will do our share and will accept our part of the financial burden," John L. Kennedy told the Dakotans. "It is the spirit shown by the fight you men are making for the bridge which will make Yankton one of the leading communities of the northwest. You can count on Omaha."

Slices of lemon in the clot in boiler will make the clothes beautifully white.

Indians Are Obtained for Arbor Lodge Transfer

Nebraska City, Neb., Aug. 30.—A band of Indians, who are appearing at St. Joseph this week, has been secured to take part in the big parade to be held here in connection with the Transfer Day festivities on September 27, the day Arbor Lodge is to be turned over to the state for park purposes.

A new Special Kodak

The new No. 1A Auto-graphic Kodak Special—pictures 2 1/2 x 4 1/4—was announced at the factory only a few days ago but it's here now. That's a slogan of this store: "Just out—just in."

And this new Kodak is a beauty—Kodak Anastigmat lens f.6.3, Kodamatic shutter and every practical refinement that the largest photographic organization in the world can devise.

Eastman Kodak Co. (The Robert Dempster Co.) 1813 Farnam St. Omaha, Neb. 308 South 15th St.

Hay Barn Burns

Beatrice, Neb., Aug. 30.—During a thunderstorm this morning lightning struck the large hay barn on the farm of Gerhart Reimer. The building and a large amount of hay were burned. The loss is placed at \$2,500, partially covered by insurance.



CHILDREN are usually very hard on shoes and buying new ones continually is expensive. Why not let us cut this cost down by repairing their shoes as good as new?

"New for Old" Krago Standard Shoe Repairing 1619 Farnam Street (Downstairs) Mail Orders Received

THE BRANDEIS STORE

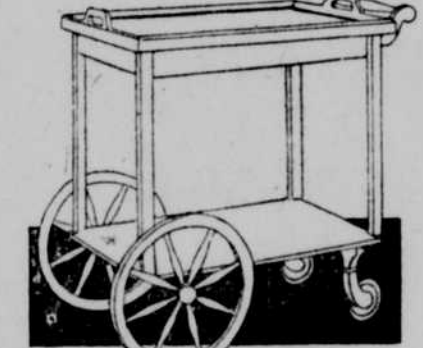
Friday—Closing Day of Our Great August Furniture Sale

Don't Miss This Big Opportunity to "Save the Difference" of 15% to 50%

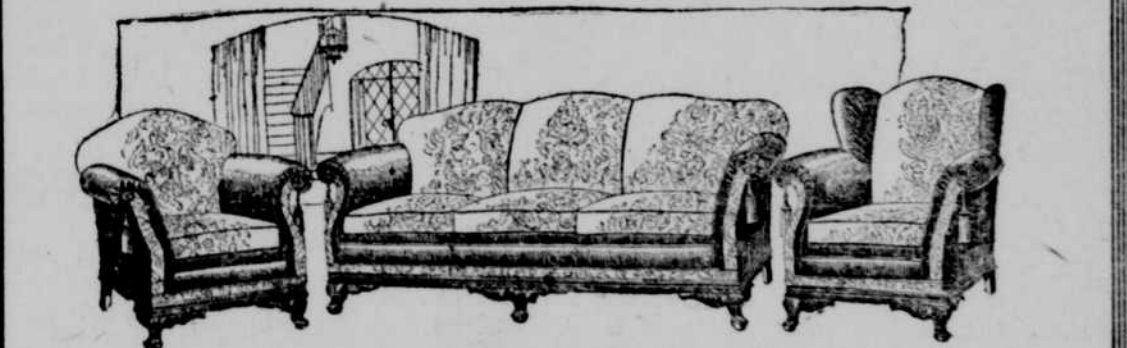
Thousands have saved money purchasing furniture in this great sale. The splendid success of this great sale is testimony to the high quality of the furniture we offer and to the substantial savings our prices afford. You can delay no longer. Come here Friday—the last day of our August Furniture Sale—make selections and if you wish pay on our

Easy Time Payment Plan

24.50 Tea Wagon 15.00 465.00 3-Piece Mohair Suite 350.00

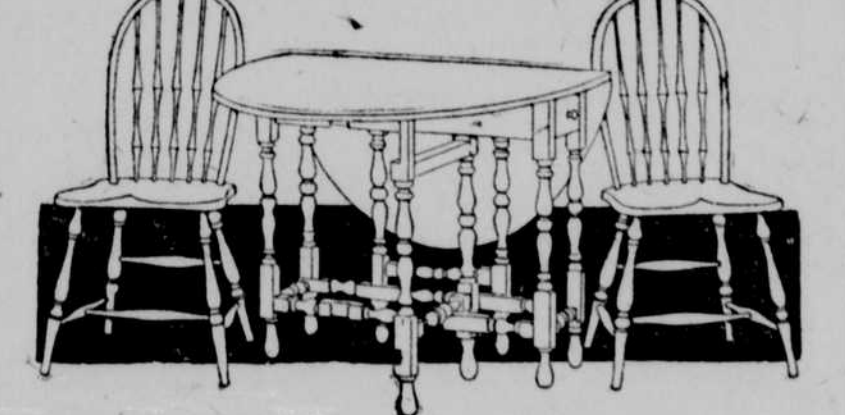


A beautiful mahogany finished tea wagon with large artillery rubber tired wheels, with the small ball bearing guide wheels. A regular 24.50 value.



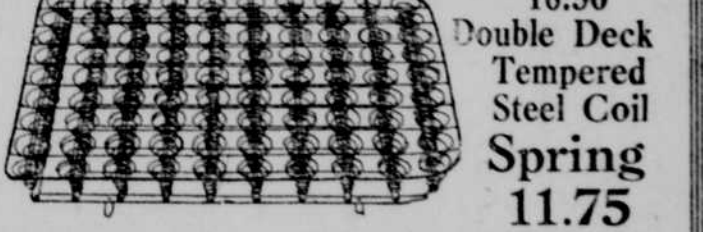
A massive and artistically designed suite, richly upholstered in heavy mohair. Handsomely tailored and finished. The heavy frame is finished in the antique gray. Loose spring filled cushions on each piece. See this remarkable value Friday.

\$5.00 Breakfast Room Suite 55.00



A five-piece suite consisting of solid mahogany top, gate leg tables, matched with four Windsor chairs. 54.50 Breakfast Room Suite—Five pieces 39.75 in gray enamel or walnut

Springs and Mattresses

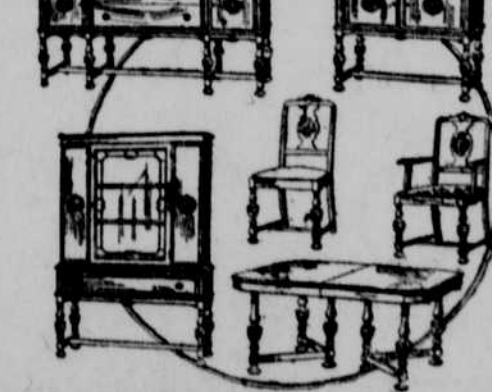


16.50 Double Deck Tempered Steel Coil Spring 11.75

30.00 Blackstone Mattress 19.75

Contains 55 pounds all fine layer cotton felt; built up with four extra rows of side stitching, special 19.75

All Dining Room Furniture Reduced 15% to 50%



Two Fine 600.00 Ten Piece Suites 450.00 Similar to picture; in the dull American walnut; handsomely carved and finished throughout; 450.00 tapestry seated chairs worth 600.00; special 350.00 Ten-Piece Suite—In the American walnut and the good old Queen Anne period; special for Friday's selling, only 195.00

Seventh Floor.

Do you know?
PREMIUM SODA CRACKERS
 Tempting squares of crispness with just a dash of salt.
FIG NEWTONS
 A tempting sweet made of fig jam and wheat cake.
LORNA DOONE Shortbread
 The perfect shortbread for use with ice cream or fruits. They are made by the bakers of
Uneeda Biscuit
 The Household Favorite of the Nation
 NATIONAL BISCUIT COMPANY
 Uneeda Baker

Saturday Is the First Day of September

Have You Taken Advantage of Low Summer Coal Prices?

We can fill your bins with either hard or soft coal

Updike Lumber & Coal Co.

Four Yards to Serve You