

### Roomers Flee as Building at Lincoln Burns

#### Four-Story Paint Firm Building and Apartment Razed —Damage Estimated at \$200,000.

Lincoln, March 13.—(Special).—Hundreds of hotel and rooming house guests, scantily clad, were forced to flee into the street by fire which broke out in the basement of a building occupied by the Van Sickle Glass and Paint company here early this morning.

The building is four stories high. The upper stories are occupied by apartments. The building was destroyed. Next door is the Victoria hotel, where 120 guests were stopping. Flames destroyed the top floor of the hotel and ruined the furnishings in the remainder of the building. Damage is estimated at \$200,000.

It was at first believed that an aged woman had perished in her room in the Van Sickle Glass and Paint building, but she later was found to have left the blazing structure without assistance.

**Sick to Posts.**  
Arthur Chandler and William Cozad, elevator boys at the Victoria hotel, worked heroically following the discovery of the fire, awakening guests at the hotel and carrying them to the lower stories and safety. They stuck to their posts while flames threatened the superstructure in which the big wheels which support the elevator cables are housed.

**Work Hazardous.**  
Fire Chief Hansen suffered a broken arm when struck by a falling ladder. Heed by barrels of paint and oil on the first floor of the building, where the fire originated, it soon assumed spectacular proportions. Successive explosions within the paint store made the work of firemen hazardous and nine lines of hose played on the conflagration seemed to produce no effect.

**Postal Savings Show Increase in February**  
Washington, March 13.—(Special).—Postal savings deposits, regarded as a barometer of business conditions, showed an increase in February for the first time in more than two years, the post office department announced yesterday.

A steady decline in the funds held in Postal Savings banks since January, 1921, has been attributed to the attractiveness of other government securities paying higher rates of interest so the "come back" is described by the postoffice department as indicating a healthy employment condition throughout the country.

**Gen. Pershing May Speak at Memorial Avenue Dedication**  
Lincoln, March 13.—General John J. Pershing, according to announcement made last evening is expected to be present at the dedication of Memorial avenue, which will take place on April 2, when the memorial will be presented by the Lincoln women's club to the city. Plans for the dedication are nearly complete.

The memorial takes the form of a thoroughfare, with the planting of a tree for each of the 93 soldiers from this county who lost their lives in the service.

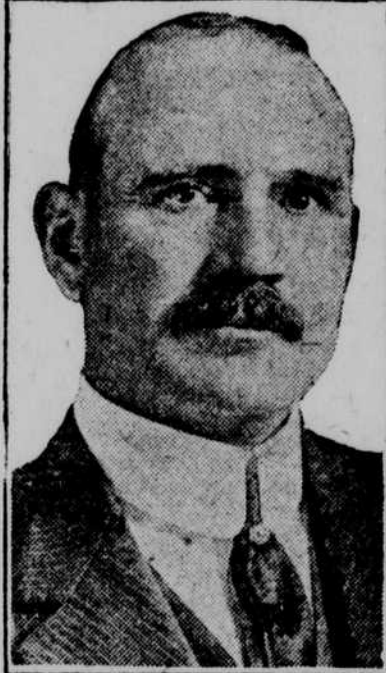
**Omaha Man to Talk Via Radio Next Friday**  
John W. Gamble, president of the John W. Gamble company and Standard Chemical Manufacturing company will speak for 15 minutes over the Palmer broadcasting station at Davenport, Ia., at 8:30 on Friday night.

### Road Conditions

(Furnished by Omaha Auto Club.)  
Lincoln highway, east: Roads are frozen this morning and are quite rough, cars can travel without a great deal of difficulty as long as the roads remain frozen but as soon as it begins to thaw they will be in very bad shape.  
Lincoln highway, west: Roads frozen this morning and cars can get over them by driving carefully. The unpaved section between Valley and Fremont will be almost impassable as soon as it begins to thaw.  
O. L. D.: Roads in very bad shape between Millard and Gretna. The best route to Lincoln would be the Lincoln highway to Elkhorn, thence south to Gretna and on to Lincoln.  
Highland cutoff: Roads rough.  
Black Hills Trail: Roads rough, as soon as it begins to thaw they will be almost impassable in places.  
Washington Highway: Roads in bad shape, especially between Calhoun and Blair.  
Omaha-Tulsa highway: Roads are frozen this morning and are rough. As soon as it begins to thaw they will be very muddy.  
Omaha-Topika highway: Roads rough.  
King of Trails, north: Roads rough. As soon as it begins to thaw they will be in bad shape.  
King of Trails, south: Roads rough, tourists can get over them as long as they are frozen, but as soon as it thaws they will be in bad shape.  
River to River road: Roads bad.  
White Way "7" highway: Roads rough and rutty, as soon as it begins to thaw they will be in bad shape.  
I. O. A. shortcut: Roads rough.  
Blue Grass trail: Roads rough and rutty. They will be in very bad shape as soon as it begins to thaw.  
Weather reported cloudy at all stations, with indications for clearing during the day.

### Motor Firm Head Built Carriages at \$1 Per Day

#### C. W. Nash, Spending Day in Omaha, Says Auto Material Prices Advancing.



MR. C. W. NASH

A middle-aged man, conservatively dressed, arrived in Omaha yesterday morning and in an interview confessed that at the age of 6 he was left without a home and that shortly afterward he was bound out to a farmer.

When urged to continue he related how at the age of 12 he escaped from the farmer; how he managed to make a frugal living as a carpenter; how he did chores on a farm so that he might attend a country school, and how some 20 years ago he entered the carriage building business for the munificent wages of \$1 a day.

This man is C. W. Nash, president of the Nash Motors and of the Lafayette Motors. He is one of the "big" men in the automobile industry. But he recalls with a smile that he sold many carriages in Omaha to the John Deere, Moline and the old Parlin-Orendorf companies.

**Material Prices Increase.**  
Here are some of his observations regarding the present situation of the automobile industry:  
"The cost of material and labor in the manufacture of automobiles is going up very rapidly. Following the war the high cost reached its peak in 1920. The lowest point was in the early part of 1922. Since July, 1922, the tendency of material prices has been upward. Wages have been advancing for the last three months.

"Fig iron costs 33.13 per cent more than at the low point; other steels are up from 15 to 30 per cent. Lumber is up from 20 to 30 per cent and leather for trimming is 20 to 30 per cent higher than at the low point.

"There are 12,000,000 motor cars and trucks in the United States. There is one automobile or truck to every eight persons. Of the 12,000,000 vehicles, nearly 2,500,000 were produced to meet the demand in 1922. Autos are taxed a 5 per cent excise as if they were a luxury, when they are a necessity. I favor a sales tax, but

why single out just one industry? It should be removed from the automobile industry or placed on other industries.

**"Partial to Omaha."**  
Mr. Nash announced that he is "partial to Omaha" and tributary territory. He expressed the belief that this territory is on the verge of a "rapid comeback" that will keep it "going strong" when other sections which were less hard hit or have "come back more rapidly are standing still. He expressed the opinion that more automobiles will be produced and sold during the first six months of this year than during any other six months in the history of the automobile business.

Mr. Nash, who operated the Buick Motor company from 1910 to 1916, and who was president of General Motors from 1912 to 1916, spent the day in Omaha at the Nash-Vrieseman Auto company, Tenth and Howard streets.

day night, searchers today are combing each bank of the river in the direction of Omaha, 30 miles distant.

Henry and William put out in a hazardous boat Saturday night and followed their brothers as the two floated downstream on an ice cake singing "Nearer My God to Thee."

**Aurora C. of C. Urged.**  
Aurora Neb., March 13.—(Special).—At the Rotary club meeting, March 21, the special topic of discussion will be the organization of a Chamber of Commerce in Aurora. Committees will interview the businessmen of the city and report on that date.

## THE BRANDEIS STORE

### A Coming Event for Jackie

WHEN Jackie Coogan gets a bit bigger he will have a suit like one of these this store shows now for boys. An all-wool, tip-top tailored suit with two pair of full-lined trousers and double-stitched to stand the stress. Sure as pigs is pigs, he will have a sport model with belt, yoke, fancy pleats and roomy pockets (for Jack-knives, rabbit's feet and what-not). If it's a suit like one of these it will wear like Goldy's smile. Chuck full o' value at—

With 2 Pairs of Trousers. **14<sup>75</sup>** All Wool Cravenette Processed

A New Spring Cap is needed for wear with a nice new suit. Here are some dandies of fine fabrics and in colorings to match the new suit. Special **1.00** at

A New Blouse is absolutely necessary to complete the outfit. Beautiful new patterns in standard makes of woven madras, collar attached blouses **95c** at

Fourth Floor

### Attorney Would Jail U. S. Rohrer

#### Lawyer Makes Plea When Dry Chief Refuses to Name Liquor Informant.

A jail sentence for U. S. Rohrer, federal prohibition director for Nebraska, was asked yesterday by Herman Aye, attorney for Henry R. Gering, at a hearing before United States Commissioner Boehler.

Mr. Rohrer had declined to give the name of the person who called at his office on January 11 and informed him that intoxicants were being manufactured and sold at the establishment of the Henry R. Gering company, manufacturing chemists, 1114 Farnam street.

"I don't think I have any authority to compel him to tell," said the commissioner.

**Gering Bound Over.**  
At the conclusion of the hearing, Commissioner Boehler bound over Mr. Gering, Rudolf Gerber and L. H. Hansen to the grand jury under \$1,000 bond each on charges of conspiracy to violate the national prohibition act.

Several verbal tiffs arose between Rohrer and Aye while Rohrer was telling how he and his men went to the Gering place the evening of January 12 and found Gerber and Han-

### Rich Is Willing to Plead Guilty

#### Confessed Siefkens' Slayer Wants to Be Assured of Life Sentence, However.

William Rich, confessed slayer of C. F. Siefkens and his son, Robert, 16, in an attempted oil filling station robbery in Omaha last May, who is now on his way back to stand trial, has agreed to plead guilty to the double murder if assured a life sentence, according to Henry Beal, county attorney.

Mr. Beal and Detective William Gurnett left Cleveland, O., yesterday morning with Rich in custody. They spent last night in Chicago, Mr. Beal said, as he did not wish to travel with Rich at night, fearing an attempt to liberate him. Rich was placed in the Cook county jail, while his two captors spent the night at a hotel.

Rich's offer, according to the county attorney, was made following a new statement in which he corroborated one made to Cleveland detectives following his arrest last week. He is said to have admitted three robberies in Chicago, three in Omaha and five in Cleveland since the Omaha slayings.

He has been indicted in Cleveland for robberies there and faces life imprisonment under the Ohio laws. In case he is freed of the murder charge here, he will be returned to Cleveland.

### Storm Bad for Range Stock in Northwest Nebraska

#### Beatrice, Neb., March 12.—(Special).

—Snow and rain visited this section of the state today, while the precipitation was not heavy it will be of benefit to the winter wheat and crops in general.

**Lenine Suffers Stroke.**  
London, March 13.—(By A. P.)—A Reuter dispatch from Helsinki today says Premier Lenine of Soviet Russia had an apoplectic stroke yesterday. His condition, the message adds, is said to be serious.

### "The Stepper."

is a classy "gentleman." Knows the Art and the reason (or value) of being well dressed.

You'll be interested in his story. Watch for him

## TOMORROW

### KIDNEY and BLADDER

troubles usually respond readily to our methods. If you are in doubt about your case, you can investigate in safety, as no qualified practitioner will accept a case he cannot help.

### The Thomas Chiropractic Offices

1712 Dodge Street Gardner Bldg. AT lantic 1293

# THE BRANDEIS STORE

## Authentic New Fashions for Spring

### New Suits for Spring 29.75 to 195.00

New three-piece and two-piece suits show the Egyptian influence in their elaborate embroidery or braiding. The natty side-tie, trig box coats and hip length coats are shown with either straight or slightly draped skirts.

**Materials Are Twill Cords, Covert and Tricotine in Gray, Tan and Navy**

### Sweaters 2.98 to 25.00

Sweaters for sport or street wear, feature Novelty weaves in brilliant or soft colors and in a variety of styles.

### Winsome Spring Frocks 25.00 to 95.00

The slender silhouette or the bouffant outline is a matter of type and choice this season. Straightline Frocks of Egyptian prints with just a hint of draping and the crisp bouffant frock of taffeta are equally favored.

Two-piece tailored dresses made with a jacket like overblouse show vests of vivid spring colors.

### New Spring Capes, Coats 25.00 to 250.00

Pop Coats for town, country, street and sport wear are utilitarian as well as smart. They are manishly tailored of the newest fabrics, such as camels' hair, Polo cloth, tweeds and novelty fabrics.

Capes and Wraps are graceful and slenderizing, depending for their beauty on the soft rich pile fabrics of which they are fashioned. The darker shades are favored, but tan, gray and beige are represented.

### New Costume Blouses 5.00 to 25.00

The new costume blouses are enjoying a vogue that their beauty assures them. The Jacquette side-tie, Balkan, Peasant and Big Band models, are developed in colorful printed crepes. Beaded models, sponsored by Paris, are charming with bright, intricate designs on light or dark crepes.

### Skirts 5.00 to 30.00

Paisley and Novelty Silk Crepe Skirts to wear with the costume blouse — completing a distinctive Spring costume.

For the Recreation Hours, The Brandeis Store Presents Sports Toggery That Embodies All the Life and Buoyant Spirit of Spring Itself

Second Floor

### Handkerchiefs 25c

Men's and Women's Pure Irish Linen Handkerchiefs — Of fine sheer linen hemstitched with 3/4-inch hems. Embroidered initials in corners. Each 25c

Main Floor—East

### Drug Specials

25c Dressing Combs—Coarse or fine 19c  
Coty's L'Origan Perfume—bulk, per oz. 1.98  
Phillips Milk of Magnesia 39c  
Hinkle's Pills, bottle of 100 15c  
Household Sponges—Natural or bleached, large size 39c

Main Floor—West

### Distinctive Models in Spring Millinery 15.00 to 28.00

An aggregation of trimmed hats from New York and our workroom that reprints all that is new in the Season's modes. Large hats, Pokes, Bow Hats, Flower Hats and other styles.

A collection of hats most interesting to the woman who appreciates value as well as style and quality.

These Lovel Models Await You in Our French Room

Second Floor—East

### Linen Specials

Full Size Bed Sets—In snowy white crochet, scalloped cut corners, bolster to match. In beautiful designs, Marseilles style. Per set 4.98

Steven's Linen Crash Toweling—Sturdy and absorbent. Natural color with blue border. A splendid wearing toweling. Per yard 19c

Hemstitched and Scalloped Table Cloths—Medium size. Many are scalloped in colors, pink, blue and orange. Each 1.25

Aercol Wash Cloths—In fancy colors, many have crocheted edges in pink and blue. Priced from 8c to 20c

Main Floor—West