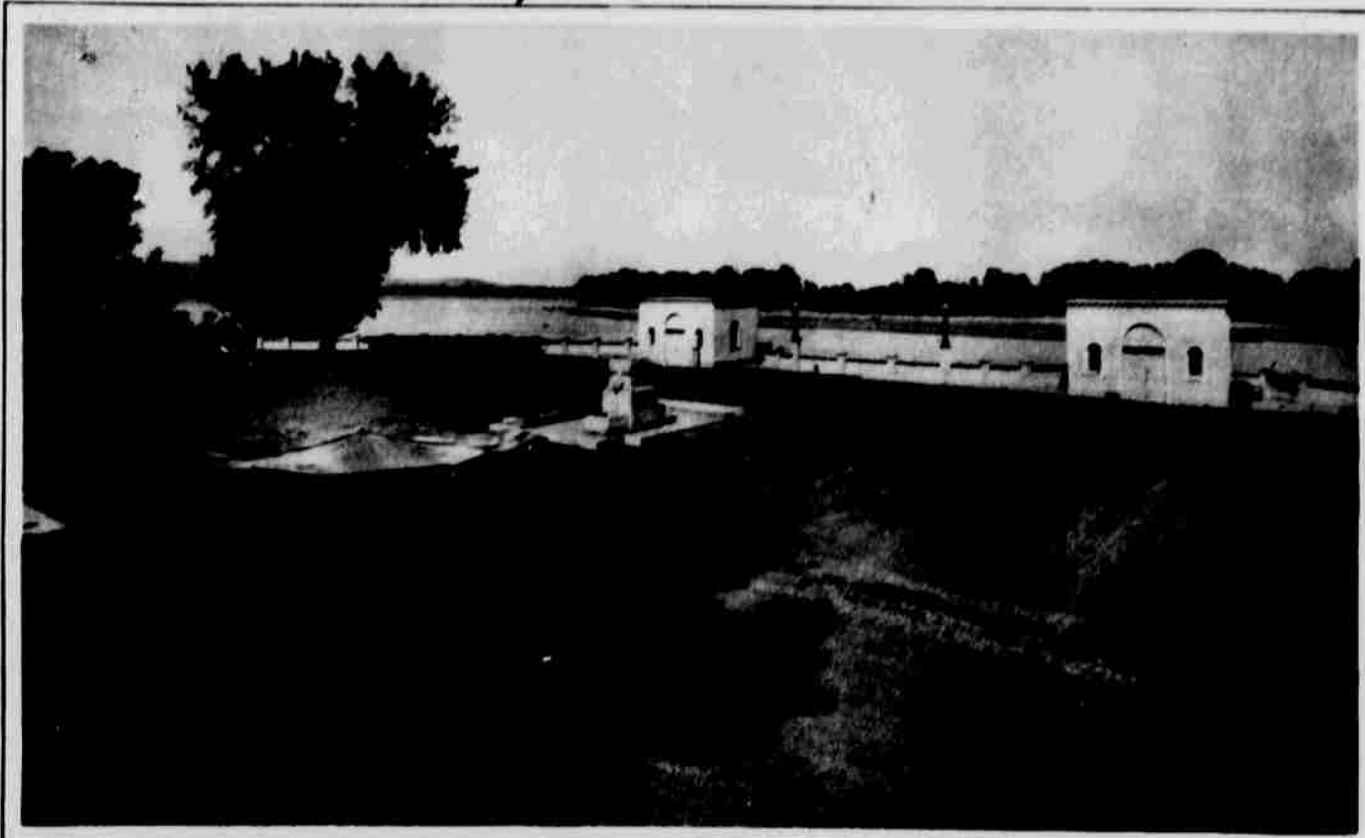


Beauty and Utility Combined in Omaha's Municipal Water Plant

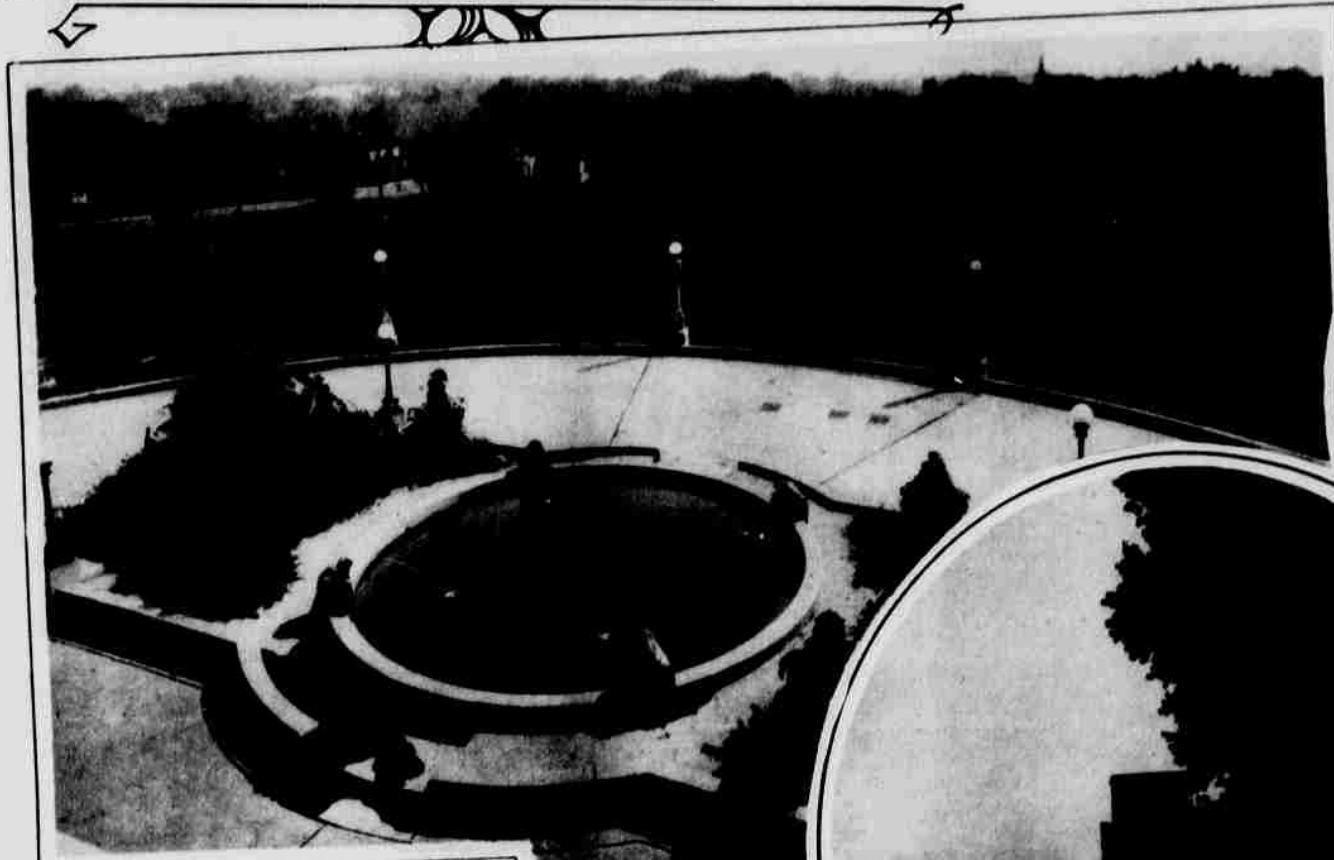


A well-kept park adds attractiveness to the Minne Lusa intake station.



This building houses the offices and machinery of the Minne Lusa station, Florence.

Photos by
Louis R.
Bostwick

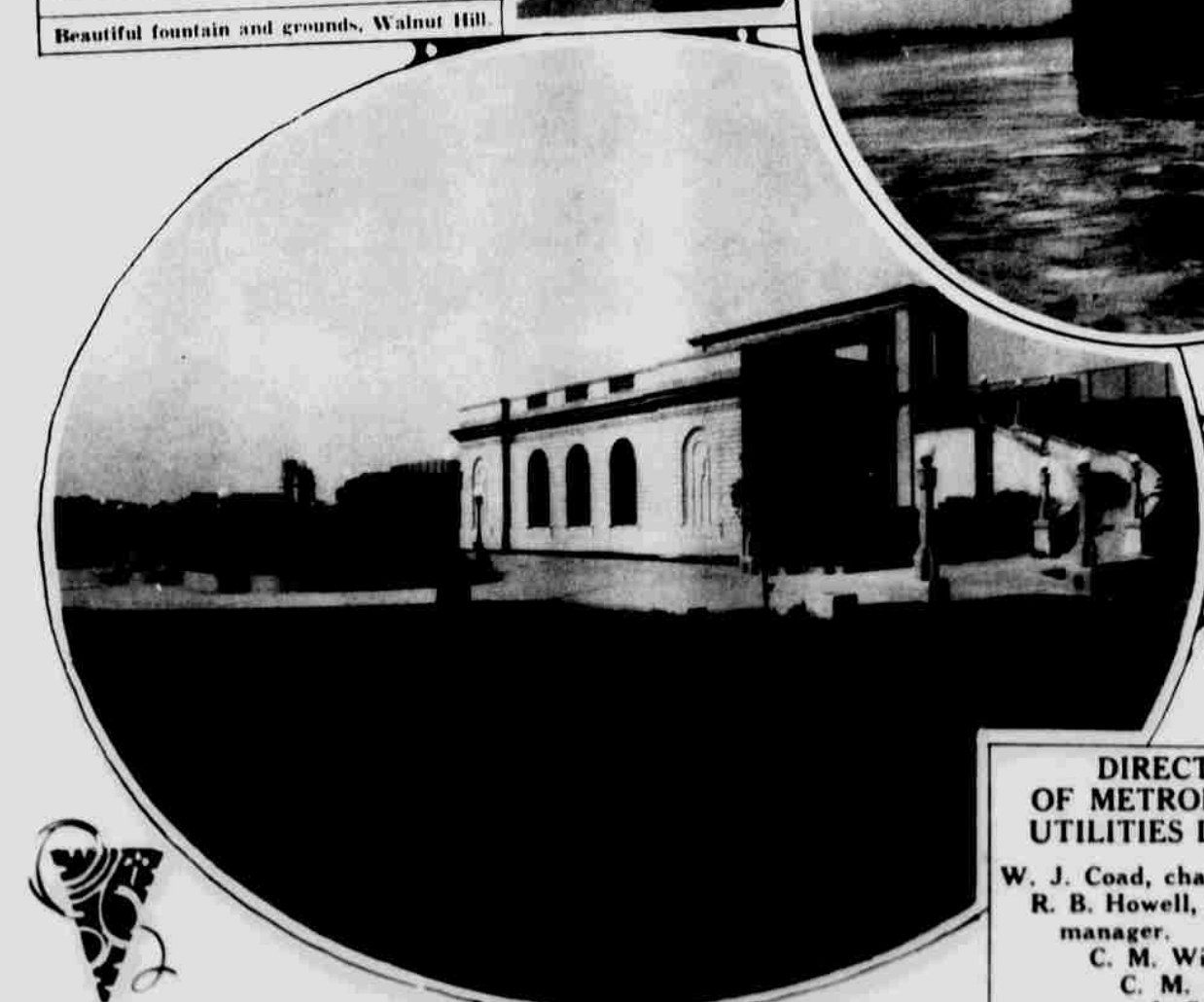


Beautiful fountain and grounds, Walnut Hill.

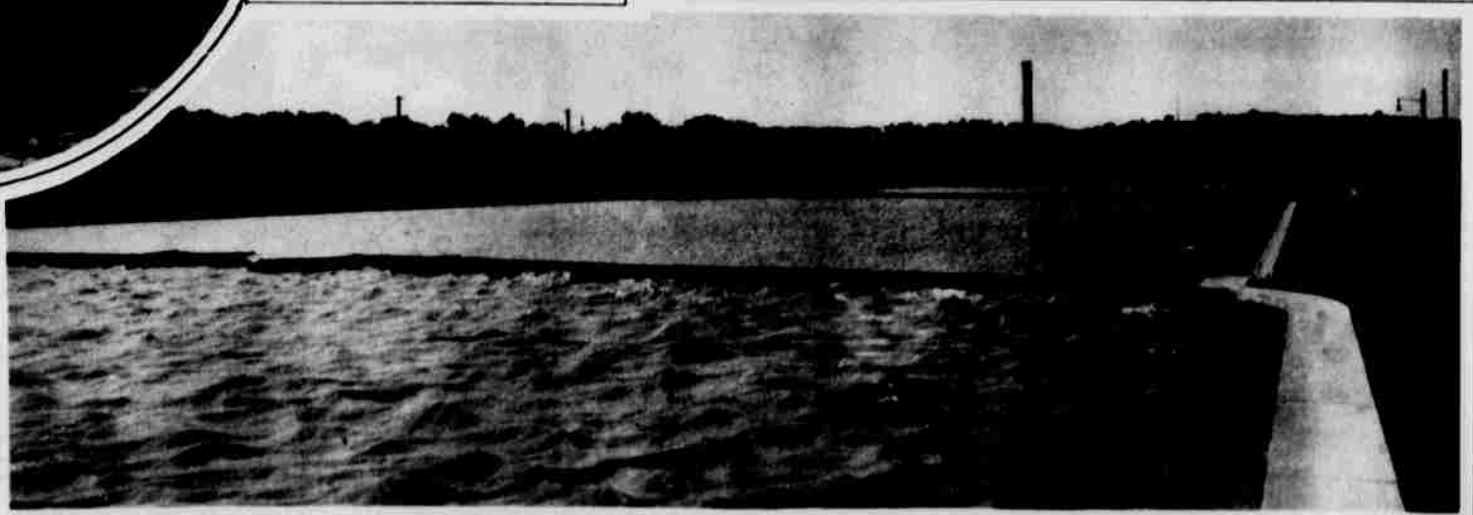


Upper pergola, overlooking reservoir, Walnut Hill station.

Where Omaha's water comes from, the Missouri river intake for the Minne Lusa station. With its improved system of filtration, chemical treatment and reservoir capacity, Omaha takes high rank among metropolitan cities for the purity and reliability of its water supply.



General view of the Walnut Hill station.



The reservoirs at Minne Lusa.

DIRECTORS OF METROPOLITAN UTILITIES DISTRICT

- W. J. Coad, chairman.
- R. B. Howell, general manager.
- C. M. Wilhelm.
- C. M. Gruenther.
- J. C. Dahlman.
- F. D. Wead.



Walnut Hill reservoirs.



Looking through the doorway of the Minne Lusa station, fountain in foreground.