

Iowan to Propose More Legislation for Soldier Aid

Representative Sweet Has Direction of Program in Behalf of Disabled War Veterans.

By GRAFTON WILCOX, Omaha Bee Staff Writer.

Washington, Oct. 7.—In addition to removal of effort to consummate soldier bonus legislation when congress reconvenes additional legislation to promote the welfare of world war veterans is to be pressed.

Representative Burton E. Sweet of Iowa, author of the law which centralized all soldier relief activities of the government in the veterans' bureau, is directing the program for further legislative relief. He has the co-operation of Senator David I. Walsh of Massachusetts, who worked with Sweet on the program of relief in the last congress and in the session just closed.

To date the government has appropriated \$2,000,000,000 for care and training of the disabled, has arranged for expenditure of more than \$35,000,000 for construction of new hospitals and created a separate veterans' bureau to supervise relief measures.

Champions of this soldier do not propose to stand on what has been done. The program being considered by Representative Sweet is entirely apart from the bonus measure. Mr. Sweet includes in the proposed program for further relief the following:

Enactment into law of what is known as Order 57, which permits the veterans' bureau to rate men who

are, have been or shall be inmates of hospitals or asylums during a continuous period of one year or more as totally and permanently disabled. To make provision that in no case shall the compensation of a disabled man be reduced unless a physical examination shall have been made subsequent to his last rating nor until he shall have been given at least three months' notice of the proposed reduction.

To provide that psychosis, neurosis, psychoneurosis, active tuberculosis or chronic emphysema developing within three years after separation from the service shall be considered to have been acquired while in the service. The present law limits the period to two years.

To make certain that in the event of death before or after discharge or resignation from the service, the veterans' bureau shall pay not more than \$200 toward the funeral expenses and shall provide a flag to cost \$5 to drape the coffin of the deceased, the flag to become the property of the next of kin.

To provide that the veterans' bureau shall furnish each patient on discharge from a hospital with a statement of medical findings as to his condition.

To make more liberal provisions for the reinstatement of lapsed insurance policies and for the investment by the veterans' bureau of insurance premiums in interest-bearing obligations of the United States or in bonds of the Federal Farm Loan bank.

New Membership Secretary

The officers of the Omaha Chamber of Commerce have announced the appointment of W. A. Case as membership secretary. These duties were formerly taken care of by Miss Lena Bellman, who becomes secretary of the business and professional women's division, and will continue to be secretary of the good fellow ship committee, entertainment committee and several other important committees.

We Welcome the Degree of Honor

of the Grand Lodge, and invite the members to make use of the accommodations we have arranged for them. Women's Rest Room—Third Floor

Noonday Program 12:20-12:50

Tuesday, October 10, will begin the first of a series of Tuesday noonday lectures to be given in the Burgess-Nash auditorium. Under the general direction of Miss Marguerite Beckman, head of the children's theater movement here, lectures on drama, music, art, literature and architecture will be held each Tuesday from 12:20 until 12:50 without admission charge.

It is our plan to give business men and women a brief respite from duty.

Program for October 10

Madame Stadnitska—Pianist
Harry Disbrow—Baritone
Robert Cuscaden—Violinist
Burgess-Nash Auditorium—Fifth Floor

Silk Jersey Vests Each, \$1.95

Made of firmly woven Jersey in French band and bodice top style, with shoulder straps of self material. Pink or orchid. Special Monday.

Children's Union Suits Suit, \$1.50

Of fine lightweight wool and cotton finished with crocheted edge. Made ankle length with Dutch neck and elbow sleeves. Sizes 4, 6, 8 and 10.

New Tweed Hose Pair, 50c

Excellent for everyday wear, for they are a serviceable wearing hose woven with fancy rib in soft shaded mixtures.

Burgess-Nash Hosiery Shop—Main Floor

BURGESS-NASH COMPANY.

"EVERYBODY'S STORE"

Free Movies

Any child calling in our children's departments will receive free from the Humane Society admission to the Muse theater Saturday morning, October 14.

Hour Sales

Crepe de Chine Gowns will be placed on sale for one hour only—

11 o'clock until 12 At \$2.99

Burgess-Nash Lingerie Shop—Second Floor.

1000

Silk Envelope Chemise will be placed on sale for one hour only.

12 o'clock until 1 At \$1.99

Burgess-Nash Lingerie Shop—Second Floor.

Full Sized

Dimity Bed Spreads

Spreads of crinkle dimity made with scalloped edge and cut corners. Limit of 2 to a customer.

1 until 2 At \$2.99

Burgess-Nash Lingerie Shop—Second Floor.

1000 Flapper

Envelope Chemise will be placed on sale for one hour only.

2 o'clock until 3 At 79c

Burgess-Nash Lingerie Shop—Second Floor.

BURGESS-NASH COMPANY.

"EVERYBODY'S STORE"

Fall and Winter Styles

in

Mme. Binner Corsets

Why go on buying just a "corset" when we will help you to select a Mme. Binner corset that will make you look so much better and feel so much better, and one in which you are sure that you have the corset designed for your figure. You say that your figure problem is so different. You are right, it is. It is an individual need that has been anticipated by Mme. Binner, who has created models for you alone.



There are models designed for the tall, slender woman who, when she is properly fitted in a Mme. Binner has a willowy charm, but wrongly corseted, becomes angular and stiffly thin.

Models for the tall, slender figure, \$5 to \$25.

The stout woman corseted in a Mme. Binner model need not endure the discomfort of stiff, heavily boned tell-tale corsets. She need but realize that there is unbelievably more comfort in the dignified and becoming kind of natural corseting to be found in the special models designed by Mme. Binner for her figure.

Models for the stout figure, \$5 to \$25.



The short average woman corseted as she ought to be in a Mme. Binner model will subtract pounds from her apparent weight and will appear slim by proportion.

Models for the short, stout figure, \$5 to \$17.50.



Mme. Binner corsets made of silk, batiste, broche, coutil, etc. — had elastic, in white, orchid, flesh— \$7, \$7.50, \$8.50, \$9.50, \$10, \$12.50, \$17.50, \$25.

Art Needlecraft Specials

These Prices for Monday Only

Thousands of pieces in attractive new designs. Below are listed a few of the many pieces stamped to embroider. A wonderful opportunity to purchase for holiday gifts.

At 50c

Stamped Scarfs.
Stamped Centers.
Stamped Napkins.
Stamped Doilies.
Stamped Bibs.
Stamped Infants' Caps.

At 65c

Stamped Centers.
Stamped Towels.
Stamped Scarfs.
Stamped Throws.
Stamped Sets.
Stamped Pillows.
Stamped Aprons.

At 75c

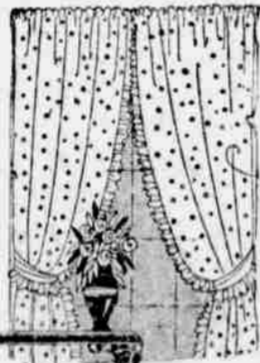
Stamped Library Scarfs.
Stamped Library Centers.
Stamped Luncheon Sets.
Stamped Breakfast Sets.
Stamped Vanity Sets.
Stamped Dresser Scarfs.
Stamped Dresser Sets.

Burgess-Nash Art Needlework Shop—Second Floor

Curtains and Draperies

Make Windows Attractive

Following fall house cleaning, most housewives find it necessary to replace some of their window curtains or shades. We are offering the following values for Monday:



Ruffled Curtains Pair, \$1.39

Daintily ruffled curtains remain by far the most popular for use in bedrooms. We have an exceptionally fine value in this style with full ruffles and tie-backs. 2 1/2 yards long.

Mercedized Pongee Yard, 69c

Heavier than all-silk pongee, this highly mercedized cotton material looks well and wears well. It is most attractive for casement windows.

Figured Marquisette Yard, 75c

These have all the beauty of the filet patterned, yet do not require stretching—ironing is all that is necessary. In ivory or ecrú.

Shades on Hartshorn Rollers Each, 79c

These are size 36x6, made of a good quality shade cloth in both light and dark green. Mounted on the famous Hartshorn rollers.

Burgess-Nash Drapery Dept.—Fourth Floor



Sale of Glassware

3,000 Pieces Greatly Underpriced

A factory's overstock of highest quality lead-blown glassware. All are late shapes, decorated with plain and simple designs in needlepoint etchings.

From these pieces you will be able to renew broken numbers, and to add the pieces required by increased winter entertaining. There are also novelty items for gift purposes. Many stemware shapes.

Jugs, each, \$1.95.
Goblets, each, 29c.
Parfaits, each, 29c.
Tumblers, each, 19c.
Grape Juices, each, 19c.
Comports, each, 98c to \$1.49.

Oyster Cocktails, ea., 19c.
Sherbets, high and low, each, 29c.
Ice Teas and Highballs, each, 29c.
Wines, Cordials, Cocktails, each, 29c.

Burgess-Nash Housefurnishings Shop—Fourth Floor

Linoleum by the Yard

New Patterns—Low Prices

Many would like to re-floor every room in the house with so practical and serviceable a covering. These attractive printed and inlaid patterns in wood, tile, and carpet effects are becoming more and more popular with women who desire a sanitary floor covering, and one that is easily kept in this clean condition.

If you would like an estimate of the cost, we will gladly measure the floor space without charge to you. 6-foot widths are priced, a square yard, at—

\$1.15 to \$3.00

Armstrong Linoleum Rugs

We have both runner and stove rugs in a good range of patterns and colorings and one may choose these genuine Armstrong linoleums at the following low prices:

3x12-ft. size \$1.98
4-6x6-ft. size \$1.50
4-6x10-6-ft. size \$2.49
4-6x12-ft. size \$2.98

Carpet Remnants Each, \$1.00

18x27-inch size with finished ends. These small rugs are samples from discontinued patterns of our cut-order line. Limited number only. Each, \$1.00.



Burgess-Nash Rug Shop—Sixth Floor

All Wool Skirts \$5.00

Most attractive to wear with sweaters or blouses are these skirts of all-wool Prunella. Every woman needs at least one separate skirt to complete her wardrobe. Of black, navy blue, and brown with stripes of contrasting colors. All are box pleated.

Sizes 24 to 34 waist.

Burgess-Nash—Department Store

Monday Specials in Domestics and Blankets

Crash Toweling Yard, 9c

18-inch bleached toweling. Good quality for rack towels. Specially priced for Monday.

Huck Towels Each, 25c

Hemstitched huck towels with fancy borders. Size 18 by 26 inches.

Table Damask Yard, 49c

Mill ends of fine bleached table damask in from 2 1/2 to 10-yard lengths.

Bed Spreads Each, \$1.89

Good weight, crocheted bed spreads for full sized beds.

Bleached Muslin Yard, 16 1/2c

Heavy weight 36-inch muslin. Without dressing.

Serim Curtains Yard, 98c

Made of plain serim with dainty ruffled borders. 2 1/2 yard length.

Tussah Pongee Yard, 69c

36-inch width, natural colored Tussah Pongee. For Monday only.

Kimona Silk Yard, 89c

Attractive new colors and designs in these kimona silks. 33 inches in width.

70x80-in Cotton Blankets, each \$1.49

Cotton blankets in grey, tan and white with fancy borders.

Extra Size Blankets Pair, \$3.95

60x90-inch blankets in 72x82-inch size, in plaid patterns. Excellent quality.

Large Blankets Pair, \$4.95

72x82-inch size, in plaid patterns. Excellent quality.

Burgess-Nash Department Store

Have You Ever Cooked An Entire Meal Over One Burner

Wednesday and Thursday, October 10 and 11, a demonstration, in the Housefurnishings section, will show you how it may be done. She uses the Universal Double Router and Steam Cooker over only one burner, in such a way as to save 80 per cent of the fuel ordinarily required to prepare the meal.

Burgess-Nash—Fourth Floor

Men's and Boy's Four-in-Hand Ties Each 10c

With silk ties at this low price you will be able to have several new ones. Various patterns and colors.

Burgess-Nash Red Arrow Branch