

Electric Susan, as a Good Maid, Is Indispensable

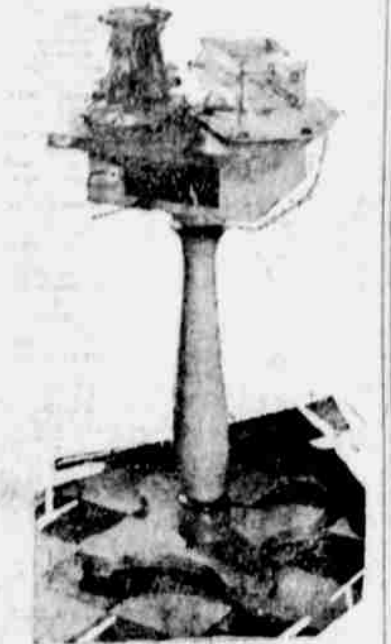
Masquerading as a Small Table, She Easily Performs Three Tasks at Once.

Simple, silent and serviceable, Electric Susan slips into the home lucky enough to receive her and like any well trained serving maid, she instantly becomes indispensable.

Electric Susan masquerades as a small, compact, lightweight table. But she is considerably more than a table. She wears an apron; most tables do. The one worn by Electric Susan, however, is different; for one can hook her apron strings into the nearest electric receptacle and she becomes three Susies instead of one!

Susie has, as will be seen in the picture, three electric connections attached to those apron strings, at the other end of which there is one plug, ready to attach to any "convenience outlet" available, thus making three outlets grow where but one grew before.

Before one can fully understand Susie's charm, one must learn that an outlet, more particularly a convenience outlet, is a point of connection where electricity is drawn "out" from the wires which bring it into the walls of the home, and is led



from those wires into the wires which bring it into the walls of the home, and is led from those wires into the wires which feed fan, washing machine, cleaner, toaster, percolator, or any other device animated by electric power or electric heat.

Very few homes are so well aired and supplied with outlets that it is an easy matter to attach all the cozy little appliances needed to cook a meal at the breakfast table. Yet there is a charm about meals so cooked, while the mistress sits cool and comfortable, chatting with family or guest, which cannot attach to those cooked in the kitchen, unless the home is blessed with a perfect maid. Electric Susan, used as a table adjunct only, is a delight.

But Susie is quite as useful in the bedroom, living room, sun parlor or outdoor living room. She will hold a lamp and a fan, and still have an outlet left where the sweeper, or an electric iron for some hasty job of pressing may be plugged in without fuss or trouble. She will serve floor-polishing machine, curling iron, time heater for quick hot water, violet ray, vibrator, heating pad, incense burner, sewing machine, or baby's milk warmer. She will move to the porch. Here may be set simmering a grill with impromptu but appetizing dishes, to be served amidst an environment of flower boxes and softly shaded lamps.

Susie weighs but 16 pounds; her triple outlets are of the universal type, and will take care of all the standard appliance connections made. The cord with which she is fitted is 10 feet long.

This novel little table is most appropriate as a gift. Husband searching for novelties that are of real constructive value will make no mistake in choosing Susan, while bachelor friends who are entertained with occasional dinners and suppers in some home of charm will find it a wise and a welcome offering to the hostess who presides in that home.

The table is made of mahogany, and in two styles. One is colonial, supported by a pedestal, and looks very much like a Martha Washington sewing table. The other is a two-shelfed style of more severe modern type.

Luminous Minnow Used to Attract Fish Day or Night

A fisherman's luck depends very largely upon the bait he uses, and, having exhausted the possibilities of worms, frogs and grasshoppers, he has turned to electricity to supply the necessary lure.

A luminous minnow is now on the market which, when put in the water, will attract fish by day or night. The body is of crystal with a tube of permanently luminous material and resembles a wriggling worm in the water. It is protected from breakage by fine wires and may be used with a single or double hook.

Double Socket Adapted to Any Lighting Fixture

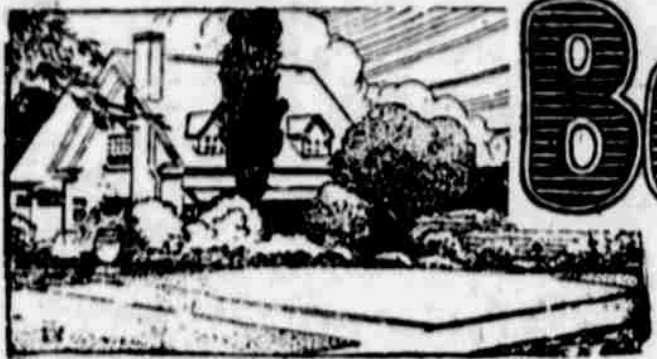
A new double socket that is adapted to any lighting fixture without the necessity of removing the shade and at the same time permitting use of the light within the shade, as well as any other appliance attached to the lower socket, has been placed on the market.

Its quick connecting features render it readily adapted to portable use in any room in the house. It is finished to match any fixture to which it is to be connected.

Electric Sprayers Make Furniture Painting Easy

Painting was a slow, tedious job until the advent of the electrical sprayers which transform furniture, porch chairs, walls, artificial flowers or whatever strikes the fancy.

Much of the labor of varnishing and painting has been eliminated by this clever device, which paints everything from machinery to doll houses in the shortest possible time.



Build Your Home NOW!

Have These Firms Furnish Your New or Old Home

SPECIAL SIMPLEX SALE

21 styles. A model to meet your need, space and pocketbook. Guaranteed rust-proof oven linings.



This model \$30.00

Prices greatly reduced. Free connection. Guaranteed satisfaction.

EASY TERMS

**Mid-Western
Appliance Co.**

Opp. Orpheum
AT 4289. 413 S. 15th St.



The Beauty of Your Home Depends on the Face Brick

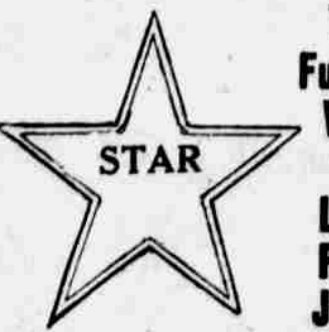
Select your face brick for your New Home from our Building Exposition Rooms. You will have your choice of many beautiful colors and textures. Wire-cut tapestries, vertical scored, rolled matt and smooth.

"See the Brick in the Wall"

SUNDERLAND BROS. CO.

Entire Third Floor Sunderland Bldg., 15th and Harney

AT lantic 2700



The
Furnace
With
the
Leak-
Proof
Joints

Gives satisfaction and will heat any size house at a very low cost.

The STAR FURNACE

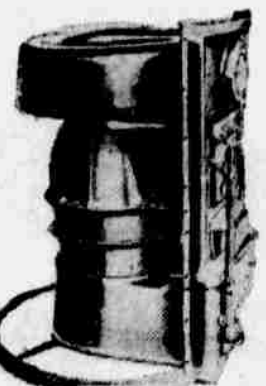
is durable, economical and convenient to operate. Ask about our payment plan.

WE REPAIR ALL MAKES OF FURNACES

W. A. HABERSTROH & SON

General Sheet Metal Works—1402-4-6-8-10 Military Ave., Omaha

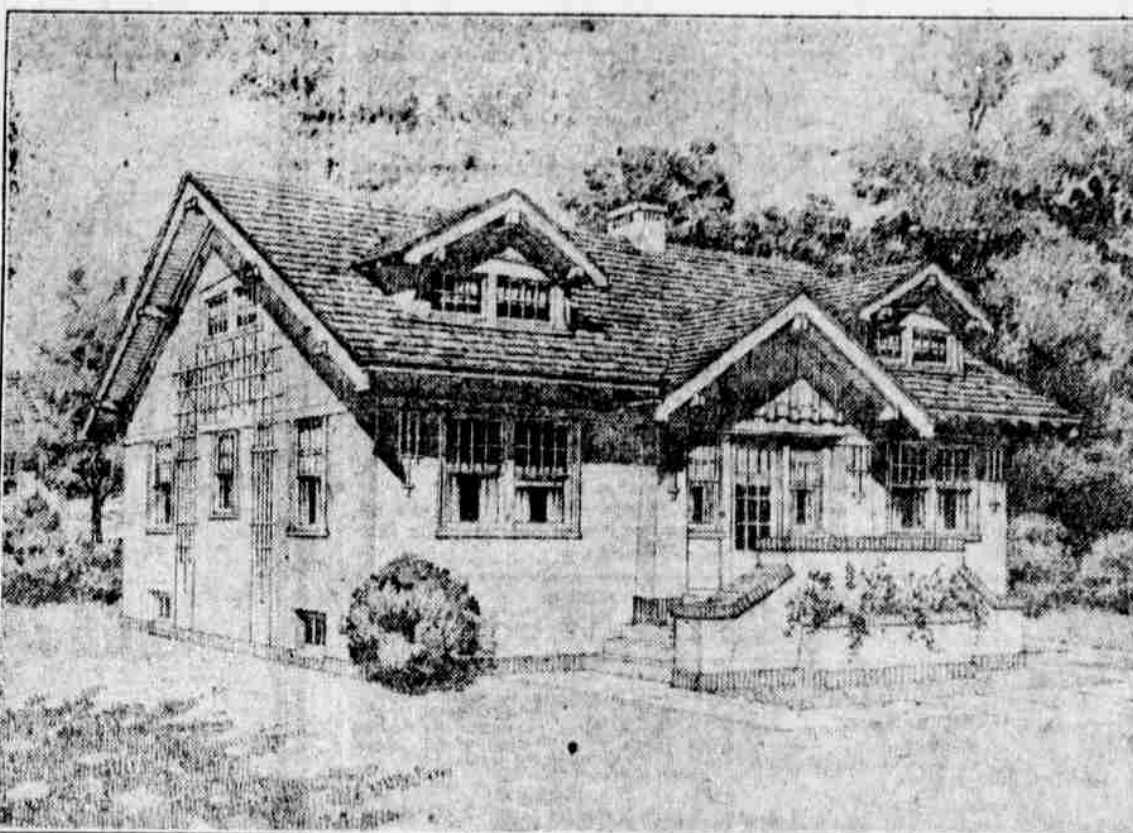
Telephone WA Inut 2971 Estimates Given Free



"Star" Light
on the Heating
Problem

1. Dustproof patented shaking device (waist high).
2. Large double fire door.
3. Leakproof joints on radiator and feed section.
4. Solid one-piece radiator.
5. Smoke connections and cleanout extended through casing with self-sealing cap.
6. Hinged water pan cover.
7. Straight side fire pots.

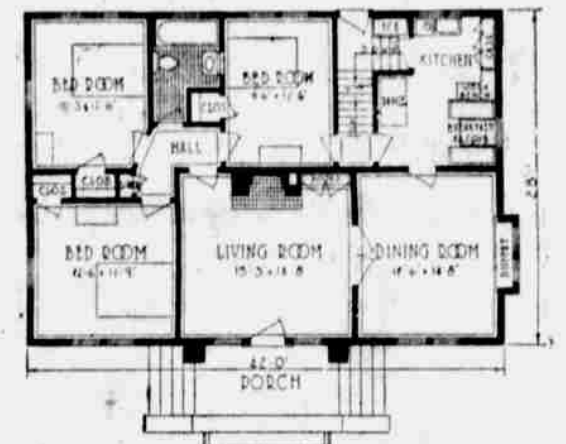
HOMES OF COMFORT



Copyright 1922

No. 1118-A

—By Adams & Kelly Co.



COMPACT CONVENIENCE

If you have a wide lot or a corner lot, you can get an unusual combination of elements of convenience in this roomy six-room home; compactly arranged, on a foundation only 28 feet by 42 feet. A six-room home on one floor is probably the hardest type to plan economically and conveniently. So it is very unusual to find all three bedrooms and bathroom opening into a single hall to provide complete privacy for the sleeping rooms from the living portion.

The bedroom next to the kitchen could be used for a maid's room, although anyone would be glad to have it. You will notice that you can go directly through this room from the kitchen to the hall.

The simple attractive lines of the exterior, decorated by the trellis work, will give a wonderfully homey effect that is carried out by the convenience within.

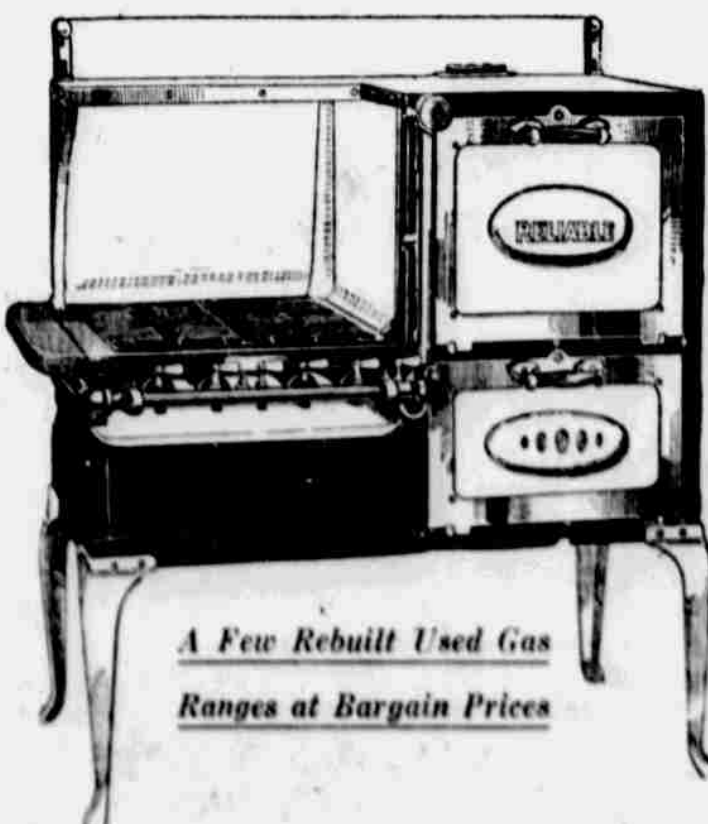
You can get working drawings for "HOMES OF COMFORT" from Adams & Kelly Co., Omaha, from which the home can be built economically and quickly, exactly as shown.

Adams & Kelly Co.

GENASCO SHINGLES
BILT-WELL
MILLWORK
UPSON BOARD

To builders of small homes we offer, first of all, the service of a complete warehouse stock of popular designs, a local factory to make the odd work right here, and the rigid standards of BILT-WELL MILLWORK construction. In addition we help you get the greatest economy, comfort and convenience in the plan of your home, through the BILT-WELL PLAN SERVICE. Isn't such service worth investigating? Just call us, DOUGLAS 1611.

Come Out of the Kitchen and Enjoy More of the Sunny Side of Life



A Few Rebuilt Used Gas
Ranges at Bargain Prices

Buy of Metropolitan Utilities District and Patronize
Your Own Enterprise

Every New Home

Should Be Equipped With a

Reliable Gas Range

with Lorain Oven
Heat Control

We have 138 of these Reliable Ranges which we want to dispose of during August. There are a number of show room and warehouse samples and a few slightly damaged in shipment at greatly reduced prices. The price has been reduced on the entire line.

Prices \$40.00 and Up

Sold on Monthly Payment Plan With Gas Bill

GAS OFFICE

METROPOLITAN UTILITIES DISTRICT

DOUGLAS 0605

1509 Howard Street

UPDIKE Lumber & Coal Co.

Everything With Which to Build

Are you thinking about a new home?

Let us help you find a responsible contractor.

Perhaps you need a garage. Figure with us.

Your problem, whether large or small, will receive our careful attention.

Four Yards to Serve You

**UPDIKE Lumber &
Coal Co.**

4500 Dodge Street

WA Inut 0300