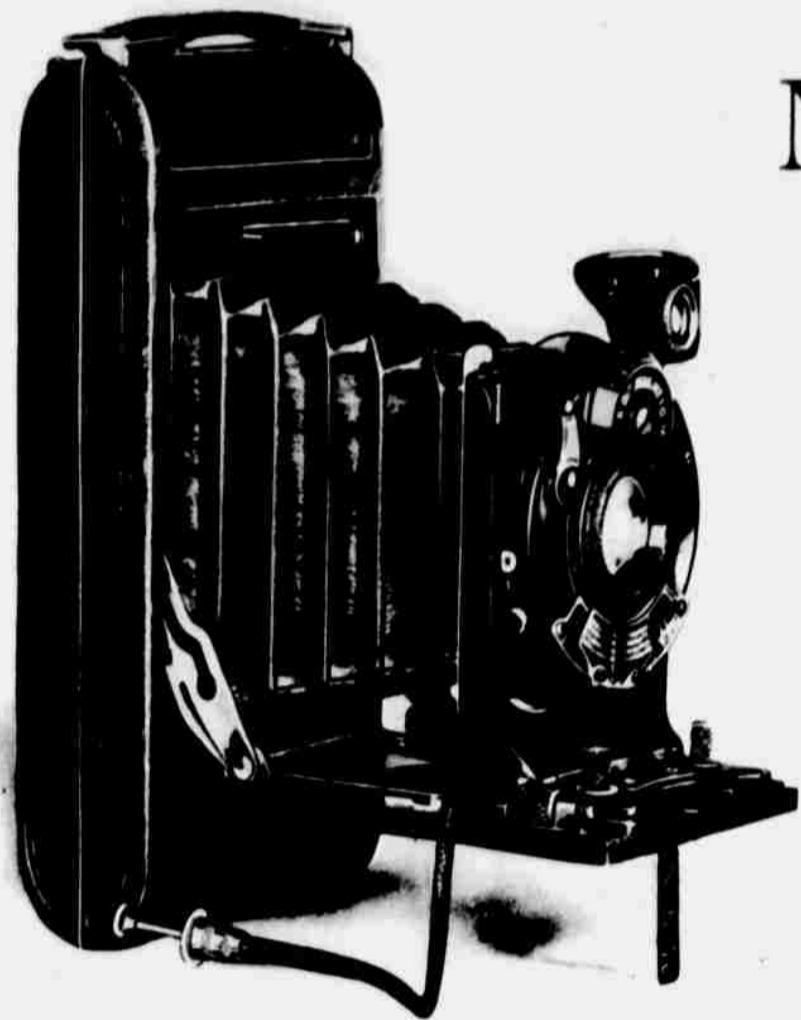




*You scarcely feel it
in your pocket*



No. 1 Autographic KODAK *Special* A New Model

Picture Size $2\frac{1}{4} \times 3\frac{1}{4}$

Price \$50

EXPOSURES as fast as 1-200 of a second and six other adjustable speeds down to 1-2 second, all timed with scientific accuracy, give the No. 1 *Special* a picture range hitherto associated with large cameras only.

Since the introduction of the Kodak thirty-four years ago there has been no more signal achievement in hand camera construction.

The lens: The high-speed, high-quality Kodak Anastigmat lens *f*.6.3, Eastman-made from formula to finish, produces sharp, brilliant, clean-cut pictures—the kind you will be glad to keep and proud to show.

The shutter: Kodamatic shutter has seven adjustable speeds, 1-200, 1-100, 1-50, 1-25, 1-10, 1-5 and 1-2 second as well as time and bulb action, and each speed is absolutely accurate.

An important feature of the Kodamatic is a sliding scale attached to the “stop” indicator, which automatically shows the speed to use for each stop opening under four different light conditions—dull, gray, clear or brilliant.

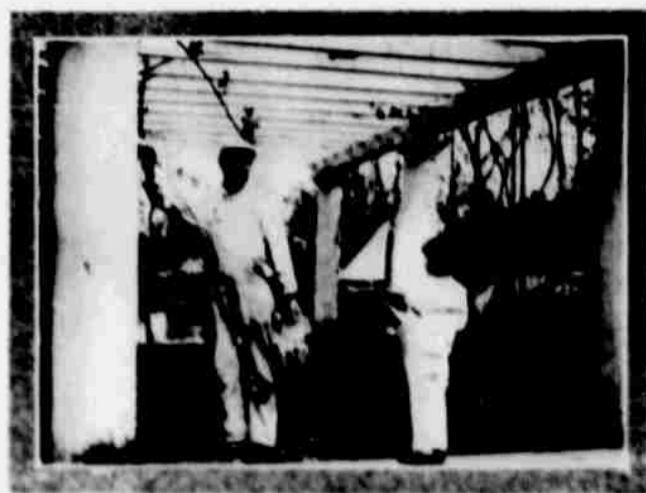
The finish: The aluminum body is covered with finest quality genuine sealskin, while metal parts are finished in nickel and black enamel. The significance of the word “Special” is apparent at first glance. The camera looks the part.

See this *Special* at your dealer's

Eastman Kodak Company, Rochester, N. Y. *The Kodak City*



The No. 1
Special
is smart in
appearance
whether
open or
closed



Made with No. 1 Special, actual size



Made with No. 1 Special, actual size



From No. 1 Special negative
exposure 1-200 of a second