

# Cutouts for the Kiddies

---Every Week---

## DING-DONG BELL—PUSSY'S IN THE WELL



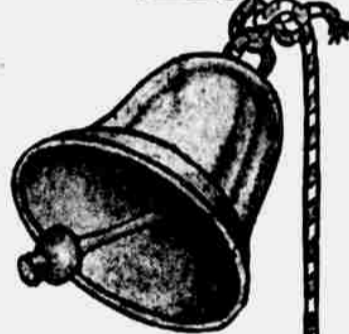
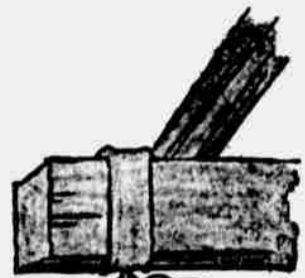
Tommy's other suit got all wet



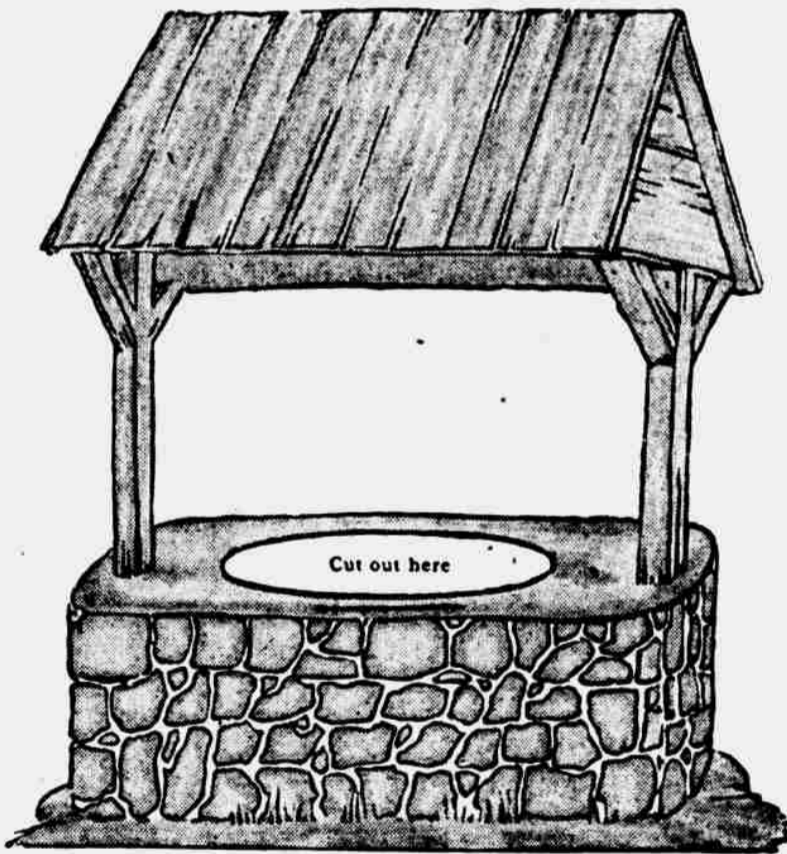
They put a bow on after she was dry



This is how she looked before they threw her in

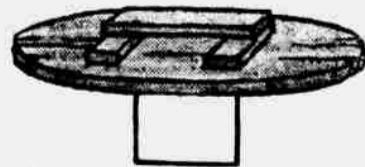


Ding-dong Bell



Little Tommy Stout, who pulled poor Pussy out

This is how poor Pussy looked when she was pulled out



This is the cover to keep Pussy from falling in again



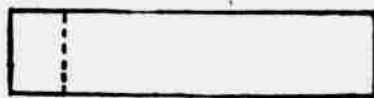
Little Johnny Green (see how ashamed he is)



Tie a piece of thread to the handle and let it down the well



The medal they gave Tommy



And now Pussy always turns her back to Johnny



Suggestion: Paste the figures on linen before cutting out and they will not tear