

New Geyser in Yellowstone Park Is Destructive



During the past winter a powerful new geyser burst forth in the Norris geyser basin, Yellowstone National Park, scalding scores of trees to death and tearing a great gash in the road. It is irregular in its activity and has so far been in eruption by park rangers only; but the results of its forces are plainly evident.

NEBRASKA IN BRIEF

Timely News Culled From All Parts of the State, Reduced for the Busy.

STANDING OF BALL TEAMS AT END OF WEEK.

WESTERN LEAGUE			
	Won	Lost	Pct.
Wichita	29	19	.604
Tulsa	32	22	.595
Omaha	28	22	.560
Oklahoma City	25	21	.543
Des Moines	25	25	.500
St. Joseph	22	29	.431
Sioux City	20	27	.426
Denver	18	34	.346

NEBRASKA STATE LEAGUE			
	Won	Lost	Pct.
Lincoln	25	9	.727
Fairbury	21	13	.618
Norfolk	13	15	.464
Beatrice	16	19	.457
Grand Island	15	21	.417
Hastings	9	21	.300

Work has begun on the Samaritan \$200,000 hospital at Kearney. Negro Baptists of Nebraska held their convention in Omaha from June 17 to 23.

A conservative estimate places the numbers of pupils that will enroll for the summer term of the Chadron State normal at 1,800.

Mrs. C. H. Dietrich of Hastings was elected president of the Nebraska Library commission.

Fifty boy scouts from Lincoln and University Place are spending several days at their summer camp at Louisville, near Omaha.

More than 3,000 chicks have been hatched out by the battery of incubators on the chicken farm of R. L. Cummings of Alexandria.

Guy Raffier, 16, of Valentine was buried alive and died before help came when the clay bank into which he was digging for coyotes caved in.

With more than an inch of rain in 12 hours, the total rainfall for the week in the Scottsbluff country was 2 1/2 inches, a high record for June.

Kearney, has made ample arrangements for taking care of the State Sunday school convention which meets there on the 12th, 13th and 14th.

During May 31,840 hogs were brought to the Omaha stockyards by auto truck an increase of 11,600 brought in by truck for the same month in 1922.

University of Nebraska commencement exercises were held and degrees and certificates conferred on over 1,100 students who concluded their school work.

A new Methodist church building, to cost approximately \$20,000 will soon be erected at Stanton to replace the building that was destroyed by fire this winter.

The State Normal School at Peru has opened for the summer session, nearly 700 students, fifty-five of whom were men, coming on the opening day to start work.

Hessian fly and chinch bugs have become so thick in the wheat fields of Pawnee county that some of the farmers have plowed up their fields and planted them to corn.

Attorneys of Omaha will have a float in the pageant, "Patriotic and Historic America" representing John Marshall, chief justice of the United States from 1801 to 1835.

Frank Jelinek sustained a heavy loss when the large barn on his farm near Berwyn was destroyed by fire resulting from lightning. Four horses in the barn were also burned.

Following a request by the legislature that all expenses incurred in building the new state house be printed and mailed to members of the legislature quarterly, the governor has issued a statement of expenses to June 1, which total nearly \$1,000,000.

The estimated available cost per hundred pounds for hogs on the market last week, that of \$6 1/2 to \$7, is the lowest since November 27, 1911, when it was \$6, according to the local office of the United States Department of Agriculture. Heavy receipts were held partly responsible.

The university of Nebraska school of agriculture has announced that it will offer a new six month's course in practical dressmaking at the beginning of the school year, October 8. The aim of the course will be to prepare women to take up dressmaking in their home communities or to enter dressmaking shops as assistants.

Roy Soucek was seriously injured in his father's store at Seward when his head was caught in an elevator which, usually kept fastened down became loosened and started upward.

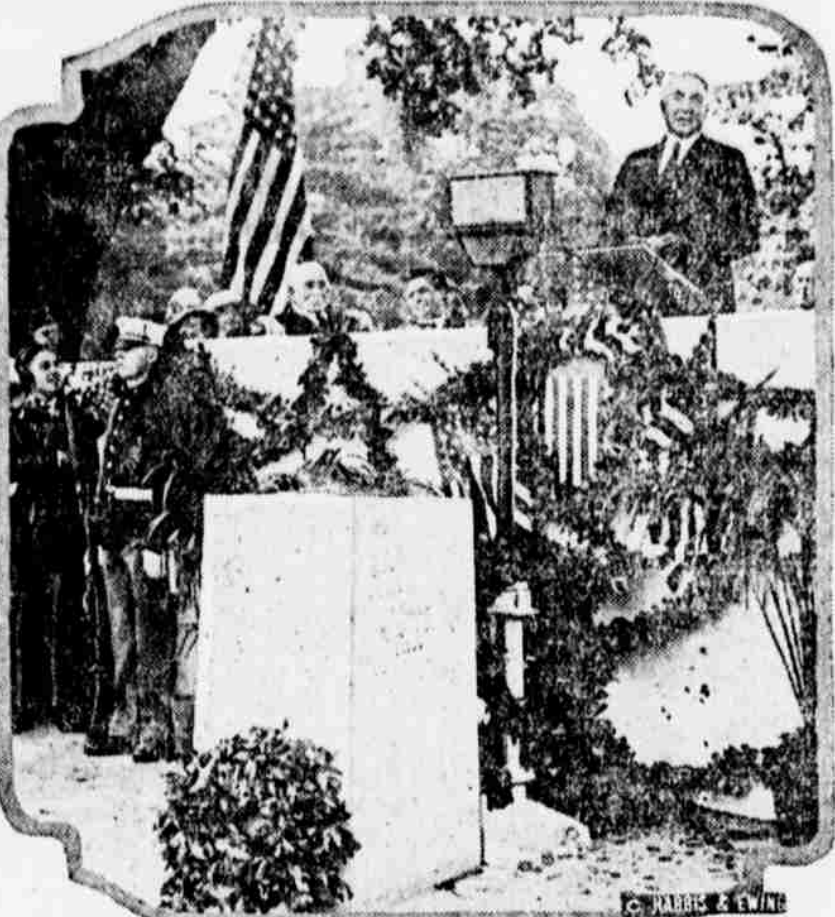
Charles A. Chappell of Minden, was elected grand master of the Grand Lodge, A. F. and A. M. of Nebraska at the session of that body's 66th annual communication at Omaha.

George Anderson, 28, son of A. W. Anderson of Hildreth, was drowned in the Republican river when he fainted while battling a log and fell into the stream, which was rapidly rising from heavy rains.

Lightning did damage to the amount of over \$7,000 when it struck the transmission line of the power company thru Superior and set fire to the large frame farm home of Mrs. J. M. Worden, one and one-half miles from that place.

J. E. Montgomery, thirty-five years old, died at the St. Elizabeth hospital at Lincoln as the result of injuries when an emery stone, on which he was grinding tools, burst. Mr. Montgomery was struck by fragments of the flying stone, the most serious injuries being to his right side and shoulder.

President Accepts Zero Milestone



President Harding making his address at the dedication of the Zero milestone, shown in the foreground, when he accepted this marker of the hub of America's highway system. The great crowd assembled included cabinet officers, Shrine officials and thousands of Shrine visitors to the national capital.

Former Sultan's Home in San Remo



This is the beautiful "Villa Nobel" once the summer home of the inventor of dynamite and father of the Nobel prize, where the ex-sultan of Turkey is living during his sojourn in San Remo, Italy.

Chicago's Former Boss Is Being Tried



After many weeks spent in the selection of a jury, Fred Lundin, noted political boss of Chicago under the Thompson regime, has been put on trial on charges of conspiracy in connection with alleged corrupt practices of former members of the city school board. He is here shown, at left, with his attorney, Charles Erbstein.

ELSIE JANIS MEDALED



By special invitation from the Sorbonne, in Paris, Elsie Janis sang her famous song "Give Me the Moon," before the faculty and students of the venerable institution, and they gave her the Medaille Louis le Grand, which has only twice before been awarded to a woman, once to Mme. Bernhardt and once to Mme. Relane. The illustration shows Miss Janis in her Paris apartment looking at the medal, which is pictured below.

HOUSEWIFE WALKS FAR



One of the features of the Better Homes in America demonstration week in Chicago was a demonstration of the distance traveled each day by the average housewife. Bessie Cooper put on a pedometer and at the day's close found she had walked 14 miles. Then sink, kitchen stove, table, etc., were better arranged and the distance was reduced to eight miles.

FOUNDED GIRL SCOUTS



Miss Juliette Low, founder of the American Girl Scout organization.



Important to See That Goslings Are Kept Dry

Goslings should not be removed from the nest until the third day after hatching, as it is important to see that they are quite dry, and should be kept warm and dry until they are feathered out.

They should not be fed until thirty-six to forty-eight hours old, at the same time be offered a lukewarm drink. Their first few days' feed consists of oatmeal, hard-boiled egg and shorts or bran, thoroughly mixed to a crumbly mass. Lettuce or red clover chopped fine and mixed with the food serves as a tonic and is greatly relished by them. Feed every two or three hours just what they will clean up quickly.

After the first few days the egg may be omitted and the food slightly moistened, but never be fed sloppy, sticky, nor too dry; cornmeal may also be added to the mixture.

After the first week goslings gradually begin feeding cracked corn and shorts or bran, mixed and moistened as stated above; whole wheat may be added to the above mixture, but a great portion should be grass food.

They should not be allowed to get wet; their water should always be fresh but not cold, and plenty of sand should always be near, though the sand should never be mixed with their food.

Goslings require dry and warm quarters at night, at the same time plenty of ventilation, and their quarters kept clean and sanitary; damp quarters will cause them to become lame. Their sleeping compartment is best when thickly bedded with straw.

After the first week, when the weather is warm and dry, they will grow faster when given free range to roam about, for they enjoy feeding on tender green grass.

If hens are used for incubation they should be kept free from lice by frequently dusting them with a good insect powder.

Shade for Young Stock Is of Great Importance

The importance of shade for young stock should be constantly kept in mind, especially for late hatched chicks which have not had an opportunity to get a good start before the scorching weather sets in.

These chicks must be pushed along without a letup, given every advantage of proper feeding and care. If this is done, if they are supplied with fresh water or milk to drink and the founts are kept sterilized and clean and shade is provided they will, in truth, grow like weeds.

A range in the orchard is the best place in which to start them out, after which they can be transferred to the edge of a field of growing corn, provided colony coops are available, and they should be, if you wish the most economical results in raising the young flock.

But shade is imperative and should not be neglected.

Brooder Pneumonia Is Caused by Common Mold

Brooder pneumonia is caused by a common mold present in the incubator, brooder or in straw; often the egg-producing organs are affected by it, so that a chick hatched from an infected egg has the disease. It affects chicks under four weeks old, they become sleepy, with feathers ruffled and the head drawn down; breathing is labored and the windpipe is patched with the mold spores. The disease usually is not cured once it attacks the chicks, and when a brooder is known to be contaminated it should be fumigated, the old straw removed and fresh litter provided, and the poultry dying from this disease should always be burned.

Shed Entirely Open Is Excellent for Turkeys

An open shed or a shed with the south side entirely open, makes an excellent shelter for turkeys. The average turkey lays about three liters a season provided the eggs are removed after each litter is finished. The first litter is usually about 18 eggs, the second 12 and the third 10.

POULTRY POINTS

Good chicks can come only from good parent stock.

Many chicks are handicapped at the start by poor breeding and hatching.

A foot of feeding space for each six hens is about right when it comes to feed hoppers.

The Anconas are good layers and are classed along with the Leghorns in egg production.

The turkey is a small eater for his size. Many of the larger breeds of chickens eat more than the same number of turkeys.

Ducks need to be cozy and warm the first week of their life; they grow quickly and seem to have less resistance to exposure than a chick.

You do not need to change your breed so much as you need to change the males of your breeds. Get new ones from other and better flocks of the same breed.