

CLOTHES

By HAZEL R. LANGDALE

© 1923, by McClure Newspaper Syndicate

Henry let the magazine he had been reading slip to the floor as he reached for his tobacco to fill his pipe. Then he glanced at the clock and put his pouch back in his pocket, unopened. Stretching his arms above his head, he yawned.

"Gosh, Jenny, guess I'll turn in. I've had sort of a hard day at the shop, and it's later than I thought. You mind?"

His wife, over her basket of mending, shook an indifferent head. "Night, Henry. Don't forget to wind the clock and set the alarm. I'll finish here and then read a spell to rest me."

Silence settled on the Crampton household—a silence that lasted long after Jenny had placed a skillful patch on a worn tablecloth, had darned several pairs of Henry's socks, and had read her spell in Henry's discarded magazine.

For as she picked up the book where it lay open on the floor beside her husband's chair, a glaring title caught her eye: "Have you kept your husband's love?" Powerfully as a spoken accusation, it riveted and challenged her attention, and she read the indictment which followed with a breathless fascination. Then, when she had finished the article she laid it down with a deeply indrawn sigh.

Why, that writer had drawn Henry and her! For wasn't Henry getting unromantically on in years, and wasn't she middle-aged and run-down-at-heel and unattractive? And hadn't Henry long ago gotten over showing any of those intimate little signs of affection which women prize? The occasional tender word—the kiss at the door before going away in the morning—the comradely pat on the shoulder now and again?

And there was a warning tacked on at the end of the article. "Be careful," it read, "that your husband, in a sort of second youth, doesn't look for his happiness elsewhere. If he shows signs of sprucing up himself, unmindful of your appearance, beware!"

Absent-mindedly she followed in Henry's footsteps, making sure that doors were locked and bolted. Then she climbed the stair and crept into bed, only to lie there for many wakeful, planning hours.

The next day she experienced a sharp and sudden pang when Henry left the house without even saying good-by.

Late that afternoon, bundle-laden, weary, yet withal exhilarated, Jenny returned from the city. Her feet dragged a bit, but in her eyes was the light of—was it battle or merely feminine anticipation? Shut in her bedroom, she unwrapped her purchases and spread them upon the bed. Then she did various things to her hair, dabbed a bit of powder on her nose, put a polish on finger nails that had been recently manicured, and, finally, she arrayed herself from head to foot in attire that was brand new, rather expensive, and extremely up-to-date.

As she waited for her husband on the little porch the minutes passed slowly. One suburban car after another stopped at the corner and disgorged its passengers. Still no Henry.

Arrived an in-between rush-hour car, which let out only two women and a man in gray. Jenny bit her lip nervously. This was even later than usual. Why—why—that man in gray was stopping at the gate. He had swung it open—was coming up the path! Why, it was—Henry!

Yes, it was Henry in a new gray suit, new hat, new shoes. And even a new lift to his walk, a new set to his shoulders. Jaunty, almost. Yet his expression was that of a man who has been caught red-handed in crime. It set badly with his air of rejuvenation.

Suddenly that expression changed. Amazement, bewilderment, incredulity chased one another across his countenance. Jenny felt impelled to explanation. Then she would demand the same from him.

"I read an article," she said, just a bit defiantly, "about keeping your looks to prolong your husband's love. But you, oh, Henry, what made you?"

Henry drew her gently into the hall within, his arm exerting a tender pressure. "Why, Jenny dear," he said, "I read that same article, and decided that 'what's sauce for the goose,' you know, 'is sauce for the gander!'"

"Henry!" Jenny's voice fairly sang the word. "Wasn't it odd that we both—"

"It sure was," interrupted her husband, hastily. "It sure was."

But considering that Henry had taken pains to drop his magazine open at that particular spot, perhaps it wasn't so very odd, after all!

Niagara Falls. John Thomas, a small lad of Bedford, Ind., on route to join the father at Rochester, N. Y., had been told they would see Niagara falls before reaching Rochester. They were met at the Indianapolis station by friends with whom they were to spend the day. As they drove around the monument, the youngster, his face aglow with enthusiasm, said: "Oh, mother, is that Niagara falls?"

Footprints. "Women are taking a wonderful leadership in affairs of state."

"They are," replied Senator Borah. "Fame has recognized feminine genius. I shouldn't be surprised if in a little while all the footprints in the sands of time were left by high-heeled shoes."

High Prince of Chaldaea Interesting Lecturer for Chautauqua

Sheik Raphael, son of Emanuel, who was the high priest of the temple of Chaldaea, the ancient home of Abraham, between the Tigris and Euphrates rivers, but a short distance from Bagdad, the famous city of the Arabian Nights.

Although his people live today without modern conveniences very much as Abraham did in the days of Old Testament history, the young prince has traveled extensively in Turkey, Persia, Russia, Germany, France, England, Canada, and the United States, speaks fluently in several languages and is a Jew who is a Christian, a Muslim, and a Hindu, which is a unique combination. He has lived and played in the most famous and interesting parts of Mesopotamia which is in the very same region where the Garden of Eden is supposed to have been. His life story and the story of his people is a most interesting and absorbing interest as part of the stories of the Arabian Nights.



C. Rucker Adams and Wife to Demonstrate Health Activity

There will be one feature on the Chautauqua program that ought to interest every man, woman and child in the community and that is the Health Lectures and demonstrations given by Mr. and Mrs. C. Rucker Adams, who are recognized as among the foremost health specialists in the country. They tell and show by demonstrations how to strengthen any of the bodily muscles or functions which are below normal. There is nothing of "fad" in their work, which would cost many times the price of a season ticket and no one should fail to take advantage of the fine opportunity presented.



Mother Lake Strong Chautauqua Attraction

Mrs. Leonora M. Lake, student and advocate of the rights of children, for many years co-laborer with Frances Willard, is one of the greatest women orators in the country and should command a large hearing here. We understand her topic will be "Divine Rights of the Child."

No better investment can be made for your boy or girl than to buy a season ticket for the Chautauqua and let them benefit by and enjoy the good things of both the Junior and Senior Chautauqua programs. One ticket admits to both.

Distinguished Reader Presents Strong Play, "The Man of the Hour"

Prof. I. M. Cochran is head of the Department of Public Speaking of one of the colleges in our northern states which has taken more than its share of the intercollegiate debates. When you have heard him read "The Man of the Hour," with its strong and virile character, its fearless handling of moral questions and its absorbing love story, you will understand why his debating teams have made such a fine record. You will be equally well pleased to hear him in a miscellaneous program. There is nothing "faddy" about his style, but he does get the spirit of the thing in a masterly way and one that completely blots out the reader.



Former Envoy of Korean Emperor on Chautauqua Program

Dr. Humer B. Hubert is announced as one of the lecturers of the Chautauqua program. His vast experience in the principal capitals of Europe and his intimate first-hand knowledge of Oriental conditions, acquired as special envoy of the Korean Emperor, should make his appearance here a real event.



"Give the Boy a Chance" Lecture Topic of Dr. H. Leo Taylor

Dr. Taylor comes from Chicago and feels that the domestic tranquility, religious prosperity and national perpetuity of our country depends on the kind of character built by the boys of today and that the boy is either a national asset or a liability. He sets forth the essential elements of success and should be heard by every boy as well as by every parent.



Equalization Board Hears Complaints

(Continued from first page)

Table with 3 columns: Location, 1921, 1922. Includes Oak Creek, Beaver Creek, Harmony, etc.

On motion it was decided to make the above changes by percentage which would be as follows: Glenwood precinct, land reduced 2%; Potsdam, 2%; Stillwater, 11%; Red Cloud, 14%; Oak Creek, 13%; Beaver Creek, 12%; Harmony, 8%; Catherton, 9%; Elm Creek, no change; Guide Rock precinct, land reduced, 3%; Batin precinct land raised 3%; Cowles, 2%; Walnut Creek, 3%; Garfield, 3%; Line, no change; Pleasant Hill precinct, raised 7%; Inavale, 12%.

This equalization made the land of the county average exactly \$40 per acre. 1921 average was \$11.74 per acre.

The Board now proceeded to consider the complaints on file. Each complaint was gone over carefully and it was found that most of the complaints were from the precinct that were raised considerable over their 1921 assessment.

The reductions as made by the Board as above indicated adjusted most of these complaints. The following is the list where reductions were made:

- Frank Falmon—S 1/2 of NE 1/4, N 1/2 of SE 1/4 sec. 3-4-9, improvements reduced from \$800 to \$400. Louis Kolt NW 1/4 sec. 8-4-10 land reduced from \$9,480 to \$9,000. Carl Lue SW 1/4 25-4-11 land reduced from \$9,560 to \$9,240. C. H. Miner E 1/2 SE 1/4 sec 5-1-11 land reduced \$1,000. E. J. Peterson sec 17-3-12 land reduced from \$22,350 to \$21,070. D. B. Hulsbush SE 1/4 of NE 1/4, NE 1/2 of SE 1/4 sec 3-1-10 land reduced from \$4,720 to \$4,000. Amelia Banks et al NE 1/4 34-4-10 land reduced from \$9,280 to \$8,800. Andrew Stroh NW 1/2 31-4-9 improvements reduced from \$800 to \$550. Fay L. Palmer NE 1/4 18-2-11 land reduced from \$7,040 to \$6,400. James H. Jennings N 1/2 of NW 1/4 16-1-9 land reduced from \$6,280 to \$5,500. Ralph McIlhenny S 1/2 SW 1/4 of lot 8, S 1/2 NE 1/4 SW 1/4 sec 7-1-10 land reduced to \$3,600. John D. Taylor NW 1/4 sec 22-4-11 land reduced from \$10,560 to \$10,080. Viola Maurer et al W 1/2 of sec 23-2-11 land reduced \$1,585. Ernest C. Jones NW 1/4 sec 8-2-10 improvements reduced from \$500 to \$250. John Giger NE 1/4 sec 12-1-10 improvements reduced \$800. C. L. Cotting block 1 Case & McNey's add land reduced from \$600 to \$300. Peter Kock SW 1/4 sec 6-3-12 land reduced from \$10,680 to \$9,815. Fanny M. Woman SW 1/4 sec 18-2-12 improvements reduced \$150.00. Joseph Hill NE 1/4 36-4-9 improvements reduced from \$1,000 to \$800. Geo. J. Benker NW 1/4 sec 9-3-9 improvements reduced from \$900 to \$700. Dewey H. Hutchins W 1/2 NW 1/4 14-2-10 improvements reduced from \$700 to \$500. E. R. Foe SW 1/4 30-3-10 land reduced from \$6,200 to \$5,600. H. F. Meyers SW 1/4 28-4-12 improvements reduced from \$1,000 to \$800.

- June 23, 1922. Will H. Norris N 1/2 of sec 13-2-10 land reduced from \$14,720 to \$13,320. John G. Frey SE 1/4 24-2-10 improvements reduced from \$1,100 to \$1,000. Jacob & Rosina Frey in sec 1-1-10 land reduced from \$9,970 to \$9,470. Adolph Kranan NW 1/4 10-4-11 land reduced from \$8,625 to \$8,000, improvements reduced from \$1,200 to \$1,000. W. E. Thorne sec 6-4-11 land reduced from \$42,240 to \$40,740. Gottlieb Haiz NW 1/4 30-2-9 improvements reduced from \$1,500 to \$1,000. Joseph Hubl SE 1/4 4-4-9 improvements reduced from \$800 to \$600. Albert J. Kindscher N 1/4 SW 1/4 13-2-9 improvements reduced from \$1,500 to \$1,200. Wm. Holtz N 1/4 NE 1/4 17-1-9 land reduced to \$5,000. Thos McMahon E 1/4 25-4-11 land reduced from \$14,720 to \$14,400. M. R. Lewis lot 2 in NW 1/4 11-4-11 land reduced from \$5,265 to \$4,750. Chas. Hendrickson SE 1/4 2-4-11 improvements reduced from \$925 to \$750.00. John F. Fassler NW 1/4 14-4-11 land reduced from \$10,360 to \$9,600. Joseph Hill NE 1/4 36-4-9 improvements reduced from \$1,000 to \$800. John Mattison S 1/2 SE 1/4 31-3-12 improvements reduced from \$250 to \$125. Edward Reiber W 1/2 NE 1/4, NW 1/4, SE 1/4 sec 15-2-11 land reduced from \$12,880 to \$12,560. Joe Kohmetscher SW 1/4 24-4-9 improvements reduced from \$1,500 to \$1,300, S 1/2 NE 1/4, NW 26-4-9 improvements reduced from \$1,300 to \$1,100. Max F. Benker NW 1/4 19-4-9 improvements reduced from \$1,000 to \$800. Alvin A. Frey SE 1/4 25-2-10 improvements reduced from \$1,100 to \$800. Wm. C. Kiehl lots 3 to 8 Vance's add to Guide Rock land reduced to \$1,050. J. J. Boem SE 1/4 NW 1/4 19-1-9 strike off assessment on improvements. Wm. Crabill W 1/2 of NW 1/4 and N 1/2 of SW 1/4 of sec 28-2-11 land reduced to \$6,720. Geo. Shepardson all sec 6-1-12 land reduced from \$27,900 to \$25,000. Ed. J. Gerlach SE 1/4 13-3-10 land reduced from \$7,600 to \$7,200, improvements reduced from \$2,000 to \$1,500, NW 1/4 24-3-10 land reduced from \$7,500 to \$7,000. Wm. Spilker W 1/4 SE 1/4, W 1/4 SW 1/4

COAL We Sell Niggerhead Maitland And Routt County Lump We sell for cash that's why we sell cheaper. FARMERS ELEVATOR

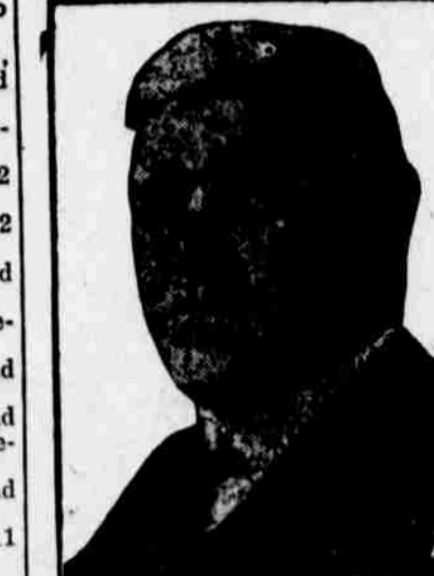
Get Acquainted Order Blank FOR NEW SUBSCRIBERS Date THE LINCOLN STAR, Lincoln, Nebr. Enclosed is 75 cents, for which send me by mail your daily edition, every day but Sunday for three months, with the understanding that the paper will stop when the time is up unless I order it continued. Name R. B. F. O. D. X. Town State (Write plainly, in pencil. Ink blots.) P. S.—Add 25 cents to above amount if Sunday is desired)

- 22-3-10 improvements reduced from \$600 to \$300. Christina Waechter NE 1/4 4-4-11 land reduced from \$10,565 to \$9,735. NE 1/4 26-4-11 land reduced to \$10,760. L. P. Whiting NE 1/4 11-1-9 land reduced to \$10,120. Carl Schmidt SW 1/4 18-3-11 land reduced to \$4,000, improvements reduced to \$600. A. H. Alexander E 1/2 SE 1/4 8-3-11 land reduced to \$3,360. Alfred Phillips SW 1/4 21-2-11 land reduced to \$8,440. N. Blankenbaker NW 1/4 29-2-12 improvements reduced to \$200. O. E. Ramey NE 1/4 of SW 1/4 20-2-11 land reduced to \$1,800. Martin Kaufman in sec 8-3-11 land reduced to \$8,920 improvements reduced to \$600. Wm. Morrow SW 1/4 23-4-11 land reduced from \$12,035 to \$11,035. Isaac Davidson E 1/2 of sec 13-4-11 land reduced to \$16,320. John Hansen W 1/2 SW 1/4 7-3-11 land reduced from \$3,155 to \$2,400, NW 1/4 18-3-11 land reduced from \$5,320 to \$4,840, improvements \$900 to \$700. A. B. Crabill S 1/2 of SW 1/4 28-2-11 land reduced to \$3,220. F. W. Kruger NW 1/4 4-3-10 improvements reduced from \$1,000 to \$800. John Zimmerman SW 1/4 1-2-9 strike off \$100 for improvements. Ludwig Benker NE 1/4 4-3-9 improvements reduced from \$1,500 to \$1,300. J. M. Mills NE 1/4, NW 1/4, W 1/2 NE 1/4 19-3-10 land reduced from \$4,320 to \$4,000. Wm. Blabaum E 1/2, SE 1/4, E 1/2 W 1/2, SE 1/4 24-3-10 improvements reduced from \$1,000 to \$800. Joham Goos SE 1/4 20-4-9 improvements reduced from \$800 to \$600. John W. Mitchell lot 7 in sec 2-1-12 land reduced to \$1,875. Aug. Wonderfecht NW 1/4 6-4-12 land reduced to \$6,280. Z. R. Mayo E 1/2 NW 1/4 3-2-12 land reduced to \$1,880. Jos. Hubatka NW 1/4 8-4-11 land reduced from \$11,560 to \$11,240. J. A. McArthur NW 1/4 24-2-11 land reduced to \$7,200. Newton Bragg SE 1/4 sec 2-1-9 land reduced to \$7,740 improvements reduced to \$500. H. H. Crowell W 1/2 of 4-2-11 land reduced to \$14,720. Yancey Sorgeson E 1/2 NE 1/4 28-2-11 land reduced to \$2,600. Fred Hedge SE 1/4 23-2-11 land reduced to \$7,300. Nellie McClure N 1/4 NW 1/4 SW 1/4 NW 1/4 SW 1/4 in sec 20-2-11 land reduced to \$5,540. Wm. A. May Jr NW 1/4 11-4-11 land reduced from \$3,495 to \$3,000. Mary David S 1/2 of sec 3-4-12 land reduced to \$17,400. No further business appearing the County Assessor was instructed to make the correction as made by the Board of Equalization after which his books are accepted and he was instructed to proceed and make his abstract to the state. Board adjourned to the call of the County Clerk. B. F. PERRY

Dr. R. V. Nicholson DENTIST Red Cloud Nebraska

The Margin of Safety Is represented by the amount of insurance you carry. Don't lull yourself into a fancied security. Because fire has never touched you it doesn't follow that you're immune Tomorrow—no today, if you have time—and you better find time—come to the office and we'll write a policy on your house, furniture, store or merchandise. —LATER MAY BE TOO LATE— O. C. TEEL Reliable Insurance

Self-Made Man!



ALBERT W. JEFFERIS Republican Candidate for U.S. SENATE.

Mr. Jefferis is a product of his own efforts. From a farmer boy he rose to Congress. He is a self-made man.

"ONE OF US."

Delaney Bros., shipped one car of hogs to Kansas City Sunday and A. B. Crabill shipped three cars of hogs to St. Joe. F. M. Ellinger and G. B. Owens accompanied the shipment to market.

Red Cloud Chautauqua Attractions