



A Newspaper That Gives The News Fifty-two Weeks Each Year For \$2.00

VOLUME 48.

RED CLOUD, NEBRASKA, JULY 8, 1920

NUMBER 28

Ted Lewis Makes a Date in Cuba



Come in and hear the latest fox-trots by Ted Lewis' Jazz Band. "I'll See You in C-U-B-A," with melodious incidental whistling by Ted Lewis himself, and "The Moon Shines on the Moonshine" by these same exclusive Columbia artists, are a pure delight to dance to.

A-2927—\$1.00

Other Good Records

J. C. MITCHELL
The Jeweler

Columbia Phonographs

Columbia Records

Base Ball "Dope"

Sunday's game with Superior, on the field drew a good crowd, as it was rumored that the home team was loaded with good, professional ball players, who through several bone-head plays and errors, coupled with a few by Red Cloud's non-salaried players lost the game for the home team.

On Monday afternoon they played the return game at Superior, with Schrader on the mound for the Red Cloud team, who pitched a very good game. Superior won the game by a score of 4 to 0. While it rests in the hands of the umpire to render the decisions, it is the opinion of many of the fans—some of them Superior men—that if it had not been that the "Ump" gave his home team the long benefit of the doubt, the score would have been different at the close of the game.

Tuesday evening the home ball players and business men held a meeting in the club rooms and re-organized the ball team, for the balance of the season. Dr. Hearst was elected manager and Lloyd Barker secretary and treasurer. The boys propose to cut out the salaried players and use all home men on the team. Messrs Herzog, Check and Nolan will be on the pitching staff, while Charles Pitchler will be adorned with the catcher's mask and mit.

They will play the Franklin team on the local diamond Sunday afternoon. Come out and see the game but leave your hammer at home and bring your horn. If the citizens will boost the home boys, instead of knocking, perhaps we will have a few good games—any way let's try it.

COMMISSIONERS' PROCEEDINGS

Red Cloud, July 2, 1920
The County Board of Commissioners met as per adjournment at 1 o'clock p. m., with all members present.

The appointment of L. W. Breakey as Deputy County Treasurer was approved by the Board.

The report of James Keagle, Road-oviseer of District No. 9 was approved by the Board.

In the matter of the Plainview Cemetery Association the Board on June 25, 1920, viewed the cemetery premises and land adjacent thereto and upon actual view of the premises, we find and determine that the addition to said cemetery as prayed for in said petition is a public necessity and we do find and determine the value of one acre of land situated on the west and south side of the Plainview Cemetery Association more particularly described as follows to-wit: Commencing 20 rods west of the N. E. corner of the S. W. 1/4, section 29-4-11, thence south 16 rods, thence east 20 rods, thence south 6 rods, 14.15 feet, thence west 21 rods, thence north 22 rods, 14.15 feet, thence east to place of beginning at \$200, and the damage to the growing crop thereon at \$25 making a total of \$225 as damages to be paid by the Plainview Cemetery Association to the County Clerk of said county for the benefit of the owner of said land on the first day of August 1920, when the above described and shall thereafter be a part of the Plainview Cemetery Association.

The following claims were audited and allowed and County Clerk instructed to draw warrants on the proper funds in payment of same:

GENERAL FUND	
Judges, Clerks primary	\$865.95
M. B. Corner	225.00
F. L. Stokes	180.00
E. H. Funke, Sr.	324.35
Seth Green	305.50
W. R. Brooks	60.00
B. E. Harrington	105.00
Geo. Hefflebower	135.00
J. W. McIntyre	95.50
R. H. Allen	170.67
T. J. Chaplin	90.50
Chris Schaefer	160.00
Adolph Sidlo	170.40
W. E. Patterson	115.70
J. T. Lacy	80.50
O. C. Cochrane	116.50
Sherman Shipman	182.50
E. Peters	225.00
J. H. Portenier	170.40
Henry R. Fausch	301.80
Grant, Fulton & Letton	9.10
May L. Huffer	90.00
Annie B. Spanogle	83.32
L. R. Willis	22.50
C. F. Cather	6.00
O. C. Teel	6.00
Stella Ducker	590.31
C. A. Herrick	397.80
Dr. Robt. Damerell	11.00
Fred E. Maurer	6.00
R. P. Hoxsey	35.00
Alvin Hudson	6.20
A. B. Martin	6.20
Ralph Rose	1.20
Henry Wright	4.20
Henry Getsring	4.20
Claus Van Boening	4.20
John C. Rose	4.20
Anno Meents	4.20
Geo. Smith	4.00
Western Book Asso.	20.00
Blue Hill Leader	16.33
Seth Green	2.25
C. E. Vaughan	8.50
E. McBride	8.50
O. C. Teel	6.50
Thos. Friend	1.75
C. Fassler	6.00
Smith & McKimney	46.15
Rubon Woodfin:ing Co.	4.04
J. I. Holcomb Mfg. Co.	7.62
Zion Institution	55.11
A. D. Ranney	8.50
Remington Typewriter Co.	25.05
Morhart Bros.	175.30
Omaha School Supply Co.	24.06
Callahan & Co.	40.00
Bladen Enterprise	50.56

(Continued on page 8)

A Chance for the Children

Prof. Holtzen offers an opportunity to the boys and girls who wish to earn their season ticket to the Chautauqua. Not only this but they will have a chance to win some of the premiums that he is offering. To the one who sells the most tickets a prize of \$2 will be given. The next three highest will receive \$1 each. A premium will also be given for each adult or child's season ticket sold, in addition to the premiums mentioned above. The Professor requests that the boys and girls meet him at his home at 10 a. m., July 12th where tickets and further information may be had.

The prices of season tickets are adults \$2.50, children \$1.10. When one stops to consider that there will be seven days, or a total of 14 entertainments given, the average price per entertainment is only 18 cents. This is a mere trifle considering the high class entertainment that is offered.

FARMERS ASKED TO BE PREPARED TO HOLD GRAIN

The Nebraska State Railway Commission requests that we confer a favor on farmers of this vicinity by calling attention to the absolute necessity of being prepared to hold all or a large part of their small grain indefinitely. The Commission states: "This year's crop will move more tardily than crops of previous years. Ordinarily enough cars are stored on sidetracks in Nebraska this time of the year to handle one-third of the wheat crop quickly. This year there is no surplus. The causes are (1) largely increased volume of business in the country compared to pre-war times, and (2) actual reduction in total rolling stock available because of war necessities. Relief cannot be immediate. The Nebraska Commission and the Interstate Commerce Commission will jointly do all possible to expediate crop movement, but their effort will, obviously, have limited results. Shippers owe it to themselves to protect their harvest against loss due to lack of storage and we think they will do so if properly advised of the gravity of the transportation situation."

Christian Church Services
Sunday School at 10 a. m.
History of Christian Church, 11 a. m.

Give Our Jewelry

Recount your own treasures that your heart holds dear---a Watch, a Pin, a Ring---and you will give lasting presents to those of whom you are fond.

JEWELRY is the thing to give

Our store is the place to buy it, because you can absolutely depend upon the Quality, Style and price of any piece you buy from us.

Your Satisfaction or Your Money Back!

E. H. Newhouse

Red Cloud Jeweler and Optometrist Nebraska

The Big Three

Quality In order to measure up to the demands of the buying public of today any piece of merchandise must give satisfaction in every way. If it does not it is stricken from the list of desirable merchandise. The goods we handle possess this **QUALITY**.

Service The service we tender our patrons, even to the 'kiddies' is known to all. Our aim at all times, is to give you wants very prompt and careful attention.

Price The price is figured as low as it is possible to make it---when you consider that our merchandise is the best the market affords. You are protected not only by our years of successful grocery experience, but also by our guarantee of your satisfaction.

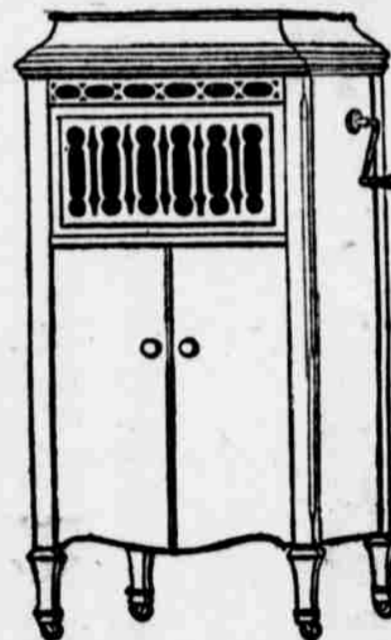
P. A. Wullbrandt
Groceries and Queensware

GOOD PICTURES

Its just as easy to make good pictures---when you KNOW HOW---as to spoil one. We are in the class that "knows how."

The Gleason Studio

Over Smith's Shoe Store



Music Must Be Wooded--Not Gouged

---and we know that this matter may be safely left to the verdict of your ears---once you hear PATHE.

It is a question, indeed, if the now famous Pathe Freres had made known the secret of the sapphire when other less careful men were rushing the manufacture of talking machines, there would never have been a steel needle machine offered to the public.

What is the absolute commercial proof of Pathe's success? Not for that the Pathe plant at Brooklyn, N. Y. had to multiply its manufacturing facilities sixteen times in three years.

After all, the real enjoyment of music cannot exist where there is constant fear; the fear of damaging the records and the endless distraction of changing the needles.

"Don't use the needle more than once"
"Don't scratch the record with the needle"
"Don't start machine until needle is in place"
---and the hundred other don't's have made a labor out of listening to what mighty soon ceases to be music when it has been needle-scratched a few times.

PATHE 'THE PHONOGRAPH'

needs neither needles to buy nor to change. The PATHE SAPPHIRE never scratches or wears out itself or the records, which are guaranteed to play a thousand times---the result always being perfect music.



Red Cloud **GRICE & GRIMES** Nebraska
PATHE PHONOGRAPHS --- AND PATHE RECORDS

The Price of Lumber

and building material is so much less than it has been and the prospects for it going much lower is so slight that we feel justified in advising you to build now

PLATT & FREES