

Geo. Trine

RED CLOUD

We believe that it pays to give our customers service and satisfaction; that is why we want to sell you a

DE LAVAL CREAM SEPARATOR

Users of De Laval Cream Separators have carried away every first prize awarded at conventions of the National Creamery Buttermakers' Association during the last twenty-five years. The record is unbroken.

That ought to be proof enough that cream separated by the De Laval is superior to any other.



The reason is that De Laval bowl design, together with low speed, enable the delivery of butter-fat globules unbroken in their natural condition.

The NEW De Laval is the "blue-ribbon" separator.

You can buy a NEW De Laval from us on liberal terms. Come in and look it over and see how the Bell Speed-Indicator works.

THE RED CLOUD CHIEF
Red Cloud, Nebraska

PUBLISHED EVERY THURSDAY
Entered in the Postoffice at Red Cloud, Neb. as Second Class Matter

A. B. MCARTHUR, Editor and Owner

THE ONLY DEMOCRATIC PAPER IN WEBSTER COUNTY

Farm Improvements Will Aid in Readjustment

Farm products have a greater purchasing power today than ever before in the country's history. This may explain why rural districts of the country rapidly are getting under way with building and construction work. It is obvious, since building and construction work have such an important bearing at this time on stimulating general business, the farmer may serve both his own and the national interest by at once making needed improvements on his property. He can further the general welfare, while assuring himself of immediate and permanent benefits, in urging road construction and improvements in his locality.

It is generally understood no material reduction may be expected in building and construction costs in the near future. To be sure, prices on some materials may be slightly reduced in the readjustment, but the best authorities on the subject assert no pronounced reductions are probable. This is explained by money conditions, the foreign demand, and the marked curtailment of production of building materials during the war. Prof. Fisher of Yale University has issued a statement in which he says the country is on a new price level from which there will be no general recession.

Many farmers have been unable to get materials and labor for barns, silos, houses and other improvements during the war. The farmer who at once avails of the labor supply and gets his improvement work under way, in the long run, may prove to be the prudent business man, for there is reason to believe that farmers who delay in the hope of materially reduced construction costs will have been deprived of the use of these improvements and in the end be forced to pay approximately the building prices now prevailing.

In several states, among them Missouri, Oregon and Colorado, silo building campaigns are being carried on by the Agriculture colleges. In Wisconsin there is a milk house campaign being vigorously prosecuted in the dairy districts, while in Illinois farmers are being urged to build feeding floors. Other campaigns for farm improvements are on in Nebraska, Kansas, Minnesota, South Dakota, Kentucky, Ohio and in localities in Texas and Iowa. While many of these are being conducted by building interests, the Division of Public Works and Construction Development of the U. S. Department of Labor is interested in seeing them successfully carried out because the Division realizes such activities on the farms are bound to have a beneficial effect on general business conditions.

The farmers of the country should have an unusual interest in road building at this time. If farming is to continue on its present profitable level, there must be no business stagnation in the country and the vast road building projects in the various States are destined to exert a profound influence in keeping "business as usual" or "better than usual." Road building creates a demand for materials and absorbs labor, and the labor problem is a serious one at present and will continue serious until America industries have readjusted themselves to peace production on a scale to meet the augmented demand of America and Europe.

The Trans-Mississippi Readjustment Congress, held in Omaha, Neb., late in February, summarized the present situation in the following language:

"We do not favor a pause in the

AN UP-BUILDING FORCE

Regardless of climate or environment, Nature exacts her toll of wear and tear on the system and there is frequent need for an effectual aid to restore strength and vitality.

SCOTT'S EMULSION

a systemic strengthener, free from alcohol, nourishes and replenishes the needs of the body naturally. Scott's may be used daily, in any climate, with benefit and strength to the body. Take Scott's Emulsion—it builds up the body.



Scott & Bowne, Bloomfield, N. Y.

industrial process to await some future readjustment of wages and prices of staples. So far as public improvements are concerned, they should be resumed at once. It is better that the public should absorb the increased cost, if any should hereafter appear, than that general unemployment and consequent disaster and social disorder should follow.

"We believe also that the promoters of private construction and business enlargement should take heart of courage and should believe in the immediate resumption of business prosperity in the United States. There is no place in the American scheme of things for the pessimist or the doubter. Our country today leads the world in prosperity. It can lose its leadership only by its own faint-heartedness. We especially deprecate any concerted holding back of construction and business resumption, for the purpose of forcing a reduction in wages or cost of material.

"Both as a means of stimulating the resumption of industry and removing the shadow of unemployment from the working people and also serve the broader and more permanent purpose of supplementing the railroad lines and to develop the inland and farm commerce of the country, the work of constructing good roads should be promptly carried on by cooperation of the Federal and State Governments and local communities."

In the recent Conference of Governors and Mayors in Washington and local communities."

In the recent Conference of Governors and Mayors in Washington, it was apparent that these executives were disposed to go in for extensive road and public improvements campaigns in their respective districts. These can be made a success only when they are supported by the citizens. For this reason, the farmer, as well as the city dweller, who understands how importantly building and construction work now is affecting general business conditions, will back up his local officials in every reasonable campaign for road building and public works of a necessary sort.

Farm Bureau Notes

ANNUAL MEETING WEBSTER COUNTY FARM BUREAU, SATURDAY, APRIL 12, IN THE COURT ROOM OF THE COURTHOUSE.

WHAT IS THE FARM BUREAU?

The Farm Bureau is an institution devoted entirely to farm problems. It is composed of, and managed by farmers. Membership in the Farm Bureau is open to any farmer who wishes to enroll and is willing to take part in the Farm Bureau affairs. There are no membership fees.

Any institution, to accomplish the best results, must have an organization. The Farm Bureau now has a very complete system.

FARM BUREAU DIRECTORS

The Webster County Farm Bureau has one director representing each of the seven towns of the county. This director is nominated by the farmers tributary to their town and elected by the county at large. The Directors select their President, Vice-president and Secretary from their number.

LOCAL LEADERS

Each Farmers' Union Organization, and communities not having a Farmers' Union, but is designated as a community center, has a Local Leader. This Local Leader is appointed by the Farm Bureau Board and commissioned as a chief co-operator by the Department of Agriculture.

SCHOOL DISTRICT CO-OPERATORS

In each school district there is a School District Co-operator. He is selected by the Farm Bureau Board and is commissioned by the Governor. Every part of the county is in this way well represented and no farmer need go far to get in touch with the Farm Bureau.

THE COUNTY AGENT

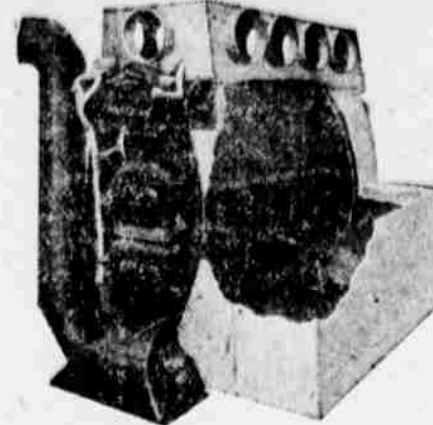
The County Agent is hired by the Board of Directors of the Farm Bureau. This board also directs his work. The County Agent gives his time looking after the interests of the farmers in the county. His work is to help them in solving their problems, bring to them the best experiences of other farmers and also the results of investigations and experiments carried on by the Experiment Stations and the Department of Agriculture.

FARM BUREAU SUPPORT

The Farm Bureau has the combined support of the Federal Government, the state and the county. It is recognized as an effective means of improving the agriculture of our country. There are 2,500 county agents in the United States representing 80 per cent of the Agricultural Counties.

THE SUCCESS OF FARM BUREAU WORK IN ANY COUNTY DEPENDS UPON TWO THINGS: FIRST, THE ABILITY AND FAITHFULNESS OF THE COUNTY AGENT. SECOND, THE SUPPORT GIVEN TO THE WORK BY THE FARMERS OF THE COUNTY. WITHOUT THIS SUPPORT THE

Heat Health Economy



Before you place your order for your new Heating Plant give the matter careful thought. House heating is no longer a matter of guess work, or an experiment. It has become a science.

Our space in The Chief for the next few weeks will be devoted to a discussion of the latest notable achievement in the science of house-heating and its relation to the health of the home.

No heating system is good enough unless it is "RIGHT". It is something your family must live with. No other single effort means as much to your household. Our greatest struggle is against ill-health. It is expensive. It stands in the way of happiness and prosperity. Fresh air is cheap—after you have the system installed.

Study the points of FarQuar Sanitary Heating System. The worst gas poison in the house comes from the fire. It is a product of combustion, being one of the oxides of carbon. It is known by various names—"Carbon Monoxide," "Carbonic Oxide," "Carbonic Anhydride, etc. You are unconscious of its undermining influence in your body until the harm is done—some weakened parts gives way and you "go to pieces".

Cast iron is porous and will not prevent the escape of this penetrating gas. The intense heat keeps the pores always open.

FarQuar fire boxes are made of metal that does not permit this gas to escape. The FarQuar fire box is welded at the seams. It is imperforate. It has self-closing doors and drafts for protection against reckless management.

Step in and let us tell you more about the "superior points" of the FarQuar Sanitary Heating System.

E. W. STEVENS
Plumbing Heating Everything Electrical

MOVED!

We are now located on Main Street in the Koontz Building and are

Better Prepared than Ever to handle your Cream and Produce.

You can Store your car in our Building for 10 cts. We carry a line of Gasoline and Oils.

Salt and Posts ordered in Carload lots

Those who have not received their dividends for last year's business can now receive them.

Farmers' Union Co-operative Ass'n.
(INCORPORATED.)

Hastings Pop and Soda Water Reduced in Price

In view of the high cost of materials and products the Hastings Bottling Works have announced a decrease in price, per case, of their product.

This month the Western Bottling Works resumed their manufacture of Pop. They closed last fall owing to sugar shortage, preferring to close their plant rather than use substitutes in the manufacture of their product. This week they put their product out to the trade at 75 cents per case, making it possible for the dealers to again resume the sale of 5 cent Pop. During the time they were closed Pop retailed at 8 cents per bottle.

Two days following the reopening of the Western Bottling Works, manufacturers of Kohl Pop, the Hastings Bottling Works announced a price of 70 cents per case. The Hastings Bottling Works did not close during the sugar crisis but continued to manufacture their product and placed it on the market, to retailers in Hastings, at 90 cents per case, prohibiting the standard popular retail price of 5 cents per bottle.

Hastings—the Pop Centre—Offers Not Cheaper Pop BUT Pop at a Cheaper Price
DON'T PAY MORE THAN 5c PER BOTTLE FOR POP

MOST CAPABLE COUNTY AGENT August to take the place of the annual social meeting. This excursion will last a week and will start from Omaha, with Gering as the objective point.

Henry R. Fausch, County Agricultural Agent
The Nebraska Press Association is planning a tour of western Nebraska Standard Milk Meal for calves and the latter part of July or first of poultry at Cotting's.

House Dresses

True Worth's House Dresses and Aprons. TRADE MARK REG. U.S. PAT. OFF.



Mrs. Barbara Phares

Open Day and Night

DINE

AT OUR CAFE

Powell & Pope

Service Sunday at the Christian Church

The Revival closes for a short time to allow the church to aid in caring for the patients. If you are not afraid of the flu come to the Sunday service. Don't neglect the sick. The Revival Campaign will continue as soon as health conditions warrant.

J. L. BEEBE, Pastor.