

We invite you to view our  
**SPRING DISPLAY OF MILLINERY**  
**Thursday, March 11, 1915**

**AMERICAN MODES IN MILLINERY**

This spring season finds us with as charming array of hats as we have ever shown. American hats, every one of them. American modes, created to suit the American women of refinement. We shall be particularly glad to show you this line of becoming new spring hats at moderate prices.

**MRS. J. A. BURDEN**



**Dr. Price's  
 CREAM  
 BAKING POWDER**

For sixty years Dr. Price's Cream Baking Powder has been the standby of countless housekeepers who have relied upon it for healthful, home-baked food.

Dr. Price's contains no alum or lime phosphate. There is never any question about the absolute purity and healthfulness of the food it raises.

**THE RED CLOUD CHIEF**  
 Red Cloud, Nebraska

PUBLISHED EVERY THURSDAY  
 Entered in the Postoffice at Red Cloud, Neb., as Second Class Matter

A. B. McARTHUR PUBLISHER

THE ONLY DEMOCRATIC PAPER IN WEBSTER COUNTY

The first of March is moving day but please do not mention the fact this year unless you whisper. Moving is a sad affair at any time, but what's the use, you know how it is.

We have a great country and we certainly are patriotic but no one would ever dream that we were by looking at the poles on the schools or court house. We would like to see a real flag once more.

We notice that Bro. Dedrick of the Superior Express has been virtually appointed post master of Superior, which will call for the glad hand from all the newspaper men of the state. The Chief is pleased and "may you live long and happy."

With the heaviest fall of snow in years evenly distributed over our fields, it does not take a prophet, nor the son of a prophet to predict bumper crops of wheat, oats and alfalfa the coming season. Fully fourteen inches has already fallen which lays almost as uniform on the ground as a carpet on a floor. Our people are jubilant at the prospects and all agree that it is the best thing that has happened in years. It is a bit difficult to go around and the sun would be cheered if he made us a visit but taking it all together "it'll do."

The business men's banquet will be served by the domestic science class next Tuesday at the Washington school at 12 o'clock. The men will have first hand information as to the ability of this class. It is in reality a test of the efficiency of this branch of schooling and if the men are satisfied that these high school girls can cook we may safely assert that this course is established for all time. Incidentally we imagine that some of our citizens will see the inside of our school building for the first time in their lives.

Suppose we hadn't ever heard about this blooming war; suppose the cables had been cut, that ran from shore to shore; if Europe wants to scrap around and spend its cash in fun; if Europe wants to make it off look like copper land, then we should worry quite a bit about the fighting game; We guess the great United States can go on just the same. We're big enough and strong enough and have enough of it. We need the stuff the farmers raise, the farmers need the shops. So let's forget about the war, the battles and the bombs, and keep on doing business here until the tempest calms.

**Board of Education  
 Writes a Protest**

The school board has addressed the following letter to our representatives in the state legislature:  
 "In a communication addressed to the Normal Training High School, State Superintendent A. O. Thomas announces that the House Committee on Finance has cut the appropriation for Normal Training Schools from \$125,000 to \$75,000 for the coming biennium. Heretofore the state has paid \$500 annually in part payment of the expense incurred by the Red Cloud High School in offering courses specially fitted for the training of teachers. The cut by the Finance Committee in the above appropriation will reduce our annual allowance from \$3.0 to less than \$2.00 which places only an additional burden upon our tax payers. Forty five per cent of the rural teachers of Webster county are graduates from the Normal Training Course of the Red Cloud High School, and we believe that no money spent by the State of Nebraska is more far reaching in its influence and usefulness than that spent for making our rural teachers more efficient. Believing that such a policy of economy on the part of the state is unwise and harmful, the Board of Education of the Red Cloud schools respectfully request you to use all honorable means to prevent a reduction on the appropriation for Normal Training."

**Notice.**  
 The patrons of school district No. 2 are hereby called to meet in the Washington building, Friday, March 12th, at 4 p. m., for the purpose of nominating two candidates for the board of education and to transact any other business that may come before the meeting.  
 Henry Gilham, E. J. Overing, Jr.,  
 President. Secretary.

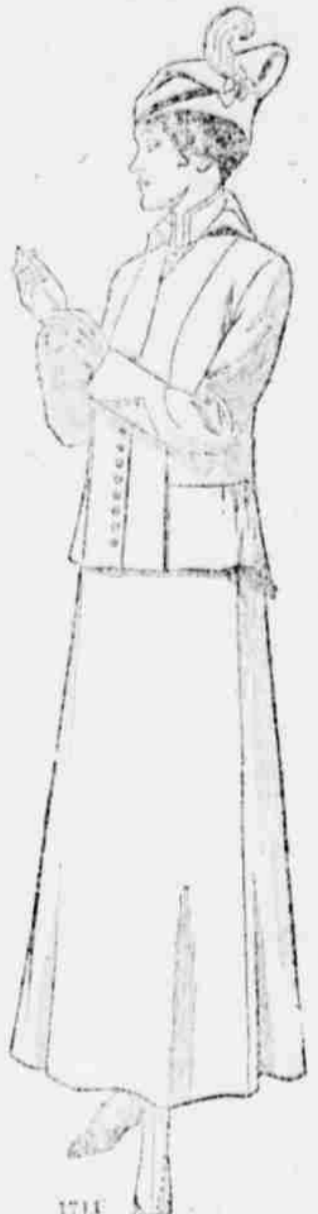
**Real Estate Transfers.**

Real Estate Transfers furnished by M. W. Carter, Bonded Abstractor, Red Cloud, Nebraska.  
 Fern Blankensaker and Husb., Inez L. Strickland, Ralph E. Strickland, Roy A. Strickland, Rose Warthen and husband, Grover Strickland, and Effie Nelson and husband, to Frank A. Strickland, qsd, sw 1/4 9-1-9 ..... \$ 3500  
 Ida L. Gilmore and husband to Samuel G. Somerhalder, wd, lot 1 and pt lot 2, Blk. 3, Vance's Add to Guide Rock... 2100  
 H. R. Ruyle and wife to Arthur H. Ruyle, wd, lot 5 in sw 1/4 19-4-12 ..... 1  
 Robert E. Rowland to Charles Schnase, wd, sec 1/4 2-4-10..... 16000  
 Charles Schnase and wife to Robert E. Rowland, wd, pt sec 1/4 5-4-10..... 8700  
 Hiram Hendricks and wife to Charles Hendricks, wd, undivided 1/2 interest in sec 1/4 2-4-11.... 8600  
 Andrew J. Mefford to Mrs. Lena B. Keagle, wd, lots 13 to 18, inclusive, in Blk. 2, Smith & Moore's Add Red Cloud..... 900  
 John M. Martin to Philip H. Bock, wd, nw 1/4 29-1-9..... 3700  
 Philip H. Bock and wife to John M. Martin, wd, lots 5, 6, Blk. 2 Rohrer's Add to Blue Hill..... 2000  
 Samuel F. James and wife to Minnie Stebenaw, wd, n 1/2 sec 1/4 11-4-10..... 5000  
 James F. Buckles and wife to Alex Buckles, wd, pt sec 1/4 13-3-11 and pt sec 1/4 2-3-11..... 1  
 James F. Buckles and wife to Enoch D. Buckles, wd, pt sec 1/4 2-3-11..... 1  
 James F. Buckles and wife to James D. Buckles, wd, pt sec 1/4 13-3-11..... 1  
 Joseph F. Swoboda and wife to Albert J. Swoboda, wd, sec 1/4 1-4-9..... 6500  
 Jos. F. Swoboda and wife to Frank A. Swoboda, wd, w 1/2 sec 1/4 1-4-9..... 6500  
 Ollie Kilgous to Emma Garner, wd, pt sw 1/4 35-2-12 ..... 1600  
 J. W. Garner to Emma Garner, wd, nw 1/4, pt sec 1/4, pt sw 1/4 34-2-12 ..... 1  
 Charles L. Hawkins and wife to H. Andres, wd, sec 1/4 ne 1/4 3-1-9 ..... 2700  
 Bessie O. Mann and Husb. to Clark J. Shimeal, pt sw 1/4 35-2-11 ..... 1  
 E. P. Denton and wife to Joseph A. Denton, wd, ne 1/4 2-4-12 ..... 1  
 E. P. Denton and wife to Joseph A. Denton, wd, nw 1/4 2-4-12..... 9000  
 Maris L. Denton and Husb. to George E. Denton, et al, wd, nw 1/4 11-4-12 ..... 1  
 William McCallum and wife to Henry Erickson, wd, lot 1, 20-3-11..... 8400  
 Mortgages Filed \$56,300.00,  
 Mortgages Released \$34,922.50.

**The Miner Bros. Co.**

The Store That Sells Wooltex  
 Red Cloud, Nebraska

**Tired of sombre winter clothes?**  
 Then see this week's advance display of Wooltex fashions



IT IS your first opportunity to get acquainted with the correct modes for Spring.

Style—Authoritative Style—as expressed by the leading fashion authorities of the world, is shown in these new Wooltex models.

These genteel, smartly tailored garments will instantly meet the approval of every woman of refinement who desires to be well dressed and yet not over-dressed.

Short-lived fads, extremes and freaks find no place in the Wooltex line, for Wooltex styles are made for service at least through a full season?

Wooltex quality cannot be equalled at these prices, for Wooltex garments are so carefully tailored, inside and out, that they retain their shapeliness and trim appearance much longer than ordinary garments made in the ordinary way.

Why pay more for ordinary clothes when you can buy Wooltex at moderate prices?

WOOLTEX COATS      WOOLTEX SUITS      WOOLTEX SKIRTS

**The Red Cloud Schools  
 And Cost of Maintenance**

The greatest asset Red Cloud has today is her school and particularly her High School. In homes, in business blocks, in churches, as a commercial center, as a farming community or in industrial progression Red Cloud is neither better nor worse than hundreds of other towns in the state. But its school spirit and school system gives it an enviable position as compared to other cities in the state. In educational interests and as a High School center it has but two competitors, namely, Ord and Pawnee City. The valued placed upon a school system in any community is measured by the per cent. of children of school age who attend school, and the number of nonresident who attend our school in preference to any other. The number of our children who stay in school and the number of nonresident who attend our school is entirely governed by the kind of school service rendered, namely, is it practical, diversified and efficient. Show us a school that has a high school enrollment far in excess of all its neighbors as compared to its population and we will show you a school that renders the above threefold service. High School enrollment and average attendance is an infallible barometer which measures school EFFICIENCY.

In order that we may rank our own school with others in the state, the following statistical information is taken from the State School Directory on which to base our comparisons:

City	School Population	No. of Teachers Employed	High School Enrollment	Tax Levy
Pawnee City	562	18	253	25
Holdrege	663	22	161	25
Central City	675	22	175	31
Ord	692	18	215	27
Wahoo	693	18	160	23
RED CLOUD	716	20	307	25
Superior	730	20	165	30
Wymore	753	20	102	25
Aurora	808	25	214	27
Chadron	855	18	88	31
Schuyler	920	20	138	24
Plattsmouth	960	31	190	30
Blair	954	28	189	30
Auburn	925	24	174	28
McCook	1147	28	191	36
Benson	1150	26	105	30
Alliance	1402	29	168	45
Falls City	1327	33	105	26
Columbus	2017	33	204	26
Norfolk	2033	38	184	45
Average Tax Levy				29

As may be seen from the above table Red Cloud as an educational center stands with two others in a class by itself.

In order to give our schools such an enviable position in the state, has our school board been extravagant or has the tax levy been excessive. Please note that in the tax levies above quoted as taken from the State Superintendent's records, only two schools have a levy less than 25 mills, while the average for the state is 29 mills. Red Cloud has maintained her schools on a 25 mill levy without license money, while our sister cities have, with few exceptions, received in addition to the above levies from one to eight thousand dollars license money from saloons.  
 ECONOMY has been the keynote of the present administration in as far as it has been consistent with efficiency.  
 R. D. MORI'Z.

**PUBLIC SALE**

The undersigned will sell at public auction on the J. H. Cray farm, one mile north of Guide Rock, and 10 miles east of Red Cloud, the following described property on

**Thursday, March 11**

COMMENCING AT 10 O'CLOCK  
**83 HEAD OF CATTLE**

One of the best herds of high grade Herefords in the valley. 22 head of cows will be fresh in the spring. 7 head with calves at side. 16 coming yearlings. 11 fall and winter calves.

**HOGS**  
 31 Immune Poland Chinas, 15 brood sows 15 shoats, 1 thoroughbred Registered boar.

**HORSES**  
 Black horse, 13 yrs old, wt 1300. Span grey horses, 11 and 12 yrs old, wt 2150. grey mare, 10 yrs old, wt 1400. span mules, 7 yrs old, wt 2350. black mare, 2 yrs old, wt 1250. black horse 2 yrs old, wt 1250. sorrel driving horse, well broke single or double, wt 1100.

**IMPLEMENTS**  
 Moline lister, 2 1-row cultivators, Standard mowing machine, 2 hay bucks, feed grinder will ear or shelled corn, McCormick corn binder, Sharpless cream separator, 2 sets work harness, set single buggy harness, set single fly nets, 2 sets double fly nets and numerous other articles.

TERMS—\$10 and under cash; over that amount a credit of 8 months at 10 per cent will be given on approved security.

**ALBERT GOPLIN**  
 Col. G. G. Denny, Auct.      S. G. Somerhalder, Clerk

**Dr. Nicholson**  
 DENTIST

OFFICE OVER ALBRIGHT'S STORE  
 IN RIVERTON ON MONDAY

**DR. DEARDORF**  
 VETERINARY SURGEON

Graduate Chicago Veterinary College  
 TWELVE YEARS EXPERIENCE  
 AT BAILEY'S TIE BARN