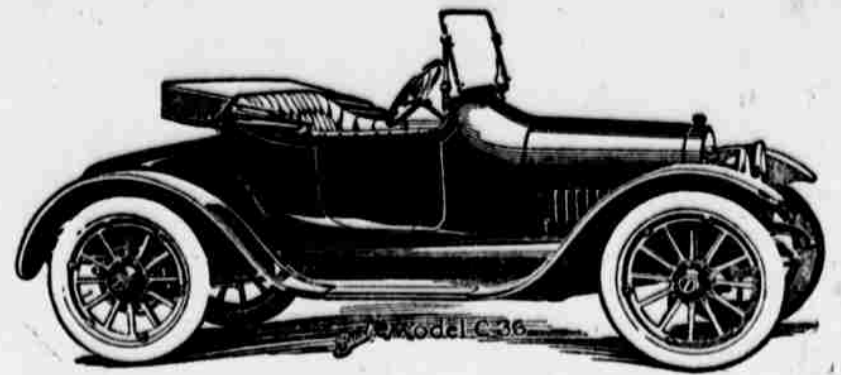


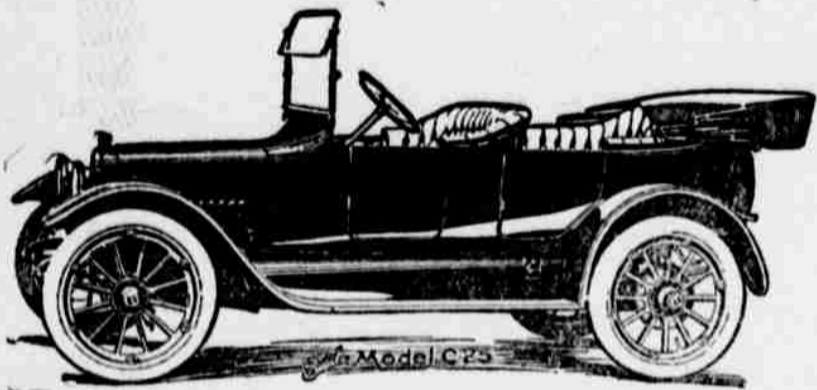
**DON'T FAIL
TO SEE**



T H E N E W

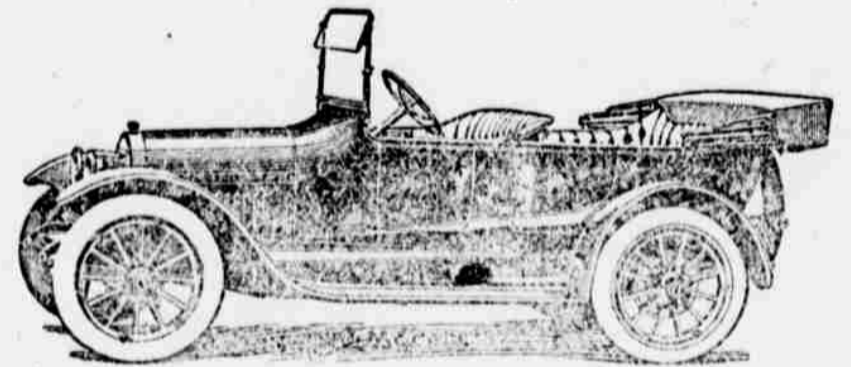


**Which Is Now On Exhibition at the Red Cloud Auto Company
SHE IS A "BEAUT"**



An ideal family vehicle at a price that places it within reach of anyone. Plenty of room for five and plenty of power for any load. Wheel base 106 inches, 33x3 1/2 tires, anti-skid in rear, 23 brake test H. P., complete electric equipment. Delco system, new windshield, inside top curtains, and every other feature necessary to make it a car for the family.

**The
Red Cloud Auto Co.
G. F. Walker, Mgr.**



A beautiful streamline body, with graceful cowl; extra wide deep seats, advanced ideas in design and every detail making for utility, places this car at once in a class of its own. 35 actual brake test H. P., 34x4 tires, anti-skid in rear wheel base 112 inches. Full Delco equipment for starting and lights. Inside curtains, new shield and every feature of notable excellence.

**How Red Cross Seal Money
is Spent**

For the benefit of the numerous organizations who helped to sell nearly 45,000,000 Red Cross Seals last year and for the general public, the American Red Cross and the National Association for the Study and Prevention of Tuberculosis have framed a definition of anti-tuberculosis work showing how the proceeds from these holiday stickers are to be used. The definition limits the expenditure of money only for the year ending April 30, 1915.

The definition was framed at a recent meeting of The National Association for the Study and Prevention of Tuberculosis and states that the term "anti-tuberculosis work" as it relates to the expenditure of Red Cross Seal money shall include the following activities:

1. The construction of hospitals or sanatoria for the care of the tuberculous.
2. The maintenance of the tuberculous.
3. The provision of day or night camps for the tuberculous; the provision and maintenance of dispensaries, visiting nurses, open air schools, fresh air classes, or sanatoria for the care or for the prevention of the spread of tuberculosis.
4. The maintenance of educational or legislative activities which have for their object the prevention of infection with tuberculosis.

Dr. Charles J. Hatfield, executive secretary of The National Association says in commenting on this definition: "We hope by this means to prevent the spreading, particularly of small sums of money, in useless activities, and to direct the efforts of all anti-tuberculosis agencies along the lines which will produce most results for the money invested. We are in thorough sympathy and co-operation with every movement for better community or individual health, but if this Red Cross Seal money is to be spent, as we advertise, only for tuberculosis work, we wish to see that it is expended to the best advantage."

**Amount of Water Used by
Corn**

A corn plant may use as much as 10 pounds of water on a hot, windy day in Nebraska according to the display of the department of experimental agronomy, Nebraska College of Agriculture, at the State Fair this year.

This amount varies to only three and a half pounds on a cool, cloudy day. Additional data showed that the greatest amount of water is used about 2 o'clock in the afternoon. The amounts fall off during the morning and evening, and scarcely any is used at night. The variation is due largely to natural weather conditions. The highest temperature, lowest humidity, and highest wind velocity during the middle of the day account for the large use at 2 o'clock.

**Fight Spring Garden Pests
Now**

Now is the time to begin fighting the garden insect and other pests of next spring and summer by burning all refuse and by spading or plowing. Refuse furnishes wintering quarters for many insect pests both in their adult and larval stages. If such litter is cleared away as soon as possible, these pests will be deprived of protection and will largely perish by exposure to the elements. The pupae of other insects are buried just below the surface



**We Are Looking For
The Man**

Who has soiled his clothes so badly that they are not fit to wear. No matter how dirty or greasy the suit may be we are equipped with the most modern machinery and have skilled workmen who know how to

**Clean, Repair and Press
Clothes**

**R. G. Hassinger
Cleaner and Dyer
Both Phones**

of the ground. If the garden is spaded these will be exposed to the birds and weather. Such treatment should be given not only to the garden but as far as possible to all the closely adjoining land. The Nebraska College of Agriculture advises that if such practices are resorted to this fall much annoyance may be saved next spring.

Why Diversified Farming

Why it is better for the farmer to raise more than one main crop rather than depend upon one is seen from the yields obtained by the department of experimental agronomy at the Nebraska Experiment Station:

- 1910—Corn yield 52 bushels; wheat, 48.
- 1911—Corn yield 45 bushels; wheat, 51.
- 1912—Corn yield 48 bushels; wheat, 50.
- 1913—Corn yield 9 bushels; wheat, 50.

It would appear from these figures that the farmer who sowed the larger portion of his land to wheat in 1912 would have done far better if he had planted corn. In 1913 his wheat would have done far better than his corn, on the average. Since at the beginning of the season, the farmer has no means of knowing which crop will give the largest returns, it would be better for him to avail himself of two chances, or more if possible, rather than to risk one.



FIRE
THE ALARM is a dreadful thing for the man without insurance. Every time he sees the engines racing along his heart comes up in his throat if the fire is anywhere near his place. What folly, what mistaken economy.
THE COST OF INSURANCE is so small that it need hardly be considered. The freedom from worry alone is worth it many times over. Have us insure you to-day.
**O. C. TEEL,
Reliable Insurance.**

**Strong "Pull"
and Drawing
Power in All
of Our Printing**



*We Make a Specialty of
Printing Neat and
Attractive Sale Bills*

NOT ALL advertising matter is consigned to the waste basket. Some of it finds a place in the files of the receipt or on his desk or his table. The printing upon which one can depend to win this distinction is of the out-of-the-ordinary class, the well-designed and well-executed example of the printing art. Every business man desires that his printing should have what is known as "pulling" power; that is, it should accomplish its intended mission, namely, to set forth the value of goods and secure orders for those goods. The printing we do is of the kind that win the coveted place at the elbow of the prospective customer. Try us.

The Red Cloud Chief
Red Cloud, Nebraska

**CAMP
THE
CHIROPRACTOR**

Red Cloud, -:- Nebraska

Second House North of I. O. O. F. Hall

-O-

**Consultation and
Spinal Analysis Free**

-O-

Phone Ind. 212

Kind of Him.

"I am going to ask your father for your hand." "Oh, that will be lovely." "You are glad?" "Delighted! I will call and bring you flowers every day until you are able to be out again. I have never seen the inside of a hospital!"

**Dr. Nicholson
DENTIST**

OFFICE OVER ALBRIGHT'S STORE
IN RIVERTON ON SUNDAY

Red Cloud, Nebraska

**DR. CHAS. E. CROSS
DENTIST**

OVER STATE BANK

Red Cloud - - - Nebraska

E. S. Garber

Real Estate, Farm Loans
and Insurance.

Red Cloud, - Nebraska.

**DR. DEARDORF
VETERINARY SURGEON**

Graduate Chicago Veterinary College

TWELVE YEARS EXPERIENCE

AT BAILEY'S TIE BARN

Red Cloud -:- Nebraska

**Dr. J. C. Caldwell
PHYSICIAN & SURGEON**

Calls Answered Day or Night

Office Telephones: Bell, 58; Ind. 150.
Res. Telephones: Bell, Red 273; Ind. 100.
Office Over M. A. Albright's Store

Red Cloud, -:- Nebraska