

The campaign for the primary election is now begun. April will soon be here and this reminds us that the people of Nebraska are practically making a business of politics. We are engaged in political battles six months twice a year and yet complain of the high cost of living. After a while we will not be able to find the time to do the chores and then we will be compelled to ask our eastern relatives and friends to ship us in provisions just as they did when we were afflicted with the other kind of a drouth. These elections are expensive and the cry of the taxpayer can be heard in every nick and corner of the state. "Four years and out" would make a popular plank in any party platform. The candidate for the legislature who voices that sentiment and election every two years, other things being equal, will receive flattering endorsement. We are going election mad and it is high time a change is made.

We very much wish that the gentlemen whom we named a few weeks ago will complete the organization of a county commercial club. Aside from being a benefit to the county in general this organization would do much to unify the towns in the county. Then, too, each town would gain because it would learn how the other towns were meeting the problems which are common to all. For instance, down at Guide Rock, the merchants collectively purchase calanders and give them out with the compliments of the city thus saving hundreds of dollars. How this is done would be of interest and profit to the others.

After organization, and after a few of the main projects will have been disposed of, there would be many issues of interest present themselves for solution and the county club would find that it would have plenty of opportunity to serve the county. We are pleased that the other papers of the county have taken kindly to the suggestion and with their assistance this club could be a real success. In order to get the matter started we suggest that all the gentlemen named write to Mr. John S. Marsh of Guide Rock stating when they would be ready to attend the first meeting and appoint Cowles as the first meeting place.

This city is confronted with the same condition which existed when it was first organized—namely it will have every office to fill at the spring election. Mayor, all the councilmen, treasurer, clerk and all the rest. Here is the opportunity which the business men have so long desired. A time to elect a full business board who will give the city an administration that will meet the approval of all. Many of us do not realize the problems which must be constantly met and many of us do not realize that city officials must sacrifice considerable time in looking after city affairs. Let the business men get together, adopt a plan for the years work, and

then stand squarely with the men elected. We can see no valid reason why any business man should hesitate to accept a nomination this year. It is a duty to serve a community which serves you by helping to carry out a careful economic policy as it is by paying taxes. This is the best opportunity that could be presented of electing a full force of officials of one mind and of one opinion. Let all strife and discord disappear, let by gones be by gones and let us all help the Commercial Advertiser make Red Cloud a city of ten thousand by 1920.

The new course of study as adopted for our city high school is without question the best ever offered to the pupils of this and surrounding districts. It meets the needs of our home people much better than ever before. It provides for the boy and girl who expects to make a home in Webster county and that means fully seventy five percent of our children. Manual training, commercial arithmetic, business English will be of more benefit to this community than all the orations of Cicero, the odes of Horace or the antics of Caesar. We do not wish to abolish cultural education but we do rejoice because the practical has been placed side by side, and of equal importance, with the so called cultural courses. The present crowded condition of our school is due largely to the fact that this practical course is provided which has the effect of keeping the boys and girls in school. The population of this city is practically the same as it was twenty years ago and yet the enrollment in the schools is much higher than ever before. The attendance in the high school, leaving out non-residents, is more than double what it was in the nineties and we believe the choice of courses offered has much to do with this condition. When the taxpayer discovers that a graduate of the high school can correctly add a column of figures the first trials, can write a sensible letter or keep a set of books, he will feel that his money has not been spent in vain. The Red Cloud school is one of the few schools in the state which has perceived the need of the people and has met it with a satisfactory course.

Do not fail to make preparations to attend the Farmer's Institute this year which will be held here December 18, 19, and 20. The Institute will be even better than last year. Cattle, sheep and goats have been added to the hog, horse and poultry show and the institute will be a success. Last year the attendance was over five thousand and this year will undoubtedly exceed that number by several thousand. The Farmer's Institute is the most important organization in the country. We are an agricultural people and we depend upon the soil to make our living and our prosperity depends upon the manner in which we cultivate our resources. At the Institute all learn to do things in the best way. Each learns from the experience of the other and besides this the instructors from the state university are paid by the state to make experiments and we all receive the benefit of their findings.

That much can yet be learned in regard to farming this great state is easily understood when it is remembered that statistics show that the average yield per acre is less today than it was in 1875. The acreage is larger now but the yield is smaller. This is also true of Iowa and Missouri yet no one believes that our soil is poorer now than it was then. Not only will our culture of corn be discussed but also that of wheat, oats and alfalfa and all the cereals and live stock. The horse and cattle show alone will be worth going miles to see. Remember the date and come prepared to get all you can. Every thing free and many valuable premiums will be given away. Both the barn and the new building just being erected by Newhouse Bros have been turned over to the managers of the Institute and there will be plenty of room. These three large buildings will be full of exhibits the largest ever shown in the county. COME.

Franklin Now Has Electric Lights
 Franklin's municipal lighting plant was put in operation for the first time Saturday night, and is sure working in fine shape. But very little trouble has been experienced so far, and the plant could support more than double the service it is now giving. Fifty-one street lamps and over five hundred interior lamps are now being used. This should be a paying proposition in a short time, and persons who have been waiting to see whether the plant would be a success before taking light can do so now with perfect confidence. —Franklin County News.

Freelife It Falls
Your Money Back If You are not Satisfied with the Medicine We Recommend
 We are so positive that our remedy will permanently relieve constipation, no matter how chronic it may be, that we offer to furnish the medicine at our expense should it fail to produce satisfaction.

AUTHORITATIVE Styles in Suits and Coats

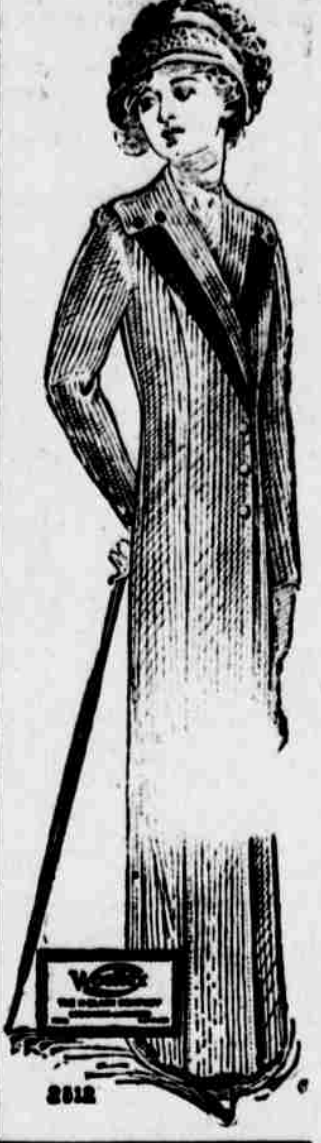


We now have a most complete and attractive line of Womens Suits and Coats.

The best in line, in quality of fabric, in style and in workmanship that eastern factories can manufacture. Smartness, modishness characterize every line! We carefully examined the Suits and Coats of the most reputable Eastern women's tailors before buying; we compared lines, fabrics, workmanship, lining—in short every detail of the garment, before buying! Needless to say, you're assured the best that money can buy!

Made of Serges, Cheviots, and Mixtures, in the most practical of fall colors. Some are plainly tailored; others show dressy little touches of braids and trimmings.

Ideal Suits and Coats in weight, color and style for Fall and Winter wear. Other departments are equally able to supply your wants.



The Miner Brothers Company GENERAL MERCHANTS "A Mighty Safe Place to Trade"

factory results.
 It is worse than useless to attempt to cure constipation with cathartic drugs. Laxatives or cathartics do much harm. They cause a reaction, irritate, and weaken the bowels and tend to make constipation more chronic. Besides, their use becomes a habit that is dangerous.
 Constipation is caused by a weakness of the nerves and muscles of the large intestine or descending colon. To expect permanent relief you must therefore tone up and strengthen these organs and restore them to healthier activity.
 We want you to try Rexall Orderlies on our recommendation. They are exceedingly pleasant to take, being eaten like candy, and are ideal for children, delicate persons and old folks, as well as for the robust. They act directly on the nerve and muscles of the bowel. They apparently have a neutral action on other organs or glands. They do not purge, cause excessive looseness, nor create any inconvenience whatever. They may be taken at any time, day or night. They will positively relieve chronic or habitual constipation, if not of surgical variety, and the myriads of associate or dependent chronic ailments, if taken with regularity for a reasonable length of time. 12 tablets 10 cts; 36 tablets 25 cts; 89 tablets 50 cts. Sold in Red Cloud only at our store—The Rexall Store. The H. E. Grice Drug Co.

Real Estate Transfers.
 Transfers for the week ending Wednesday, November 15, 1911.
 Fred Blobaum to Lula Blobaum, wd to ne 1/4, 24-3-10, 1000.00
 L. E. Spence et al to Glen H. Phelps, wd to lots 14-15, Blk. 1, Spence & Bennetts add to Bladen, 682.50
 Jacob G. Bortoff and wife to W. H. Buys, wd pt 1/2 of nw 1/4, 17-4-12, 5000.00
 Aldro E. Turner to E. R. Slawson, wd to lots 4-5-6, Garbar's add to Red Cloud and lot 19 of annex to Red Cloud, 3000.00
 J. M. Burgess and wife to Sherman Workman, wd to s 1/4, et seq, ne 1/4 nw 1/4, 20-2-12, 14000.00
 F. A. Good and wife to M. R. Adamson, wd to lot 5, Blk. 10, Cowles, 400.00
 N. V. Anderson and wife to F. A. Good, wd to lots 5, 6, 7, Blk. 10, Cowles, 1500.00
 William P. Kennedy to Earl R. Slawson, wd to lot 7, Blk. 3, Yoisers add to Red Cloud, 25.00
 Jacob Goll and wife to Albert Kort, wd to lot 7, Blk. 3, Robrer's add to Blue Hill, Charles M. Smith and wife to J. L. Howard, wd to s 1/2 Blk. 32, Red Cloud, 5000.00
 Lyra C. Garber and W. S. Garber to Joseph Topham, qcd to lots 10-11-12, Blk. 1, Garber's add to Red Cloud, 1.00

Mortgages filed, \$25605.00
 Mortgages released, \$4787.50

Official Vote For Webster County, November 7, 1911.

| CANDIDATES | Guide Rock | Beaver Creek | Stillwater | Garfield | Overlook | Edna Creek | Pleasant Hill | Line | Red Cloud | Bath | Walnut Creek | Harmony | Red Cloud, 1st ward | Red Cloud, 2d ward | Total Vote | Plurality or Majority | | | | |
|---|------------|--------------|------------|----------|----------|------------|---------------|------|-----------|------|--------------|---------|---------------------|--------------------|------------|-----------------------|----|-----|------|------|
| For Judges Supreme Court | | | | | | | | | | | | | | | | | | | | |
| Francis G. Hamer, rep. | 98 | 38 | 41 | 49 | 36 | 31 | 48 | 50 | 82 | 32 | 76 | 34 | 35 | 46 | 23 | 32 | 75 | 112 | 1026 | |
| Charles B. Letton, rep. | 141 | 50 | 43 | 51 | 37 | 32 | 60 | 62 | 96 | 43 | 87 | 37 | 98 | 36 | 68 | 32 | 37 | 91 | 137 | 1238 |
| Wm. B. Rose, rep. | 144 | 48 | 44 | 52 | 38 | 35 | 65 | 60 | 96 | 38 | 84 | 38 | 92 | 40 | 70 | 32 | 32 | 90 | 128 | 1238 |
| James R. Dean, dem. p. i. | 100 | 49 | 33 | 72 | 23 | 23 | 39 | 41 | 152 | 23 | 79 | 35 | 108 | 28 | 62 | 54 | 59 | 69 | 98 | 1141 |
| Willis D. Oldham, dem. p. i. | 98 | 48 | 29 | 63 | 24 | 21 | 27 | 35 | 140 | 23 | 67 | 34 | 93 | 32 | 50 | 47 | 55 | 61 | 94 | 1001 |
| William L. Stark, dem. p. i. | 67 | 41 | 26 | 68 | 22 | 21 | 30 | 31 | 142 | 15 | 71 | 33 | 95 | 29 | 47 | 50 | 48 | 54 | 81 | 971 |
| James B. Burleigh, soc. | 4 | 2 | 2 | 3 | 7 | 4 | 2 | 4 | 8 | 4 | 11 | 3 | 3 | 8 | 2 | 1 | 2 | 7 | 10 | 104 |
| James Campbell, soc. | 3 | 2 | 4 | 6 | 7 | 3 | 2 | 6 | 5 | 9 | 12 | 3 | 4 | 8 | 2 | 1 | 2 | 3 | 7 | 110 |
| Henry C. Bittenbender, pro | 13 | 1 | 2 | 1 | 3 | 1 | 5 | 1 | 6 | 1 | 2 | 1 | 1 | 3 | 4 | 1 | 2 | 3 | 7 | 69 |
| George I. Wright, pro | 11 | 3 | 2 | 4 | 1 | 6 | 1 | 12 | 1 | 4 | 1 | 1 | 1 | 7 | 3 | 1 | 2 | 3 | 7 | 82 |
| For Regents University of Nebraska | | | | | | | | | | | | | | | | | | | | |
| Frank L. Haller, rep. | 127 | 50 | 49 | 49 | 38 | 36 | 62 | 68 | 92 | 43 | 96 | 37 | 94 | 41 | 69 | 28 | 32 | 91 | 128 | 1240 |
| Victor G. Lyford, rep. | 126 | 48 | 44 | 46 | 39 | 32 | 56 | 65 | 85 | 45 | 89 | 36 | 70 | 27 | 30 | 80 | 80 | 134 | 119 | 238 |
| Charles T. Knapp, dem. p. i. | 69 | 41 | 27 | 75 | 25 | 20 | 31 | 30 | 154 | 17 | 67 | 38 | 94 | 29 | 47 | 50 | 58 | 55 | 84 | 1011 |
| J. E. Miller, dem. p. i. | 69 | 39 | 25 | 67 | 32 | 17 | 31 | 31 | 143 | 18 | 63 | 32 | 96 | 29 | 46 | 47 | 52 | 55 | 85 | 967 |
| Elbert I. Morrow, soc. | 4 | 3 | 4 | 4 | 5 | 5 | 1 | 7 | 4 | 12 | 1 | 4 | 4 | 7 | 2 | 3 | 30 | 10 | 112 | 112 |
| Geo. Clark Porter, soc. | 4 | 2 | 4 | 3 | 5 | 6 | 2 | 4 | 7 | 4 | 10 | 1 | 4 | 4 | 7 | 2 | 2 | 2 | 2 | 107 |
| Geo. C. Fitch, pro. | 11 | 2 | 4 | 4 | 2 | 5 | 4 | 6 | 3 | 3 | 1 | 15 | 3 | 3 | 2 | 6 | 7 | 3 | 8 | 74 |
| T. B. Frazer, pro. | 8 | 2 | 1 | 5 | 5 | 4 | 5 | 4 | 5 | 3 | 2 | 14 | 3 | 2 | 2 | 4 | 4 | 2 | 4 | 81 |
| For Railway Commissioner | | | | | | | | | | | | | | | | | | | | |
| Thomas L. Hall, rep. | 128 | 48 | 45 | 43 | 33 | 32 | 56 | 55 | 70 | 36 | 75 | 28 | 98 | 35 | 67 | 25 | 31 | 69 | 118 | 1102 |
| Clarence E. Harman, dem. p. i. | 77 | 46 | 40 | 85 | 41 | 26 | 41 | 40 | 188 | 31 | 94 | 51 | 103 | 43 | 65 | 58 | 63 | 92 | 134 | 1324 |
| Emry D. Moody, soc. | 7 | 2 | 2 | 3 | 3 | 3 | 4 | 1 | 11 | 6 | 15 | 6 | 3 | 6 | 7 | 1 | 3 | 3 | 12 | 124 |
| L. O. Jones, pro. | 13 | 1 | 2 | 2 | 2 | 2 | 2 | 2 | 6 | 2 | 3 | 2 | 3 | 2 | 3 | 2 | 5 | 5 | 8 | 73 |
| District Judge—Tenth Judicial District | | | | | | | | | | | | | | | | | | | | |
| Elmer U. Overman, rep. | 110 | 49 | 54 | 53 | 39 | 38 | 64 | 65 | 85 | 42 | 82 | 35 | 75 | 44 | 90 | 45 | 31 | 89 | 140 | 1320 |
| Harry S. Dungan, dem. p. i. | 124 | 44 | 33 | 80 | 42 | 23 | 45 | 49 | 192 | 28 | 97 | 42 | 147 | 39 | 44 | 37 | 67 | 92 | 131 | 1346 |
| C. J. Lindall, soc. | 4 | 1 | 2 | 2 | 3 | 4 | 2 | 4 | 5 | 9 | 1 | 2 | 2 | 8 | 1 | 1 | 2 | 1 | 2 | 76 |
| For County Judge | | | | | | | | | | | | | | | | | | | | |
| A. A. Greenman, rep. | 73 | 34 | 26 | 22 | 22 | 21 | 69 | 44 | 26 | 33 | 66 | 21 | 58 | 20 | 40 | 10 | 27 | 78 | 120 | 810 |
| A. D. Ranney, dem. | 31 | 18 | 31 | 62 | 16 | 18 | 8 | 39 | 254 | 18 | 47 | 29 | 121 | 18 | 30 | 6 | 41 | 58 | 69 | 904 |
| L. W. Edson, p. i. | 134 | 46 | 27 | 51 | 25 | 21 | 33 | 21 | 16 | 17 | 62 | 35 | 42 | 49 | 67 | 62 | 43 | 78 | 97 | 970 |
| Wm. J. Lippincott, soc. | 5 | 1 | 2 | 1 | 21 | 4 | 2 | 5 | 7 | 16 | 3 | 2 | 1 | 8 | 1 | 2 | 3 | 6 | 111 | 111 |
| For County Sheriff | | | | | | | | | | | | | | | | | | | | |
| O. D. Hedge, rep. | 188 | 50 | 55 | 74 | 26 | 42 | 46 | 55 | 140 | 33 | 70 | 42 | 134 | 38 | 68 | 35 | 50 | 124 | 170 | 1464 |
| James McBride, dem. p. i. | 56 | 41 | 32 | 68 | 48 | 18 | 63 | 50 | 145 | 35 | 86 | 40 | 44 | 25 | 56 | 46 | 44 | 78 | 108 | 1082 |
| L. O. Chapman, soc. | 6 | 4 | 3 | 11 | 6 | 5 | 1 | 7 | 8 | 34 | 6 | 5 | 6 | 19 | 2 | 4 | 38 | 23 | 188 | 188 |
| For Coroner | | | | | | | | | | | | | | | | | | | | |
| Ed Amack, rep. pro. | 190 | 64 | 49 | 36 | 61 | 42 | 87 | 83 | 46 | 58 | 132 | 57 | 103 | 63 | 106 | 47 | 33 | 132 | 163 | 1528 |
| Peter Merten, dem. | 43 | 39 | 37 | 92 | 13 | 18 | 18 | 39 | 235 | 10 | 37 | 26 | 108 | 10 | 24 | 25 | 54 | 40 | 82 | 957 |
| Geo. Fentress, soc. | 4 | 2 | 3 | 4 | 6 | 5 | 3 | 2 | 5 | 4 | 11 | 2 | 4 | 6 | 1 | 1 | 32 | 16 | 112 | 112 |
| For County Treasurer | | | | | | | | | | | | | | | | | | | | |
| R. W. Koonts, rep. | 168 | 54 | 37 | 56 | 24 | 37 | 56 | 41 | 62 | 39 | 92 | 43 | 102 | 62 | 96 | 38 | 26 | 125 | 182 | 1881 |
| Oscar A. Arnold, dem. p. i. | 69 | 42 | 30 | 69 | 43 | 26 | 48 | 58 | 228 | 28 | 78 | 42 | 110 | 22 | 40 | 45 | 64 | 54 | 78 | 1174 |
| Henry Rathjen, soc. | 5 | 1 | 5 | 6 | 6 | 3 | 7 | 4 | 7 | 8 | 20 | 8 | 4 | 3 | 6 | 1 | 27 | 11 | 127 | 127 |
| For County Clerk | | | | | | | | | | | | | | | | | | | | |
| E. W. Ross, rep. | 149 | 45 | 59 | 63 | 39 | 41 | 60 | 60 | 111 | 26 | 78 | 40 | 125 | 42 | 84 | 30 | 43 | 93 | 142 | 1338 |
| William R. Bailey, dem. p. i. | 91 | 50 | 28 | 68 | 43 | 22 | 49 | 44 | 160 | 46 | 97 | 46 | 91 | 45 | 49 | 58 | 55 | 91 | 111 | 1363 |
| Geo. B. Perry, soc. | 4 | 1 | 4 | 3 | 2 | 3 | 3 | 1 | 12 | 4 | 13 | 2 | 5 | 3 | 9 | 1 | 22 | 9 | 101 | 101 |
| For County Surveyor | | | | | | | | | | | | | | | | | | | | |
| Geo. H. Overing, rep. | 187 | 66 | 75 | 95 | 57 | 52 | 94 | 79 | 155 | 59 | 125 | 64 | 145 | 60 | 106 | 43 | 61 | 152 | 194 | 1859 |
| For County Superintendent | | | | | | | | | | | | | | | | | | | | |
| Stella Ducker, rep. | 124 | 40 | 42 | 49 | 42 | 35 | 60 | 52 | 98 | 41 | 69 | 27 | 101 | 30 | 73 | 32 | 32 | 126 | 158 | 1334 |
| Gertrude Coon, dem. p. i. | 113 | 57 | 49 | 85 | 36 | 25 | 51 | 50 | 186 | 30 | 109 | 55 | 113 | 52 | 59 | 52 | 68 | 57 | 100 | 1447 |
| Mayne Waskom, soc. | 5 | 2 | 1 | 5 | 5 | 1 | 5 | 1 | 6 | 4 | 12 | 3 | 3 | 8 | 9 | 1 | 21 | 12 | 94 | 94 |
| For Clerk District Court | | | | | | | | | | | | | | | | | | | | |
| Charles E. Reigle, rep. | 130 | 36 | 43 | 33 | 33 | 43 | 55 | 54 | 81 | 33 | 101 | 42 | 79 | 37 | 86 | 23 | 25 | 155 | 1217 | 1217 |
| Edith L. McKeighan, dem. p. i. | 107 | 63 | 47 | 94 | | | | | | | | | | | | | | | | |