

LEWIS' "SINGLE BINDER."

A hand-made cigar fresh from the table, wrapped in foil, thus keeping fresh until smoked. A fresh cigar made of good tobacco is the ideal smoke. The old, well cured tobaccos used are so rich in quality that many who formerly smoked 100 cigars now smoke Lewis' Single Binder Straight 50. Lewis' Single Binder costs the dealer some more than other 50 cigars, but the higher price enables this factory to use extra quality tobacco. There are many imitations; don't be fooled. There is no substitute! Tell the dealer you want a Lewis' "Single Binder."

A Way of Getting Even.
Hewitt—When I asked the old man for his daughter's hand he walked all over me.
Jewett—Can't you have him arrested for violation of the traffic regulations?

TO CURE A COLD IN ONE DAY
Take LAXATIVE BISMUTH Quinine Tablets. Frequent use relieves if it fails to cure. R. W. GILSON'S signature is on each box. 50c.

What sculpture is to a block of marble, education is to a human soul.—Addison



"THE STOMACH IS THE MEASURE OF YOUR HEALTH."
HOSTETTER.
If there is any weakness try the Bitters at once. Its results are certain.

Don't Persecute your Bowels

Cut out cathartics and purgatives. They are brutal—harsh—unnecessary. Try **CARTER'S LITTLE LIVER PILLS**. Purely vegetable. Act gently on the liver, stimulate bile, and soothe the delicate membrane of the bowels. Cure Constipation, Bile, Sick Headache and Indigestion, as millions know.

Small Pill, Small Dose, Small Price
Genuine must bear Signature

Beaumont

92% IN 6 MONTHS

Our clients who acted on our advice in the purchase of only three established dividend-paying stocks made 92% on their investment between August 3, 1910 and February 14, 1911, or at the rate of 184.2% annually.

CHARLES A. STONEHAM & CO.
COMMISSION BROKERS
66 Broad Street, New York City

PATENTS For invention made in patent. The W. T. Fitzgerald & Co., Washington, D. C.

Nebraska Directory

KODAK FINISHING
We don't charge you for developing your kodak films if you order one dozen prints or post cards. Send for our special price list. **Olson Photograph Co., Plattsmouth, Neb.**

RUPTURE CURED in a few days without pain or a surgical operation. No pay until cured. Send for literature. **Dr. Wray, 307 Bee Bldg., Omaha, Neb.**

TYPEWRITERS ALL MAKES sold and rented everywhere. Write for bargain list. **H. F. SWANSON COMPANY, Inc.** 145 S. 13th St., Lincoln, Neb.

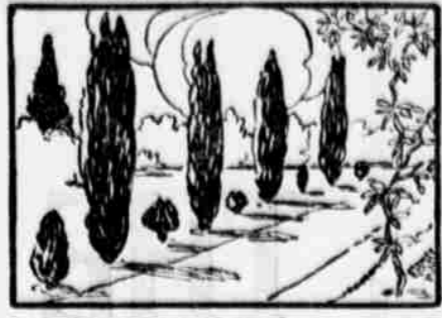
Beatrice Creamery Co.
Pay the highest price for

CREAM

Lincoln Sanitarium

Sulpho Saline Springs
Located on our own premises and used in the **Natural Mineral Water Baths**
Unsurpassed in the treatment of **Rheumatism**
Heart, Stomach, Kidney and Liver Diseases
MODERATE CHARGES. ADDRESS
DR. O. W. EVERETT, Mgr. 1405 N. Street, Lincoln, Neb.

HORTICULTURE



SHOWY AND HARDY PERENNIAL

Anthemis Kelwayi Blooms Freely, Flowers Being Daisy-Like and of Rich Golden Color.

A snowy and beautiful hardy perennial blooming the first season, and during the summer months for many



Anthemis Kelwayi.

years afterward. In *Anthemis tinctoria* Kelwayi. The plants are easily started from seeds, grow a foot high and bloom freely, the flowers being daisy-like, two inches across, and of a rich, golden color. A big plant of this elegant flower was in bloom at one of the seed gardens at Erfurt, Germany, when the editor was there, and it was a sheet of gold, gorgeous beyond description.

This flower likes a sunny exposure and rich, porous soil. The seedlings may be raised in a window-box, hot-bed or garden bed, and transplanted when large enough, setting the plants eight inches apart each way. They will thus cover the ground, and become a glorious mass of flowers. Even the foliage is beautiful, being of graceful form, elegantly cut or fringed, says Park's Floral Magazine. The engraving represents a plant in full bloom, and will afford a good idea of its foliage and flowers. The seeds may be obtained of most any reputable dealer at 5 cents per packet. It is always greatly admired by those who are fond of golden flowers.

FRUIT PICKER IS PRACTICAL

Prevents Bruising When Picked by Flexible Holder—Illustration Shows Operation.

To prevent fruit from being bruised when picked, a fruit picker with flexible holder has been invented, in which provision is made for varying the capacity of the holder to obviate the necessity of dropping the fruit to any distance, says the Scientific



Fruit Picker With Expansible Holder.

American. As shown in the illustration, the fruit picker comprises a pair of jaws, shown open, in full lines, but which may be drawn to a closed position, shown in dotted lines, by operating a lever connected to one of the jaws by means of a wire. A bag mounted on the jaws passes through a slotted yoke, which limits its capacity. By sliding a sleeve upward, the jaws are raised, drawing the bag out of the yoke, and increasing its capacity.

Hill Strawberries. Experiments made at the Pennsylvania experiment station show that all hill strawberries are not larger and better formed than those grown in matted rows, provided the matted row is a narrow one. Both hills and matted rows produced fruit somewhat inferior to that from narrow matted rows. It is evident that different soil conditions and cultural methods, especially in the matter of manuring, would change these results somewhat more favorably to the hill system.

GROWING OF SUMMER APPLES

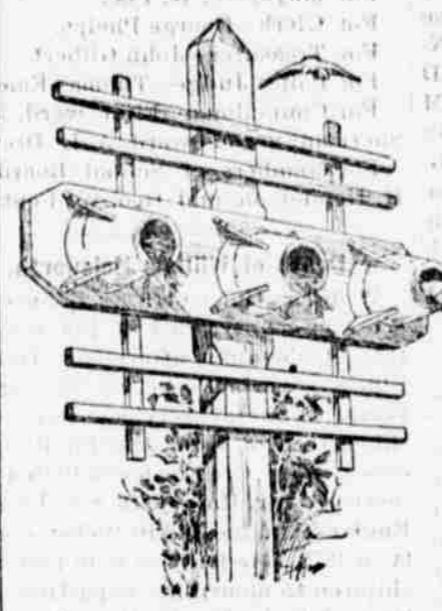
Department of Agriculture Makes Study of Industry in Middle Atlantic States.

On nearly every farm summer apples have had a place since very early days, and varieties have been developed extending the season of apple production over the entire summer, as well as autumn. While as a rule this fruit has been grown for family consumption, the surplus has found its way to market. The marked decline in the production of peaches within the past few years has brought about a considerable extension of the early apple industry on a commercial scale, which extension has been most marked in the middle Atlantic states, where especially advantageous transportation routes, both rail and water, and the proximity of large markets have stimulated the enterprise, which has its center in the truck-producing region near Philadelphia. The United States Department of Agriculture, as a result of this extension, has made a study of the early apple industry, with the middle Atlantic states as a field, and published the information collected in a bulletin entitled "Summer Apples in the Middle Atlantic States," issued by the bureau of plant industry. This bulletin is a compendium of information covering all phases of the question of early apple production, including soils, climate, culture, picking, packing, marketing, etc. Numerous varieties are described, and seasons and other data conveniently presented in tabular form.

MAKING NOVEL BIRD HOUSES

Common Garden Flower Pot May Be Used by Enlarging Opening at the Bottom.

A novel use of the common garden flower pot may be made by enlarging the small opening at the bottom with a pair of pliers, and carefully breaking



Pot Fastened to the Board.

the clay away until the opening is large enough to admit a small bird. Place the pot bottom side up on a board that is three inches wider than the diameter of the largest pot used and fasten it to the board with wood cleats and brass screws. Fit the cleats to the sides of the pot as close as possible, writes William F. Stecker of Massachusetts in the Popular Mechanics. One or more pots may be used, as shown in the sketch.

The board on which the pots are fastened is nailed or screwed to a post or pole 10 or 12 feet in height. The board is braced with lath or similar strips of wood, making a framework suitable for a roost. In designing the roost, the lath can be arranged to make it quite attractive, or the braces may be twigs and branches of a tree to make a rustic effect.

HORTICULTURAL NOTES

Debarking makes old trees become as new.

A strawberry plant is naturally an evergreen.

Not everyone who farms has a good family orchard.

Intelligent pruning is also very necessary to raising fruit.

The first warm days of spring give gardeners an inspiration for flowers.

In general, the best results are obtained from spraying applications made in cloudy weather.

Spraying is at least half of fruit-growing as well as a good part of gardening and truck farming.

Pruning the farm orchard is a knotty problem to the beginner; in fact the older heads are bothered.

The time to spray the trees from all sides and cover every portion from the ground to the ends of the branches.

For burrows make ground rich by liberal use of barnyard manure and commercial fertilizer, having plenty of potash.

As to the spraying of the farm orchard, there is no question but what it will pay and the more thorough you are, the better the results.

The oozing out of the sap from cherry and peach trees, forming drops or lumps of gum, arises from a diseased condition of the trees.

Hurry up the grafting, if not done last month. A paste of cow manure and clay, bound on to a partially-girdled tree trunk, will often save the tree.

DEFEAT THROUGH DRUNKENNESS

Sunday School Lesson for Mar. 19, 1911
Specially Arranged for This Paper

LESSON TEXT—11 Kings 4:37. Memory verse 13.
GOLDEN TEXT—"It is not for kings to drink wine, nor for princes strong drink."—Prov. 31:4.

TIME: This lesson belongs between Lessons VIII and IX, during the latter part of Elijah's mission.

PLACE: The Syrian kingdom, with its capital at Damascus, adjoined Israel on the north. At this period, not long before the revived Assyrian power and aggression came in contact with Israel, Syria under Benhadad II was the most powerful nation on the Mediterranean coast. It was normally a bitter enemy of northern Israel. It was always a group of related, but not united, petty kingdoms or tribes.

Benhadad, the Syrian king, gathered together the 32 kings of the smaller tribes allied to his kingdom and made an overpowering raid upon Israel, destroying villages and farms and orchards, paralyzing business, ravaging the homes and driving the people to the more strongly fortified towns. They were like "a tempest of hail, a destroying storm, a flood of mighty waters overflowing, an overwhelming scourge." These epithets describe in vivid speech the irresistible violence, the devastating force with which the Syrians were about to overwhelm them. It is almost impossible for us to realize the devastating power of such half-savage hordes who lived upon the country, who ravaged villages, who murdered women and children, who had an unrestrained power. They were worse than the ten plagues of Egypt.

What the invaders sought was the wealth, the harvests and all kinds of valuables, without paying for them, and entirely without regard to the welfare of the people. Into our godly country Intemperance, from drinking alcoholic liquors, has come and is doing our country more damage, to its people, to its wealth and prosperity, than the Syrians did to Palestine, the Promised Land, by their invasion. King Alcohol comes with an army of tributaries and allies, such as the 240,000 saloons, the distilleries, breweries, hotels, clubs, personal invitations to drink, advertisements in magazines and papers, cocaine and opium habits. All invading us for the sake of their own personal gain at the expense of the community.

When the invaders had reached the capital with their army and horses and chariots in an unresisted march, Benhadad sent messengers to Ahab demanding that he yield up his throne, which is implied in his imperious conceit of power; Thy silver and thy gold is mine; thy wives also and thy children, even the goodliest, are mine. And Ahab was so overwhelmed at the power backing the demand that he basely yielded and replied: My lord, O king, according to thy saying, I am thine, and all that I have. Such are the demands of King Alcohol!

The cost of liquors each year in this country is nearly \$1,400,000,000. The drink bill in England in 1908 was over \$800,000,000. Take the national liquor bill and divide it by the number of saloons and \$5,945 becomes the average cost to the people of each saloon. On the average the saloon pays back for nation, state and city taxes \$500. This \$500 is eagerly taken from a grateful country in lieu of \$5,945. Thus King Alcohol demands our homes, our wives, our husbands, our silver and gold. And we have yielded too easily to its demands.

Benhadad then sent word that his officers were coming and would search Ahab's house for every pleasant thing he had and would take it away. And not only Ahab's house, but the houses of his officers and leaders. This caused a revolt. The king summoned his leading people to a conference and they decided not to yield to the demands of Benhadad. The weak Ahab declared that for himself he would yield all he had promised, but he must deny the increased demand.

King Alcohol became so greedy in his demands, the results of his evil work became so great that the people were aroused in indignation against him. At first it was agreed to allow wine and beer and moderate drinking, but to resist the ravages of the more fiery drinks. But this was a failure. Temperance societies were formed. Local and state prohibition were inaugurated. Investigations were made. Pledges taken.

In their great distress a prophet came to King Ahab with a message from Jehovah: Hast thou seen all this great multitude? I will deliver it into thine hand this day. Why? And thou shalt know I am the Lord. The victory was wrought to bring them back to the true God, to obedience and worship; which was vastly more important to their true welfare than the loss of all their property, could have been.

And Ahab said, By whom? And he said, Thus saith the Lord, by the young men of the princes of the provinces. Who shall order the battle? And he answered, thou—the king, the head of the nation. He numbered, mustered, 232 of the young princes.

God, the true religion, is the one source of victory over the power of intemperance. Religious motives and inspiration, love of God and love to man, the spirit of service, loyalty to the coming of the kingdom of God—these are the sources of salvation from the curse of strong drink. The leader, Jesus Christ the ever-living, the transforming power of the Holy Spirit, the Great Cause and aim of the Christian, the transformation of this world into the kingdom of God—these are and always have been the source of victory over all the principalities and powers of evil.

LADIES CAN WEAR SHOES one size smaller after using Allen's Foot Ease. The antiseptic powder to be shaken into the shoes. It makes tight or new shoes feel easy. It's new discovery. For Free trial package, address Allen S. Gimsted, Le Roy, N. Y.

Intends to Be Boss.
Maud—Do you intend to marry or to retain your liberty?
Ethel—Both.

For constipation, biliousness, liver disturbances and diseases resulting from impure blood, take Garfield Tea.

People seldom improve when they have no model but themselves to copy after.—Goldsmith.

Rebelle.
Mrs. Richquick—John, I want you to buy a new parlor suit.
Mr. Richquick—Maria, I've been agreeable enough so far to get different clothes for morning, noon, afternoon and night, but I'm concerned if I'll change 'em every time I go into a different room."

EASTER POST CARDS FREE.
Send 25 stamp for five samples of our very best Gold Embossed, Easter, Flower and Motto Post Cards; beautiful colors and loveliest designs. Art Post Card Club, 731 Jackson St., Topeka, Kan.

The entire object of true education is to make people not merely do the right thing, but enjoy the right thing.—Ruskin.

PILES CURED IN 30 DAYS
Four strongest will relieve money if PAIN DISTEMPER fails to cure any case of Internal, Piles, Hemorrhoids or Protruding Hemorrhoids.

Modesty is to us as a shield to figures in a picture; giving it strength and beauty.—Bruyere.

Give a girl a present, and she will not worry about the future.

Garfield Tea has brought good health to thousands! Unequaled for constipation.

It is more disgraceful to distrust than to be deceived.—Roucheffoucauld.

Remedies are Needed
Were we perfect, which we are not, medicines would not often be needed. But since our systems have become weakened, impaired and broken down through indiscretions which have gone on from the early ages, through countless generations, remedies are needed to aid Nature in correcting our inherited and otherwise acquired weaknesses. To reach the seat of stomach weakness and consequent digestive troubles, there is nothing so good as Dr. Pierce's Golden Medical Discovery, a glycytic compound, extracted from native medicinal roots—sold for over forty years with great satisfaction to all users. For Weak Stomach, Biliousness, Liver Complaint, Pain in the Stomach after eating, Heartburn, Bad Breath, Belching of food, Chronic Diarrhea and other Intestinal Derangements, the "Discovery" is a time-proven and most efficient remedy.

The genuine has on its outside wrapper the Signature

You can't afford to accept a secret nostrum as a substitute for this non-alcoholic, medicine of known composition, not even though the urgent dealer may thereby make a little bigger profit.

Dr. Pierce's Pleasant Pellets regulate and invigorate stomach, liver and bowels. Sugar-coated, tiny granules, easy to take as candy.

Hood's Sarsaparilla
Will purify your blood, clear your complexion, restore your appetite, relieve your tired feeling, build you up. Be sure to take it this spring.

CASTORIA
For Infants and Children.
The Kind You Have Always Bought
Bears the Signature of *Dr. J. C. Hutchins*
In Use For Over Thirty Years
CASTORIA

44 Bu. to the Acre
In a heavy yield, but that's what John Kennedy got from 44 acres of Spring Wheat in 1910. He reports from other crops that his power-plant showed other excellent results—such as 4-1/2 bushels of corn, 20 bushels of wheat, 120 bushels of oats, 35-1/2 bushels of rye, 25 bushels of clover, 45 bushels of timothy, were produced. As high as 120 bushels of oats to the acre were threshed from an Alberta variety of wheat.

Free home-studies of 100 acres and adjoining possessions of 160 acres (at \$50 per acre) are had in the closest districts. Schools convenient, climate excellent, soil the very best, railways close at hand. For more information, send for our circulars, free of charge, and our descriptive literature. Last harvest we had 1000 bushels of wheat, 1000 bushels of oats, 1000 bushels of rye, 1000 bushels of clover, 1000 bushels of timothy, 1000 bushels of alfalfa, 1000 bushels of hay, 1000 bushels of straw, 1000 bushels of grain, 1000 bushels of stock, 1000 bushels of fruit, 1000 bushels of vegetables, 1000 bushels of other crops.

W. BENNETT
See Building at Omaha, Neb. (Use address nearest you.)

5 Fine POST CARDS FREE
Send only 25 stamp and receive 5 very finest Gold Embossed Easter Post Cards. FREE. To introduce our card offer. Capital Card Co., Dept. 10, Topeka, Kan.

W. L. DOUGLAS
ESTAB. 1876 \$2.50 \$3 \$3.50 & \$4 SHOES FOR MEN & WOMEN
W. L. Douglas shoes cost more to make than ordinary shoes, because higher grade leathers are used and selected with greater care. These are the reasons why W. L. Douglas shoes are guaranteed to hold their shape, look and fit better and wear longer than any other shoes you can buy.

BEWARE OF SUBSTITUTES.
The genuine have W. L. Douglas name and the retail price stamped on the bottom, which guarantees full value and protects the wearer against high prices and inferior shoes. REFUSE SUBSTITUTES CLAIMED TO BE "JUST AS GOOD".

If your dealer cannot supply you with the genuine W. L. Douglas shoes, write for Mail Order Catalog. Shows and direct from factory. It weighs all shoes paid. W. L. Douglas, 145 Spark St., Brockton, Mass. \$2.00, \$2.50, \$3.00, \$3.50, \$4.00

W. L. DOUGLAS
ESTAB. 1876 \$2.50 \$3 \$3.50 & \$4 SHOES FOR MEN & WOMEN
W. L. Douglas shoes cost more to make than ordinary shoes, because higher grade leathers are used and selected with greater care. These are the reasons why W. L. Douglas shoes are guaranteed to hold their shape, look and fit better and wear longer than any other shoes you can buy.

BEWARE OF SUBSTITUTES.
The genuine have W. L. Douglas name and the retail price stamped on the bottom, which guarantees full value and protects the wearer against high prices and inferior shoes. REFUSE SUBSTITUTES CLAIMED TO BE "JUST AS GOOD".

If your dealer cannot supply you with the genuine W. L. Douglas shoes, write for Mail Order Catalog. Shows and direct from factory. It weighs all shoes paid. W. L. Douglas, 145 Spark St., Brockton, Mass. \$2.00, \$2.50, \$3.00, \$3.50, \$4.00

W. L. DOUGLAS
ESTAB. 1876 \$2.50 \$3 \$3.50 & \$4 SHOES FOR MEN & WOMEN
W. L. Douglas shoes cost more to make than ordinary shoes, because higher grade leathers are used and selected with greater care. These are the reasons why W. L. Douglas shoes are guaranteed to hold their shape, look and fit better and wear longer than any other shoes you can buy.

BEWARE OF SUBSTITUTES.
The genuine have W. L. Douglas name and the retail price stamped on the bottom, which guarantees full value and protects the wearer against high prices and inferior shoes. REFUSE SUBSTITUTES CLAIMED TO BE "JUST AS GOOD".

If your dealer cannot supply you with the genuine W. L. Douglas shoes, write for Mail Order Catalog. Shows and direct from factory. It weighs all shoes paid. W. L. Douglas, 145 Spark St., Brockton, Mass. \$2.00, \$2.50, \$3.00, \$3.50, \$4.00

W. L. DOUGLAS
ESTAB. 1876 \$2.50 \$3 \$3.50 & \$4 SHOES FOR MEN & WOMEN
W. L. Douglas shoes cost more to make than ordinary shoes, because higher grade leathers are used and selected with greater care. These are the reasons why W. L. Douglas shoes are guaranteed to hold their shape, look and fit better and wear longer than any other shoes you can buy.

BEWARE OF SUBSTITUTES.
The genuine have W. L. Douglas name and the retail price stamped on the bottom, which guarantees full value and protects the wearer against high prices and inferior shoes. REFUSE SUBSTITUTES CLAIMED TO BE "JUST AS GOOD".

If your dealer cannot supply you with the genuine W. L. Douglas shoes, write for Mail Order Catalog. Shows and direct from factory. It weighs all shoes paid. W. L. Douglas, 145 Spark St., Brockton, Mass. \$2.00, \$2.50, \$3.00, \$3.50, \$4.00

W. L. DOUGLAS
ESTAB. 1876 \$2.50 \$3 \$3.50 & \$4 SHOES FOR MEN & WOMEN
W. L. Douglas shoes cost more to make than ordinary shoes, because higher grade leathers are used and selected with greater care. These are the reasons why W. L. Douglas shoes are guaranteed to hold their shape, look and fit better and wear longer than any other shoes you can buy.

BEWARE OF SUBSTITUTES.
The genuine have W. L. Douglas name and the retail price stamped on the bottom, which guarantees full value and protects the wearer against high prices and inferior shoes. REFUSE SUBSTITUTES CLAIMED TO BE "JUST AS GOOD".

If your dealer cannot supply you with the genuine W. L. Douglas shoes, write for Mail Order Catalog. Shows and direct from factory. It weighs all shoes paid. W. L. Douglas, 145 Spark St., Brockton, Mass. \$2.00, \$2.50, \$3.00, \$3.50, \$4.00