



A Newspaper That Gives The News Fifty-two Weeks Each Year For \$1.50.

VOLUME XXXVIII.

RED CLOUD, NEBRASKA, DECEMBER 15, 1910.

NUMBER 50

# Christmas Suggestions

Our Stock is particularly good and full of suitable gift ideas with such a range of articles and prices that something can easily be selected as a suitable gift for anyone. We list below just a few of the many articles appropriate at this time.



## Watches

Our line is extra good and the qualities the best. As to prices---compare them with anyone. All watches thoroughly warranted as to grade and reliability.

A most acceptable gift for one not already is a watch. These we have in all grades and at a range of prices from 75c to \$85.00. Representing all standard makes.

Howard Watches in gold filled cases at \$37.50.  
 Elgin and Waltham watches in Nickel cases at \$5.00 and up.  
 Elgin and Waltham " in Gold filled cases \$7.00 and up.  
 Ingersolls at \$1.00. Ingersoll-Trentons 5.00 to 12.00.  
 And a first class line of Hamiltons for both men and women. We have a few BARGAIN watches, regular quality and fully guaranteed. Just a few we happened to pick up at less than regular prices.

## Wrings

Our line of rings also affords choice of a gift suitable for any one. The stocks includes a line of plain engraved and signet rings in sizes for the largest and the smallest hands. The stone set rings embraces hundreds of choice designs in both real and imitation jewels.

Baby rings 50c, 75c, \$1.00, 1.25 up. Misses rings \$1.00, 1.25, 1.50 and up.  
 Ladies rings \$2.00, 2.25, 2.50 up. Mens rings \$3.50 and up.  
 Every ring is solid gold and must always be the same.



The line of Fobs, Chains, and Watch Pins is the best we have ever shown and includes all prices and only the best at the price.

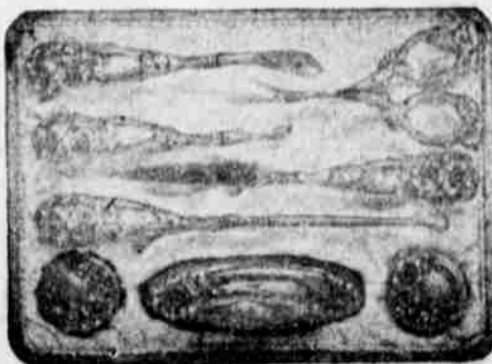
Our assortment of Cuff buttons and Links is very good and range in price from 50c up showing a complete line for both Ladies and Mens use in Rolled Plate, Filled and Solid Gold. Many of them are stone set, Garnets, Amethyst, Turquoise and Diamond.



An extra good gift is a Hull Detachable Handle Umbrella. A most useful and acceptable gift and at a price you can afford. The stock includes everything from the \$1.00 complete Umbrella to Umbrellas costing \$20.00. The 21 different covers from \$1 to \$5 and Handles from 15c to \$15.00 permitting you to make a gift to suit the recipient and at a price to suit your purse. Covers and Handles fully warranted.



As an all year round pleasure gift for all the family nothing equals a Phonograph. We have here as usual only the best made the Edison playing the cylinder records and the Victor using the disc records. One of these makes a gift to please every member of the family and furnishes entertainment every day in the year. Machines \$12.50 to \$200.00. Records 35c to \$7.00.



The silverware line is too extensive to attempt an enumeration including as it does a full assortment of everything in Aurora and Gorham plate and a full selection of Gorham Sterling flat ware.

Our goods are quality goods and only the best manufacturers obtain a representation in our stock otherwise we could not make our unqualified offer "Satisfaction or Money Back."

Call in look over the stock everything marked in plain figures and always glad to show you.

## EDISON



1. All work (with one exception) must have been executed this school year.
2. All work must be done in ink for all grades above the fourth, except work in drawing.
3. All papers to be written on one side only, and all work must be mounted on cardboard.
4. Each cardboard must be clearly marked and contain but one class of work.
5. Mark cardboard clearly with name of pupil competing and for which prize it is to be entered.
6. All work must be delivered on the 21st day of January to Miss Irene Miner at Institute Hall, Red Cloud. Work delivered later than Jan 24 cannot be entered for a premium.

### Independent Exhibits - Premium list:

1. Best original composition with the following subject: "Why is Webster county a good place in which to live?" by any seventh or eighth grade pupil, first premium \$1, second \$1.
2. Best illustrated story or poem by any third or fourth grade pupil, first premium \$1, second premium \$1.
3. Best exhibit of water color or colored crayon work by any third or fourth grade pupil, first premium \$1, second premium \$1.
4. Same by any fifth or sixth grade pupil, first premium \$1, second \$1.
5. Same by any seventh or eighth grade pupil, first \$1, second \$1.
6. Best handwork, either single piece or display, by any first or second grade pupil, first \$1, second \$1.
7. Best map of Webster county, first premium \$1, second \$1.
8. Best relief map of Nebraska, first premium \$2, second \$2.
9. Best original plan or model of an ideal farm (quarter section), showing products and location of buildings, first premium \$2, second \$2.
10. Best four physiology drawings, first premium \$1, second \$1.
11. Best display of manual training work, any year's work, first premium \$2, second \$2.
12. Best specimen of penmanship by

## HEADQUARTERS

It pays to trade at Headquarters. The oftener you buy the oftener you will find it out. Our Holliday goods are on the way and will soon be opened up for inspection. We absolutely know we can save you money.

**The Model Variety Store**

### Woman's Department

Farmer's Institute January 24, 25, 26

Batter, first, second and third premiums.  
 Cake, first and second premiums.  
 Bread, first and second premiums.  
 Best display of baking—First and second premiums.

Needlework—Best piece of French, eyelet, or Mount Meleek embroidery. Hardanger, drawnwork, colored embroidery, Battenberg or other braid lace, tatting, knitting, crocheting.

Best display of fancy needlework, first and second premiums.  
 Best patchwork quilt.

Best piece of needlework or other hand work by lady over 60 years old.  
 Best display of darning, on any material.

Girls Department—Girls competing must be under 16 years of age.

Cake, first and second premiums.  
 Bread, first and second premiums.  
 Best display of baking, first and second premiums.

Needlework—Best darning of hose, first premium by Mrs. Max Mizer, silver thimble; second premium by Mrs. Max Mizer, silver mounted darning.

Best piece of needlework or other handwork, first and second premiums.  
 Drawing, best original free hand sketch, first by Miss Potter.

Educational Department—General directions:

1. All work (with one exception) must have been executed this school year.

2. All work must be done in ink for all grades above the fourth, except work in drawing.

3. All papers to be written on one side only, and all work must be mounted on cardboard.

4. Each cardboard must be clearly marked and contain but one class of work.

5. Mark cardboard clearly with name of pupil competing and for which prize it is to be entered.

6. All work must be delivered on the 21st day of January to Miss Irene Miner at Institute Hall, Red Cloud. Work delivered later than Jan 24 cannot be entered for a premium.

Independent Exhibits - Premium list:

1. Best original composition with the following subject: "Why is Webster county a good place in which to live?" by any seventh or eighth grade pupil, first premium \$1, second \$1.
2. Best illustrated story or poem by any third or fourth grade pupil, first premium \$1, second premium \$1.
3. Best exhibit of water color or colored crayon work by any third or fourth grade pupil, first premium \$1, second premium \$1.
4. Same by any fifth or sixth grade pupil, first premium \$1, second \$1.
5. Same by any seventh or eighth grade pupil, first \$1, second \$1.
6. Best handwork, either single piece or display, by any first or second grade pupil, first \$1, second \$1.
7. Best map of Webster county, first premium \$1, second \$1.
8. Best relief map of Nebraska, first premium \$2, second \$2.
9. Best original plan or model of an ideal farm (quarter section), showing products and location of buildings, first premium \$2, second \$2.
10. Best four physiology drawings, first premium \$1, second \$1.
11. Best display of manual training work, any year's work, first premium \$2, second \$2.
12. Best specimen of penmanship by

any pupil in primary grades, first premium \$1, second \$1

12. Same by any pupil in intermediate grades, first premium \$1, second \$1.

11. Same by any pupil in grammar grades, first premium \$1, second \$1.

### Show in Omaha Held at the Right Time

Nebraska lost the National Corn Exposition because the officers of the National Corn Association insisted on holding it in Omaha just before the holidays. This met with so much objection on the part of business men and newspapers that the Omaha business interests let the show go. The objection was that the corn show drew people into the city at a time when they would do most of their holiday trading in Omaha instead of at home.

But for two years the corn show was an inspiration to the farmers of Nebraska and Iowa. No one doubts its good influence and that it increased interest in farm crops to such an extent that we have larger yields from our lands.

Since the National Corn Exposition left Omaha, there has been such an insistent demand for a mid-winter farm crop exposition where the work of western states could be gathered under one roof and compared, that enterprising Omahans have planned and arranged to hold the "Western Land Products exhibit" in the auditorium of that city from January 18 to 28. It is to be held in the same building where the corn show was held and will take its place in every way, except that only western states can enter their products and it thus becomes a greater exposition for the west than the now famous National Corn exposition.

The dates selected should be more satisfactory and the attendance larger than at the corn show, and by the exhibits made from Nebraska and Iowa, people of the two states should be convinced when comparing soil products, that these two states offer just as good advantages for more profitable agriculture as the newer states in the west which are making every effort to get settlers from Iowa and Nebraska.



**ROYAL BAKING POWDER**

Absolutely Pure  
 The only baking powder made from Royal Grape Cream of Tartar  
 No Alum, No Lime Phosphate

# NEWHOUSE BROTHERS,

E. H. NEWHOUSE, Prop.

Jewelers and Optometrists.