

EGZEMA'S ITCH IS TORTURE.

Eczema is caused by an acid humor in the blood coming in contact with the skin and producing great redness and inflammation; little pustular eruptions form and discharge a thin, sticky fluid, which dries and scales off; sometimes the skin is hard, dry and fissured. Eczema in any form is a tormenting, stubborn disease, and the itching and burning at times are almost unbearable; the acid burning humor seems to ooze out and set the skin on fire. Salves, washes nor other external applications do any real good, for as long as the poison remains in the blood it will keep the skin irritated.

SAD FORM OF TETTER.

"For three years I had Tetter on my hands, which caused them to swell to twice their natural size. Part of the time the disease was in the form of running sores, very painful, and causing me much discomfort. Four doctors said the Tetter had progressed too far to be cured, and they could do nothing for me. I took only three bottles of S. S. S. and was completely cured. This was fifteen years ago, and I have never since seen any sign of my old trouble."—Mrs. L. E. JACKSON, 1214 McGee St., Kansas City, Mo.



S. S. S. neutralizes this acid poison, cools the blood and restores it to a healthy, natural state, and the rough, unhealthy skin becomes soft, smooth and clear. It cures Tetter, Erysipelas, Psoriasis, Salt Rheum and all skin diseases due to a poisoned condition of the blood. Send for our book and write us about your case. Our physicians have made these diseases a life study, and can help you by their advice; we make no charge for this service. All correspondence is conducted in strictest confidence.

THE SOUTHERN MEDICAL CO., ATLANTA, GA.

THE CHIEF

PUBLISHED BY
W. L. McMILLAN.
One year \$1.00
Six months .50
Published every Friday

Entered at the post office at Red Cloud, Neb., as second class mail matter.
ADVERTISING RATES:
Local advertising 5 cents per line per issue.
Local advertising for entertainments, concerts, socials, etc., given by churches, charitable societies, etc., where all moneys raised therefrom are used wholly for church or charitable societies first ten lines free and all over ten lines 3/4 cents per line per issue.
Local advertising of entertainments, concerts, recitals, etc., where per cent is given to promoters, 5 cents per line per issue.
DISPLAY ADVERTISING:
One column per month \$7.00
One-half column per month 3.50
One-fourth column per month 1.75
General display advertising 8 1/2 cents per inch per line.

Republican State Ticket.
For Supreme Judge,
SAMUEL H. SEDGWICK,
Of York County.
For Regents to State University,
C. J. ERNST,
Of Lancaster County,
H. L. GOOLD,
Of Keith County.

Republican County Ticket.
For County Judge,
G. H. CHANNEY,
Of Red Cloud, 3d Ward.
For County Sheriff,
O. D. HEDGE,
Of Red Cloud Precinct.
For County Coroner,
DR. T. R. HALL,
Of Pleasant Hill Precinct.
For County Treasurer,
CHAS. F. CATHER,
Of Red Cloud, 1st Ward.
For County Clerk,
ED. S. GARBER,
Of Guide Rock Precinct.
For County Surveyor,
W. E. THORNE,
Of Glenwood Precinct.
For County Superintendent,
MRS. E. J. CASE,
Of Red Cloud, 3d Ward.
For Commissioner 1st Dist.,
K. BEITLER,
For Commissioner 3d Dist.,
W. F. KENKEL,
For Commissioner 5th Dist.,
W. RICHARDS.

Be sure that you vote.
Vote the above ticket straight. Don't be a splitter.

An X in the first ring on the official ballot is all the ring a republican needs to make this year.

You can't find a man in the first district who would make a better commissioner than E. Beitler.

Republican supremacy depends upon united action and that is what we want in Webster county this fall.

This may be called an off year but we are willing to bet a year's subscription against a bushel of potatoes that Webster county goes republican.

Don't get an idea in your head that this is an off year and that it don't make any difference whether you vote or not. Nothing causes defeat but such ideas and no one should entertain them.

Last Friday another change was made in the management of the Red Cloud Nation, W. W. Ward, the former proprietor having sold his interest to Messrs. J. P. Hale and J. H. Walsh, who will be the dispensers of populism and fusion in Webster county in the future.

Remember that two republican stay-at-home votes in every voting precinct

means that the populists will again carry Webster county. Do you want this to happen? You certainly do not. Make it a point that you are not one of them and also appoint yourself a committee of one to see that your neighbor is not one of them. Get out every republican vote in your precinct. That is what is wanted this year.

The office of coroner is usually looked upon as a joke in a peaceable and law-abiding community such as we have in Webster county; still, should a coroner's services be needed it will be fortunate indeed if we should have a competent man to handle the case. Just such a man would be Dr. T. R. Hall. He is a polished gentleman and good physician, just the kind of a man for coroner.

The republicans of this county have no excuses and only one promise to make providing the voters of the first, third and fifth districts elect the republican commissioners. That promise is the county's interests will be looked after from a business point of view instead of a political point of view. We believe the voters of these districts already realize this fact and that business and not politics is what is wanted out of a board of county commissioners just at present.

O. D. Hedge—you all know Oliver Hedge. And what is more you don't know anything against him and you cannot help feeling that he is the right man for sheriff. He has lots of hustle; he does no unnecessary talking; he pays strict attention to business and he has a habit of getting what he goes after, which is one of the most important things in the sheriff's office. Here is a good chance for you to get a good officer and one who will be a credit to the whole county.

The people of Webster county have had a most excellent man for treasurer during the past four years in the person of Mr. Chas. D. Robinson, who is acknowledged by all to be the best treasurer Webster county ever had and they can rest assured that they will continue to have such a one if they choose Chas. F. Cather for the place. He is known to be strictly reliable, thoroughly business-like in his methods and abundantly responsible. He has no debts and therefore will have no temptation to use the county money. The voters of this county will make no mistake if they choose Mr. Cather to attend to the affairs of the county treasurers office for the next two years.

How Are Your Kidneys?
Dr. Hobbs' Seargent Pills cure all kidney ailments. Free. Add: Sterling Remedy Co., Chicago, Ill.

Be a Good Republican.

One year ago a majority of the voters of Webster County cast their ballots for Wm. McKinley and Theodore Roosevelt for President and Vice-president of the United States, and by their loyalty and devotion to republican principles and republican candidates succeeded in electing the entire republican state ticket—thus wresting the state from the control of the fusionists—placing Nebraska once more in the republican column.

If you believed you were right when you voted the republican ticket last year, that belief now must amount to a conviction for all of the promises of the republican party have been redeemed, and the credit of our country was never higher. Its grandeur and glory are today the pride of every liberty loving American citizen.

You are again called upon to take your choice between the candidates of the republican party who stand for all that is grandest and best in our government, and the candidates of the forces of populism, socialism and anarchy who are now and always have been a menace to the peace and prosperity of our nation.

Now is the time to kill populism. If republicans will vote the republican ticket there will be no populist office holders in Webster County. No one around whom the pops can rally. If a single populist be elected their organization will be maintained, and we will have to fight the same fight over and over again, but if every republican will do his duty on election day there will be no pops to fight in the years to come. Therefore it is the duty of every republican to lay aside any feeling or prejudice which he may have against any of the republican candidates, and cast his ballot for the straight republican ticket. Let this be done and populism will have received its death blow. We ask you as a republican to aid in perpetuating the fame and name of our late lamented leader, President McKinley. You can do this by voting the straight ticket of the grand old republican party. The party for whose principles President McKinley spent the best years of a gloriously patriotic life. In no way can we more emphatically show our devotion to him or prove our loyalty to a government of law and order than by voting the straight ticket of the party he so ably and earnestly supported.

Make a cross in the circle at the head of the ticket opposite the word "Republican" as shown in the sample ballot, and you have voted the entire republican ticket. Make no other marks. You have proved your republicanism. You have performed your duty.

See to it that every republican in your precinct gets to the polls on election day. Let there be no break in the ranks. An earnest and united effort and victory is ours.

REPUBLICAN SAMPLE BALLOT.

To vote a Straight Ticket make a cross within your party circle.

REPUBLICAN, (+)
DEMOCRAT, (O)
PEOPLES' INDEPENDENT, (O)
PROHIBITION, (O)
SOCIALIST, (O)

For Judge of the Supreme Court.
VOTE FOR ONE
SAMUEL H. SEDGWICK, Republican
CONRAD HOLLENBECK, Democrat
WALLACE BURTON CLARK, Peoples Independent
J. B. RANDOLPH, Socialist

For Regents of the University.
VOTE FOR TWO.
CARL J. ERNST, Republican
ELISHA C. CALKINS, Republican
FREDERICK G. HAWKSBY, Democrat
J. H. BAYSTON, Peoples Independent
SUSANNAH M. WALKER, Prohibition
JAMES M. DILWORTH, Prohibition
BURLA M. WILKIE, Socialist
WILLIAM SCHRAM, Socialist

COUNTY TICKET. For County Treasurer.

VOTE FOR ONE.
CHAS. F. CATHER, Republican
GEORGE R. MCCRARY, Peoples Independent

For County Clerk.
VOTE FOR ONE.
E. S. GARBER, Republican
GEORGE H. PAYNE, Peoples Independent
SAMUEL TEMPLE, Democrat

For County Sheriff.
VOTE FOR ONE.
OLIVER D. HEDGE, Republican
J. A. MCARTHUR, Peoples Independent

For County Judge.
VOTE FOR ONE.
GEO. R. CHANEY, Republican
I. W. EDSON, Peoples Independent

For County Superintendent.
VOTE FOR ONE.
EVA J. CASE, Republican
ELIZABETH MARKER, Peoples Independent

For County Surveyor.
VOTE FOR ONE.
W. E. THORNE, Republican
FRANK A. KUEHN, Democrat
Peoples Independent

For County Coroner.
VOTE FOR ONE.
DR. T. R. HALL, Republican
DR. H. M. SWIGART, Peoples Independent
Democrat

WHY! A Question for the Republicans to Answer on Tuesday.

Why should any republican desert his party ticket, or any part of it at the coming election? What possible claim has any fusionist on a republican voter? Isn't the claim of the republican candidate for each office immeasurably stronger on the republican voter than is the claim of any democratic or populist candidate. Every candidate on the fusion ticket is strictly opposed to every principle that republicans hold dear. If one of them is elected, he will whenever opportunity presents, throw his whole influence in the direction of fusion supremacy in the state, the very thing that republicans have been fighting with all the vigor that is in them for years. On the other hand, the republican candidates are in full sympathy with all that the republican party stands for and their loyal assistance can be counted on at all times. Recalling these facts ought to make it very clear to any wavering republican how his vote should be cast. To support any part of the fusion ticket is like kissing the hand that smites you. How can a party organization be maintained if there is not cohesion, unity of action, within the party? These are questions which ought to appeal to the good sense of every republican. No fusionist can be elected in this county this fall without republican votes. The republicans are in the majority and whenever an off-brand politician gets

a county office it simply means that the party lines have been trampled down and that a certain portion of the voters have been temporarily seduced from their allegiance. It is perhaps unnecessary to say that such action is ruinous to party organization. It means work, it means effort, it means the constant expenditure of time and money to keep the party in good working order. The only contribution that many make to the common cause is their vote and to withhold that at a critical time, is, to the thinking mind, an unwarranted act which cannot be too severely condemned. The republican ticket now before the people of this county is a splendid one from start to finish. Every candidate is worthy the full confidence of the party and ought to receive the entire vote. Brace up, republicans. Don't be hoodooed by the soft soap and the handshaking nonsense of the opposition, but be loyal to your ticket. Don't be a "splitter" or don't be a "stay-at-home." Remember a straight republican vote this year is an indorsement and faith in the present republican administration, state and national. Shall the party of fusion be henceforth blotted from the pages of Webster county is a question that rests alone with the voters of Webster county? We say voters, not alone republicans, but also democrats and populists who can see the trend of the present political situation.

Nothing so easily touches the heart of a father or mother as the advancement and progress made by their own offspring. This can be said and said truthfully. What is advancement and progress? We answer, in one word, "Education." Such being the answer, is there anything that should be looked after with more care and precision than our public schools? For the past few years this county has been blessed with a county superintendent of schools who has attended to the educational interests with her whole heart and soul and has done everything in her power and means to bring the public schools of this county to the highest possible standard. How well she has succeeded we all know. We have no desire to change. "When you find one that's good and true, change not the old one for the new." As a rule the people interested in the public schools, and those having children attending them are perfectly satisfied with the manner in which they are conducted

at present and are pleased with the advancement and progress made. Still how few stop to think that a change of superintendents means a change of views and methods in the conducting of this office which should interest the whole people above all others. THE CHIEF has always contended, and does still, that the education of our young should be placed above a higher standard than politics, and that the words republican, democrat, peoples independent, prohibition, socialist, etc., should be a secondary consideration, when the advancement and progress of young America is considered. Again we say, "When you find one that's good and true, change not the old one for the new." A vote for Eva J. Case is a vote for further progress and advancement without a change of methods or ideas. A vote for her is also a vote for the perfect education of the children of Webster county.

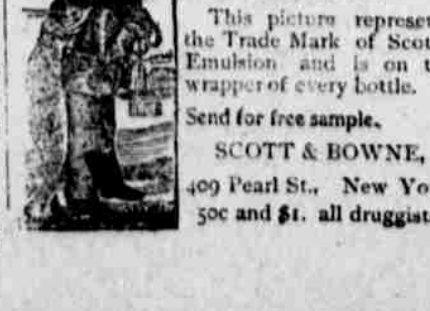
A man who is making a winning run for the suffrage of the people this fall is E. S. Garber, whom the republicans have named for the very important office of county clerk. He has lived in this county ever since he was a "kid" and no one has ever heard anything but good of him. He is in every way competent to fill the office in the most approved manner. Well educated, honest, industrious and obliging, what better officer could the people of Webster county want?

Barnum's Monkeys

"All well—all happy—lots of fun". That is the regular report from the monkey cage of Barnum's Circus ever since the keepers began dosing the monkeys with Scott's Emulsion. Consumption was carried off two thirds of them every year and the circus had to buy new ones.

One day a keeper accidentally broke a bottle of Scott's Emulsion near the monkey cage and the monkeys eagerly lapped it up from the floor. This suggested the idea that it might do them good. Since then the monkeys have received regular doses and the keepers report very few deaths from consumption. Of course it's cheaper to buy Scott's Emulsion than new monkeys—and that suits the circus men.

Consumption in monkeys and in man is the same disease. If you have it or are threatened with it can you take the hint?



This picture represents the Trade Mark of Scott's Emulsion and is on the wrapper of every bottle. Send for free sample. SCOTT & BOWNE, 409 Pearl St., New York. 50c and \$1. all druggists.

Eden's Your Bowels With Castorol. Candy Castorol, cure constipation forever. 50c. If C.C.C. fail, druggists refund money.