

THURSDAY, NOVEMBER 21, 1872.

Arrival and Departure of Mails. Northern-Daily by Railroad-Arrives 11 a. m. Departs 12:30 p. m.

Religious. Baptist Church. Services every Sabbath morning at 10 o'clock. Sabbath School at 11 a. m. Rev. T. J. MORSE, Pastor.

Methodist E. Church. Services each Sabbath at 10:30 a. m. and 7:30 p. m. Sunday School at 11 a. m. Prayers Meeting Thursday evening, 7:30 p. m. W. A. POLLOCK, P. M.

City Officers. Mayor, A. F. CAGWELL. Aldermen-First Ward-James Stevenson and Chas. Neill; Second Ward-E. H. Johnson and Lewis Marshall; Third Ward-J. B. Deane and W. M. J. C. HARRIS.

County Officers. County Commissioners-C. HARNES, H. O. MUNK, A. J. RITNER. Sheriff, James M. HANCOCK. District Clerk, W. H. HOOPER.

Special Notices. Marriage Guide. EVERY ONE WHO IS ABOUT TO BEING a private instructor for married persons, or those about to be married, both male and female, in everything concerning the physiology and relations of our sexual system, and the production and prevention of offspring, including all the new discoveries never before given in the English language, by W. M. YOUNG, M. D.

Manhood: How Lost, How Restored. Just published, a new edition of Dr. ROBERT J. CULLEN'S celebrated treatise on the radical cure (without medicine) of Spermatorrhea, or Seminal Weakness, Incapacity, Nervousness, Sexual Debility, and Impotency to Marry, generally. Nervousness, Consumption, Epilepsy, and Pile: Mental and Physical Incapacity, resulting from Self-Abuse, or Sexual Excesses, etc.

Billiard Saloon & Bar. W. H. SMALL. Has just fitted his new room, No. 19 MAIN STREET, where he will keep the finest and best LIQUORS!

B. S. WALL. Would respectfully inform the gentlemen of Brownville, citizens of Nebraska county, and the public generally, that he keeps the finest assortment of WINES, LIQUORS AND CIGARS to be found in this or any other city, which he will warrant to suit the taste of any connoisseur, and will accept none but the best of testers.

Oppenheimer & Meyer, Manufacturers of CIGARS. And Wholesale Dealers in Tobacco, Pipes, &c.

Laws of the United States. BASED AT THE SECOND SESSION OF THE FORTY-SECOND CONGRESS.

[GENERAL NATURE-NO. 145.] AN ACT to establish certain post-roads. Be it enacted by the Senate and House of Representatives of the United States of America in Congress assembled, That the following be, and are hereby established as post-roads:

ALABAMA. From Mitchell to Owlewiebe. From Jacksonville, via White Plains and Edwardsville, to Kemp's Store. From Edwardsville, via Bell's Mills, Arbaconie, Slate Hill, and Mill Wood, to Wedowee.

ARIZONA. From Independence to Deep Springs. From Havahol to Mineral Park, in Arizona. From San Buenaventura to Hueneque.

CALIFORNIA. From Hydeville, via Gibson's Store, Robinson's Store, Coute's Store, and Kiekamakie, to Round Valley. From Reno, in Nevada, to Greenville.

FLORIDA. From Orlando to Cross Prairie. From Concord to Hartell, via Calvary, in Georgia. From New Smyrna, via Spring Hill and Lake Brevard, to Hawksville.

GEORGIA. From Cedar Keys to Sumpterville. From Orlando, via Lake Mariou and Fort Drum, to Saint Lucie. From Key West, via Charlotte Harbor, to Tampa.

INDIANA. From Penfield to Woodville. From Madison, via Old Groveville, and Ancilla Station, to Monticello, Florida.

IOWA. From Manson to Algona. From West Side, via Lever, Boyer Valley and Eden, to Storm Lake. From Jacksonville, via Pond Valley, to Cresco.

KANSAS. From Neodesha, via Sternerton, Jerret, and Longton, to Elk Falls. From Osborne City, via valley of the Solomon, to west-line of the State.

MISSOURI. From Concordia, via Aurora, to Beloit. From Concordia, via Aurora, to Cawker City, in Mitchell county.

MISSOURI. From Whitesburg to Prestonburg. From Jamestown to Cumberland City. From Greensburg, via Vaughn's Store, to Edmonton.

MISSOURI. From Cumberland to Bottle Run Tavern. From Wolfville to Smithburg. From Oak Bluffs Landing to Edgerton. From Greenfield to Conwa.

MICHIGAN. From East Bradford to South La Grange. From Ionia to Easton.

MINNESOTA. From Benson to Indian Agency, at Big Stone Lake. From Cosmos, via Birch Coulee, to Beaver Falls.

MISSISSIPPI. From Brookville to Pickensville. From Greenville to Rolling Fork. From Greenville, via Burnt Mills, Burnt Mill, and Hickory Plains, to Marietta.

MISSOURI. From Crocker to Lima Creek. From California, via Jamestown, Prairie House, Gooches Mills, and Overton, to Koochesville.

NEW YORK. From Carletonville to New Hope. From New Bremen, via Weaver Falls, to Croghan.

NEW HAMPSHIRE. From Harrisville, via Potterville, to Keene. From North Star to Happy Home.

NEVADA. From Austin to Lida. From Montana, via Alida, to Gold Mountain.

NEBRASKA. From Kearney Station, via Fort Kearney, Republican City, to Truesdale and Hays City, in Kansas.

NEW JERSEY. From Methuen, via Allendale and Rock Mills, to Blawenburgh. From Dover to Mine Hill.

PENNSYLVANIA. From Harrisonville, via Sype's Mills and Needmore, to Warfordsburg. From Bloomsburg, via Mordansville, Rohsburg, and Stillwater, to Benton.

PENNSYLVANIA. From Trezevant, via McLemarsville, to Terry. From Ashville, via West Fork of Ivy and Upper Laurel and Indian Creek, to Jonesboro.

TENNESSEE. From Richland Station to Lafayette. From Brentwood, via Millview, to Hardison. From Dover to Tobacco Point.

TENNESSEE. From Memphis, via Tonge Gap, Clems Branch, and Flat Ridge, to Rye Valley. From Laurel Grove to Cartersburg.

TENNESSEE. From Marshallfield to Cabot. From Norrisville to South Danville.

The AULTMAN & TAYLOR THRESHER.



Threshing Machine WITH 8 AND 10 HORSE. Mounted and Down Powers. MADE BY THE WELL KNOWN AULTMAN & TAYLOR MFG CO., Mansfield, Ohio.

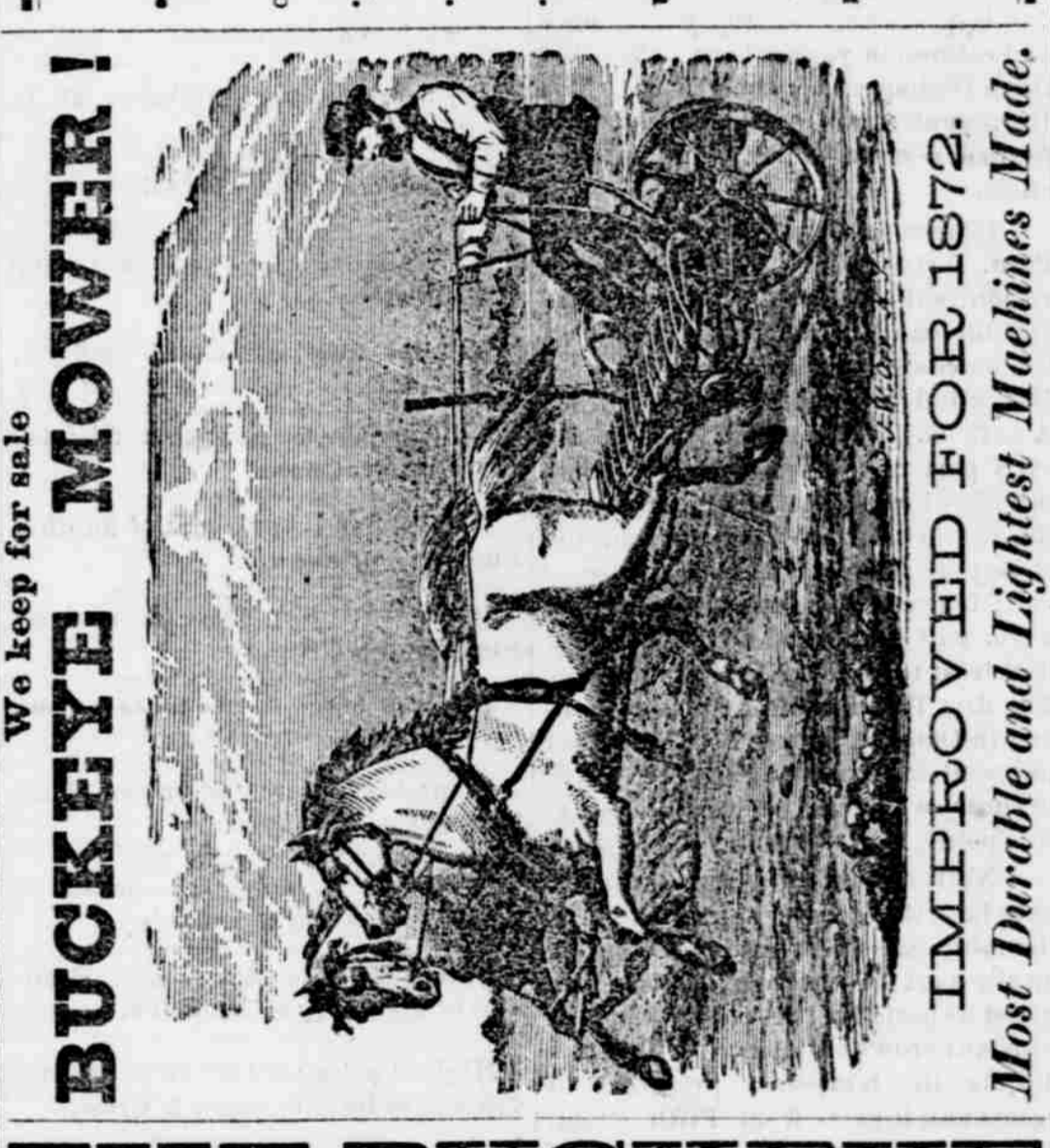
The brilliant success of these Improved Grain-Swing, Time-Saving and Money-Earning Threshing Establishments is unparalleled in the annals of Farm Machinery. Largely increased earnings are reported by Threshers who have purchased.

Call on the undersigned, (or send your name and post office address), and get a Factory Price List and Descriptive Pamphlet Free, containing full particulars and letters from hundreds of purchasers. "Complete Threshing Establishments," as well as Horse-Powers "alone," and Separators "alone."

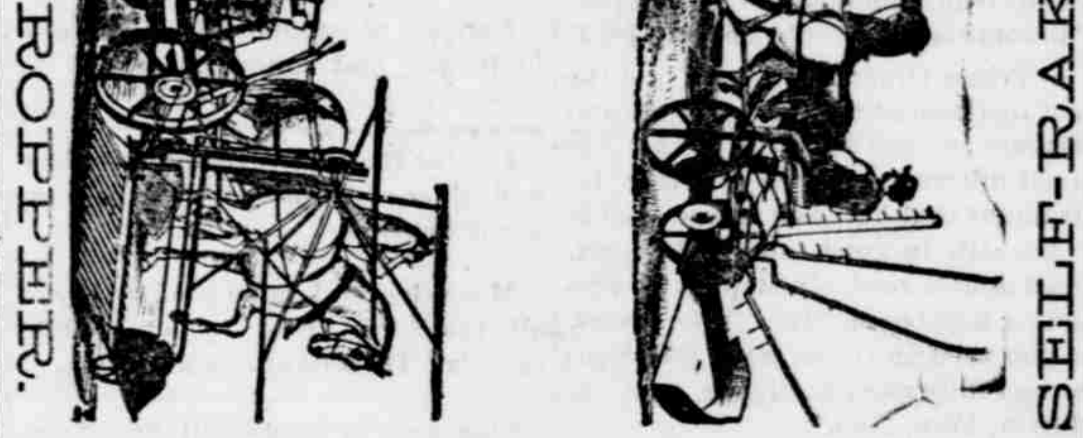
F. A. TISDEL, JR., & CO.

Can and will sell you all kinds of Implements cheaper than any other house in Nebraska.

Having Why Every Farmer Should Purchase a Harvesting Machine. 1. Economy of Labor. 2. Working in the Shade. 3. The Sowing of Grain. 4. Lightness of Draft. 5. Saves every sort of Grain. 6. Its Great Durability.



THE BUCKEYE



We sell the STUDEBAKER and WHITE WAGON, and BUGGIES OF ALL KINDS.

If you want anything, come and ask for it. WE KEEP NOTHING BUT FIRST CLASS GOODS AND GUARANTEE ALL OUR GOODS TO BE AS RECOMMENDED.

R. R. TIME TABLES. MIDLAND PACIFIC RAILWAY. SCHEDULE NO. 9.

Table with columns for Westward and Eastward stations and train numbers.

The time given above is that of Lincoln, being 27 minutes slower than that of Chicago.

Burlington & Missouri River R. R. IN NEBRASKA. PASSENGER AND MIXED TRAINS, RUNNING BETWEEN Plattsmouth and Lincoln.

Table with columns for Westward and Eastward stations and train numbers.

The time given above is that of Omaha, being 33 minutes slower than that of Chicago.

Kansas City, St. Joseph & C. Bluffs. TIME TABLE NO. 16. To take effect Sunday, July 16, 1872.

Table with columns for Going North and Going South stations and train numbers.

The time given above is that of Omaha, being 33 minutes slower than that of Chicago.

St. Louis TO NEW YORK, CHICAGO, CINCINNATI AND LOUISVILLE, WITHOUT CHANGE.

Steel Rail! Double Track! Baltimore and Ohio R. R.

The Great Short Line from CINCINNATI or COLUMBUS EAST! Saving 27 to 110 miles, and arriving one Train in Advance.

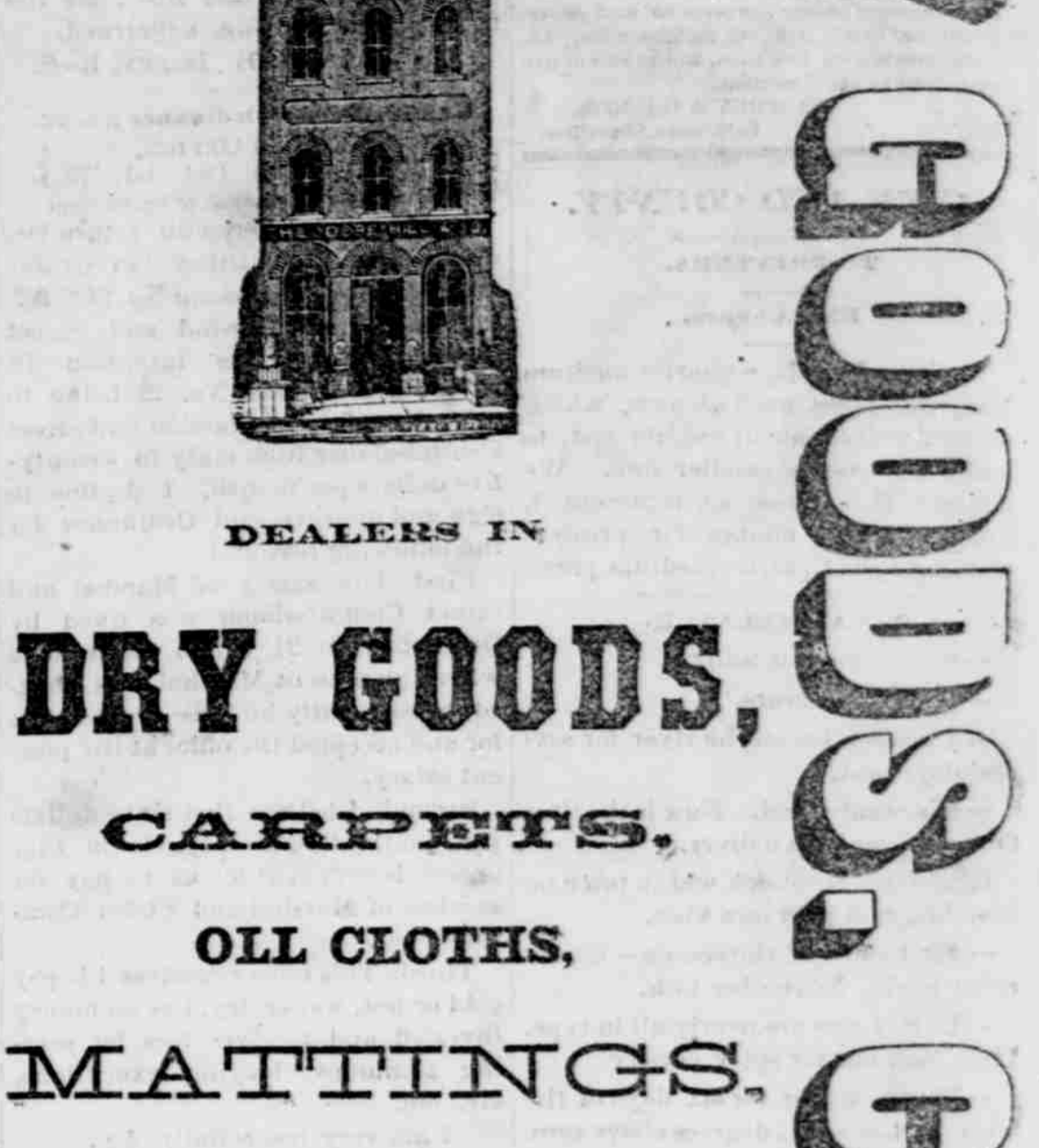
Kansas Pacific Railway. Short, Favorite and Only ALL RAIL ROUTE!

Denver, Cheyenne, Salt Lake City, Omaha, St. Louis, Kansas City, Chicago, New York, Philadelphia, Baltimore, Washington, New York, Philadelphia, Baltimore, Washington, New York, Philadelphia, Baltimore, Washington.

Other All Rail Route to any of the above points.

Passengers by this route have an opportunity of viewing the Agricultural Industries of Kansas, mining, agricultural and grazing districts of Colorado.

THE HILL & CO., DRY GOODS, CARPETS, MATTINGS, BROWNVILLE OR PAWNEE CITY.



Having determined to reduce our stock of Dry Goods, Notions, &c., and having on hand a very large and extensive stock, we will commence on Monday, the 15th of November, and will sell our entire stock at such prices as will insure a speedy sale.

Our only object is to get money, therefore we will sell for cash only. To secure great bargains, call early, with the cash, and be astonished at the low prices.

THE LOWEST PRICES. GEO. DAUGHERTY, PROPRIETOR UNION HOTEL, 88 & 90 MAIN STREET, BROWNVILLE.

New York One Price Clothing and Furnishing Goods House. J. S. HETZEL. No. 70 Main Street, - - Brownville, Nebraska.

THE BOTTOM PRICE ON ALL ARTICLES SOLD. SWAN & BROTHER, Wholesale and Retail Dealers in Groceries, Provisions & Queensware, BROWNVILLE, NEB.

Great Through Passenger Route THE OLD RELIABLE HANNIBAL & ST. JOE, VIA ST. JOSEPH AND QUINCY. TWO FAST EXPRESS TRAINS.

THE COUNTRY GENTLEMAN. Volume for 1873. THE CULTIVATOR & COUNTRY GENTLEMAN, for the past forty years, has ranked, both in this country and abroad, the Standard Journal of American Agriculture.

South and East. For sale at Ticket Offices St. Joseph & Council Bluffs, Mo., and at the principal stations on the line.

FRANZ HELMER, WAGON & BLACKSMITH SHOP. One Door West of Court House. WAGON MAKING, Repairing, Plows, and all work done in the best manner and on short notice.

PERPETUAL BLOOMING ROSES. Over two hundred different finest varieties of perpetual blooming and climbing roses, of our own raising, have for out-door cultivation and use for winter bloom in the parlor. Can be sent by mail.

Buy Your Through Tickets Via St. Joe and Quincy. For sale at Ticket Offices St. Joseph & Council Bluffs, Mo., and at the principal stations on the line.

WAGON & BLACKSMITH SHOP. One Door West of Court House. WAGON MAKING, Repairing, Plows, and all work done in the best manner and on short notice.