

ure, and any cow that is to give milk must not have less of this grain mixture than three pounds. If she gives fifteen pounds of milk a day give her five pounds of this grain mixture, and if she gives twenty-five pounds of milk, give her eight pounds of grain feed.

PAYS TO ROLL WHEAT

In view of the fact that the Nebraska experiment station has found that rolling wheat increases the yield over five bushels an acre when roots are exposed through surface cracking, farmers are considering this a profitable practice this spring. The experiment station has found that harrowing after rolling was not as good as rolling alone and that rolling alone may profitably be done after the frost is out.

The county agricultural agents have found but very little difference in yield where spring rains have been regular and timely enough to pack the soil and prevent checking. Where the ground is dry and the surface left checked and no timely rains have come to pack the soil, however, the usual increase in yield has followed from rolling. The agronomists caution against rolling ground when it is wet. If the soil is dry, rolling aids in forming a surface mulch and does not compact the surface.

FEEDING BEEF STEERS

According to Professor H. R. Smith, liberal feeding of a steer from the time he is twelve months old until he is twenty-four months old will result in a gain of practically two pounds per day, says the Iowa Homestead. If he is carried for another year this gain will be reduced to a pound and three quarters per day, and the following year it will take liberal feeding to make a pound and a half daily. This means that the largest gains are made early in life, and it follows that these gains will be made cheaper because the cost of maintenance is lower. In emphasizing the matter of cheapness of cost of feeding young animals, Professor Smith refers to six different trials where accurate records were kept, showing that during the first twelve months of a beef animal's life a hundred pounds of increase in weight cost \$3.45, the second twelve months the same animal cost \$7.42 per hundred pounds, while the third twelve months it ran up to \$11.50 per hundred pounds.

In the light of these figures it can be well understood why the early maturing animals is increasing in popularity, particularly with those feeders who raise their own cattle. It must be remembered that all steers are not of a type to finish up at an early age, because increase in weight is in the form of growth rather than the form of flesh. It is all a question of type, some types being ready for the block almost any time after they have acquired their calf fat, while others reach prime conditions only at maturity or thereabouts. When corn belt cattlemen settle down to a policy of raising the cattle that are fed out in the feed lot then and then only will the real merit of the early maturing type be appreciated.

ALFALFA HAY AND CORN FOR PIGS

With corn at 70 cents a bushel, alfalfa hay at \$10 a ton, and tankage at \$2.50 a hundred weight, a ration of alfalfa hay and corn proved most profitable in a recent test with fattening pigs carried on at the Nebraska Experiment station. The pigs fed alfalfa hay and corn did not gain as rapidly as did pigs fed tankage and corn. However, in cost of gains, the

SPECIAL OFFERS for 1915

For the season of 1915, we have decided to again give Commoner readers an opportunity to secure our two most popular and satisfactory offers — the superb collection of Eight Hardy Everblooming Roses and the choice collection of Six Grape Vines.

These two collections can be secured only in connection with the combination offers quoted below, and orders must be placed at once in order to avoid disappointment. This is made necessary because the supply of the growers is sold out by contract in advance of the season, and the number of collections we can secure for our readers will be limited. To be sure, get your order on our books as EARLY as possible.

Under the terms of this offer the plants will be shipped direct from the grower to you at the proper time for planting in your locality, unless otherwise requested. This plan has proven highly satisfactory to thousands of our readers. Send your order NOW—the plants will reach you just at the time when they can be planted to the best advantage, with full planting directions. Read full description below.

Eight Fine Hardy Everblooming Roses

Take advantage of this splendid opportunity to start your rose garden and secure eight of the finest varieties of Hardy Everblooming Roses. We know these will give you satisfaction as every single one named possesses the good qualities of vigorous growth, freedom of bloom, fragrance and beauty of flowers. They will thrive in any ordinary garden soil and if a little care is used in planting the sorts we offer will bloom lavishly every month of the growing season, and produce great, strong, lusty bushes, which increase in beauty with the passing years.

We want you to be successful in your attempts at rose growing and to assist in your efforts we enclose special printed instructions on their planting and care. We guarantee them to reach our subscribers in good growing condition, and have arranged to have plants shipped at the proper time to set out in your garden. An entire new collection.

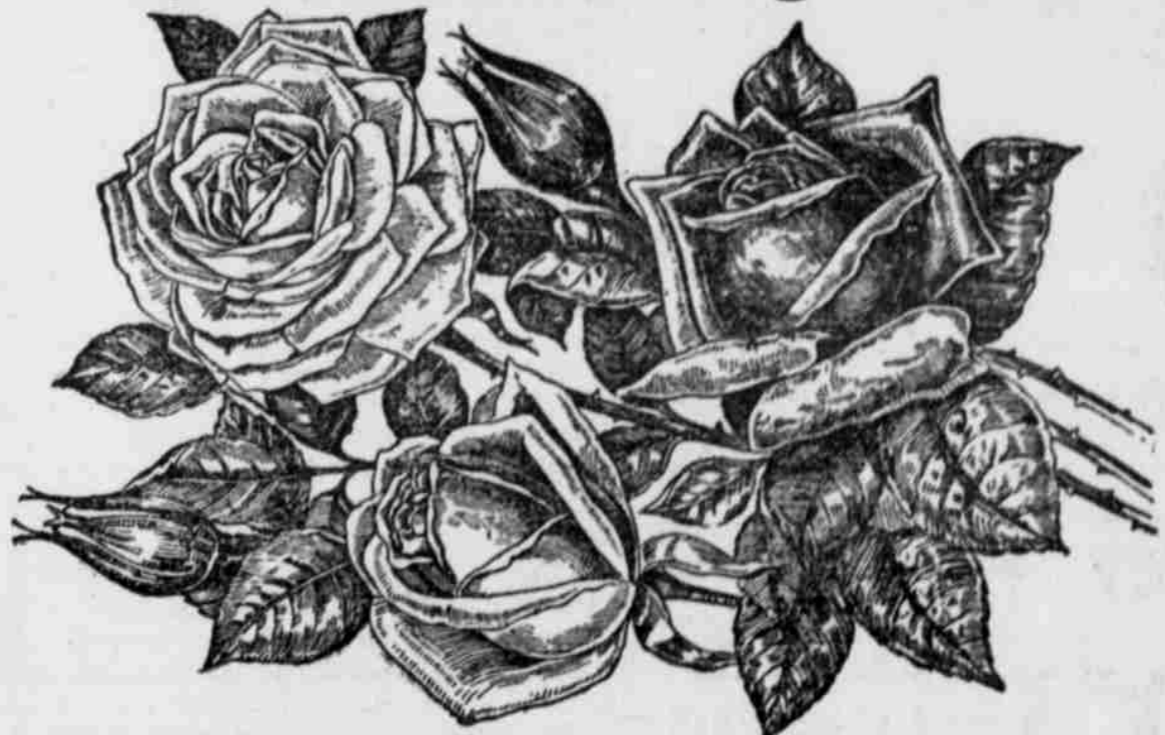
Description of the Roses

MILADY—A valuable new hardy everblooming red rose. A strong, sturdy grower with heavy, leathery deep green foliage. Flowers are bright rich crimson with delicious fragrance and are produced in great quantities.

WM. SHEAN—A queen among roses, showing marvelous beauty and a healthy constitution. Absolutely hardy everywhere and producing an abundance of beautiful roses. Color a lovely sparkling pink.

NITA WELDON—A gold medal winner, bearing masses of bloom all summer. Flowers are of globular form, very large and full; color, pure ivory white with edges of petals tinted faintest blush.

RENA ROBBINS—The new yellow rose. It grows to perfection in any soil in all sections of the country



and blooms continuously the entire season, bearing immense flowers of deep golden yellow.

ROBIN HOOD—For intense and dazzling color there is no other rose to compare with this splendid kind. The flowers are beautifully built, full double and perfectly molded; the color a glorious rosy-scarlet that is at once soft, bright, lasting.

IRISH FIRE FLAME—The variations of intense color in this rose appears as a glowing flame, which suggested to the producer its unique name. Flowers are magnificent in bud form; color, an intense fiery crimson at top of petals shading to a rich orange salmon at the base, later changing to orange crimson.

MABEL DREW—Here is a magnificent new rose. Vigorous growing and free blooming. The flowers are

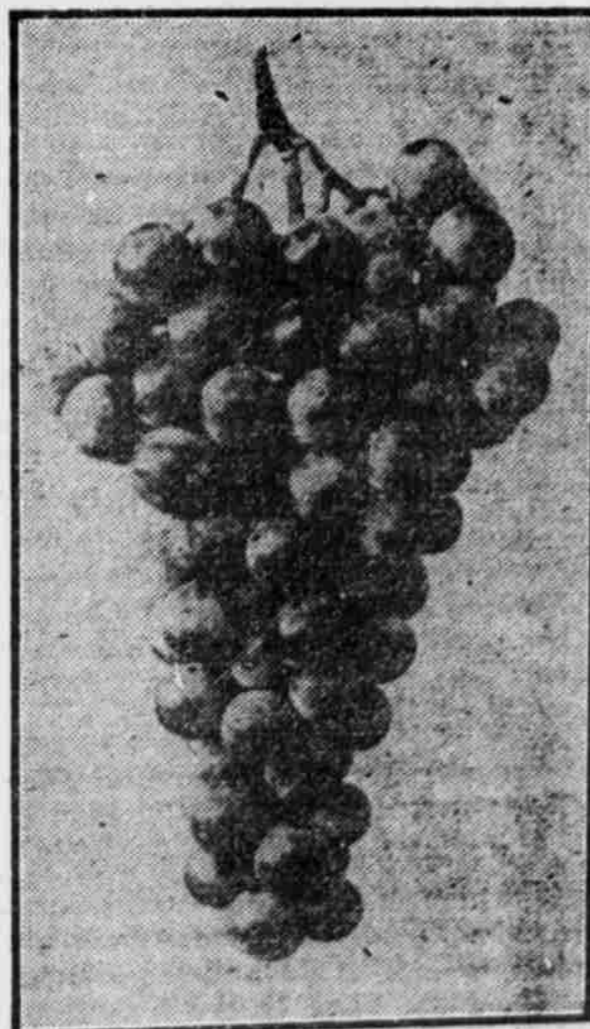
large and perfectly double; on first opening they are a rich creamy yellow changing to an intense canary yellow as they develop.

RED DOROTHY PERKINS—A perpetual source of wonder. Perfectly hardy. The bloom is produced in great clusters; the color being deep intense scarlet crimson.

Sent Without Cost to You

OUR OFFER—We will send this entire collection of 8 Hardy, Everblooming Roses, carefully packed and prepaid, and without extra cost, to all who send us only \$1.15 to pay for one year's new, renewal, or paid-in-advance subscription to both The Commoner and The American Homestead. Fill out order blank below, and make remittance of \$1.15 payable to The Commoner, Lincoln, Neb.

Six Strong Well-Rooted Grape Vines



A splendid collection of Six Extra Choice, strong, well-rooted, 2-year old Grapevines, that will generally bear one year after transplanting. This collection comprises 2 Concord, black grapes, the well-known market sort which thrives in all sections; 2 Niagara, the most valuable of all the white grapes; 2 Worden, a variety of black grapes equaling the Concord in vigor, health and productiveness. Six plants in all.

The grape is the most healthful of all fruits. It can be grown by anyone who has a garden, a yard or a wall. Enormous profits have been realized from this fruit. Good grapes are grown on various soils; clayey, black, sandy, etc. Our offer will give you a fine start towards raising this superb fruit. We guarantee these grape vines to reach our subscribers in good growing condition, at the proper time to set out in your garden, with special printed instructions on their planting and care.

Concerning these grape vines a Commoner subscriber writes: "Gatesville, Texas, R. R. 2, Box 56, August 11, 1914. The grape vines ordered through the subscription department of The Commoner are most excellent and fine, and I am well pleased with same. Local agents of nurseries here charge three times as much for inferior stock. G. Cummings."

OUR OFFER—We will send the entire collection of Six Grapevines, carefully packed and prepaid, and without extra cost, to all who send us only \$1.15 (a special club rate), to pay for one year's new, renewal, or paid-in-advance subscription to both The Commoner and The American Homestead. Fill out order blank below, and make remittance of \$1.15 payable to The Commoner, Lincoln, Neb.

FILL OUT AND MAIL THIS ORDER BLANK

The Commoner, Lincoln, Neb.—I enclose \$1.15 (a special club rate) to pay for one year's subscription to both The Commoner and The American Homestead, which entitles me without extra cost and all charges prepaid, to my choice of any ONE of the two offers given above.

(State Offer Wanted).....

Name

P. O.....